

King Edward's Hospital Fund
for London
Annual Report



BRITISH MUSEUM

LIBRARY

NO. 100

18

501

**KING EDWARD'S HOSPITAL FUND
FOR LONDON**

Patron: Her Majesty The Queen

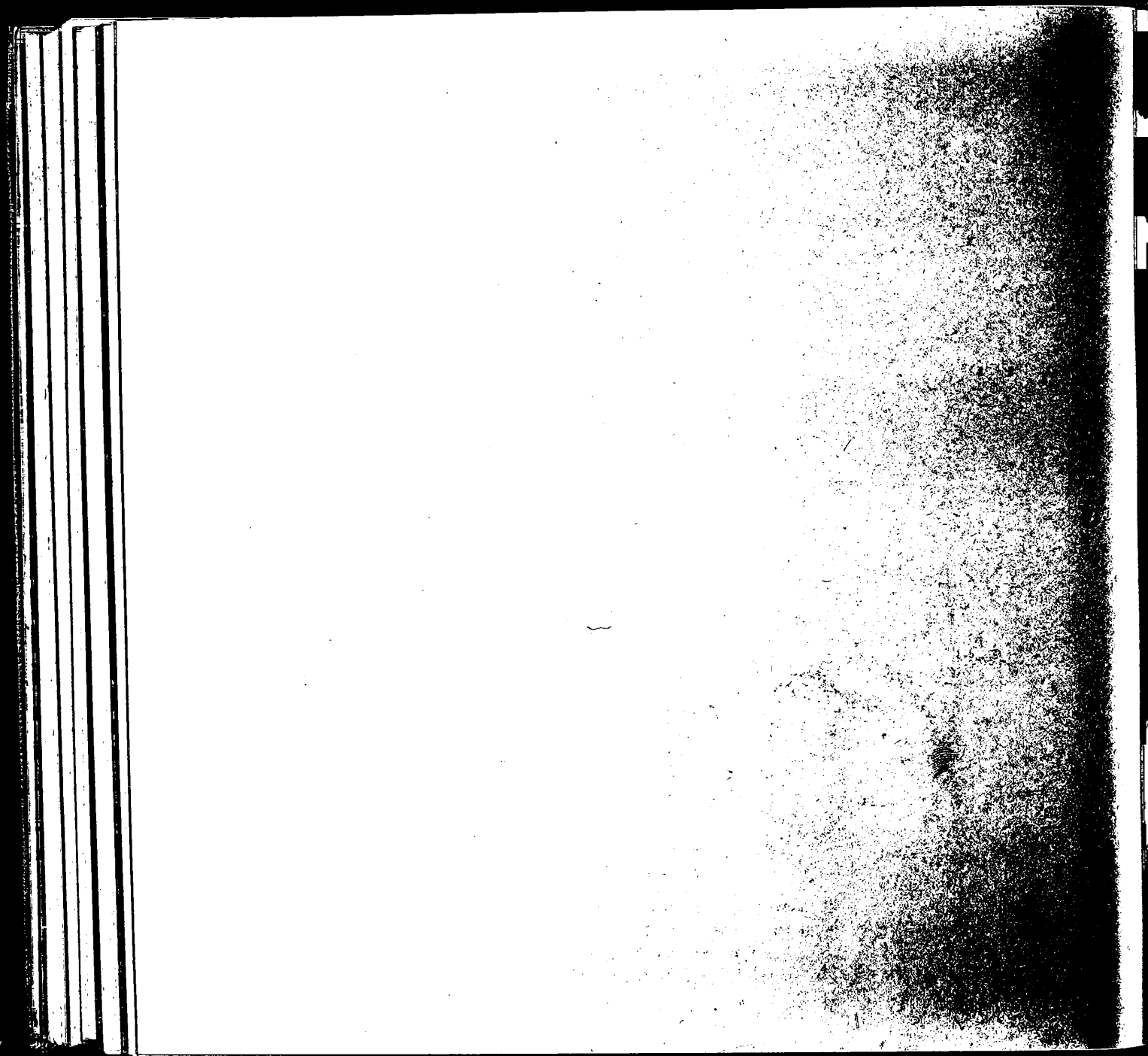
Governors: HRH Princess Alexandra,
The Hon Mrs Angus Ogilvy GCVO
Sir Andrew H Carnwath KCVO DL
Lord Cottesloe GBE TD

Treasurer: R J Dent

Chairman of the Management Committee:
Lord Hayter KCVO CBE

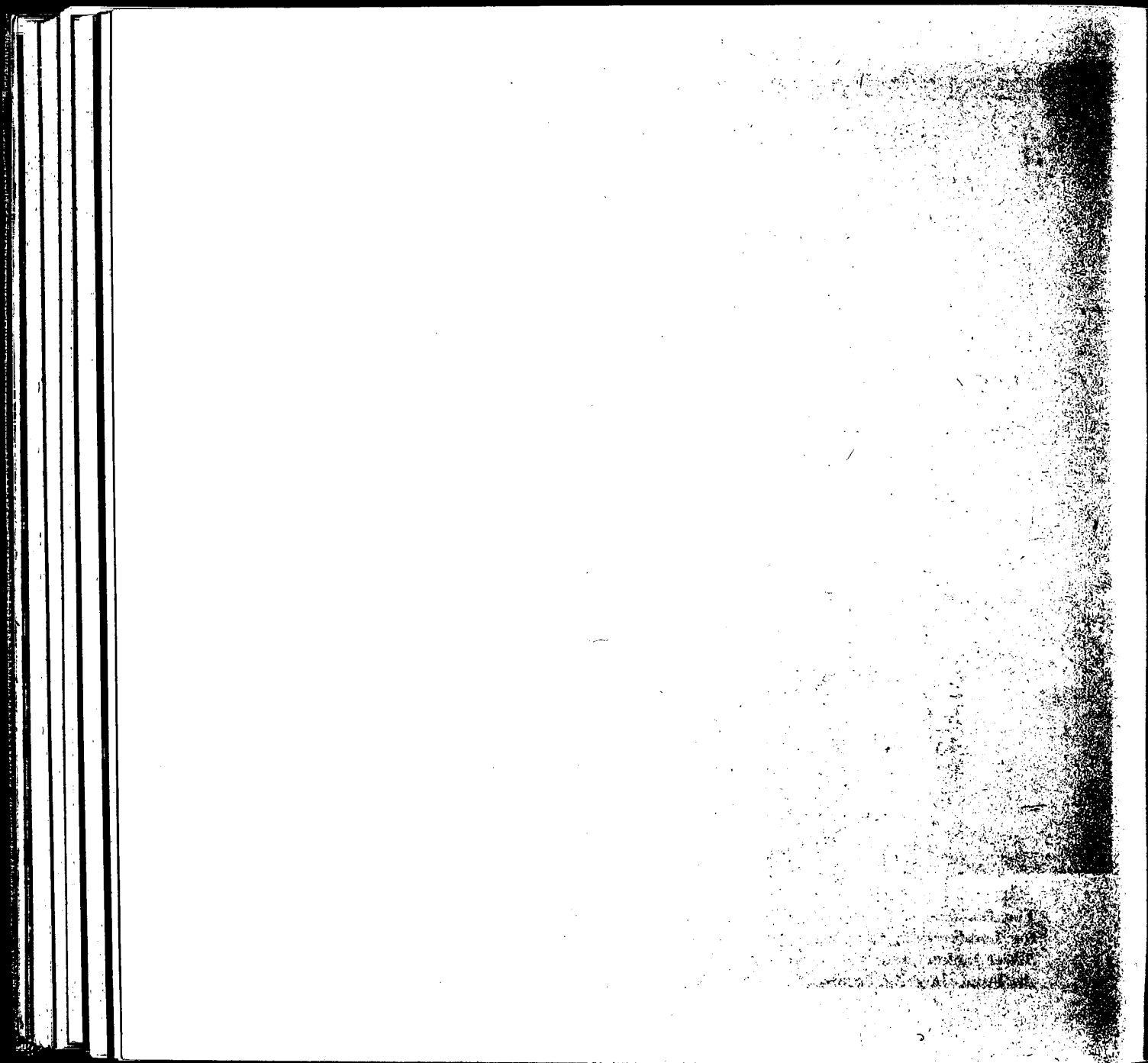
Secretary: G A Phalp CBE TD

14 Palace Court London W2 4HT
Telephone: 01-727 0581





The Governors, General Council, management and staff of King Edward's Hospital Fund for London offer their loyal good wishes to Her Majesty The Queen on the occasion of her Silver Jubilee, and their respectful thanks for the gracious support Her Majesty has given to the Fund since she became Patron in the year of her Accession.



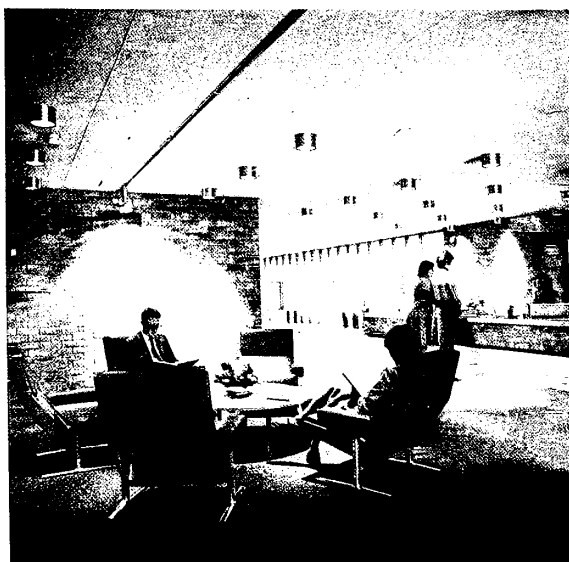
Opening the new King's Fund Centre

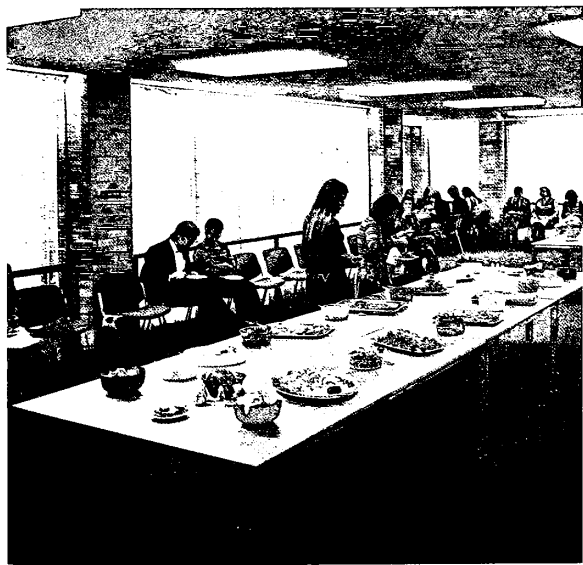


HRH Princess Alexandra, the Hon Mrs Angus Ogilvy, officially opened the new King's Fund Centre on Thursday 28 October 1976, and unveiled a plaque commemorating the event. Her Royal Highness was welcomed by Lord Hayter, with Lord Cottesloe and Sir Andrew Carnwath, Mr R J Dent, Mr G A Phalp and Mr W G Cannon. Among those presented were the Mayor and Mayoress of Camden, Alderman Arthur Soutter and Mrs Soutter; representatives of the Department of Health and Social Security; architects, Richard Sheppard, Robson and Partners; building contractors, G E Wallis and Sons Limited; consultant structural engineers, Clarke Nicholls and Marcel; mechanical and electrical engineers, Derek Clapton and Partners.

After the formal proceedings, the Princess inspected the new building, including the kitchen, and at tea time talked informally with many members of the Fund's committees and staff, showing keen interest in all that the Centre is doing. Her visit will long be remembered with delight and gratitude by everyone.

A day at the new King's Fund Centre

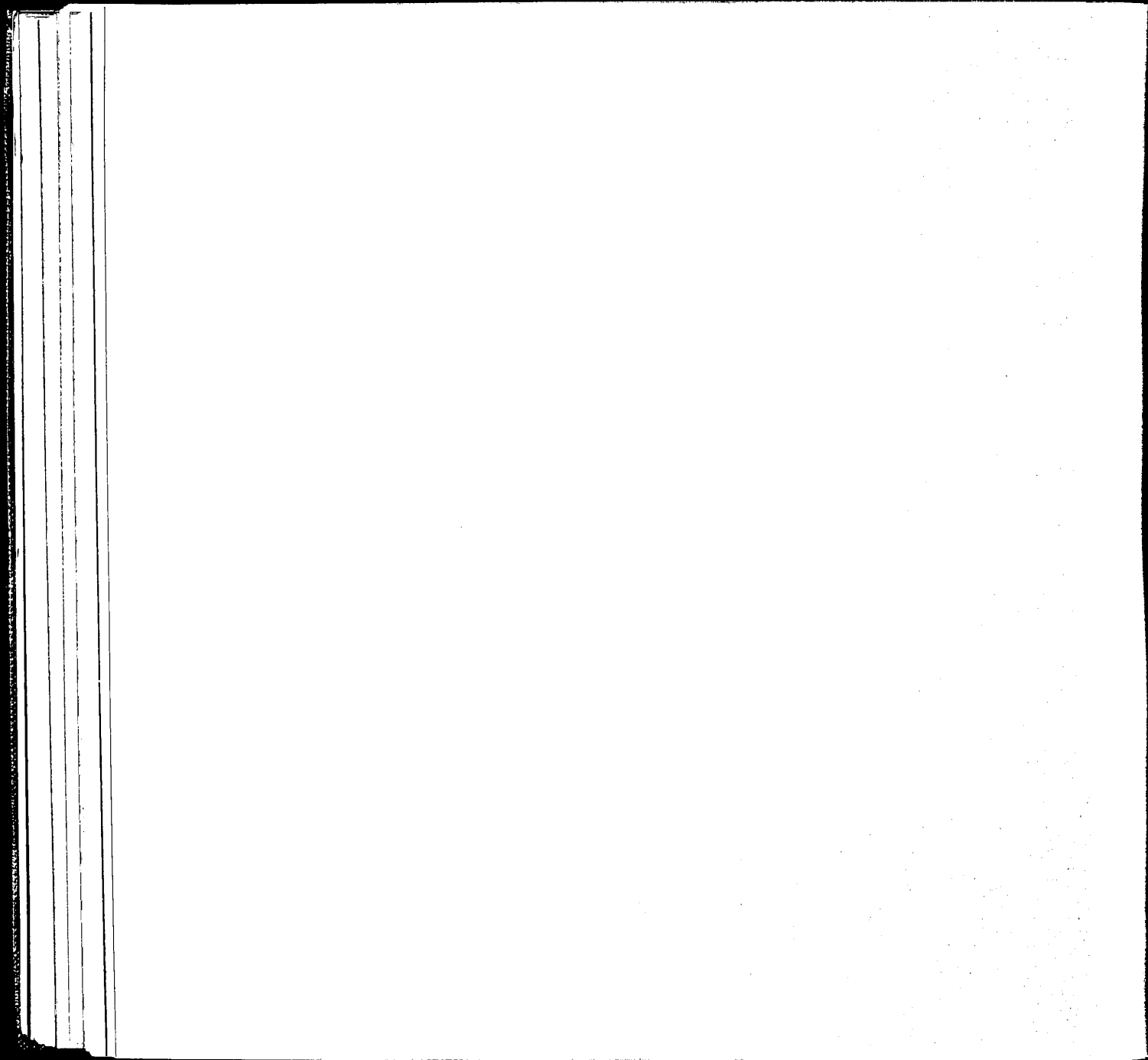




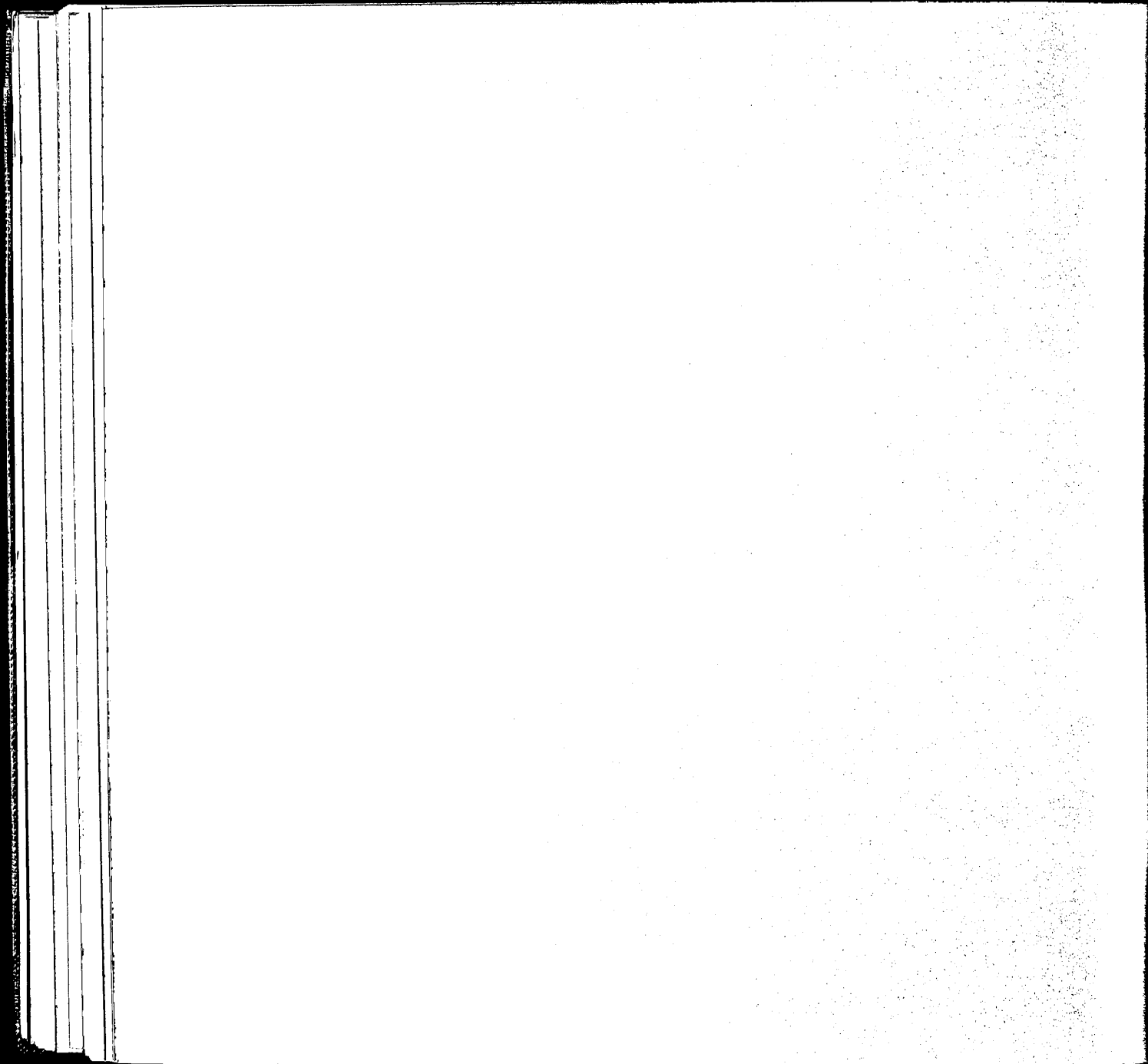


CONTENTS

	page
Report 1976	11
Finance	21
Contributors	24
Grants made in 1976	
to National Health Service and local authorities	25
to independent hospitals and homes	26
to organisations and educational centres	27
in-house grants	30
King's Fund Centre conferences, meetings and displays	31
King's Fund College academic year 1976-7	32
General Council	33
Committees	34
Staff directory	36



Report 1976



A Silver Jubilee affords an opportunity to look at the present in the light of the remembered past.

Twenty-five years ago, the National Health Service was still a new enterprise – one of the most radical, most contested and biggest to come out of post-war reconstruction. It was incomplete, unsettled, short of money, staff, facilities and buildings. Hospital management, unlike the therapeutic professions, had no compulsory training system and no uniform standards of practice. There were doubts about the ability of the service – or even its right – to survive. Today the NHS, unquestionably established in the life of the nation, is trying to develop into a truly comprehensive service run by consensus management. But this is proving to be as unsettling as the original construction; the doubts now concern the workability of the new structure. Money is even more a worry; sharing resources fairly and according to real need has become the contested issue. A disturbing feature is the disruption of work by so-called 'industrial action' and the resultant antagonism among staff who used to work amicably together.

THE KING'S FUND AND THE NHS

The effect of these various but connected issues upon the morale of the staff is of particular concern to the King's Fund. In common with other organisations, it responded to the invitation of the Royal Commission on the National Health Service to present evidence. The statement submitted is confined to matters on which the Fund, as an independent foundation with many years' experience and observation of health service practice, felt able to speak with authority. It outlines the Fund's view of the causes of low morale in the service and offers some suggestions on how this might be tackled, with examples of how some hospitals, often by simple practical measures, have been able to keep their staff in good heart and, thus, maintain an efficient service to patients. The statement also describes some of the Fund's activity which was thought to have a bearing upon the work of the Commission.*

*The evidence was not circulated to the press but copies are available on request to the King's Fund Centre, 126 Albert Street, London NW1 7NF.

The Fund's purpose has always been to improve health care practice, particularly that of the hospitals of London. The ways in which it seeks to achieve improvement change according to circumstances and need. The biggest change came about in the first years of the NHS when the Fund, relieved of its responsibility for the upkeep of hospitals in London, could begin to use more resources to develop its other activities. These included setting up advisory and information services and bringing people together for discussion, from which developed the King's Fund Centre; and founding experimental staff colleges, now merged into the King's Fund College. The two institutions began to take on a national role and to open up working contacts with other organisations, universities and educational centres at home and abroad. In addition, more resources were put into enquiries and experiments, at the request of NHS authorities or on the Fund's own initiative, with the aim of introducing any useful findings into health service practice generally. More was done to encourage voluntary effort.

GRANTS

The larger portion of the income available for grants is now allocated to these activities, and that for the traditional form of direct grants – for building, furnishing and equipment – has correspondingly decreased. The Fund retains its responsibility to help maintain hospitals and homes serving London which elected to remain outside the NHS. They include some owned by voluntary organisations, and some which have local arrangements to take in patients for the NHS or social service departments. NHS hospitals in London still receive a sizeable portion in direct grants, no longer for capital building or maintenance which is the responsibility of the NHS authorities, but for developing ideas and projects within the Fund's sphere of interest, which will improve services to patients or further staff training and which cannot be funded entirely from NHS or other resources.

Rising costs are leading to heavier demands upon the Fund and at the same time are forcing a change of policy in grant-making. It is not simply a question of being more selective, though that, as reported last year, remains important. In considering support for a new long-term project, more attention must be given to the means by which it may be continued if the experimental period, which the Fund would want to support, has a successful outcome. The well-tried practice of limiting the period of a grant over one, two or perhaps three years has, therefore, also had to be modified to allow a more flexible policy which would provide for longer periods when necessary. In addition, the amount for each year may need to be increased to keep pace with inflation. Inevitably, these changes divert funds which would otherwise be available for new projects and this is a trend which the Fund's Research and Development Committee is watching carefully.

The gross income of the Fund has risen year by year, but these increases, welcome though they are, become absorbed by what may be called the 'normal process of inflation'. The policy during this difficult time is to ensure that the portion for grants is as large as possible. This involves careful control of all other expenditure, including the sums required for the maintenance of the College and the Centre.

Full details of grants distributed to NHS authorities, independent homes and hospitals, organisations and educational centres, and for in-house projects, are given on pages 25-30.

VOLUNTARY EFFORT IN THE NHS

'... we believe that voluntary service has something vital to give the administration of the hospital service, something that administration by professionals, however efficient, can never give... Voluntary service survives not for sentimental reasons but for a very practical reason, because it is needed and will continue to be needed. It is now both a partner of the State and an agent of the State in a new national service, and this presents both a challenge and an opportunity.'

14

So concluded John Trevelyan's report of an enquiry commissioned by the National Council of Social Service and the Fund in 1952 when the future of voluntary effort in the NHS was, like the NHS itself, being questioned. And so it turned out. There is hardly an aspect of health care in which the volunteer is not a partner of the professional and the voluntary organisation an agent of the statutory authorities. Nearly every hospital has its league of friends and many have a volunteer service working alongside professional staff. The Fund gave full support to these efforts, in particular by providing office services to develop organised voluntary help in hospitals.

New ways of stimulating voluntary effort to meet new circumstances have been explored. The Fund has sought to mobilise the natural wish of people, particularly young people, to give practical help to those less fortunate, and is closely associated with the development of the Volunteer Centre. A substantial grant towards new premises was given in 1976. The Fund has also been helping to establish the new small groups which specialise in the problems of patients with specific disability. And at the request of the Department of Health and Social Security, the Fund helped to prepare the ground for a national association of community health councils and has provided facilities for an information service on CHC activities throughout the country.

The continuance of voluntary effort is of increasing importance in the reorganised NHS, if only because many of those who knew the work of hospitals so well through voluntary membership of the former hospital management committees are no longer in post. The new structure does not provide the same opportunity for close association of members of a regional or area health authority with the operational parts of the service.

KING'S FUND COLLEGE

The College in 1976 celebrated a twenty-fifth anniversary of its own - the opening of the Hospital Administrative

Staff College, at a time when it was quite a new idea that people in charge needed any sort of preparation. Management training was perhaps the most far-reaching and influential of the Fund's ways of stimulating improvement in hospital practice in the early years of the NHS. It is a developing discipline and is likely so to continue while circumstances for which managers need to be prepared are subject to so much change and complexity. Now that management training has become established practice in the NHS, the College has begun to specialise and experiment.

In the last two years, the programme has included a growing range of short courses and seminars to meet the changing and immediate needs of the reorganised NHS. There is now a considerable emphasis on industrial relations and on planning procedures and techniques. Experimental courses have been introduced to meet the need of clinical members of district management teams. These courses deal with operational management problems within the clinicians' own experience to which they can relate more effectively.

During 1976 a review was undertaken of the College's programme against the background in the NHS of growing financial stringency and the pressures induced by social and political changes. The strengths of the College – its independence, ability to innovate and, in so doing, to take reasonable risks, its status – are factors to be built upon to ensure that it is used to best advantage. The movement away from routine courses to those which stimulate new thinking and set standards will continue. There is evident need to provide more of the College's activity within the practical setting of the NHS where training can be linked with research to improve the practice of the team locally responsible for service management. Given the College's attributes and the respect in which the Fund is held, a significant contribution towards improved management can be made in the present changing circumstances. This consideration of future policy is being undertaken in cooperation with the King's Fund Centre.

The Fund believes that a new training strategy for senior managers throughout the NHS is urgently needed. Systems

of professional education do not provide enough understanding of the interdisciplinary requirements of consensus management. Present training arrangements for senior managers tend to be piecemeal and inadequate, with little provision for continuing education after appointment. The working party set up in 1975 to study these issues, under the chairmanship of Dr Bryan Thwaites, has completed its work. The report to be published by the Fund will, it is hoped, provide data and informed comment of value to those responsible for management training generally in the NHS.

KING'S FUND CENTRE

The Centre moved from Nutford Place to its present home in Albert Street, Camden Town, in August. The new building was designed to advance the Fund's aim of bringing people together for discussion and study and to promote good practical ideas for improving health care. Topics discussed during the year are listed in the Centre's programme of conferences and meetings on page 31. They relate to the four current interests of the Centre: the provision of better services for people who need long-term care; the development of ideas which may lead to more efficient use of resources; the need to develop education and training, if necessary crossing traditional professional boundaries; the improvement of communication among all those working for and with patients.

The Centre's library, backed by a substantial document store, provides for private study, and the information service covers a very wide range of health service matters in the UK and abroad.

The management of the Fund's research and development activity is now undertaken by the Centre. Its extensive contact with health service people of all kinds and knowledge of their problems, enable the Centre to suggest studies and experimental projects and to take part in their development.

In general, the Centre's role is beginning to move away

from providing advisory services for the different professions towards a more functional approach to problems of mutual concern to professional and voluntary groups working in health care. The change is mainly one of emphasis and is reflected in the gradual introduction of a new pattern of staffing.

STUDIES ON MEDICAL SERVICES

Though the Fund is not involved in clinical research, it supports studies on the planning and organisation of medical care and has always sought to encourage the interest of doctors in the general administration of health services.

The group of studies on medical records, described in the two previous annual reports, has continued throughout the year. The department of community medicine of the University of Nottingham has completed its exploration of correlated systems in use in hospitals and general practice.

A steering committee with Sir George Godber as chairman is supervising a series of seminars designed to identify issues affecting costs and benefits of medical practice. The first seminar of some 30 doctors, nurses and other professionals, with representatives of patients, studied the management of minor illness. The papers are being edited for publication by the Fund. The second seminar studied the interface between hospital and community medical practice.

EDUCATIONAL LINKS AT HOME AND ABROAD

Universities and other centres of higher education provide facilities for some of the teaching experiments supported by the Fund and are involved in the work of the College and the Centre.

The Fund continues to provide opportunities for selected young people in the health services to widen their education through travel abroad. Annual bursaries enable a small group of doctors, nurses and administrators to visit medical centres in the United States. The venture has become

immensely popular with strong competition for places. The Fund's travelling fellowship scheme provides bursaries for younger doctors who are senior registrars or newly-appointed consultants based in London to pursue research projects at approved centres of medical training in Australia, and for London consultants to visit New Zealand. It is also the custom for the Fund to receive visitors from abroad who wish to study the British health care system. In recent years this has particularly included groups from the United States and Canada. Their contact with NHS staff can have worthwhile educational impact.

EMERGENCY BED SERVICE

The EBS has been managed by the Fund for hospital authorities in London since 1938. Its work flow is subject to wide fluctuation, between winter and summer and for many other reasons. Disruption of work in hospitals, for whatever cause – staff sickness, closure of wards, breakdown in equipment – can temporarily increase demand for the EBS, especially if hospitals have to restrict admissions. On the other hand, good working relationships between general practitioners and hospital doctors reduce the need for an intermediary service, and good organisation within a hospital speeds up admission procedures.

Health legislation has had marked effect: for example, the Clean Air Act which was prompted by the Great Smog of 1952 (when admissions arranged through the EBS reached 9500 in one month), and the Abortion Act of 1967. In addition, the new structure of the NHS has brought changes in the work of the EBS since 1974.

The cumulative effect has been a falling demand, particularly in the past 25 years in which the annual number of applications has almost halved. A study of these trends and of the operation of the EBS has been undertaken for the Fund by the management services division of the South-East Thames Regional Health Authority. The study forms part of the Fund's continuing review of all its activity. Some minor rearrangements in routine and in staffing have

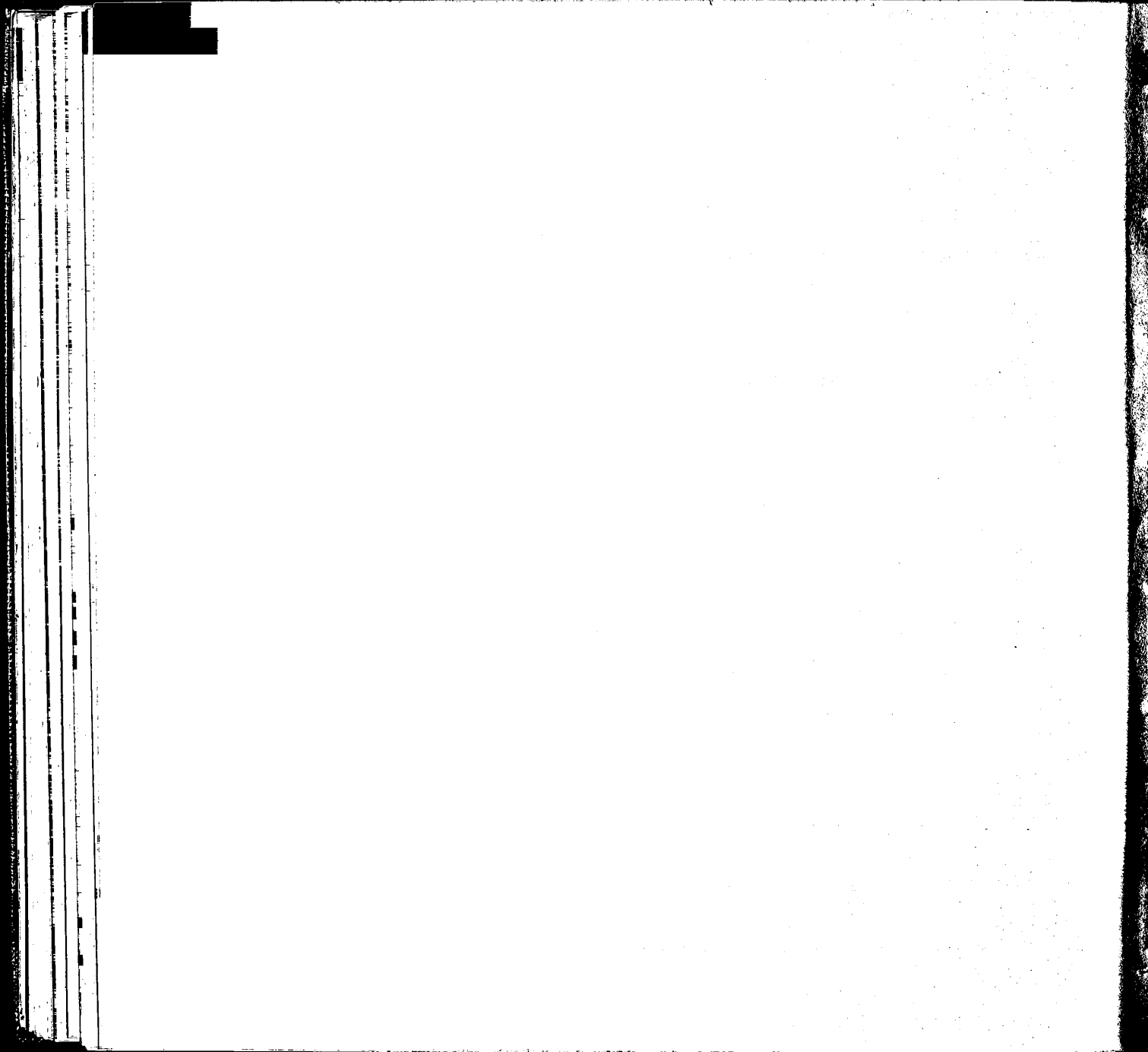
already been effected and the Fund is now considering with the four Thames RHAS what might best be done for the future of this important service. There is no question of any reduction in the service to general practitioners. But it has seemed that the time has come when the organisation and management of the EBS – which is in every way a part of the health service of London – should more appropriately be undertaken by the health authorities themselves.

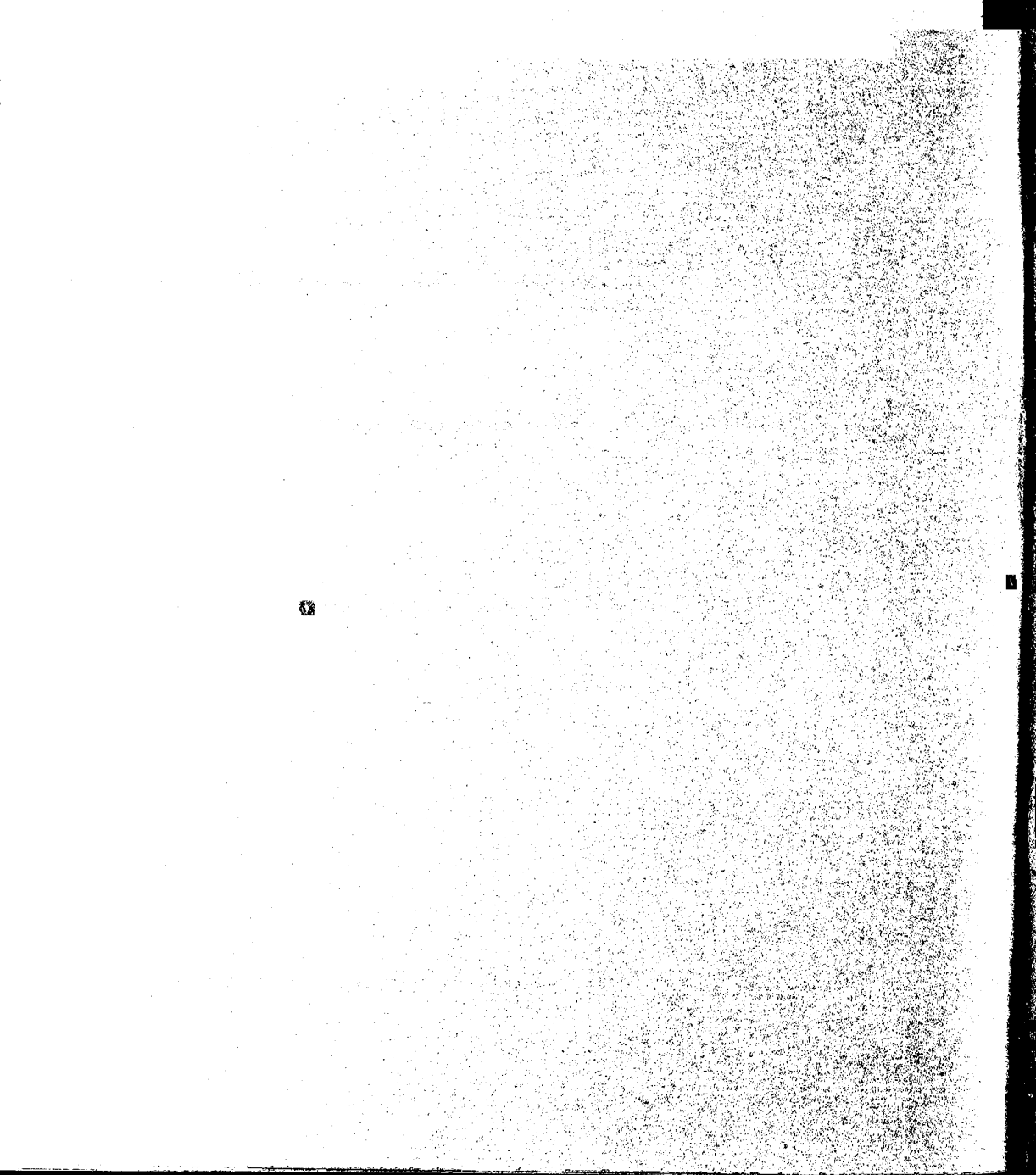
PUBLISHING

Almost every part of the Fund's publishing activity has changed since the early 1950s. The whole process has gradually been brought into line with professional publishing practice, from assessing work offered, through editing, production and costing, to distributing and marketing. The aim has been to keep costs within an economic limit without loss of quality and to move towards self-sufficiency. Money saved can be used for other purposes. At the same time, publishing is regarded as a service of the Fund. Production of titles considered to be of importance to the health services but unlikely to attract big sales may be subsidised.

Distribution and marketing have, since July, been undertaken by Pitman Medical Publishing Company Ltd. This has opened up a much larger readership and the Fund's titles are reported to be well received by booksellers throughout the country and abroad.

The presentation of this report coincides with the celebrations of the Silver Jubilee of Her Majesty the Queen. In this same year, the Fund completes 80 years of service to hospitals of London. All of us who serve the Fund look toward the coming years in the knowledge that, whatever difficulties they may bring, this independent foundation will continue to work for improvement in the care of patients as it has since its establishment as a permanent memorial to that other beloved queen, Victoria, in the year of her Diamond Jubilee.





FINANCE

The following pages (22 and 23) contain abridged financial statements extracted from the full accounts of the King's Fund, which are available on request. The statements show that at 31 December 1976 the total market value of the Fund's assets was £24 226 000 (1975 £24 029 000) and the income for the year £1 353 000 (1975 £1 376 000).

During the course of 1976 there was a significant increase in the total amount of investment in property, principally the new King's Fund Centre complex which was completed in August at a cost of some £2 750 000. The modest decline in income compared with the previous year reflects the realisation of certain quoted securities and withdrawal of deposits to meet these property commitments. The management of the Fund continues to exercise very careful

control over general expenditure and the total amount for the year, before the disbursement of grants, shows almost no change from the corresponding figure for 1975. With the continuing problem of rising costs within the country and numerous appeals to the Fund for additional support in the field of health care, it again seemed appropriate to make the net balance of income, which amounted to nearly £700 000, available for grants.

The Treasurer gratefully acknowledges all contributions that have been made to the Fund during 1976, and will also welcome any new sources of money which will enable the Fund to develop and augment its activities. Once again he would like to draw attention to the suitability of the Fund as an object for charitable legacies.

Bankers: Bank of England
Baring Brothers and Co Limited
Midland Bank Limited

Solicitors: Turner Peacock

Auditors: Deloitte and Co

KING EDWARD'S HOSPITAL FUND FOR LONDON

ABRIDGED STATEMENT OF ASSETS AND LIABILITIES AT 31 DECEMBER 1976

Valuation 31 December			Book Value 31 December	
1975 £	1976 £		1976 £	1975 £
		Capital Fund		
		Investments		
6 256 636	6 045 337	Quoted securities	4 524 690	4 650 822
81 951	70 520	Unquoted securities	84 027	100 372
<u>6 338 587</u>	<u>6 115 857</u>		<u>4 608 717</u>	<u>4 751 194</u>
11 733	152 609	Current assets	152 609	11 733
<u>6 350 320</u>	<u>6 268 466</u>		<u>4 761 326</u>	<u>4 762 927</u>
		General Fund		
		Investments		
7 699 672	6 984 728	Quoted securities	5 418 706	6 257 384
52 093	22 522	Unquoted securities	22 749	60 000
9 410 518	12 004 330	Properties, including Fund premises	8 722 220	6 501 905
—	—	Reversionary interests— nominal value	1	1
<u>17 162 283</u>	<u>19 011 580</u>		<u>14 163 676</u>	<u>12 819 290</u>
463 049	(1 108 809)	Net current assets (liabilities)	(1 108 809)	463 049
<u>17 625 332</u>	<u>17 902 771</u>		<u>13 054 867</u>	<u>13 282 339</u>
		Special Funds		
		Investments		
41 773	41 009	Quoted securities	52 716	59 567
11 780	13 793	Current assets	13 793	11 780
<u>53 553</u>	<u>54 802</u>		<u>66 509</u>	<u>71 347</u>
<u>£24 029 205</u>	<u>£24 226 039</u>	Total Net Assets	<u>£17 882 702</u>	<u>£18 116 613</u>

ABRIDGED INCOME AND EXPENDITURE ACCOUNT YEAR ENDED 31 DECEMBER 1976

	£	1976	£	1975	£
Income					
Investments		948 080		1 004 451	
Properties		395 995	1 344 075	362 084	1 366 535
Donations		7 772		7 161	
Legacies allocated to income		668	8 440	1 943	9 104
			£1 352 515		£1 375 639
Expenditure					
Grants allocated		697 962		695 278	
Less grants lapsed		24 637	673 325	26 400	668 878
King's Fund Centre		353 106		287 902	
Less contribution from DHSS	130 000				
from Thames RHAs	30 000	160 000	193 106	130 000	157 902
King's Fund College		361 939		330 769	
Less course fees received		129 620	232 319	81 174	249 595
Emergency Bed Service		227 586		194 915	
Less contribution from Thames RHAs		221 086	6 500	188 415	6 500
Publications		11 863		43 388	
Less sales		12 983	(1 120)	13 180	30 208
Administration					
Salaries and pensions		176 477		163 693	
Establishment and office		35 095	211 572	28 846	192 539
Other Expenses					
Maintenance of Fund premises		15 776		24 334	
Professional fees, etc		20 632	36 408	18 382	42 716
			1 352 110		1 348 338
Excess of Income over Expenditure for the year, transferred to General Fund			405		27 301
			£1 352 515		£1 375 639

CONTRIBUTORS IN 1976

Her Majesty The Queen
Her Majesty Queen Elizabeth The Queen Mother
Gloucester Charitable Trust

Anonymous ('E M E')

Bank of England
Barclays Bank Ltd
Baring Foundation Ltd
Bawden Fund
Miss A G Blaikie
Borges Trustee Co Ltd
British Association of Social Workers

Worshipful Company of Carpenters
A H Chester

Miss V Dodson

Miss W Edwards
Elsom Pack & Roberts

Gillett Bros Discount Co Ltd

Lord Hayter KCVO CBE
Miss E V Howells

Mrs G Inchbald
Innes Memorial Fund

Jensen & Son

Lloyds Bank Ltd
London & Northern Estates Co Ltd

Marks & Spencer Ltd
Metropolitan Bonded Warehouses Ltd
Midland Bank Ltd
Morgan Grenfell & Co Ltd

National Westminster Bank Ltd

Major R O'Brien MVO TD

P F Charitable Trust
Prudential Assurance Co Ltd

Albert Reckitt Charitable Trust
T B Robson
Sir James Paterson Ross Bt KCVO

St Vincent's Orthopaedic Hospital
Schwartz Buchanan & Co
O N Senior
Mrs R M Simon

Wernher Charitable Trust
L S White
Williams & Glyn's Bank Ltd
Judge R B Willis TD

LEGACIES RECEIVED IN 1976

N A Burchill
Dr F J Fahy
W H Harper Will Trust
Miss F E Milne
Miss L L Munro
R Perry
Dr G A O Schack-Sommer Will Trust
C H Taylor
Emile Wertheimer
Miss W F Willcocks

GRANTS MADE IN 1976**TO NATIONAL HEALTH SERVICE
AND LOCAL AUTHORITIES****Bromley AHA****CANE HILL HOSPITAL**towards renovation and extension of
social club

12 000

CHEYNE HOSPITAL

towards new bus

4 000

Camden and Islington AHA(T)**FRIERN HOSPITAL**

videotape equipment for staff training

9 000

City and East London AHA(T)**HACKNEY HOSPITAL**towards improvements to, and extension of,
postgraduate medical centre

5 000

ST MARK'S HOSPITALimprovements to dining room and kitchen
and renovation of entrance hall

7 500

Devon AHA**ROYAL WESTERN COUNTIES HOSPITAL**

printing pamphlet on abnormal offenders

500

Doncaster AHAmanagement audit in nursing services
(new one-year grant)

4 700

Ealing, Hammersmith and Hounslow AHA(T)**ST BERNARD'S HOSPITAL**

towards new sports and social club

7 500

Enfield and Haringey AHA**HIGHLANDS WING, ENFIELD****DISTRICT HOSPITAL**towards garden for unit for younger
handicapped people

1 500

Essex AHA**ST MARGARET'S HOSPITAL**

towards hydrotherapy pool

5 000

Guy's Hospital Special Trusteesstudy of interdisciplinary education in
health and welfare

20 000

study of issues of health policies

(final instalment on three-year grant)

£

16 000

Hertfordshire AHA**GARSTON MANOR MEDICAL****REHABILITATION CENTRE**

towards functional assessment unit

15 000

HILL END HOSPITALtowards refurnishing and extension of
staff club

10 000

Kensington and Chelsea and**Westminster AHA(T)****MARLBOROUGH HOSPITAL**

towards setting up family day unit

12 500

ST CHARLES' HOSPITAL

renovating tennis court

1 875

ST MARY'S HOSPITAL

towards building flower shop

1 500

ST STEPHEN'S HOSPITAL

towards covered way to chapel

2 000

Merton, Sutton and Wandsworth (AHA)T**HENDERSON HOSPITAL**

towards recreational complex

7 000

OSBORNE HOUSEtowards improvements to patients'
accommodation

10 000

QUEEN MARY'S HOSPITAL,**ROEHAMPTON**

(League of Friends)

wheelchairs

873

ST GEORGE'S HOSPITALexperimental training scheme for hospital
chaplains (first instalment on three-
year grant)

2 000

ST JOHN'S HOSPITALstudy of use of psychogeriatric assessment
teams for non-urgent referrals

410

Middlesex Hospital Special Trustees

comparative study of medical outpatients departments in London hospitals (first instalment on two-year grant)

10 546

consumer-based study to improve treatment of patients in hospital

4 750

evaluation of multidisciplinary teaching in geriatrics

2 250

study of needs and responses of patients to care in hospital and by community services (first instalment on two-year grant)

10 000

National Hospitals College of Speech Sciences (Hampstead Branch)

towards stocking library

600

Northamptonshire AHA

towards setting up joint information unit with Northamptonshire County Council (second instalment on three-year grant)

3 500

Prince of Wales General Hospital Academic Trust

towards fitting out library in postgraduate centre

1 000

Redbridge and Waltham Forest AHA LEYTONSTONE HOUSE HOSPITAL

towards new bus

4 000

Royal Hospital of St Bartholomew Special Trustees

appointment of production engineer to develop and evaluate appliances for handicapped people (first instalment on three-year grant)

8 333

Royal National Throat, Nose and Ear Hospital BoG

towards works in kitchen in staff hostel

5 000

St Thomas' Hospital Special Trustees

development of user-related financial information system (first instalment on two-year grant)

7 000

experimental appointment to develop common policy on management-research relationship (final instalment on two-year grant)

4 500

Dr John Stevens

study of outcome of primary care

2 801

Surrey AHA**NETHERNE HOSPITAL**

towards coffee lounge in staff cafeteria

10 000

£230 138**TO INDEPENDENT HOSPITALS AND HOMES****I'Arche in Lambeth**

kitchen and other equipment

2 070

Banstead Place, Banstead

towards extension of dining room

2 500

Banting House, Worthing

new stair carpet

324

British Home and Hospital for Incurables, London SW16

curtain tracks for all wards

3 000

Catisfield House, Hove

towards stair carpet and new beds

900

Convalescent Hospital for Officers, Brighton

new beds and electric steriliser

1 100

Dedisham School for Autistic Children, Slinfold

emergency generator

1 000

towards improvements to staff quarters

2 340

Denville Hall, Northwood

washing machine

700

Edith Priday Home, London SE3

towards fire precautions

1 500

The Elms, London SE22

towards fitting lift

2 000

Florence Nightingale House, London SW5

towards equipment for laundry

1 000

Fonthill, Reigate

towards improvements in kitchen

2 500

	£
Harrison Homes, London W11 towards renovation of rest home	2 750
House of St Barnabas in Soho, London W1 food lift	1 500
Howard House, Gerrards Cross rewiring	1 710
Jewish Home and Hospital at Tottenham, London N15 towards improvements to lavatories and bathrooms	2 000
London and Ascot Priory, Ascot towards new floor covering	1 000
Lulworth Court, Westcliff-on-Sea towards renovation and new equipment	734
Manor House Hospital, London NW11 towards replacing pipe-lagging	2 750
Maurice House, Westgate-on-Sea towards improvements to lavatories and bathrooms	2 000
Nightingale House, London SW12 towards setting up dental surgery	1 000
Noah's Ark Trust, London N22 fire precautions	2 100
Royal Hospital and Home for Incurables, London SW15 towards modernisation and upgrading	5 000
St Christopher's Hospice, London SE26 towards works to increase number of beds	7 000
St David's Home for Disabled Exservicemen, London W5 towards replacing boilers	5 500
St Francis de Sales School, Hayling Island towards fire precautions	2 000
St Luke's Nursing Home for the Clergy, London W1 towards installing new boiler	1 000

	£
St Teresa's Hospital, London SW20 towards various improvements	500
SCODA towards fire precautions in short-stay unit	3 000
Servite House, London SW10 fire precautions	2 000
Spelthorne St Mary, Thorpe towards furnishings and bench tops in craftsroom	1 046
Star and Garter Home for Disabled Sailors, Soldiers and Airmen, Richmond-on-Thames towards modernisation	5 000
Suffolk House, Uxbridge towards minibus	2 500
Tyrwhitt House, Leatherhead towards fire precautions	3 400
White House Convalescent Home, Bexhill-on-Sea towards redecorating	750
Yarburgh Children's Home, East Grinstead new mixer in kitchen	400
Expenses of convalescent homes conference and staff visits	918
Token grants to 18 homes and 11 hospitals	2 900
	<hr/> £81 392

TO ORGANISATIONS AND EDUCATIONAL CENTRES

Association of Domestic Management appointment of organising secretary	2 250
Association of Independent Hospitals and Kindred Organisations towards running costs	1 000
Bermondsey and Brook Lane Medical Missions towards minibus	2 000

	£
Mental After-care Association	
towards fire precautions in Clifton House, Bournemouth	3 500
shower units in two homes	900
National Association for Mental Health (MIND)	
towards expenses of nurse tutors in psychiatry and mental handicap on special course to improve teaching skills (one-year grant)	4 160
towards setting up walk-in information and advisory service (final instalment on two-year grant)	3 000
National Children's Bureau	
towards setting up voluntary council for handicapped children (final instalment on two-year grant)	3 000
National Council for Special Education	
publishing book on hospital schools for the mentally handicapped	1 000
National Society for Cancer Relief	
towards fitting out continuing care unit at Mount Vernon Hospital	25 000
National Society for Mentally Handicapped Children	
printing pamphlet on adult education	400
one-to-one project, to encourage use of volunteers in hospital and community services (additional grant)	2 250
Open University bursaries	
for staff in Thames and Wessex RHAs to attend courses on community care of handicapped people (additional grant)	780
Paintings in Hospitals	
(final instalment on five-year grant)	3 500
Psychiatric Rehabilitation Association	
towards fire precautions for Nicholas House, London E2	5 000
Richmond Fellowship	
towards refurnishing Crescent House	1 500

	£
ROMA Housing Association	
towards setting up new hostel	2 000
Royal College of General Practitioners	
towards cost of study day on care of dying patients	200
Royal College of Nursing	
publishing directory of nursing trusts and funds	550
Royal College of Physicians of London	
towards setting up medical services study unit	42 500
Royal Society of Arts	
industrial design bursaries: hospital equipment section	500
Southwark Diocesan Handicapped Children's Association	
towards setting up short-stay unit (Cabrini House)	2 500
Spinal Injuries Association	
towards running costs (final instalment on three-year grant)	4 000
Toy Libraries Association	
towards development (final instalment on four-year grant)	3 000
Toynbee Hall	
towards flats for families with mentally handicapped children (first instalment on three-year grant)	4 000
University of Edinburgh department of nursing studies	
evaluation study of management audit in nursing services (final instalment on two-year grant)	6 175
University of Liverpool	
bursaries for nurses undertaking MSc course (in memory of Miss Anne White)	5 000
University of Manchester department of geriatric medicine	
follow-up study of geriatric day hospitals	2 825

	£
University of Southampton	
towards experimental diploma course on management for remedial professions	3 500
Volunteer Centre	
towards cost of new premises	15 000
	<hr/> £248 900

IN-HOUSE GRANTS

Authors' fees 390

**Brunel University/King's Fund joint
appointment (PJT)**
to King's Fund College 5 800

**Combined training for remedial
professions (PJT)**
experimental scheme in association with
Polytechnic of Central London (extra grant) 9 946

Community health councils project (WGC)
to continue project until autumn 1976 4 000

Emergency Bed Service
alterations to operations room 5 000

King's Fund travelling fellowships (GAP) 5 000

Language barrier (WGC)
to prepare booklets for hospital staff
on customs and backgrounds of overseas
patients 4 250

Medical records project (GAP)
group of studies in use of problem-oriented
medical records, and of current records
systems, role and work of medical records
officers 73 453

**Association of Medical Records
Officers** (additional grant, £15 453)

Guy's Hospital (first instalment on
new two-year grant, £50 000)

Royal Free Hospital (final instalment
on three-year grant, £4500)

University of Nottingham (final
instalment on three-year grant, £3500)

	£
Mental handicap services project (JR)	
to develop ways of improving services (final instalment to wind up project)	9 535
Overseas travel grants (GAP)	10 500
Patients' satisfaction studies	
opinion survey of old people in hospital (DMH)	1 800
Performance, priorities and policies in medical care (WGC)	
seminars to reappraise health care policies and objectives	5 350
Residential accommodation for visitors to the King's Fund (GAP)	2 508
	<hr/> £137 532
Total of grants made in 1976	£697 962

Note: Initials in brackets are those of the staff member who can give detailed information on the project concerned. See Staff Directory, pages 36-37, for name and address.

KING'S FUND CENTRE CONFERENCES, MEETINGS AND DISPLAYS

CONFERENCES

Long-term care

Living in hospital
Personalised clothing

Mental handicap

Employment
Parents and professionals
Professional training
Services for children

Nursing

Future of nursing education
Psychiatric units in general hospitals
Research and nursing education
Theory and practice
Ward management
Ward policies in psychiatric hospitals

Other topics

Problems of the deaf
Retirement planning for NHS staff
Stoma care
Volunteers, their use and preparation in NHS

SMALL MEETINGS

Day centres for emotionally disturbed children
House journals
Infant feeding in 1970s
Long-term care
Management training in developing countries
Medical services for offenders
Night care for patients at home
Patients and staff
Play for children in hospital
Units for the younger disabled
Walk-in clinics for young people
Ward appraisal system

DISPLAYS

Aids for people with speech, reading and
writing difficulties

Occupational therapy

Photography for the disabled

Audio-visual programmes*

Elderly mind

Growing needs of the growing old

Mental handicap: environment and opportunity

Notes: Forthcoming events at the Centre and the College are listed in the King's Fund Newsletter, available from the King's Fund Centre, 126 Albert Street, London NW1 7NF.

The centre is also available to other organisations for conferences and meetings. Enquiries to the conference secretary.

*These programmes developed by the King's Fund Centre may be hired from Medical Recording Service Foundation, P O Box 99, Chelmsford, Essex CM1 5HL.

**KING'S FUND COLLEGE
ACADEMIC YEAR 1976-7
COURSES AND SEMINARS**

Administrators' development
Management appreciation for hospital consultants
and senior registrars
Management appreciation for medical members of
district management teams and area teams of
officers
National administrative trainees
Senior management development

Special and experimental courses and seminars

Administrators of independent hospitals
Industrial relations – district and area policies
– implications for NHS of new
legislation

Long-stay care
Management of surgical resources
Patient care planning
Press and public relations in the NHS

Courses with overseas membership

Canadian health service executives
Delivery and organisation of health care in USA
(British doctors, nurses and administrators)
European conference
Health service organisation for American students
(medicine, nursing and administration)
International seminar for administrators
Nursing representatives within the EEC
Study tour: Institute of Health Sciences,
University of Amsterdam

GENERAL COUNCIL

Governors:

HRH Princess Alexandra, The Hon Mrs Angus Ogilvy GCVO

Sir Andrew H Carnwath KCVO DL

Lord Cottesloe GBE TD

The Lord Chancellor
The Speaker of the House of Commons
The Bishop of London
Cardinal Hume
The Reverend G A D Mann HCF
The Chief Rabbi
The Lord Mayor
The Chairman of the Greater London Council
The Governor of the Bank of England
The President of the Royal College of Physicians
The President of the Royal College of Surgeons
The President of the Royal College of Obstetricians and Gynaecologists
The President of the Royal College of General Practitioners
The President of the Royal College of Nursing
The President of the Institute of Health Service Administrators
The Chairman of each of the four Thames Regional Health Authorities
Professor Brian Abel-Smith MA PhD
G F Abercrombie VRD MD
Lord Ashburton KG KCVO JP
H C Belk MA LLB
Sir Desmond Bonham-Carter TD
J R G Bradfield PhD MA
Sir Robin Brook CMG OBE
Lady Brooke of Cumnor DBE
Sir Andrew H Carnwath KCVO DL
Lord Catto
Lady Clitheroe
P H Constable OBE
C A Cooke OBE LLD JP
Lord Cottesloe GBE TD
J O F Davies CBE MD FRCP DPH
R J Dent
Peter F Evans
Hugh Farmar
Arthur Franks OBE
Sir George Godber GCB DM FRCP DPH FFCM
S M Gray BA FCA
Sir Maurice Hackett OBE

Lady Hamilton OBE MA
Brigadier Sir Geoffrey Hardy-Roberts KCVO CB CBE
Michael Hargreave VRD
D G Harington Hawes
S C Harris OBE JP
Lord Hayter KCVO CBE
G P E Howard
Lord Inman PC JP
G J A Jamieson
Sir Francis Avery Jones CBE MD FRCP
C E Kevill-Davies CBE JP
Captain A Lade OBE RN
Edgar Lawley CBE
The Countess of Limerick
Lord Luke KCVO TD DL JP
Professor Ian McColl MS FRCS
W G MacKenzie VMH
C J Malim CBE
Sir Rennie Maudslay KCVO MBE
R A Mickelwright OBE FHA
George Mitchell CBE JP
A H Montgomery OBE
Hon Mrs John Mulholland DCVO
Marquis of Normanby CBE
Major R O'Brien MVO TD
H M O'Connor OBE TD
Commander R W Peers RN
Sir Michael Perrin CBE
Dame Muriel Powell DBE
Sir John Prideaux OBE
Lord Rayne
Miss A B Read MBE
Sir John Richardson Bt MVO MD FRCP
Sir Kenneth Robson CBE MD FRCP
Lanning Roper
Sir James Paterson Ross Bt KCVO MS FRCS LLD
Sir Graham Rowlandson MBE JP FCA GLC
Miss M J Roxburgh OBE
Hon Peter Samuel MC TD
The Baroness Serota
Professor G A Smart BSc MD FRCP
George Somerville MD DPM
Selwyn Taylor DM MCh FRCS
Bryan Thwaites MA PhD FIMA
Professor Sir Ronald Tunbridge OBE MD FRCP JP
Lord Wardington
Major Simon Whitbread JP
Sir Edgar Williams CB CBE DSO
Sir Hugh Wontner CVO
Sir Henry Yellowlees KCB FRCP FFCM

MANAGEMENT COMMITTEE

Lord Hayter KCVO CBE Chairman

Sir Robin Brook CMG OBE

R J Dent

Sir George Godber GCB DM FRCP DPH FFCM

S M Gray BA FCA

Sir Francis Avery Jones CBE MD FRCP

(Deputy Chairman)

The Countess of Limerick

Professor Ian McColl MS FRCS

Mrs B F R Paterson CBE JP

Professor G A Smart BSc MD FRCP

Selwyn Taylor DM MCh FRCS

Publications Panel

Sir Robert Lusty Chairman

Professor W W Holland MD FRCP FFCM

Sir Francis Avery Jones CBE MD FRCP

Stephen Lock MA MB BChir FRCP

L H W Paine MA AHA

FINANCE COMMITTEE

R J Dent Chairman

The Governor of the Bank of England

Lord Catto

Sir Eric Faulkner MBE

G J A Jamieson

Lord Rayne

Lord Wardington

ESTATES COMMITTEE

R J Dent Chairman

J R G Bradfield PhD MA

C A Cooke OBE LL D JP

G J A Jamieson

Lord Rayne

AUXILIARY HOSPITALS COMMITTEE

Richard Hough Chairman

S N Abbott

C C Croggon

Miss K M Cunnew AIMSW

Miss D G Dedman BA AIMSW

Mrs Geoffrey Inchbald

Sir Robert Lusty

Hon Mrs John Mullholland DCVO

A P Norman MBE MD FRCP

Mrs M Potter

Paul R Smith MA FIA

Gerald M A Turner MB FRCP Edin

D E Yarrow MB BCh DCh

EDUCATION COMMITTEE

Professor G A Smart BSc MD FRCP Chairman

Miss I C S Brown SRN RSCN RNT

Miss W Frost OBE

W J McQuillan MB BCh LM DPH DCH FFCM

R M Nicholls BA DSA AHA

B L Salmon CBE

S H A Shaw LLB FHA FCIS JP

A H Vause BA(Com) ACA ATII

Adviser on Hospital Law

S R Speller OBE LLB PhD

EMERGENCY BED SERVICE COMMITTEE

Sir George Godber GCB DM FRCP DPH FFCM
Chairman

Miss M A Day SRN

D J Marlow AHA

J S Norell MRCGP

P G Roads MD DPH FFCM

Major-General N C Rogers MB BS FRCS

R H Sandford Smith FCIS FBIM

J A Saunders MA MRCGP

HOSPITAL GRANTS COMMITTEE

Sir Robin Brook CMG OBE Chairman

Mrs C B Bicknell

T W Borges

J J Bradley MB FRCP FRCPsych DPM

N F Coghill MA MB FRCP

Captain A Lade OBE RN

C J Malim CBE

A L Markham

A H Montgomery OBE

L Phipps OBE

Miss Eileen Skellern OBE SRN RMN RNT

P E Sylvester MRCPsych MRCPsych

J T Woodlock

Garden Advisers

W G MacKenzie VMH

J Newell

Lanning Roper

Dietetic Adviser

Miss B R Stanton SRD

KING'S FUND CENTRE COMMITTEE

Professor Ian McColl MS FRCS Chairman

A J Brooking MA FHA

Miss J F Carré SRN SCM QN HV

Raymond T Clarke OBE MA JP

W G Harding FRCP FFCM DPH

M G Lillywhite

D C Ower TD MB BS DObstRCOG

K R D Porter MBE FRCP FFCM

John L Stevens MA MSc FRCGP

Miss Rosemary Stewart PhD MSc(Econ)

Miss J M Wheeler BA SRN SCM RNT

RESEARCH AND DEVELOPMENT COMMITTEE

Sir George Godber GCB DM FRCP DPH FFCM
Chairman

H Baderman BSc FRCP

J L T Birley MRCP DPM

Professor George W Brown BA PhD

Miss Oriole Goldsmith MA FHA

R Himsworth MD MRCP

Sir Francis Avery Jones CBE MD FRCP

R L Lindon MRCS LRCP DPH DCH FFCM

Professor Ian McColl MS FRCS

W J McQuillan MB BCh LM DPH DCH FFCM

Robert J Maxwell MA ACMA JP

Professor D C Morrell MRCP FRCGP

W E Randall DFC AFC FCII

Miss Rosemary Stewart PhD MSc(Econ)

Peter Westland

STAFF DIRECTORY

KING'S FUND HEAD OFFICE 14 Palace Court W2 4HT Telephone: 01-727 0581

Secretary: G A Phalp CBE TD
Deputy Secretary: E D Halton

Adviser on Industrial Relations: N Bosanquet
Assistant to the Finance Officer: Mrs K Gomez
Estates Administrator: Lieutenant-Colonel
J D Goodship
Finance Officer: A B Chappell IPFA
Grants Secretary: E D Halton
Information Officer for European Health Services:
Irfon Roberts MA FHA

General Enquiries: Mrs P I Wynne-Ellis

KING'S FUND PUBLISHING AND PRESS OFFICE 126 Albert Street NW1 7NF Telephone: 01-267 6111

Secretary: Elizabeth Lucas

KING'S FUND CENTRE 126 Albert Street NW1 7NF Telephone: 01-267 6111

Director: W G Cannon MA FHA

Assistant Directors: Miss H O Allen SRN SCM RNT
D J Downham MBE DMA FHA
D M Hands MPhil FHA AMBIM
K Morton BA FHA

Administrator: A F J Chidgey
Catering Officer: Miss E J R Kydd LHCIMA
Conference Secretary: Mrs M E Aston
Designer-draughtsman: D G Ewbank
Equipment Adviser: S G Wakeling
Nursing Officer: Mrs H G Edwards SRN Dip Soc

Architectural Adviser
S E T Cusdin OBE DSc AADip FRIBA

LIBRARY AND INFORMATION SERVICES
Librarian: Mrs J M B White ALA
Assistant Librarian: Mrs M E Gordon BA Hons
Information Officer: R G Bennett

SPECIAL PROJECT **Long Term Care**

Project Officers: Mrs W M Arnett-Rayson SRN RFN
Mrs J Rush SRN Dip Soc

KING'S FUND COLLEGE
2 Palace Court W2 4HS
Telephone: 01-229 9361

Director: P J Torrie FWSOM

Tutors:

N Bosanquet BA MSc (Econ)

W J Fraser MA

Miss S A G Garrett SRN RNT

Miss M E Goose MA AHA

Miss M D Hamilton BA AHA

D M Hands MPhil FHA AMBIM

J A Sharpley BSc (Soc) AHA

J E P Simpson MA FRCS

Administrator: B S Satchell AHA MRSH

Registrar: Miss B Steele

Librarian: Mrs N M Badger

Visiting Adviser: Sir Bruce Fraser KCB

KING'S FUND EMERGENCY BED SERVICE
Fielden House
London Bridge Street SE1 9SG
Telephone: 01-407 7181

Secretary: John Ranken BA MIPM

Deputy Secretary: Miss Rita V Sharpe

Senior Watchkeepers: Miss Monica Craig

Mrs Mary Delamare

Mrs Daphne MacLean MBE

Miss Thelma Park

Regional Medical Admissions Officers:

A de Silva OBE MB BS

D R V Prys-Jones MRCS (Eng) LRCP (Lond)

[illegible]

