

NOT TO BE REMOVED FROM
LIBRARY - ONLY COPY IN
EXISTENCE.

KING EDWARD'S HOSPITAL FUND FOR LONDON

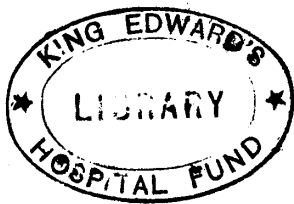
REPORT

BY THE

HOSPITAL ECONOMY COMMITTEE
ON UNOCCUPIED BEDS

FOR THE YEAR 1929

July 1930



KING EDWARD'S HOSPITAL FUND FOR LONDON,
7, WALBROOK, LONDON, E.C. 4.

Price 1s. 0d. net; 1s. 3d. post free.

HOH-E
kin

HOH-E
kin

THE HOSPITAL CENTRE
24, NUTFORD PLACE, W.1

LIBRARY

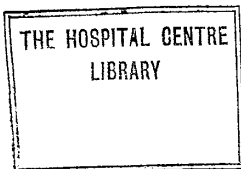
Date of
Purchase

HOHE

Book Ref. No.

1049(2)

Kin



CONTENTS.

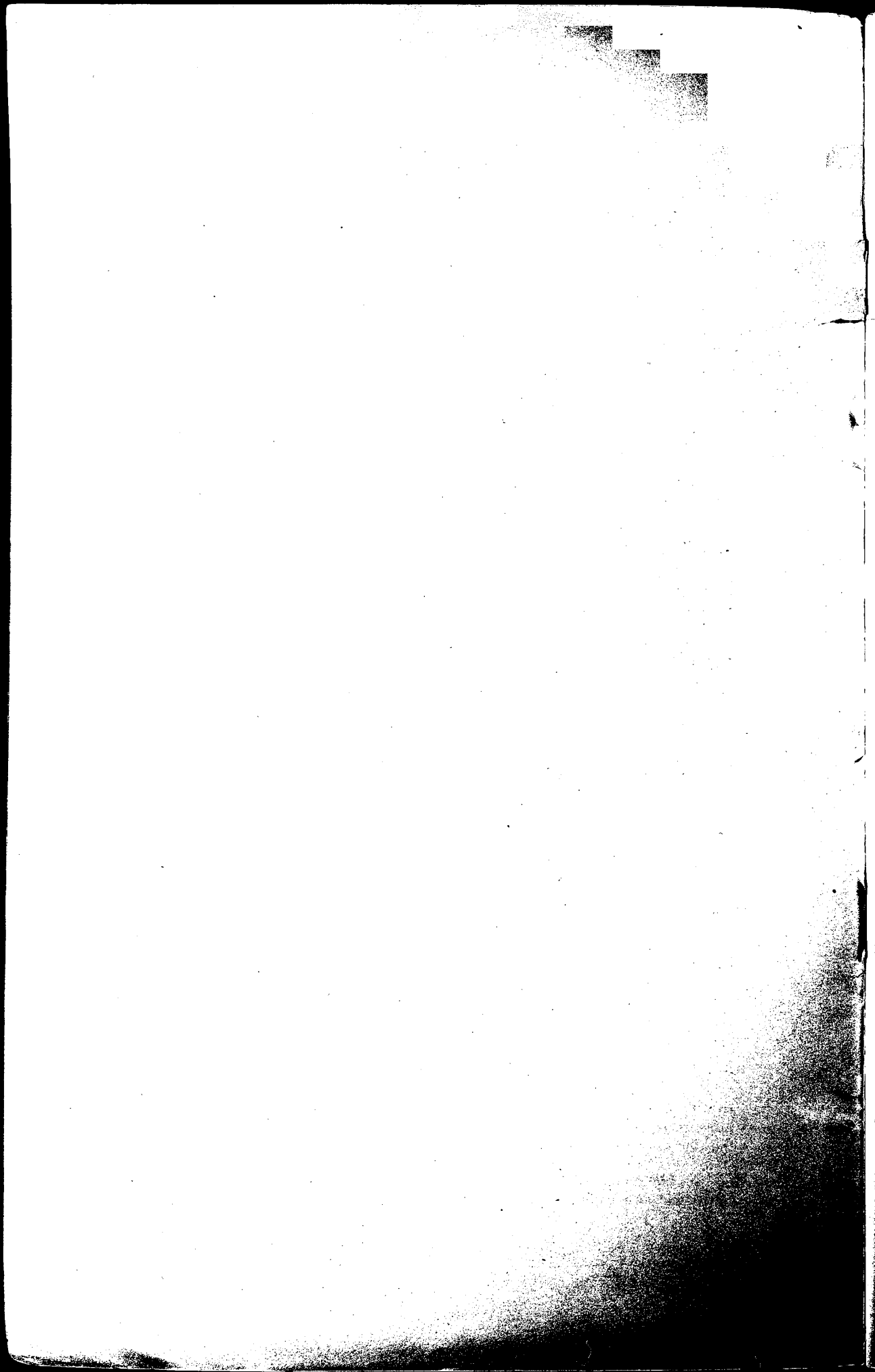
	PAGE
Prefatory Note	3

SECTION A.	BEDS TEMPORARILY CLOSED	13
-------------------	--------------------------------	----

SECTION B.	BEDS VACANT BETWEEN THE DIS- CHARGE AND ADMISSION OF PATIENTS	23
-------------------	--	----

SECTION C.	ANALYSIS SHOWING THE RELATIVE INCI- DENCE OF VACANCY IN BEDS ALLOCATED TO MEN, WOMEN AND CHILDREN IN THE MEDICAL AND SURGICAL WARDS (EXCLUDING MATERNITY AND GYNÆCO- LOGICAL BEDS)	39
-------------------	--	----

APPENDIX.	Notes supplied by Hospitals... ..	53
------------------	-----------------------------------	----



PREFATORY NOTE.

1. In 1928 the Hospital Economy Committee of the King's Fund decided to enquire into the causes giving rise to unoccupied beds at the Hospitals included in the Fund's annual Statistical Report, as there was a very wide range in the percentages of occupation, while, for all the Hospitals taken together, the general average of the daily number of unoccupied beds showed a tendency to become stable at about 17 per cent.

2. After consultation with the Secretaries of several Hospitals, a questionnaire dealing with the figures for 1927 was issued, and the information contained in the replies of the Hospitals was embodied in a special Report which was circulated privately to the Hospitals concerned. The enquiry revealed that some Hospitals were not in a position to give the required information owing to the absence of the necessary records; it also showed that there were considerable differences in practice in counting beds. In some cases the internal daily records were not sufficiently comprehensive to yield readily all the information that should be before those responsible for the administration of a Hospital to enable them to secure that the fullest use practicable is made of the beds. The Fund therefore drew up definitions of various statistical terms used in connection with hospital accommodation and circulated recommendations to the Hospitals with a view to the improvement of the daily records.

3. The figures obtained from the enquiry on the 1927 figures being inconclusive, the Hospital Economy Committee decided that a further enquiry should be made after the Hospitals had been given time to frame their records so as to provide all the information required. A questionnaire was accordingly issued to cover the figures for 1929. An analysis of the information contained in the replies to this questionnaire is set out in detail in the Tables published in this Report.

4. In the absence of comparative figures covering several years, it is impossible to say to what extent, if any, the figures of vacancy shown in the Report are abnormal, apart from any light that may be thrown upon the figures of an individual Hospital by the notes contained in the Appendix. It may be stated, however, that neither the figures taken as a whole nor, in general, the Group figures show any great difference from those of 1927 obtained in the enquiry to which reference is made in par. 2. As sufficient data is not available, no attempt is made in this Prefatory Note to draw any conclusions, and its scope is limited to summarising some of the principal figures and to some general remarks bearing upon the subject as a whole. The attention of each Hospital is, however, earnestly directed to the individual figures, so that investigation may be made into any of its figures that seem to call for enquiry.

5. The complement of beds in the Hospitals reviewed in the Fund's Statistical Report has increased from 12,590 for 112 Hospitals in 1920

to 16,120 for 138 Hospitals in 1929, and the percentage of the complement unoccupied has ranged from 16 to 19 per cent., averaging 17 per cent. The following table shows the figures for the last ten years :—

TABLE I.

Year.	Number of Hospitals.	Complement of Beds, December 31.	Average daily No. of Beds occupied during year.	Percentage of complement occupied.	Percentage of complement unoccupied.
				Per cent.	Per cent.
1920	112	12,590	10,470	83	17
1921	113	12,290	10,340	84	16
1922	113	12,420	10,190	82	18
1923	116	13,000	10,500	81	19
1924	118	13,460	10,960	81	19
1925	118	13,700	11,460	84	16
1926	134	14,470	12,020	83	17
1927	136	15,040	12,430	83	17
1928	136	15,640	12,980	83	17
1929	138	16,120	13,440	83	17

The complement shown in Table I represents all the beds which formed part of the permanent bed equipment of the Hospitals at the end of each year, including those closed temporarily from any cause. The complement of a Hospital may change during the year; it may be increased by the addition of new permanent beds; more rarely it may be decreased by the permanent closure of some of the beds. During this period of change the complement of the Hospital will vary, and the complement at the end of the year will not represent what has been the average daily complement throughout the year, to which the average daily occupation, in relation to the complement, should correctly be referred. The percentages in the above table are based on the complement at the end of the year, as the average daily complement during the year is not known for the years prior to 1927; percentages based on the average complement would not, however, differ materially from those shown (e.g. for 1929, the percentage based as in the above table is 83·4; based on the average complement it is 84·2, see (7) in Table II below). In the following pages, dealing with the figures of 1929, the average complement is used.

6. Two factors govern the number of unoccupied beds: (1) the number of Beds Closed temporarily from causes either normally or not normally recurring; (2) vacancies occurring between the discharge of patients and the admission of new patients.

During 1929 the average complement of beds was 15,952, and of this number on the average 519 were closed daily and 2,057 were vacant daily between the discharge and admission of patients.

TABLE II.

	Average daily Number of Beds.	Percentage of Average Complement.	Percentage of Average Open.
(1) Average complement	15,952	Per cent. 100	Per cent.
(2) Less closed temporarily :			
(i) From causes not normally recurring 166			
(ii) From causes normally recurring 353	519	3·3	
(3) Average Open	15,433	96·7	100
(4) Less vacant between the discharge and admission of patients ..	2,057	12·9	13·3
(5) Average occupied (excluding Temporary)	13,376	83·8	86·7
(6) Add Temporary	66	0·4	0·4
(7) Total average occupied (including Temporary)	13,442	84·2	87·1

The figures in the first column represent the averages of the daily counts recorded by the Hospitals throughout the year. The total shown above (13,442) differs slightly from that (13,445) shown in the Fund's Statistical Summary, as the latter figure is based on the published Reports of the Hospitals in which this figure is not always calculated to a decimal place.

The "average daily complement" is obtained by recording the complement for each day in the year and dividing the total obtained by the addition of these daily figures by the number of days in the year, while the average daily number of open beds is obtained by deducting from the complement the number of beds closed daily.

BEDS TEMPORARILY CLOSED.

(See Section A, pages 14 to 20, for particulars of each Hospital and page 21 for Group Summary.)

7. The causes of closure not normally recurring were analysed under building, reconstruction and miscellaneous other causes, such as the difficulty of providing Nursing Staff. The average number of beds closed daily from all these causes was 166, or 1·04 per cent. of the average complement.

TABLE III.
BEDS CLOSED FROM CAUSES NOT NORMALLY RECURRING.

Cause of Closure.	Average daily Number of Beds closed.	Percentage of the Average Complement.
1. Building and Reconstruction	143	Per cent. 0·90
2. Miscellaneous	23	0·14
	166	1·04

8. The causes of closure normally recurring were analysed under cleaning, redecoration and repairs, infection, staff holidays and miscellaneous causes. All these causes together accounted for 353 beds daily, or 2·21 per cent. of the average complement.

TABLE IV.
BEDS CLOSED FROM CAUSES NORMALLY RECURRING.

Cause of Closure.	Average daily Number of Beds closed.	Percentage of the Average Complement.
1. Cleaning, Redecoration and Repairs	222	Per cent. 1·39
2. Infection	88	0·55
3. Staff Holidays	(0·2)	(0·001)
4. Combinations of the above three causes, and miscellaneous other causes	43	0·27
	353	2·21

9. It is to be remembered that while the closure of beds does not necessarily occur in each Hospital in every year, it is inevitable for all Hospitals at some time or other; the closure of beds is therefore not necessarily an index of the efficiency of the Hospitals or of their endeavour to utilise their available beds to the fullest extent.

10. Attention must, therefore, be focussed rather on the number of beds vacant between the discharge and admission of patients. The Beds Vacant number four times as many as the Beds Closed.

BEDS VACANT.

(See Section B, pages 24 to 35, for particulars of each Hospital and page 36 for Group Summary.)

11. A low all-over ratio of vacancy in the beds of a Hospital may cover a high ratio of vacancy in some beds through the operation of a very low ratio of vacancy in other beds. An enquiry into vacant beds therefore involves some segregation of the beds into various categories. With the exception of a few special Hospitals dealing with only one type of case in which no question of internal classification arises, all Hospitals do classify their beds to some extent according to the kind of the case admitted to a bed or according to the sex or age of the patients or on more than one of these bases. The varying circumstances obtaining at different Hospitals limited in some degree the classes of beds for which separate figures could serve any useful purpose in a general enquiry.

The beds were therefore classified, for the purpose of this Report, into: Medical; Surgical; Medical or Surgical (i.e. available for either kind of case); Maternity; Gynæcological; Accident; Isolation, Observation and Septic; Pay; Staff; and the Medical, the Surgical, and the Medical or Surgical Beds were further analysed into Male, Female and Cots.

12. Before any inferences are drawn from figures of vacant beds, one or two considerations must be borne in mind :—

(a) The large general Hospital, with its many special departments, may have a greater difficulty in keeping its beds in constant occupation than the smaller Hospital. The apportionment of beds among numerous sub-divisions and specialties of medicine and surgery increases the number of water-tight compartments, e.g. throat cases cannot be admitted into eye beds, nor orthopædic cases into neurological beds.

(b) If a Hospital is to make adequate provision for accident and other emergency cases it is essential that there should always be a sufficient number of empty beds for such unforeseen cases, as arrangements for admission cannot be made beforehand. A high percentage of vacancy in beds reserved exclusively for accidents should not, therefore, be criticised as showing that a Hospital is not making the fullest effective use of its beds.

(c) It is to the interest of a Hospital, and an indication to some extent of its efficiency and health, that certain classes of beds should be as empty as possible. For example, the isolation, septic and staff beds should be empty, for this means that there is no infectious disease, that the surgical treatment of the cases is so effective that there are few septic cases, and that the health of the hospital staff is good.

(d) Apart from these special points, a consideration of a general nature that bears upon the subject is the number of beds involved in any instance that is being examined. Thus a group of two beds reserved for a special purpose and another group of twenty beds may both show a ratio of vacancy of 50 per cent., but the allotment of two beds to the special purpose may be more easily justified than the allotment of 20 beds.

13. The figures set out in Table V below show that the highest percentages of vacancies do occur in the classes of beds mentioned in the preceding paragraph. Excluding these classes, the other beds, which do the bulk of the work of the Hospitals, show an average percentage of vacancy of 11 per cent.

TABLE V.
BEDS VACANT BETWEEN THE DISCHARGE AND ADMISSION OF PATIENTS.

	Average daily Number of Beds Open.	Average daily Number of Beds Vacant.	Percentage of Open Beds Vacant.
			Per cent.
Medical	4,944	516	10·4
Surgical	5,402	596	11·0
Medical or Surgical	1,852	292	15·8
Maternity	816	84	10·3
Gynæcological	659	63	9·6
Accident	319	56	17·5
Isolation, Observation and Septic	542	200	36·9
Pay Beds	815	205	25·1
Staff Beds	84	45	53·0
	15,433	2,057	13·3

14. The most noteworthy figures shown in Summary B (page 36) are the high ratios of vacancy in Pay Beds as a class (25·1 per cent.) and in the group figures for the small Hospitals in Groups V and VI (24·2 per cent. and 28·5 per cent. respectively). The high ratio of vacancy in Pay Beds obtains generally throughout the Groups and at most Hospitals. This probably is not due to there being a supply of these beds in excess of the need, but rather to the fact that the facilities in this direction offered by the Hospitals are not yet sufficiently well known. There is also apt to be more time lost in making the necessary arrangements between the discharge of a private paying patient and the admission of the next. It may, however, be expected that the present rate of vacancy in these beds will diminish in the near future in view of the increasing publicity that has recently been given to the facilities provided and to the increasing necessity through the advance in modern curative methods for the middle classes to obtain treatment at a Hospital with its resources in equipment.

15. The high ratio of vacancy in Groups V and VI may be partly explained by the circumstances of the Hospitals included in these Groups. They are mainly suburban and local Hospitals, and the districts they serve are not so populated as those that surround the larger Hospitals. They are more simply equipped and are more usually concerned with the less serious type of case that does not require specialised knowledge or special treatment, so that many cases from their own districts go to other Hospitals. Another factor that affects the position is that few of these Hospitals have an Out-patient Department which, in the case of other Hospitals, plays a large part in providing In-patients, and they are therefore dependent upon the local practitioners to send their patients.

ANALYSIS OF BEDS VACANT INTO MALE, FEMALE & COTS.

(See Section C, pages 49 to 49, for particulars of each Hospital and page 50 for Group Summary.)

16. The primary division of beds is into Male, Female and Cots, and the Hospitals were asked to give this information in respect of their Medical and Surgical Beds which comprise nearly four-fifths of the total beds. Particulars of the other classes of beds were not asked for, either because the name of the class itself gave the information, e.g. Gynæcological, or because the allocation between Male and Female might, in many cases, vary according to circumstances, e.g. Accident Beds, Pay Beds.

The following table shows the figures obtained :—

TABLE VI.
NUMBER OF BEDS ALLOTTED TO MEN, WOMEN AND CHILDREN RESPECTIVELY.

Classification.	Total = 100 %	Male.	Per cent. of Total.	Female.	Per cent. of Total.	Cots.	Per cent. of Total.
Medical	4,744	1,827	38·5	1,871	39·4	1,046	22·1
Surgical	5,368	2,144	40·0	2,102	39·1	1,122	20·9
Medical or Surgical	1,782	523	29·3	689	38·7	570	32·0
Total ..	11,894	4,494	37·8	4,662	39·2	2,738	23·0
Add—							
Maternity	816	—	—	816	100·0	—	—
Gynæcological ..	659	—	—	659	100·0	—	—
Total ..	13,369	4,494	33·6	6,137	45·9	2,738	20·5

17. From the above Table it will be seen that of a total of 11,894 beds allocated to Medical and Surgical cases (apart from Gynæcological), which comprise 77 per cent. of the total beds open, the allocation as between Male and Female is approximately the same, and the number allocated to Children is less than one-fourth. Including Maternity and Gynæcological beds, the total allocated to Women is 46 per cent., as against 34 per cent. and 20 per cent. to Men and Children respectively, out of a total of 13,369 beds covering 87 per cent. of all the beds open. Making an allowance for the Female beds in the other classes (Accident, etc., for which no analysis was made), the beds reserved for Women number about 7,000, or not far short of half the total bed complement.

18. As indicated in par. 11 a low ratio of vacancy in a group of beds considered in their medical category (e.g. Surgical Beds) may conceal a high ratio of vacancy in one of the sex/age divisions through the operation of a low ratio in another of these divisions in the same medical category. An analysis showing the incidence of vacancy in the Beds for Men, for Women and for Children respectively is therefore useful, and the following Table summarises the figures in respect of the Medical and Surgical beds.

To make the figures comparable, the Women's and Children's Hospitals in the Unclassified Group XIV and the Special Hospitals for Women (Group VII) and for Children (Groups VIII and IX), have been excluded.

TABLE VII.
ANALYSIS OF MEDICAL AND SURGICAL BEDS (EXCLUDING WOMEN'S AND CHILDREN'S HOSPITALS) INTO MALE, FEMALE AND COTS.

Classification.	Total.			Male.			Female.			Cots.		
	Open.	Vacant.	Per cent. Vacant.	Open.	Vacant.	Per cent. Vacant.	Open.	Vacant.	Per cent. Vacant.	Open.	Vacant.	Per cent. Vacant.
Medical ...	4,102	372	9.1	1,827	162	8.9	1,764	134	7.6	511	76	14.9
Surgical ...	4,657	495	10.6	2,144	214	10.0	1,840	203	11.0	673	78	11.6
Med. or Surg.	1,421	248	17.4	523	88	16.9	650	90	13.8	248	70	27.9
Total ...	10,180	1,115	11.0	4,494	464	10.3	4,254	427	10.0	1,432	224	15.6

19. The above Table shows the most striking features of the analysis in Section C, namely (a) the prevalence of a high ratio of vacancy in Cots, which is possibly due to the more frequent occurrence of infection in Children's cases entailing the closing of beds to further admissions during the infective period, and (b) the low ratio of vacancy in the Male and in the Female beds that obtains generally in the larger Hospitals. Most of the Hospitals in the first three groups, which comprise all the larger General Hospitals, have a vacancy ratio for these beds of under 10 per cent. and a considerable number of them are under 6 per cent., as is shown in the following Table.

TABLE VIII.

NUMBER OF LARGER GENERAL HOSPITALS SHOWING VACANCY RATIOS UNDER AND OVER 10% IN MALE AND IN FEMALE BEDS RESERVED FOR MEDICAL AND FOR SURGICAL CASES.

Vacancy Ratio.	Medical.								Surgical.							
	Male Beds.				Female Beds.				Male Beds.				Female Beds.			
	Group.			Total	Group.			Total	Group.			Total	Group.			Total
	I	II	III		I	II	III		I	II	III		I	II	III	
	12 Hosps.	8 Hosps.	13 Hosps.	33 Hosps.	12 Hosps.	8 Hosps.	13 Hosps.	33 Hosps.	12 Hosps.	8 Hosps.	13 Hosps.	33 Hosps.	12 Hosps.	8 Hosps.	13 Hosps.	33 Hosps.
	Number of Hospitals.								Number of Hospitals.							
Over 10% ...	3	4	6	13	2	2	5	9	6	2	7	15	4	2	6	12
Under 10% ...	9	4	7	20	10	6	8	24	6	6	6	18	8	6	7	21
Under 8% ...	8	3	6	17	9	3	7	19	6	5	4	15	4	5	4	13
Under 6% ...	7	1	5	13	4	1	7	12	5	4	4	13	1	4	3	8

20. The following Table shows the figures for Children's Hospitals (Groups VIII and IX) compared with the figures for Cots in other Hospitals and in Group I alone.

TABLE IX.

VACANCIES IN CHILDREN'S HOSPITALS COMPARED WITH VACANCIES IN COTS IN OTHER HOSPITALS.

Classification.	Open.	Vacant.	Per cent. Vacant.
MEDICAL—			
Children's Hospitals (Group VIII)	399	48	12.2
Cots in Other Hospitals	511	76	14.9
„ Group I alone	230	33	14.3
SURGICAL—			
Children's Hospitals (Group VIII)	386	52	13.4
Cots in Other Hospitals	673	78	11.6
„ Group I alone	178	36	20.4
MEDICAL OR SURGICAL—			
Children's Hospitals (Group IX, Long period)	181	14	7.9
Cots in Other Hospitals	248	70	27.9

21. For the reasons given in par. 12, the beds to which attention may most usefully be directed, are those reserved respectively for Medical, for Surgical, and for Medical or Surgical cases. The following Table contains the principal differences in vacancy ratio, having regard to the number of beds involved in each instance, revealed by an examination

of the percentages of vacancies shown in the Summary of Section B in conjunction with the further analysis shown in the Summary of Section C.

TABLE X.
INCIDENCE OF VACANCY IN MALE BEDS, FEMALE BEDS AND COTS RESPECTIVELY
FOR VARIOUS GROUPS.

Group.	Percentage of all Beds in each class Vacant.	Percentage of Male Beds Vacant.	Percentage of Female Beds Vacant.	Percentage of Cots Vacant.
MEDICAL BEDS.				
Average for all Hospitals ..	Per cent. 10.4	Per cent. 8.9	Per cent. 7.7	Per cent. 12.8
II	13.5	17.2	8.8	13.7
III	10.7	9.3	7.6	19.1
SURGICAL BEDS.				
Average for all Hospitals ..	Per cent. 11.0	Per cent. 10.0	Per cent. 11.5	Per cent. 12.2
I	10.9	9.2	10.9	20.4
II	8.1	7.3	6.2	14.5
III	10.5	9.5	9.2	16.1
MEDICAL OR SURGICAL BEDS.				
Average for all Hospitals ..	Per cent. 15.8	Per cent. 16.9	Per cent. 14.1	Per cent. 16.5
III	15.0	11.2	14.1	18.3
IV	15.6	13.4	14.0	20.8
V	22.7	22.8	16.3	40.2
VI	28.7	34.4	23.4	29.3

22. The point mentioned in paragraphs 11 and 18 that a high ratio of vacancy in a particular group of beds may lie hidden in the figures of a larger group is brought out in several instances in the above Table, e.g. the percentage of vacancy for Surgical beds for Group I is below the general average but its percentage of vacancy in Cots, which is 20.4 per cent., is much higher than the general average of 12.2 per cent.

CONCLUSION.

23. In considering the question of occupation it is to be remembered that a Hospital has the daily problem of keeping its beds as fully occupied as possible, and at the same time keeping beds available for emergencies, both medical and surgical. The day-to-day reconciliation between these two conflicting demands is the difficulty that most Hospitals have to face. The Report shows that the larger and the Special Hospitals do work up to approximately 90 per cent. of their capacity in those beds over which any effective control can be exercised.

24. The causes leading to vacant beds may be divided into three categories according as the loss is attributable chiefly to

- (a) *the Hospital* : The main cause in the more highly organised Hospitals is to be found in the apportionment of beds for special classes of cases for which the demand is variable without a definite system of admission of other cases to these beds as circumstances may demand, when such admission is practicable.

In some cases the vacancies may be caused by the postponement of a patient's admission to suit the time-table of a surgeon.

In other cases the vacancy may be due to failure on the part of the Hospital to control as far as possible the loss of bed-days due to causes originating with the patients.

- (b) *the Patients* : Failure to accept or delay in accepting admission when notified of a vacancy. Linked up with this is disinclination on the part of many patients to be in Hospital during holiday periods.

- (c) *Fluctuation in Demand* : Vacancies may be due to the necessity of providing beds for which a variable demand may exist and which cannot be allocated to other purposes, either on account of the nature of the case, e.g. beds in a Fever Hospital, or because the demand is only known from day to day as it emerges, e.g. the daily provision of beds for accidents. These are examples of different aspects of the same factor, namely, the varying demand for hospital treatment at different times.

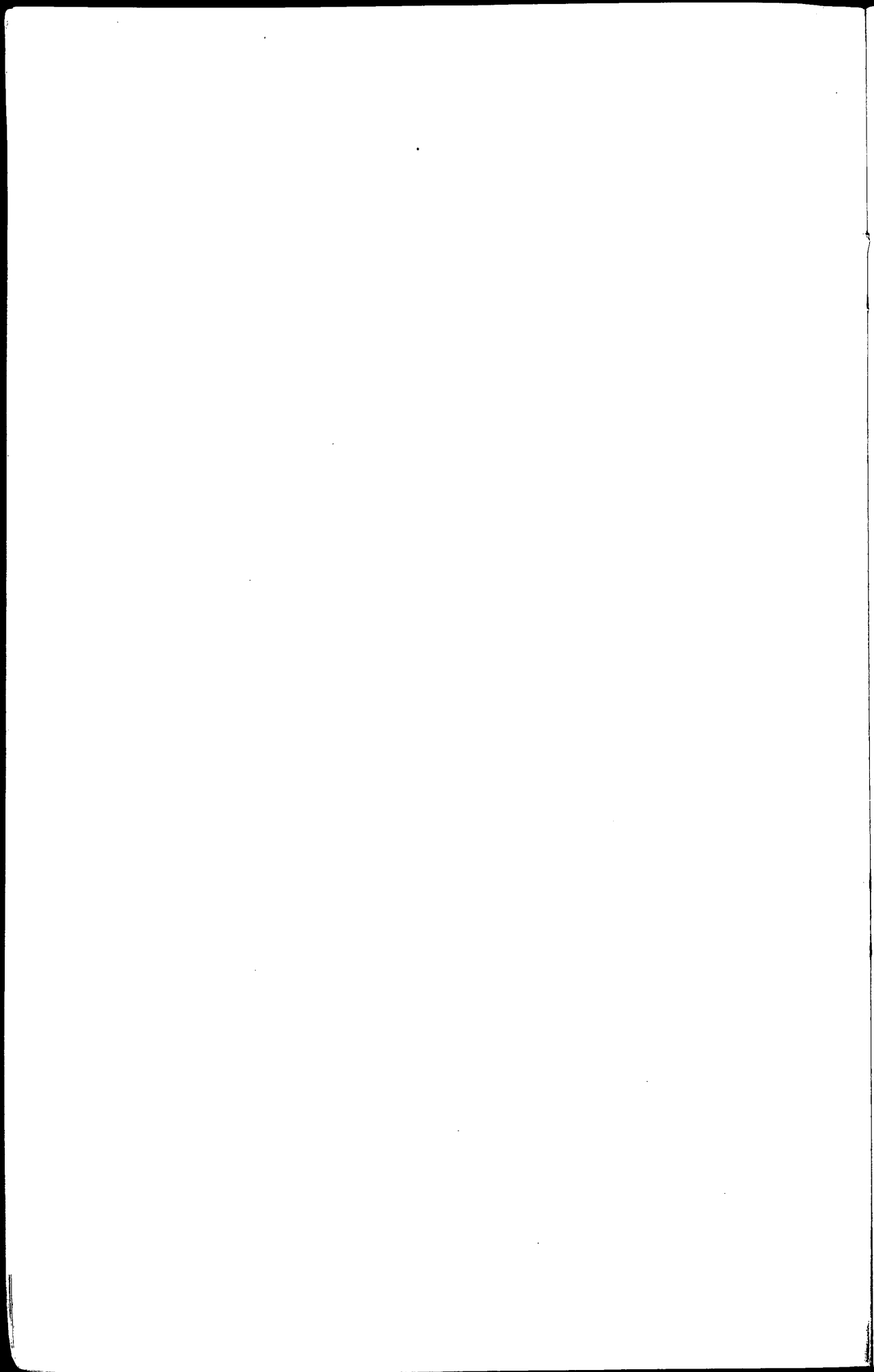
25. As any improvement in the percentage of beds occupied would in effect be as valuable as the building of additional bed accommodation, it is hoped that, by making the analysed figures of all the Hospitals obtained through this enquiry available for each Hospital and by directing the attention of the Hospitals to the remarks contained in this Prefatory Note and especially to the causes of vacancy noted in the preceding paragraph (24), the average number of beds occupied may be increased.

Section A (pages 13 to 21) contains an analysis of the 519 beds shown in Table II on page 6 as closed temporarily (viz., 166 from causes not normally recurring and 353 from causes normally recurring), and gives particulars for each Hospital and for each Group of Hospitals.

Section B (pages 23 to 37) contains an analysis of the 2,057 beds shown in the same table as vacant between the discharge and admission of patients, and gives particulars for each Hospital and for each Group of Hospitals.

Section C (pages 39 to 51) contains an analysis into Male Beds, Female Beds and Cots of the vacancies in the Medical, Surgical and Medical or Surgical Beds included in the total 2,057 vacant beds detailed in Section B and gives particulars for each Hospital and for each Group of Hospitals.

The Appendix (pages 53 to 55) contains notes, relative to some of these figures, based on information supplied by the Hospitals concerned.



SECTION A.

BEDS TEMPORARILY CLOSED

- NOTES : (a) In the column headed "Infection" closure does not necessarily mean that cases of infection actually occurred ; the closure may be for disinfection as a preventive of infection.
- (b) Figures are stated at the nearest decimal, whilst percentages are calculated on the exact figures.

SECTION A.

BEDS TEMPORARILY CLOSED.

GROUP I.

General Hospitals with Medical Schools.

Percentage of Open Beds Vacant (see Section B, Col. 29).	HOSPITALS.	Average Complement of Beds.	Average Number of Beds Closed.							Percentage of Average Complement closed from causes normally recurring. (Cols. 6-10).
			From causes not normally recurring.		From causes normally recurring.					
			Building or Reconstruction.	Other causes.	Repairs, Redecoration, or Cleaning.	Infection.	Holidays for Nursing Staff.	Combinations of Cols. 6-8 and other causes.	From all causes normally recurring.	
1	2	3	4	5	6	7	8	9	10	11
%										%
9.7	Charing Cross	257	—	—	—	—	—	—	—	—
14.3	Guy's	646	—	—	—	0.3	—	—	0.3	0.1
10.1	King's College	384	—	3.2 (a)	—	2.8	—	—	2.8	0.7
18.3	London	839	—	—	8.1	0.9	—	—	9.0	1.1
8.9	Middlesex	370	48.5	—	—	1.9	—	—	1.9	0.5
8.7	Royal Free §	268	1.4	—	11.5	0.3	—	—	11.8	4.4
14.0	St. Bartholomew's § ...	693	—	—	35.1	2.6	—	—	37.7	5.4
11.2	St. George's	337	—	—	6.1	—	—	—	6.1	1.8
7.8	St. Mary's §	351	14.0	—	9.9	0.1	—	—	10.0	2.8
9.0	St. Thomas's	593	—	—	11.6	0.9	—	—	12.5	2.1
8.6	University College § ...	530	6.9	—	20.2	1.8	—	—	22.0	4.2
3.3	Westminster	246	—	—	0.8	0.8	—	—	1.6	0.7
11.6	Totals and Group Averages	5,514	70.8	3.2	103.3	12.4	—	—	115.7	2.1

(a) Difficulty of providing Nursing Staff.

GROUP II.

General Hospitals without Medical Schools having a complement of 150 beds or over.

Percentage of Open Beds Vacant (see Section B, Col. 29).	HOSPITALS.	Average Complement of Beds.	Average Number of Beds Closed.							Percentage of Average Complement closed from causes normally recurring (Cols. 6-10).
			From causes not normally recurring.		From causes normally recurring.					
			Building or Reconstruction.	Other causes.	Repairs, Redecoration, or Cleaning.	Infection.	Holidays for Nursing Staff.	Combinations of Cols. 6-8 and other causes.	From all causes normally recurring.	
1	2	3	4	5	6	7	8	9	10	11
%										%
8.5	German	160	—	—	11.0	—	—	—	11.0	6.9
17.4	London Homœopathic §	171	—	—	—	5.4	—	—	5.4	3.1
8.0	Miller	151	—	—	1.8	—	—	—	1.8	1.2
10.9	Prince of Wales's ...	201	—	—	5.8	0.6	—	—	6.4	3.2
10.8	Queen Mary's	213	—	—	—	—	—	—	—	—
7.4	Royal Northern § ...	310	—	—	5.1	5.6	—	—	10.7	3.5
20.9	Seamen's (Dreadnought)	250	—	—	—	—	—	—	—	—
8.6	West London	225	—	—	2.2	0.3	—	—	2.5	1.1
11.6	Totals and Group Averages	1,681	—	—	25.9	11.9	—	—	37.8	2.3

§ See notes on pages 53 to 55.

BEDS TEMPORARILY CLOSED.

SECTION A.

GROUP III.

General Hospitals having a complement of 70 to 149 Beds.

Percentage of Open Beds Vacant (see Section B, Col. 32).	HOSPITALS.	Average Complement of Beds.	Average Number of Beds Closed.							Percentage of Average Complement closed from causes normally recurring. (Cols. 6-10).
			From causes not normally recurring.		From causes normally recurring.					
			Building or Reconstruction.	Other causes.	Repairs, Redecoration, or Cleaning.	Infection.	Holidays for Nursing Staff.	Combinations of Cols. 6-8 and other causes.	From all causes normally recurring.	
1	2	3	4	5	6	7	8	9	10	11
%										%
9.1	Bolingbroke	121	—	—	12.7	1.4	—	—	14.1	11.7
12.7	Connaught	100	—	—	—	—	—	—	—	—
8.4	Croydon	130	—	—	3.7	5.7	—	—	9.4	7.2
19.2	East Ham	73	—	—	—	0.4	—	—	0.4	0.5
23.3	French	70	—	—	—	—	—	—	—	—
14.6	Hampstead	131	7.2	—	1.0	2.6	—	—	3.6	2.8
16.6	Hospital of St. John and Elizabeth §	134	—	—	—	—	—	18.6 (a)	18.6	13.9
13.8	King Edward Memorial (Ealing)	106	—	—	—	0.3	—	—	0.3	0.3
11.2	London Jewish	108	—	0.9 (b)	2.7	0.5	—	—	3.2	3.0
12.8	London Temperance ...	136	—	—	2.1	2.9	—	—	5.0	3.7
11.5	Metropolitan	137	—	—	3.2	0.8	—	—	4.0	2.9
20.5	Poplar	118	—	—	2.8	0.1	—	—	2.9	2.5
14.4	Royal (Richmond) ...	88	—	—	—	—	—	—	—	—
14.5	St. John's (Lewisham) §	102	—	—	—	3.5	—	0.5 (c)	4.0	4.0
14.2	Willesden	106	—	—	—	0.5	—	—	0.5	0.5
23.7	Wimbledon	71	1.3	—	—	0.6	—	—	0.6	0.8
10.3	Woolwich War Memorial	112	—	—	—	1.2	—	—	1.2	1.0
14.2	Totals and Group Averages	1,843	8.5	0.9	28.2	20.5	—	19.1	67.8	3.7

(a) Cleaning and Infection.

(b) Laying rubber floors.

(c) A hut with one Bed is used only in Summer.

GROUP IV.

General Hospitals having a complement under 70 Beds with a Resident Medical Officer.

Percentage of Open Beds Vacant (see Section B, Col. 20).	HOSPITALS.	Average Complement of Beds.	Average Number of Beds Closed.							Percentage of Average Complement closed from causes normally recurring (Cols. 6-10).
			From causes not normally recurring.		From causes normally recurring.					
			Building or Reconstruction.	Other causes.	Repairs, Redecoration, or Cleaning.	Infection.	Holidays for Nursing Staff.	Combinations of Cols. 6-8 and other causes.	From all causes normally recurring.	
1	2	3	4	5	6	7	8	9	10	11
%										%
13·4	Acton	54	2·6	—	—	—	—	—	—	—
31·6	Italian	57	—	—	—	—	—	—	—	—
(a)	Kensington, Fulham and Chelsea	19	19·0	—	—	—	—	—	—	—
14·3	King George, Ilford ...	64	—	—	—	0·2	—	—	0·2	0·4
15·3	Mildmay Mission	56	—	—	1·8	1·3	—	—	3·1	5·6
25·3	Nelson	62	—	—	—	0·5	—	—	0·5	0·9
15·1	Seamen's (Docks)	53	—	—	—	—	—	—	—	—
18·1	Weir	30	—	—	—	(0·04)	—	—	(0·04)	0·1
19·4	Totals and Group Averages	395	21·6	—	1·8	2·0	—	—	3·8	1·0

(a) All Beds closed for re-building.

§ See notes on pages 53 to 55.

SECTION A.

BEDS TEMPORARILY CLOSED.

GROUP V.

General and Cottage Hospitals having a complement of 30 Beds or over, without a Resident Medical Officer.

Percentage of Open Beds Vacant (see Section B, Col. 29).	HOSPITALS.	Average Complement of Beds.	Average Number of Beds Closed.							Percentage of Average Complement closed from causes normally recurring (Cols. 6-10).
			From causes not normally recurring.		From causes normally recurring.					
			Building or Reconstruction.	Other causes.	Repairs, Redecoration, or Cleaning.	Infection.	Holidays for Nursing Staff.	Combinations of Cols. 6-8 and other causes.	From all causes normally recurring.	
1	2	3	4	5	6	7	8	9	10	11
19.5	Beckenham	45	—	—	—	—	—	—	—	%
23.0	Blackheath and Charlton	30	—	—	—	2.0	—	—	2.0	6.7
38.2	Bromley	42	—	—	—	—	—	—	—	—
17.8	Carshalton	30	—	—	—	—	—	—	—	—
18.0	Enfield	53	—	—	0.1	0.1	—	—	0.2	0.3
13.6	Finchley	55	—	—	0.1	0.2	—	—	0.3	0.5
31.9	Forest	32	3.1	—	—	—	—	—	—	—
13.1	Harrow	40	—	—	—	—	—	—	—	—
23.5	Hendon	50	—	—	—	—	—	—	—	—
26.0	Hornsey	48	—	—	—	—	—	—	—	—
37.0	Mildmay Memorial ...	42	—	—	0.5	—	—	—	0.5	1.2
29.5	Norwood	32	—	—	—	0.3	—	—	0.3	0.9
21.9	Passmore Edwards (Wood Green)	52	—	—	—	—	—	—	—	—
31.5	Victoria (Barnet) ...	32	—	—	1.8	—	—	—	1.8	5.5
28.7	Woodford Jubilee ...	31	—	—	—	—	—	—	—	—
24.2	Totals and Group Averages	614	3.1	—	2.5	2.6	—	—	5.1	0.8

GROUP VI.

General and Cottage Hospitals having a complement under 30 Beds without a Resident Medical Officer.

Percentage of Open Beds Vacant (see Section B, Col. 11).	HOSPITALS.	Average Complement of Beds.	Average Number of Beds Closed.							Percentage of Average Complement closed from causes normally recurring (Cols. 6-10).
			From causes not normally recurring.		From causes normally recurring.					
			Building or Reconstruction.	Other causes.	Repairs, Redecoration, or Cleaning.	Infection.	Holidays for Nursing Staff.	Combinations of Cols. 6-8 and other causes.	From all causes normally recurring.	
1	2	3	4	5	6	7	8	9	10	11
%										%
26.0	Eltham and Mottingham	26	—	—	—	—	—	—	—	—
20.6	Hanwell	16	—	—	—	—	—	—	—	—
36.1	Kingston Victoria ...	23	0.8	—	—	—	—	—	—	—
57.3	Phillips Memorial Homœopathic	18	1.7	0.6 (a)	—	—	—	—	—	—
24.5	St. John's (Twickenham)	20	—	—	1.5	—	—	—	1.5	7.3
13.9	Wembley	25	—	—	—	0.1	—	—	0.1	0.4
28.5	Totals and Group Averages	128	2.5	0.6	1.5	0.1	—	—	1.6	1.2

(a) Relaying all Corridors with Marbolith.

BEDS TEMPORARILY CLOSED.

SECTION A.

GROUP VII.

Hospitals for Women.

Percentage of Open Beds Vacant (see Section B, Col. 20).	HOSPITALS.	Average Complement of Beds.	Average Number of Beds Closed.							Percentage of Average Complement closed from causes normally recurring (Cols. 6-10).
			From causes not normally recurring.		From causes normally recurring.					
			Building or Reconstruction.	Other causes.	Repairs, Redecoration, or Cleaning.	Infection.	Holidays for Nursing Staff.	Combinations of Cols. 6-8 and other causes.	From all causes normally recurring.	
1	2	3	4	5	6	7	8	9	10	11
% 11·2	Chelsea	100	—	—	4·7	—	—	—	4·7	% 4·7
5·1	Elizabeth Garrett Anderson	96	4·5	—	—	—	—	—	—	—
12·8	Grosvenor§	37	—	—	—	—	—	3·0 (a)	3·0	8·2
9·3	Hospital for Women ...	82	—	—	0·8	—	—	—	0·8	1·0
11·9	Samaritan Free	70	—	—	4·9	—	—	—	4·9	7·0
1·6	South London	114	—	—	—	—	—	1·7 (b)	1·7	1·5
7·7	Totals and Group Averages	499	4·5	—	10·4	—	—	4·7	15·1	3·0

(a) Annual Cleaning and Holidays for Nursing Staff.

(b) Cleaning and Infection.

GROUP VIII.

Children's Hospitals.

Percentage of Open Beds Vacant (see Section B, Col. 20).	HOSPITALS.	Average Complement of Beds.	Average Number of Beds Closed.							Percentage of Average Complement closed from causes normally recurring (Cols. 6-10).
			From causes not normally recurring.		From causes normally recurring.					
			Building or Reconstruction.	Other causes.	Repairs, Redecoration, or Cleaning.	Infection.	Holidays for Nursing Staff.	Combinations of Cols. 6-8 and other causes.	From all causes normally recurring.	
1	2	3	4	5	6	7	8	9	10	11
% 10·1	Belgrave	76	—	—	0·6	1·9	—	0·8 (a)	3·3	% 4·3
33·1	East London	140	—	—	2·7	1·9	—	—	4·6	3·3
23·8	Evelina	80	—	—	0·7	1·1	—	—	1·8	2·2
10·5	Hospital for Sick Children	252	—	—	5·2	1·5	—	—	6·7	2·7
13·6	Paddington Green§ ...	42	—	—	2·8	0·7	—	—	3·5	8·3
6·5	Queen's	134	—	—	0·4	1·7	—	—	2·1	1·6
33·1	South Eastern	61	—	—	—	—	—	—	—	—
26·8	Victoria	138	1·6	3·9 (b)	2·9	1·4	—	0·2 (c)	4·5	3·2
18·5	Totals and Group Averages	923	1·6	3·9	15·3	10·2	—	1·0	26·5	2·9

(a) Ward closed during School Holidays.

(b) Illness of Nursing Staff.

(c) Tonsil and Adenoid Ward closed for Children's Christmas Holidays.

§ See notes on pages 53 to 55.

SECTION A.

BEDS TEMPORARILY CLOSED.

GROUP IX.

Children's (Long Period) Hospitals.

Percentage of Open Beds Vacant (see Section B, Col. 5)	HOSPITALS.	Average Complement of Beds.	Average Number of Beds Closed.							Percentage of Average Complement closed from causes normally recurring (Cols. 6-10).
			From causes not normally recurring.		From causes normally recurring.					
			Building or Reconstruction.	Other causes.	Repairs, Redecoration, or Cleaning.	Infection.	Holidays for Nursing Staff.	Combinations of Cols. 6-8 and other causes.	From all causes normally recurring.	
1	2	3	4	5	6	7	8	9	10	11
% 9·8	Cheyne	67	—	—	—	—	—	—	—	% —
3·8	Children's, Hampstead..	63	—	—	—	10·5	—	—	10·5	16·7
17·0	St. Monica's	26	—	—	—	(0·03)	—	—	(0·03)	0·1
5·2	Santa Claus	20	—	0·2 (a)	1·7	—	—	—	1·7	8·4
0·9	Winifred House ...	18	—	—	—	—	—	—	—	—
7·7	Totals and Group Averages	194	—	0·2	1·7	10·5	—	—	12·2	6·3

(a) Illness of Staff.

GROUP X.

Maternity Hospitals.

Percentage of Open Beds Vacant (see Section B, Col. 17).	HOSPITALS.	Average Complement of Beds.	Average Number of Beds Closed.							Percentage of Average Complement closed from causes normally recurring (Cols. 6-10).
			From causes not normally recurring.		From causes normally recurring.					
			Building or Reconstruction.	Other causes.	Repairs, Redecoration, or Cleaning.	Infection.	Holidays for Nursing Staff.	Combinations of Cols. 6-8 and other causes.	From all causes normally recurring.	
1	2	3	4	5	6	7	8	9	10	11
%										%
25.5	British, for Mothers ...	42	6.0	—	—	—	—	—	—	—
0.9	City of London§ ...	71	—	—	—	—	—	6.9 (a)	6.9	9.7
29.1	Clapham	50	—	—	—	—	—	—	—	—
12.0	East End	56	—	—	0.3	—	—	—	0.3	0.6
18.3	General	45	—	—	—	—	—	0.9 (a)	0.9	2.1
25.2	Jewish	34	—	—	0.6	—	—	—	0.6	1.8
0.9	Mothers' (Salvation Army)	90	—	—	—	—	—	2.5 (a)	2.5	2.8
1.4	Plaistow	42	—	—	—	—	—	—	—	—
2.4	Queen Charlotte's ...	80	—	—	—	—	—	—	—	—
10.3	Totals and Group Averages	510	6.0	—	0.9	—	—	10.3	11.2	2.2

(a) Cleaning and Infection.

§ See notes on pages 53 to 55.

BEDS TEMPORARILY CLOSED.

SECTION A.

GROUP XI.

Ophthalmic Hospitals.

Percentage of Open Beds Vacant (see Section B, Col. 14).	HOSPITALS.	Average Complement of Beds.	Average Number of Beds Closed.							Percentage of Average Complement closed from causes normally recurring (Cols. 6-10).
			From causes not normally recurring.		From causes normally recurring.					
			Building or Reconstruction.	Other causes.	Repairs, Redecoration, or Cleaning.	Infection.	Holidays for Nursing Staff.	Combinations of Cols. 6-8 and other causes.	From all causes normally recurring.	
1	2	3	4	5	6	7	8	9	10	11
%										%
31.9	Central London ...	40	—	—	—	—	—	—	—	—
14.3	Royal Eye ...	46	—	—	0.7	—	—	—	0.7	1.6
5.5	Royal London ...	122	11.0	—	—	0.6	—	—	0.6	0.5
22.6	Royal Westminster ...	66	—	—	—	—	—	—	—	—
3.9	Western ...	18	—	—	—	—	—	—	—	—
14.6	Totals and Group Averages	292	11.0	—	0.7	0.6	—	—	1.3	0.4

GROUP XII.

Hospitals for Disorders of the Nervous System.

Percentage of Open Beds Vacant (see Section B, Col. 17).	HOSPITALS.	Average Complement of Beds.	Average Number of Beds Closed.							Percentage of Average Complement closed from causes normally recurring (Cols. 6-10).
			From causes not normally recurring.		From causes normally recurring.					
			Building or Reconstruction.	Other causes.	Repairs, Redecoration, or Cleaning.	Infection.	Holidays for Nursing Staff.	Combinations of Cols. 6-8 and other causes.	From all causes normally recurring.	
1	2	3	4	5	6	7	8	9	10	11
%										%
2.3	Hospital for Epilepsy & Paralysis	82	—	—	—	—	—	0.3 (a)	0.3	0.3
5.7	National, Queen Square	195	—	7.2 (b)	2.8	0.8	—	—	3.6	1.9
5.2	West End	80	—	—	—	(0.02)	—	—	(0.02)	(0.03)
4.8	Totals and Group Averages	357	—	7.2	2.8	0.8	—	0.3	3.9	1.1

(a) Cleaning and Infection. (b) Difficulty of providing Nursing Staff.

GROUP XIII.

Throat, Nose and Ear Hospitals.

Percentage of Open Beds Vacant (see Section B, Col. 11).	HOSPITALS	Average Complement of Beds.	Average Number of Beds Closed.							Percentage of Average Complement closed from causes normally recurring (Cols. 6-10).
			From causes not normally recurring.		From causes normally recurring.					
			Building or Reconstruction.	Other causes.	Repairs, Redecoration, or Cleaning.	Infection.	Holidays for Nursing Staff.	Combinations of Cols. 6-8 and other causes.	From all causes normally recurring.	
1	2	3	4	5	6	7	8	9	10	11
%										%
18.6	Central London ...	59	11.0	—	—	0.3	—	—	0.3	0.5
17.5	Golden Square§ ...	96	—	—	0.6	0.6	—	—	1.2	1.2
26.6	Metropolitan§ ...	22	—	—	1.9	—	—	—	1.9	8.5
18.9	Totals and Group Averages	177	11.0	—	2.5	0.9	—	—	3.4	1.9

§ See notes on pages 53 to 55.

SECTION A.

BEDS TEMPORARILY CLOSED.

GROUP XIV.

Unclassified Special Hospitals (not comparable).

Percentage of Open Beds Vacant (see Section B, Col. 32).	HOSPITALS.	Average Complement of Beds.	Average Number of Beds Closed.							Percentage of Average Complement closed from causes normally recurring (Cols. 6-10).
			From causes not normally recurring.		From causes normally recurring.					
			Building or Reconstruction.	Other causes.	Repairs, Redecoration, or Cleaning.	Infection.	Holidays for Nursing Staff.	Combinations of Cols. 6-8 and other causes.	From all causes normally recurring.	
1	2	3	4	5	6	7	8	9	10	11
%										%
16·1	All Saints' (Gen.-Ur.) ...	30	—	—	—	—	—	0·1 (a)	0·1	0·2
8·9	City of London (Heart and Lungs)§	184	—	—	1·9	0·4	—	4·3	6·6	3·6
18·4	Florence Nightingale (Gentlewomen)§	38	—	—	3·7	0·3	—	—	4·0	10·5
9·9	Gordon (Fistula, etc.) ...	34	—	—	0·4	—	—	—	0·4	1·0
5·2	Hospital for Consumption (Brompton)	333	—	—	2·6	—	—	—	2·6	0·8
3·9	„ (Frimley)	150	—	—	0·8	—	—	—	0·8	0·5
2·9	Hostel of St. Luke (Clergy)	30	—	1·2 (b)	—	—	—	—	—	—
6·9	Infants ...	50	—	—	0·4	2·5	—	—	2·9	5·8
30·8	Invalid and Crippled Children's§	28	—	5·8 (c)	0·9	—	0·2	—	1·1	4·0
6·6	Inv. Chd. Aid Assn. (Heart Hospital)	83	—	—	1·6	2·3	—	—	3·9	4·6
38·7	London Fever ...	200	—	—	—	—	—	—	—	—
29·5	London Lock (Female)...	161	—	—	—	0·7	—	—	0·7	0·4
35·4	„ „ (Male) ...	38	—	—	—	—	—	—	—	—
10·2	Middlesex Cancer ...	90	—	—	—	0·5	—	—	0·5	0·6
48·3	Mount Vernon (Cancer)	150	—	—	—	—	—	—	—	—
4·0	National Heart ...	46	—	—	—	—	—	—	—	—
8·6	Princess Louise, Kensington (Children)	42	—	—	0·5	1·3	—	—	1·8	4·4
4·1	Royal National Orthopaedic (Stanmore)	170	—	—	1·2	4·1	—	—	5·3	3·1
0·2	„ „ (Stanmore)	230	—	—	—	0·6	—	—	0·6	0·2
16·2	Royal Waterloo (Children and Women)	127	—	—	1·7	1·6	—	—	3·3	2·7
0·3	St. Andrew's Dollis Hill (Middle Classes)	56	—	—	—	—	—	—	—	—
27·7	St. Columba's (Advanced Cases)	50	—	—	—	—	—	—	—	—
17·0	St. John's (Skin)§ ...	33	—	—	—	—	—	2·9 (d)	2·9	8·8
9·3	St. Luke's (Advanced Cases)	48	—	—	2·7	—	—	—	2·7	5·6
8·0	St. Mark's (Fistula, etc.)	72	—	—	2·1	—	—	—	2·1	2·9
3·5	St. Mary's, Plaistow (Women and Children)	66	—	—	1·8	0·9	—	—	2·7	4·1
0·6	St. Nicholas (Country Branch of Cheyne: Children—long period)	33	—	—	—	—	—	—	—	—
16·4	St. Paul's (Gen.-Ur.) ...	33	—	—	—	—	—	—	—	—
3·6	St. Peter's (Stone) ...	32	2·9	—	—	—	—	—	—	—
29·2	St. Saviour's (Gentlewomen)	21	—	—	—	—	—	0·1 (d)	0·1	0·3
21·0	Seamen's (Tropical Diseases)	56	—	—	—	—	—	—	—	—
9·2	„ (Sanatorium, Liphook)	80	—	—	—	—	—	—	—	—
30·5	Stoke Newington (Women)	31	—	—	2·4	—	—	—	2·4	7·7
14·2	Totals and Group Averages	2,825	2·9	7·0	24·7	15·2	0·2	7·4	47·5	1·7

(a) Infection and Cleaning. (b) Illness of Staff and temporary use of Ward for other purposes. (c) Change over from Orthopaedic Cases to Babies under five. (d) Cleaning and Holidays for Nursing Staff.

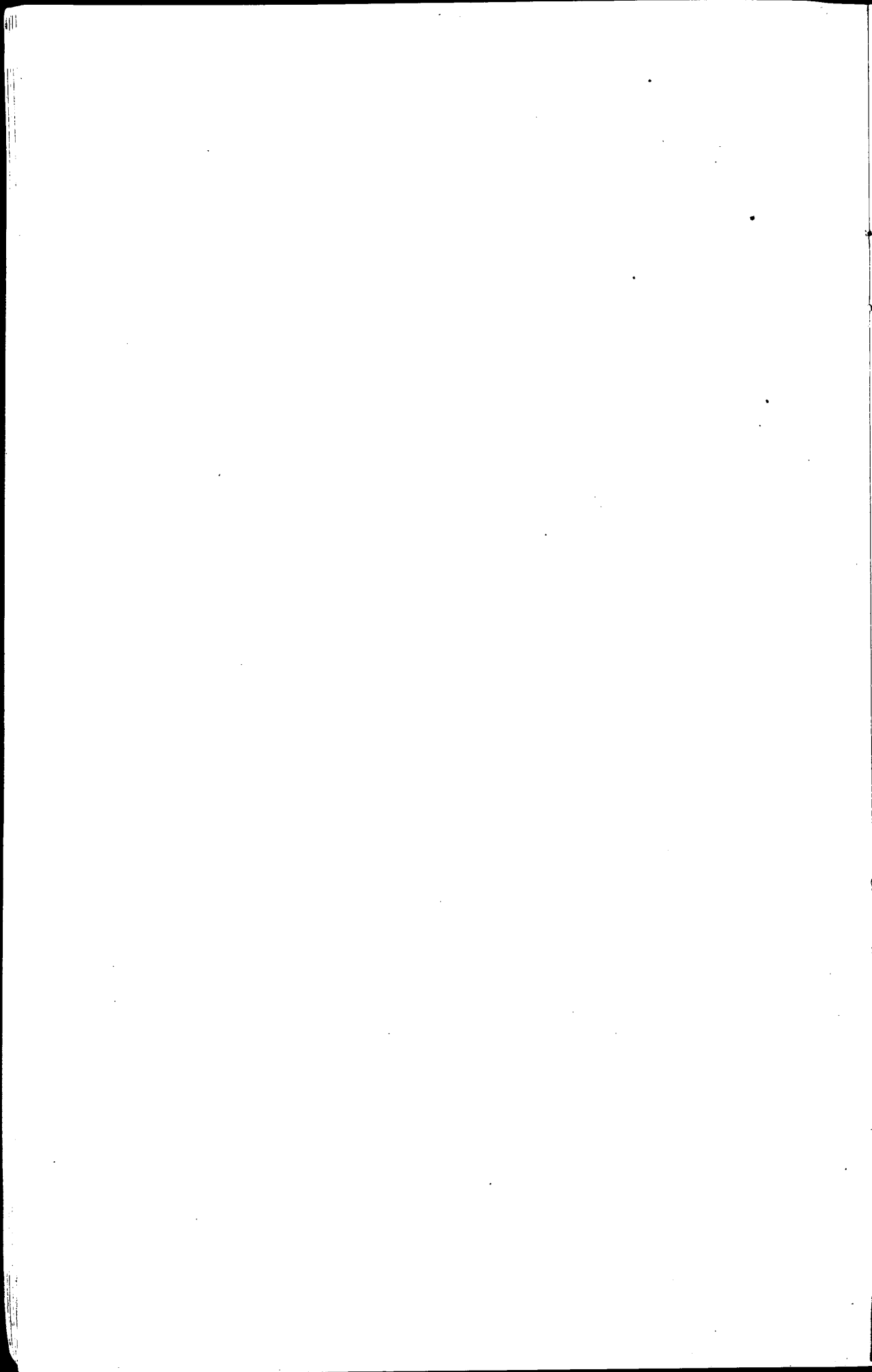
BEDS TEMPORARILY CLOSED.

SECTION A.

SUMMARY OF ALL GROUPS.

Percentage of Open Beds Vacant (see Section B, Col. 32).	GROUPS.	Average Complement of Beds.	Average Number of Beds Closed.							Percentage of Average Complement closed from causes normally recurring (Cols. 6-10).
			From causes not normally recurring.		From causes normally recurring.					
			Rebuilding or Reconstruction.	Other causes. *	Repairs, Redecoration, or Cleaning.	Infection.	Holidays for Nursing Staff.	Combinations of Cols. 6-8 and other causes. *	From all causes normally recurring.	
1	2	3	4	5	6	7	8	9	10	11
%										%
11.6	I. General Hospitals with Medical Schools	5,514	70.8	3.2	103.3	12.4	—	—	115.7	2.1
11.6	II. General Hospitals without Medical Schools having a complement 150 beds or over	1,681	—	—	25.9	11.9	—	—	37.8	2.3
14.2	III. General Hospitals having a complement 70 to 149 beds	1,843	8.5	0.9	28.2	20.5	—	19.1	67.8	3.7
19.4	IV. General Hospitals having a complement under 70 beds with a Resident Medical Officer	395	21.6	—	1.8	2.0	—	—	3.8	1.0
24.2	V. General and Cottage Hospitals having a complement 30 beds or over without a Resident Medical Officer...	614	3.1	—	2.5	2.6	—	—	5.1	0.8
28.5	VI. General and Cottage Hospitals having a complement under 30 beds without a Resident Medical Officer...	128	2.5	0.6	1.5	0.1	—	—	1.6	1.2
7.7	VII. Hospitals for Women ...	499	4.5	—	10.4	—	—	4.7	15.1	3.0
18.5	VIII. Children's Hospitals ...	923	1.6	3.9	15.3	10.2	—	1.0	26.5	2.9
7.7	IX. Children's (Long period) Hospitals	194	—	0.2	1.7	10.5	—	—	12.2	6.3
10.3	X. Maternity Hospitals ...	510	6.0	—	0.9	—	—	10.3	11.2	2.2
14.6	XI. Ophthalmic Hospitals ...	292	11.0	—	0.7	0.6	—	—	1.3	0.4
4.8	XII. Hospitals for Disorders of the Nervous System ...	357	—	7.2	2.8	0.8	—	0.3	3.9	1.1
18.9	XIII. Throat, Nose and Ear Hospitals	177	11.0	—	2.5	0.9	—	—	3.4	1.9
14.2	XIV. Unclassified Special Hospitals (not comparable)	2,825	2.9	7.0	24.7	15.2	0.2	7.4	47.5	1.7
13.3	Totals and Averages for all Hospitals	15,952	143.5	23.0	222.2	87.7	0.2	42.8	352.9	2.2

* For details see Group Tables.



SECTION B.

BEDS VACANT BETWEEN THE DISCHARGE AND ADMISSION OF PATIENTS

- NOTES : (a) In many instances there are no separate statistics for one or more of the various categories into which Beds have been classified, for the reason that no bed is reserved exclusively for the particular class of case, and the relative figures form part of those of some other heading (e.g., Accident with Surgical) or are shown under a composite heading (e.g., Medical or Surgical). Where, therefore, blanks are shown in any of the columns it does not necessarily mean that such cases are not treated at the Hospital.
- (b) Figures are stated at the nearest decimal, whilst percentages are calculated on the exact figures.

SECTION B.

BEDS VACANT BETWEEN THE DISCHARGE

GROUP I.—General Hospitals

Percentage of Average Complement closed from causes normally recurring (See Section A, Col. 11).	HOSPITALS.	Medical.			Surgical.			Maternity.			Gynaecological.		
		Average Number of Beds.		Percentage of Open Beds Vacant.	Average Number of Beds.		Percentage of Open Beds Vacant.	Average Number of Beds.		Percentage of Open Beds Vacant.	Average Number of Beds.		Percentage of Open Beds Vacant.
		Open.	Vacant.		Open.	Vacant.		Open.	Vacant.		Open.	Vacant.	
1	2	3	4	5	6	7	8	9	10	11	12	13	14
%				%			%			%			%
—	Charing Cross ...	117·0	8·0	6·8	93·0	10·0	10·8	19·0	2·0	10·5	22·0	1·0	4·6
0·1	Guy's ...	212·0	30·2	14·3	238·0	27·5	11·6	21·0	0·9	4·6	26·0	0·2	1·0
0·7	King's College ...	107·0	8·0	7·5	136·0	13·0	9·6	24·0	1·0	4·2	16·0	0·0	0·0
1·1	London§ ...	303·0	37·0	12·2	386·0	63·0	16·3	21·0	0·0	0·0	28·0	2·0	7·1
0·5	Middlesex ...	118·2	8·2	7·0	161·3	11·1	6·9	10·0	0·9	9·1	17·0	2·6	15·2
4·4	Royal Free ...	75·6	2·6	3·4	85·6	10·6	13·4	39·8	2·9	7·3	31·8	2·1	6·5
5·4	St. Bartholomew's ...	220·0	15·4	7·0	238·1	43·3	18·2	15·8	2·0	12·4	38·5	4·3	11·1
1·8	St. George's ...	102·9	9·2	9·0	149·3	16·6	11·1	10·7	1·3	12·0	15·0	1·6	10·5
2·8	St. Mary's ...	134·5	10·5	7·8	157·4	10·4	6·6	9·6	0·7	6·9	12·8	0·7	5·9
2·1	St. Thomas's ...	192·7	13·3	6·9	217·7	13·5	6·2	20·6	1·9	9·4	29·4	1·8	6·0
4·2	University College§ ...	200·5	10·7	5·3	199·9	14·6	7·3	45·0	4·9	10·9	30·0	1·7	5·7
0·7	Westminster ...	84·4	1·9	2·2	106·0	2·0	1·9	12·0	0·0	0·0	10·0	0·0	0·0
2·1	Totals and Group Averages	1,867·8	155·0	8·3	2,168·3	235·6	10·9	248·5	18·5	7·5	276·5	18·0	6·5

GROUP II.—General Hospitals without Medical

Percentage of Average Complement closed from causes normally recurring (See Section A, Col. 11).	HOSPITALS.	Medical.			Surgical.			Maternity.			Gynaecological.		
		Average Number of Beds.		Percentage of Open Beds Vacant.	Average Number of Beds.		Percentage of Open Beds Vacant.	Average Number of Beds.		Percentage of Open Beds Vacant.	Average Number of Beds.		Percentage of Open Beds Vacant.
		Open.	Vacant.		Open.	Vacant.		Open.	Vacant.		Open.	Vacant.	
1	2	3	4	5	6	7	8	9	10	11	12	13	14
%				%			%			%			%
6·9	German ...	63·0	4·6	7·3	62·0	5·0	8·1	—	—	—	—	—	—
3·1	London Homœopathic ...	79·2	11·2	14·2	48·9	8·9	18·2	—	—	—	18·5	4·5	24·4
1·2	Miller ...	51·4	2·9	5·7	65·4	3·3	5·0	—	—	—	15·4	0·1	0·3
3·2	Prince of Wales ...	71·2	8·1	11·4	98·4	8·7	8·9	—	—	—	12·0	0·8	7·1
—	Queen Mary's... ...	69·1	4·0	5·8	64·0	4·7	7·4	46·1	10·5	22·7	2·0	0·0	0·0
3·5	Royal Northern ...	142·5	17·2	12·1	81·8	1·5	1·8	12·0	0·5	4·2	10·0	0·4	4·0
—	Seamen's (Dreadnought)	128·0	37·0	28·9	102·0	12·0	11·8	—	—	—	—	—	—
1·1	West London ...	62·3	4·9	7·9	96·3	6·0	6·2	—	—	—	7·0	0·5	7·3
2·3	Totals and Group Averages	666·7	89·9	13·5	618·8	50·1	8·1	58·1	11·0	18·9	64·9	6·3	9·8

§ See notes on pages 53 to 55.

AND ADMISSION OF PATIENTS.

SECTION B.

with Medical Schools.

Accident.			Isolation, Observation and Septic.			Pay Beds.			Staff Beds.			Total All Classes.			HOSPITALS.
Average Number of Beds.		Percentage of Open Beds Vacant.	Average Number of Beds.		Percentage of Open Beds Vacant.	Average Number of Beds.		Percentage of Open Beds Vacant.	Average Number of Beds.		Percentage of Open Beds Vacant.	Average Number of Beds.		Percentage of Open Beds Vacant.	
Open.	Vacant.		Open.	Vacant.		Open.	Vacant.		Open.	Vacant.		Open.	Vacant.		
15	16	17	18	19	20	21	22	23	24	25	26	27	28	29	
4.0	3.0	75.0	—	—	—	—	—	—	2.0	1.0	50.0	257.0	25.0	9.7	Charing Cross
65.7	13.0	19.7	46.0	15.0	32.6	31.0	4.5	14.5	6.0	1.0	16.3	645.7	92.3	14.3	Guy's
16.0	1.0	6.3	12.0	4.0	33.3	64.0	11.0	17.2	3.0	0.0	0.0	378.0	38.0	10.1	King's College
—	—	—	70.0	33.0	47.1	—	—	—	22.0	17.0	77.3	830.0	152.0	18.3	London
—	—	—	11.0	5.1	46.2	2.3	0.6	26.6	—	—	—	319.8	28.5	8.9	Middlesex
7.0	1.0	14.3	7.0	2.3	32.9	8.0	0.5	6.3	—	—	—	254.8	22.0	8.7	Royal Free
—	—	—	126.9	16.4	12.9	—	—	—	15.8	9.9	63.2	655.1	91.3	14.0	St. Bartholomew's
38.0	3.9	10.2	9.0	1.0	11.3	—	—	—	6.0	3.6	60.2	330.9	37.2	11.2	St. George's
12.7	2.7	21.4	—	—	—	—	—	—	—	—	—	327.0	25.0	7.8	St. Mary's
19.6	1.4	7.5	92.5	19.2	20.8	—	—	—	8.0	1.0	12.0	580.5	52.1	9.0	St. Thomas's
6.0	4.6	76.7	7.0	1.3	18.6	7.5	3.4	45.3	5.0	2.1	42.0	500.9	43.3	8.6	University College
11.0	3.0	27.3	7.0	0.0	0.0	14.0	1.0	7.1	—	—	—	244.4	7.9	3.3	Westminster
180.0	33.6	18.7	388.4	97.3	25.0	126.8	21.0	16.6	67.8	35.6	52.6	5,324.1	614.6	11.6	Totals and Group Averages

Schools having a complement of 150 beds or over.

Accident.			Isolation, Observation and Septic.			Pay Beds.			Staff Beds.			Total All Classes.			HOSPITALS.
Average Number of Beds.		Percentage of Open Beds Vacant.	Average Number of Beds.		Percentage of Open Beds Vacant.	Average Number of Beds.		Percentage of Open Beds Vacant.	Average Number of Beds.		Percentage of Open Beds Vacant.	Average Number of Beds.		Percentage of Open Beds Vacant.	
Open.	Vacant.		Open.	Vacant.		Open.	Vacant.		Open.	Vacant.		Open.	Vacant.		
15	16	17	18	19	20	21	22	23	24	25	26	27	28	29	
12.0	1.0	% 8.3	2.0	0.0	% 0.0	10.0	2.0	20.0	—	—	—	149.0	12.6	% 8.5	German
—	—	—	—	—	—	19.0	4.0	21.1	—	—	—	165.6	28.6	17.4	London Homœopathic
10.0	3.8	37.9	—	—	—	7.0	1.8	25.9	—	—	—	149.2	11.9	8.0	Miller
10.0	3.6	35.8	—	—	—	—	—	—	3.0	0.0	0.0	194.6	21.2	10.9	Prince of Wales
24.0	(0.03)	0.1	2.0	1.3	65.0	6.0	2.4	40.0	—	—	—	213.2	22.9	10.8	Queen Mary's
15.9	1.2	7.6	—	—	—	37.1	1.5	4.0	—	—	—	299.3	22.3	7.4	Royal Northern
—	—	—	—	—	—	20.0	3.0	15.0	—	—	—	250.0	52.0	20.9	Seamen's (Dreadnought)
32.0	4.0	12.5	—	—	—	25.0	4.0	16.0	—	—	—	222.6	19.4	8.6	West London
103.9	13.6	13.1	4.0	1.3	32.5	124.1	18.7	15.1	3.0	0.0	0.0	1,643.5	190.9	11.6	Totals and Group Averages

SECTION B.

BEDS VACANT BETWEEN DISCHARGE

GROUP III.—General Hospitals having a

Percentage of Average Complement closed from causes normally recurring (see Section A, Col. 11).	HOSPITALS.	Medical.			Surgical.			Medical or Surgical.			Maternity.			Gynaecological.		
		Average Number of Beds.		Percentage of Open Beds Vacant.	Average Number of Beds.		Percentage of Open Beds Vacant.	Average Number of Beds.		Percentage of Open Beds Vacant.	Average Number of Beds.		Percentage of Open Beds Vacant.	Average Number of Beds.		Percentage of Open Beds Vacant.
		Open.	Vacant.		Open.	Vacant.		Open.	Vacant.		Open.	Vacant.		Open.	Vacant.	
1	2	3	4	5	6	7	8	9	10	11	12	13	14	15	16	17
11·7	Bolingbroke ...	35·5	3·7	10·3	58·6	3·1	5·2	—	—	—	—	—	—	—	—	—
—	Connaught ...	35·0	4·5	13·0	47·0	3·0	6·4	—	—	—	—	—	—	—	—	—
7·2	Croydon ...	46·8	4·9	10·5	73·8	5·2	7·1	—	—	—	—	—	—	—	—	—
0·5	East Ham § ...	—	—	—	—	—	—	70·1	12·4	17·7	—	—	—	—	—	—
—	French ...	24·0	4·0	16·7	37·0	6·0	16·2	—	—	—	—	—	—	3·0	0·0	0·0
2·8	Hampstead § ...	40·7	3·1	7·5	51·7	4·3	8·3	—	—	—	—	—	—	6·0	0·9	15·2
13·9	Hospital of St. John and St. Elizabeth §	42·2	6·3	14·9	44·0	5·7	12·9	—	—	—	—	—	—	—	—	—
0·3	King Edward Memorial (Ealing)	34·9	3·8	10·9	42·8	5·0	11·8	—	—	—	—	—	—	10·0	1·0	10·0
3·0	London Jewish ...	52·0	2·6	5·1	43·2	5·4	12·6	—	—	—	—	—	—	3·7	0·9	24·7
3·7	London Temperance §	47·7	1·9	4·1	71·3	9·4	13·2	—	—	—	—	—	—	4·0	1·9	47·6
2·9	Metropolitan ...	69·0	8·0	11·6	58·0	6·0	10·4	—	—	—	—	—	—	6·0	1·0	16·7
2·5	Poplar ...	32·4	6·7	20·7	75·8	11·0	14·6	—	—	—	—	—	—	—	—	—
—	Royal (Richmond)	—	—	—	—	—	—	82·0	9·7	11·8	—	—	—	—	—	—
4·0	St. John's (Lewisham) §	27·6	3·6	13·2	56·8	7·2	12·6	—	—	—	—	—	—	6·8	0·3	5·0
0·5	Willesden ...	—	—	—	—	—	—	85·5	9·2	10·8	—	—	—	5·0	2·4	47·4
0·8	Wimbledon ...	—	—	—	—	—	—	58·5	13·0	22·2	—	—	—	—	—	—
1·0	Woolwich War Memorial §	39·3	3·1	7·8	43·8	2·5	5·8	—	—	—	7·8	1·8	23·5	—	—	—
3·7	Totals and Group Averages	527·1	56·2	10·7	703·8	73·8	10·5	296·1	44·3	15·0	7·8	1·8	23·5	44·5	8·4	19·0

GROUP IV.—General Hospitals having a complement

Percentage of Average Complement closed from causes normally recurring (see Section A, Col. 11).	HOSPITALS.	Medical.			Surgical.			Medical or Surgical.		
		Average Number of Beds.		Percentage of Open Beds Vacant.	Average Number of Beds.		Percentage of Open Beds Vacant.	Average Number of Beds.		Percentage of Open Beds Vacant.
		Open.	Vacant.		Open.	Vacant.		Open.	Vacant.	
1	2	3	4	5	6	7	8	9	10	11
%	Acton ...	—	—	—	—	—	—	44·6	4·8	10·8
—	Italian ...	—	—	—	—	—	—	57·0	18·0	31·6
—	Kensington, Fulham and Chelsea	Closed for rebuilding.			—	—	—	—	—	—
0·4	King George, Ilford § ...	—	—	—	—	—	—	46·7	1·1	2·4
5·6	Mildmay Mission ...	—	—	—	—	—	—	52·9	8·1	15·3
0·9	Nelson ...	—	—	—	—	—	—	47·5	7·5	15·7
—	Seamen's (Docks) ...	25·0	3·0	12·0	28·0	5·0	17·9	—	—	—
0·1	Weir ...	—	—	—	—	—	—	26·0	3·5	13·4
1·0	Totals and Group Averages ...	25·0	3·0	12·0	28·0	5·0	17·9	274·7	43·0	15·6

§ See notes on pages 53 to 55.

AND ADMISSION OF PATIENTS.

SECTION B.

complement of 70 to 149 beds.

Accident.			Isolation, Observation and Septic.			Pay Beds.			Staff Beds.			Total all Classes.			HOSPITALS.
Average Number of Beds.		Percentage of Open Beds Vacant.	Average Number of Beds.		Percentage of Open Beds Vacant.	Average Number of Beds.		Percentage of Open Beds Vacant.	Average Number of Beds.		Percentage of Open Beds Vacant.	Average Number of Beds.		Percentage of Open Beds Vacant.	
Open.	Vacant.		Open.	Vacant.		Open.	Vacant.		Open.	Vacant.		Open.	Vacant.		
18	19	20	21	22	23	24	25	26	27	28	29	30	31	32	
—	—	%	—	—	%	12.8	3.0	23.3	—	—	—	106.9	9.8	9.1	Bolingbroke
5.0	0.0	0.0	3.0	1.5	48.3	10.0	3.7	37.2	—	—	—	100.0	12.7	12.7	Connaught
—	—	—	—	—	—	—	—	—	—	—	—	120.6	10.1	8.4	Croydon
—	—	—	—	—	—	2.7	1.6	57.6	—	—	—	72.8	14.0	19.2	East Ham
—	—	—	6.0	6.0	100.0	—	—	—	—	—	—	70.0	16.0	23.3	French
1.1	0.3	24.3	7.0	6.0	85.6	13.2	2.9	22.1	—	—	—	119.7	17.5	14.6	Hampstead
—	—	—	3.0	2.9	97.3	26.2	4.1	15.7	—	—	—	115.4	19.0	16.6	Hospital of St. John and St. Elizabeth
2.0	0.0	0.0	8.0	4.7	58.8	8.0	0.4	5.0	—	—	—	105.7	14.9	13.8	King Edward Memorial (Baling)
1.0	1.0	100.0	3.0	1.3	44.0	—	—	—	1.0	0.4	35.0	103.9	11.6	11.2	London Jewish
—	—	—	3.0	2.9	97.0	5.0	0.7	13.6	—	—	—	131.0	16.8	12.8	London Temperance
—	—	—	—	—	—	—	—	—	—	—	—	133.0	15.0	11.5	Metropolitan
—	—	—	0.9	0.4	46.0	—	—	—	6.0	5.4	90.2	115.1	23.5	20.5	Poplar
4.0 *	1.3	32.3	2.0	1.7	87.5	—	—	—	—	—	—	88.0	12.7	14.4	Royal (Richmond)
—	—	—	2.9	2.2	76.6	2.9	0.5	15.5	1.0	0.4	42.3	98.0	14.2	14.5	St. John's (Lewisham)
—	—	—	—	—	—	15.0	3.4	22.6	—	—	—	105.5	15.0	14.2	Willesden
—	—	—	1.0	0.5	50.0	10.0	3.0	30.0	—	—	—	69.5	16.5	23.7	Wimbledon
—	—	—	—	—	—	19.9	3.9	19.8	—	—	—	110.8	11.3	10.3	Woolwich War Memorial
13.1	2.6	19.5	39.8	30.1	75.8	125.7	27.2	21.6	8.0	6.2	77.4	1,765.9	250.6	14.2	Totals and Group Averages

under 70 beds with a Resident Medical Officer.

Accident.			Pay Beds.			Total all Classes.			HOSPITALS.
Average Number of Beds.		Percentage of Open Beds Vacant.	Average Number of Beds.		Percentage of Open Beds Vacant.	Average Number of Beds.		Percentage of Open Beds Vacant.	
Open.	Vacant.		Open.	Vacant.		Open.	Vacant.		
12	13	14	15	16	17	18	19	20	
—	—	%	6·7	2·1	30·5	51·3	6·9	13·4	Acton
—	—	—	—	—	—	57·0	18·0	31·6	Italian
—	—	—	—	—	—	Closed	for rebuilding.		Kensington, Fulham and Chelsea
4·0	0·0	0·0	13·1	7·8	59·6	63·8	8·9	14·3	King George, Ilford
—	—	—	—	—	—	52·9	8·1	15·3	Mildmay Mission
—	—	—	14·0	8·7	62·4	61·5	16·2	25·3	Nelson
—	—	—	—	—	—	53·0	8·0	15·1	Seamen's (Docks)
—	—	—	4·0	1·7	42·0	30·0	5·2	18·1	Weir
4·0	0·0	0·0	37·8	20·3	53·6	369·5	71·3	19·4	Totals and Group Averages

SECTION B.

BEDS VACANT BETWEEN THE DISCHARGE

GROUP V.—General and Cottage Hospitals having a complement

Percentage of Average Complement closed from causes normally recurring (see Section A, Col. 11).	HOSPITALS.	Medical.			Surgical.			Medical or Surgical.			Maternity.		
		Average Number of Beds.		Percentage of Open Beds Vacant.	Average Number of Beds.		Percentage of Open Beds Vacant.	Average Number of Beds.		Percentage of Open Beds Vacant.	Average Number of Beds.		Percentage of Open Beds Vacant.
		Open.	Vacant.		Open.	Vacant.		Open.	Vacant.		Open.	Vacant.	
1	2	3	4	5	6	7	8	9	10	11	12	13	14
%				%			%			%			%
—	Beckenham	—	—	—	—	—	—	37·0	7·6	20·6	—	—	—
6·7	Blackheath and Charlton	—	—	—	—	—	—	26·1	5·9	22·5	—	—	—
—	Bromley§	—	—	—	—	—	—	34·0	12·0	35·3	—	—	—
—	Carshalton	—	—	—	21·0	3·0	14·3	—	—	—	2·0	1·0	50·0
0·3	Enfield	—	—	—	—	—	—	49·8	8·4	16·9	—	—	—
0·5	Finchley	—	—	—	—	—	—	37·7	5·8	15·3	—	—	—
—	Forest	—	—	—	—	—	—	28·7(a)	9·2	31·9	—	—	—
—	Harrow	—	—	—	—	—	—	39·0	4·9	12·6	—	—	—
—	Hendon	—	—	—	—	—	—	45·0	10·6	23·4	—	—	—
—	Hornsey	—	—	—	—	—	—	32·0	9·6	30·1	—	—	—
1·2	Mildmay Memorial ...	—	—	—	—	—	—	25·5	5·8	23·0	—	—	—
0·9	Norwood	—	—	—	—	—	—	27·7	6·2	22·4	—	—	—
—	Passmore Edwards (Wood Green)	—	—	—	—	—	—	52·0(a)	11·4	21·9	—	—	—
5·5	Victoria (Barnet)...	26·5	8·4	31·8	—	—	—	—	—	—	—	—	—
—	Woodford Jubilee ...	—	—	—	—	—	—	25·0	6·9	27·6	—	—	—
0·8	Totals and Group Averages	26·5	8·4	31·8	21·0	3·0	14·3	459·5	104·3	22·7	2·0	1·0	50·0

(a) Including reserved Pay Beds, separate statistics not being available.

GROUP VI.—General and Cottage Hospitals having a complement

Percentage of Average Complement closed from causes normally recurring (see Section A, Col. 11).	HOSPITALS.	Medical or Surgical.			Pay Beds.		
		Average Number of Beds.		Percentage of Open Beds Vacant.	Average Number of Beds.		Percentage of Open Beds Vacant.
		Open.	Vacant.		Open.	Vacant.	
1	2	3	4	5	6	7	8
%				%			%
—	Eltham and Mottingham	22·0	5·9	27·0	4·0	0·9	21·0
—	Hanwell	15·0	2·7	18·3	1·0	0·5	54·0
—	Kingston Victoria	22·2	8·0	36·1	—	—	—
—	Phillips Memorial (Homœopathic) ...	15·7(a)	9·0	57·3	—	—	—
7·3	St. John's (Twickenham)	17·6	4·3	24·6	0·9	0·2	22·8
0·4	Wembley	20·4	2·4	11·8	4·0	1·0	25·0
1·7	Totals and Group Averages ...	112·9	32·3	28·7	9·9	2·6	26·1

(a) Including reserved Pay Beds, separate statistics not being available.

§ See notes on pages 53 to 55.

AND ADMISSION OF PATIENTS.

SECTION B.

of 30 beds or over without a Resident Medical Officer.

Accident.			Isolation, Observation and Septic.			Pay Beds.			Staff Beds.			Total all Classes			HOSPITALS.
Average Number of Beds.		Percentage of Open Beds Vacant.	Average Number of Beds.		Percentage of Open Beds Vacant.	Average Number of Beds.		Percentage of Open Beds Vacant.	Average Number of Beds.		Percentage of Open Beds Vacant.	Average Number of Beds.		Percentage of Open Beds Vacant.	
Open.	Vacant.		Open.	Vacant.		Open.	Vacant.		Open.	Vacant.		Open.	Vacant.		
15	16	17	18	19	20	21	22	23	24	25	26	27	28	29	
—	—	%	—	—	%	8.0	1.2	14.5	—	—	%	45.0	8.8	19.5	Beckenham
—	—	—	—	—	—	1.9	0.6	30.9	—	—	—	28.0	6.5	23.0	Blackheath and Charlton Bromley
2.0	0.0	0.0	2.0	1.0	50.0	4.0	2.7	68.8	—	—	—	42.0	15.7	38.2	Carshalton
1.0	0.0	0.0	—	—	—	6.0	1.0	16.7	—	—	—	30.0	5.0	17.8	Enfield
—	—	—	—	—	—	2.0	0.6	30.0	1.0	0.5	51.0	52.8	9.5	18.0	Finchley
8.0	1.0	12.9	—	—	—	9.0	0.7	7.3	—	—	—	54.7	7.5	13.6	Forest
—	—	—	—	—	—	—	—	—	—	—	—	28.7	9.2	31.9	Harrow
1.0	0.3	31.0	—	—	—	—	—	—	—	—	—	40.0	5.2	13.1	Hendon
—	—	—	—	—	—	5.0	1.2	24.2	—	—	—	50.0	11.8	23.5	Hornsey
—	—	—	—	—	—	16.0	2.9	17.8	—	—	—	48.0	12.5	26.0	Mildmay Memorial
—	—	—	—	—	—	16.0	9.5	59.3	—	—	—	41.5	15.3	37.0	Norwood
2.0	2.0	100.0	—	—	—	2.0	1.1	56.5	—	—	—	31.7	9.3	29.5	Passmore Edwards (Wood Green)
—	—	—	—	—	—	—	—	—	—	—	—	52.0	11.4	21.9	Victoria
—	—	—	—	—	—	3.7	1.1	29.7	—	—	—	30.2	9.5	31.5	(Barnet) Woodford Jubilee
—	—	—	—	—	—	6.0	2.0	33.3	—	—	—	31.0	8.9	28.7	Totals and Group Averages
14.0	3.3	23.9	2.0	1.0	50.0	79.6	24.6	30.8	1.0	0.5	51.0	605.6	146.1	24.2	

under 30 beds without a Resident Medical Officer.

Total all Classes.			HOSPITALS.
Average Number of Beds.		Percentage of Open Beds Vacant.	
Open.	Vacant.		
9	10	11	
		%	
26·0	6·8	26·0	Eltham and Mottingham
16·0	3·2	20·6	Hanwell
22·2	8·0	36·1	Kingston Victoria
15·7	9·0	57·3	Phillips Memorial (Homœopathic)
18·5	4·5	24·5	St. John's (Twickenham)
24·4	3·4	13·9	Wembley
122·8	34·9	28·5	Totals and Group Averages

SECTION B.

BEDS VACANT BETWEEN DISCHARGE

GROUP VII.—Hospitals

Percentage of Average Complement closed from causes normally recurring (see Section A Col. 11).	HOSPITALS.	Medical.			Surgical.			Maternity.			Gynecological.		
		Average Number of Beds.		Percentage of Open Beds Vacant.	Average Number of Beds.		Percentage of Open Beds Vacant.	Average Number of Beds.		Percentage of Open Beds Vacant.	Average Number of Beds.		Percentage of Open Beds Vacant.
		Open.	Vacant.		Open.	Vacant.		Open.	Vacant.		Open.	Vacant.	
1	2	3	4	5	6	7	8	9	10	11	12	13	14
%				%			%			%			%
4.7	Chelsea	—	—	—	—	—	—	—	—	—	77.8	8.8	11.4
—	Elizabeth Garrett Anderson ...	38.0	0.9	2.3	36.2	0.3	0.8	9.0	0.6	7.0	(a)	—	—
8.2	Grosvenor	—	—	—	—	—	—	—	—	—	29.4	2.5	8.4
1.0	Hospital for Women	—	—	—	—	—	—	—	—	—	67.3	2.5	3.7
7.0	Samaritan Free	—	—	—	—	—	—	—	—	—	65.1	8.1	11.9
1.5	South London	31.4	0.3	0.8	61.1	1.3	2.1	—	—	—	(a)	—	—
3.0	Totals and Group Averages ...	69.4	1.2	1.6	97.3	1.6	1.6	9.0	0.6	7.0	239.6	21.9	9.1

(a) No Beds are specially reserved for Gynecological Cases, which are treated in the General Wards.

GROUP VIII.—Children's

Percentage of Average Complement closed from causes normally recurring (see Section A Col. 11).	HOSPITALS.	Medical.			Surgical.			Accident.		
		Average Number of Beds.		Percentage of Open Beds Vacant.	Average Number of Beds.		Percentage of Open Beds Vacant.	Average Number of Beds.		Percentage of Open Beds Vacant.
		Open.	Vacant.		Open.	Vacant.		Open.	Vacant.	
1	2	3	4	5	6	7	8	9	10	11
%				%			%			%
4.3	Belgrave §	34.3	2.8	8.2	36.4	3.5	9.6	—	—	—
3.3	East London	61.5	12.9	21.0	38.9	9.2	23.6	—	—	—
2.2	Evelina	38.9	7.9	20.4	39.3	10.3	26.2	—	—	—
2.7	Hospital for Sick Children	92.9	3.7	3.9	115.4	4.8	4.2	—	—	—
8.3	Paddington Green ..	22.4	3.6	16.3	16.1	1.6	9.8	—	—	—
1.6	Queen's	69.4	3.2	4.6	61.0	3.9	6.4	—	—	—
—	South Eastern	24.0	6.7	27.9	25.0	4.3	17.3	4.0	2.7	67.5
3.2	Victoria §	55.5	7.6	13.7	54.2	14.3	26.4	—	—	—
2.9	Totals and Group Averages	398.9	48.4	12.2	386.3	51.9	13.4	4.0	2.7	67.5

§ See notes on pages 53 to 55.

AND ADMISSION OF PATIENTS.

SECTION B.

for Women.

Isolation, Observation and Septic.			Pay Beds.			Staff Beds.			Total all Classes			HOSPITALS.
Average Number of Beds.		Percentage of Open Beds Vacant.	Average Number of Beds.		Percentage of Open Beds Vacant.	Average Number of Beds.		Percentage of Open Beds Vacant.	Average Number of Beds.		Percentage of Open Beds Vacant.	
Open.	Vacant.		Open.	Vacant.		Open.	Vacant.		Open.	Vacant.		
15	16	17	18	19	20	21	22	23	24	25	26	
—	—	%	17.5	1.8	10.2	—	—	%	95.3	10.6	11.2	Chelsea.
0.9	0.5	57.8	5.4	0.9	16.9	1.8	1.4	78.9	91.3	4.6	5.1	Elizabeth Garrett Anderson.
—	—	—	4.6(a)	1.9	41.2	—	—	—	34.0	4.4	12.8	Grosvenor.
2.0	2.0	100.0	11.9	3.1	25.8	—	—	—	81.2	7.6	9.3	Hospital for Women.
—	—	—	—	—	—	—	—	—	65.1	8.1	11.9	Samaritan Free.
—	—	—	20.4	0.3	1.5	—	—	—	112.9	1.9	1.6	South London.
2.9	2.5	86.9	59.8	8.0	13.3	1.8	1.4	78.9	479.8	37.2	7.7	Totals and Group Averages.

(a) Includes 1.8 semi-private beds.

Hospitals.

Isolation, Observation and Septic.			Pay Beds.			Total all Classes.			HOSPITALS.
Average Number of Beds.		Percentage of Open Beds Vacant.	Average Number of Beds.		Percentage of Open Beds Vacant.	Average Number of Beds.		Percentage of Open Beds Vacant.	
Open.	Vacant.		Open.	Vacant.		Open.	Vacant.		
12	13	14	15	16	17	18	19	20	
—	—	%	2·0	1·0	50·0	72·7	7·3	10·1	Belgrave.
35·0	22·7	64·9	—	—	—	135·4	44·8	33·1	East London.
—	—	—	—	—	—	78·2	18·2	23·8	Evelina.
37·0	17·2	46·4	—	—	—	245·3	25·7	10·5	Hospital for Sick Children.
—	—	—	—	—	—	38·5	5·2	13·6	Paddington Green.
1·5	1·5	100·0	—	—	—	131·9	8·6	6·5	Queen's.
4·0	3·7	92·5	4·0	2·8	70·0	61·0	20·2	33·1	South Eastern.
6·4	5·4	85·4	11·9	7·0	58·5	128·0	34·3	26·8	Victoria.
83·9	50·5	60·2	17·9	10·8	60·1	891·0	164·3	18·5	Totals and Group Averages.

SECTION B.

BEDS VACANT BETWEEN THE DISCHARGE

GROUP IX.—Children's (Long Period) Hospitals.

Percentage of Average Complement closed from causes normally recurring (see Section A, Col. 11).	HOSPITALS.	Medical or Surgical.		
		Average Number of Beds.		Percentage of Open Beds Vacant.
		Open.	Vacant.	
		3	4	
1	2			5
%				%
—	Cheyne	67·0	6·6	9·8
16·7	Children's, Hampstead	52·5	2·0	3·8
0·1	St. Monica's	26·0	4·5	17·0
8·4	Santa Claus	18·1	0·9	5·2
—	Winifred House	18·0	0·2	0·9
6·3	Totals and Group Averages	181·6	14·2	7·7

GROUP X.—Maternity Hospitals.

Percentage of Average Complement closed from causes normally recurring (see Section A, Col. 11.)	HOSPITALS.	Maternity.			Gynaecological.			Isolation, Observation and Septic.			Pay Beds.			Total all Classes.		
		Average Number of Beds.		Percentage of Open Beds Vacant.	Average Number of Beds.		Percentage of Open Beds Vacant.	Average Number of Beds.		Percentage of Open Beds Vacant.	Average Number of Beds.		Percentage of Open Beds Vacant.	Average Number of Beds.		Percentage of Open Beds Vacant.
		Open.	Vacant.		Open.	Vacant.		Open.	Vacant.		Open.	Vacant.		Open.	Vacant.	
		3	4		6	7		8	10		12	13		15	16	
1	2	3	4	5	6	7	8	9	10	11	12	13	14	15	16	17
%				%						%			%			%
—	British for Mothers	28·7	2·1	7·3	—	—	—	7·3	7·1	97·3	—	—	—	36·0	9·2	25·5
9·7	City of London ...	57·1	0·0	0·0	—	—	—	—	—	—	7·0	0·6	8·6	64·1	0·6	0·9
—	Clapham ...	50·0	14·6	29·1	—	—	—	—	—	—	—	—	—	50·0	14·6	29·1
0·6	East End ...	55·7	6·7	12·0	—	—	—	—	—	—	—	—	—	55·7	6·7	12·0
2·1	General ...	44·1	8·1	18·3	—	—	—	—	—	—	—	—	—	44·1	8·1	18·3
1·8	Jewish ...	31·4	8·4	26·8	2·0	0·0	0·0	—	—	—	—	—	—	33·4	8·4	25·2
2·8	Mothers' (Salvation Army)	87·5	0·8	0·9	—	—	—	—	—	—	—	—	—	87·5	0·8	0·9
—	Plaistow § ...	42·0	0·6	1·4	—	—	—	—	—	—	—	—	—	42·0	0·6	1·4
—	Queen Charlotte's	80·0	1·9	2·4	—	—	—	—	—	—	—	—	—	80·0	1·9	2·4
2·2	Totals and Group Averages	476·5	43·2	9·0	2·0	0·0	0·0	7·3	7·1	97·3	7·0	0·6	8·6	492·8	50·9	10·3

§ See notes on pages 53 to 55.

AND ADMISSION OF PATIENTS.

SECTION B.

GROUP XI.—Ophthalmic Hospitals.

Percentage of Average Complement closed from causes normally recurring (see Section A, Col. 11).	HOSPITALS.	Surgical.			Medical or Surgical.			Pay Beds.			Total all Classes.		
		Average Number of Beds.		Percentage of Open Beds Vacant.	Average Number of Beds.		Percentage of Open Beds Vacant.	Average Number of Beds.		Percentage of Open Beds Vacant.	Average Number of Beds.		Percentage of Open Beds Vacant.
		Open.	Vacant.		Open.	Vacant.		Open.	Vacant.		Open.	Vacant.	
1	2	3	4	5	6	7	8	9	10	11	12	13	14
%				%			%			%			%
—	Central London ..	37.0	11.2	30.1	—	—	—	3.0	1.6	53.0	40.0	12.8	31.9
1.6	Royal Eye ..	—	—	—	43.3	6.5	15.0	2.0	0.0	0.0	45.3	6.5	14.3
0.5	Royal London ..	110.4	6.1	5.5	—	—	—	—	—	—	110.4	6.1	5.5
—	Royal Westminster	—	—	—	52.1	8.9	17.2	14.0	6.0	42.9	66.1	14.9	22.6
—	Western§ ..	18.0	0.7	3.9	—	—	—	—	—	—	18.0	0.7	3.9
0.4	Totals and Group Averages	165.4	18.0	10.8	95.4	15.4	16.2	19.0	7.6	40.0	279.8	41.0	14.6

GROUP XII.—Hospitals for Disorders of the Nervous System.

Percentage of Average Complement closed from causes normally recurring (see Section A, Col. 11).	HOSPITALS.	Medical.			Medical or Surgical.			Isolation, Observation and Septic.			Staff Beds.			Total all Classes.		
		Average Number of Beds.		Percentage of Open Beds Vacant.	Average Number of Beds.		Percentage of Open Beds Vacant.	Average Number of Beds.		Percentage of Open Beds Vacant.	Average Number of Beds.		Percentage of Open Beds Vacant.	Average Number of Beds.		Percentage of Open Beds Vacant.
		Open.	Vacant.		Open.	Vacant.		Open.	Vacant.		Open.	Vacant.		Open.	Vacant.	
1	2	3	4	5	6	7	8	9	10	11	12	13	14	15	16	17
%				%			%			%			%			%
0.3	Hospital for Epilepsy & Paralysis§	—	—	—	81.7	1.8	2.3	—	—	—	—	—	—	81.7	1.8	2.3
1.9	National, Queen Sq.	184.2	10.2	5.7	—	—	—	—	—	—	—	—	—	184.2	10.2	5.7
(0.03)	West End..	76.0	0.7	0.9	—	—	—	3.0	3.0	99.7	1.0	0.5	46.0	80.0	4.2	5.2
1.1	Totals and Group Av.	260.2	10.9	4.2	81.7	1.8	2.3	3.0	3.0	99.7	1.0	0.5	46.0	345.9	16.2	4.8

GROUP XIII.—Throat, Nose and Ear Hospitals.

Percentage of Average Complement closed from causes normally recurring (see Section A, Col. 11).	HOSPITALS.	Surgical.			Pay Beds.			Total all Classes.		
		Average Number of Beds.		Percentage of Open Beds Vacant.	Average Number of Beds.		Percentage of Open Beds Vacant.	Average Number of Beds.		Percentage of Open Beds Vacant.
		Open.	Vacant.		Open.	Vacant.		Open.	Vacant.	
1	2	3	4	5	6	7	8	9	10	11
%				%			%			%
0.5	Central London ..	40.9	6.5	15.9	7.0	2.4	34.3	47.9	8.9	18.6
1.2	Golden Square ..	70.8	8.0	11.4	24.0	8.6	35.8	94.8	16.6	17.5
8.5	Metropolitan ..	20.1	5.3	26.6	—	—	—	20.1	5.3	26.6
1.9	Totals and Group Averages	131.8	19.8	15.1	31.0	11.0	35.5	162.8	30.8	18.9

§ See notes on pages 53 to 55.

SECTION B.

BEDS VACANT BETWEEN THE DISCHARGE

GROUP XIV.—Unclassified Special

Percentage of Average Complement closed from causes normally recurring (see Section A, Col. 11).	HOSPITALS.	Medical.			Surgical.			Medical or Surgical.			Maternity.			Gynæcological.		
		Average Number of Beds.		Percentage of Open Beds Vacant.	Average Number of Beds.		Percentage of Open Beds Vacant.	Average Number of Beds.		Percentage of Open Beds Vacant.	Average Number of Beds.		Percentage of Open Beds Vacant.	Average Number of Beds.		Percentage of Open Beds Vacant.
		Open.	Vacant.		Open.	Vacant.		Open.	Vacant.		Open.	Vacant.		Open.	Vacant.	
1	2	3	4	5	6	7	8	9	10	11	12	13	14	15	16	17
%				%			%			%			%			%
0·2	All Saints' (Gen.-Ur.)	—	—	—	28·0	3·7	13·1	—	—	—	—	—	—	—	—	—
3·6	City of London (Heart and Lungs)§	173·4	14·5	8·3	—	—	—	—	—	—	—	—	—	—	—	—
10·5	Florence Nightingale (Gentlewomen)	—	—	—	34·0	6·3	18·4	—	—	—	—	—	—	—	—	—
1·0	Gordon (Fistula, etc.)	—	—	—	33·6 (a)	3·1	9·9	—	—	—	—	—	—	—	—	—
0·8	Hospital for Consumption (Brompton)	262·9	8·4	3·2	24·7	2·6	10·4	—	—	—	—	—	—	—	—	—
0·5	„ (Frimley)§	149·2	6·2	3·9	—	—	—	—	—	—	—	—	—	—	—	—
—	Hostel of St. Luke (Clergy)	—	—	—	—	—	—	28·8	0·8	2·9	—	—	—	—	—	—
5·8	Infants' ...	—	—	—	—	—	—	47·1	3·3	6·9	—	—	—	—	—	—
4·0	Invalid and Crippled Children's §	—	—	—	—	—	—	21·1	6·5	30·8	—	—	—	—	—	—
4·6	Inv. Chd. Aid Assn. (Heart Hospital)	79·8	4·8	6·6	—	—	—	—	—	—	—	—	—	—	—	—
—	London Fever§ ...	200·0	77·5	38·7	—	—	—	—	—	—	—	—	—	—	—	—
0·4	London Lock (Female)§	—	—	—	134·3	31·3	23·3	—	—	—	10·0	6·0	60·0	10·0	6·0	60·0
—	London Lock (Male)§	—	—	—	26·0	6·0	23·1	—	—	—	—	—	—	—	—	—
0·6	Middlesex Cancer ...	—	—	—	89·5	9·1	10·2	—	—	—	—	—	—	—	—	—
—	Mount Vernon (Cancer)§	10·0	5·3	53·0	128·0	60·2	47·0	—	—	—	—	—	—	—	—	—
—	National Heart ...	46·0	1·8	4·0	—	—	—	—	—	—	—	—	—	—	—	—
4·4	Princess Louise Kensington (Children)§	20·6	0·8	3·8	19·6	2·7	13·7	—	—	—	—	—	—	—	—	—
3·1	Royal National Orthopaedic	—	—	—	152·7	3·7	2·4	—	—	—	—	—	—	—	—	—
0·2	„ (Stanmore)	—	—	—	229·3	0·5	0·2	—	—	—	—	—	—	—	—	—
2·7	Royal Waterloo (Children & Women)§	52·7	5·5	10·5	39·0	4·2	10·8	—	—	—	—	—	—	13·0	1·7	13·1
—	St. Andrew's Dollis Hill (Middle Classes)	—	—	—	—	—	—	46·7	0·0	0·0	—	—	—	—	—	—
—	St. Columba's (Advanced Cases)	—	—	—	—	—	—	50·0	13·8	27·7	—	—	—	—	—	—
8·8	St. John's (Skin) ...	30·1	5·1	17·0	—	—	—	—	—	—	—	—	—	—	—	—
5·6	St. Luke's (Advanced Cases)	—	—	—	—	—	—	45·3	4·2	9·3	—	—	—	—	—	—
2·9	St. Mark's (Fistula, etc.)	—	—	—	59·9	1·8	3·0	—	—	—	—	—	—	—	—	—
4·1	St. Mary's Plaistow (Women & Children)	—	—	—	—	—	—	55·3	1·6	2·9	—	—	—	8·0	0·6	7·9
—	St. Nicholas (Country branch of Cheyne: Children, long period)	—	—	—	—	—	—	33·0	0·2	0·6	—	—	—	—	—	—
—	St. Paul's (Gen.-Ur.)	—	—	—	22·0	1·0	4·4	—	—	—	—	—	—	—	—	—
—	St. Peter's (Stone) ...	—	—	—	29·1	1·1	3·6	—	—	—	—	—	—	—	—	—
0·3	St. Saviour's (Gentlewomen)	20·9	6·1	29·2	—	—	—	—	—	—	—	—	—	—	—	—
—	Seamen's (Tropical Diseases)	8·0	0·0	0·0	—	—	—	—	—	—	—	—	—	—	—	—
—	„ (Sanatorium, Liphook)§	49·0	7·1	14·5	31·0	0·3	0·9	—	—	—	—	—	—	—	—	—
7·7	Stoke Newington (Women)	—	—	—	—	—	—	23·1	6·1	26·3	3·7	2·1	56·6	—	—	—
1·7	Totals and Group Averages	1,102·6	143·1	13·0	1,080·7	137·6	12·7	350·4	36·5	10·4	13·7	8·1	59·1	31·0	8·3	26·9

(a) Including reserved Pay Beds, separate statistics not being available.

§ See notes on pages 53 to 55.

AND ADMISSION OF PATIENTS.

SECTION B.

Hospitals (not comparable).

Accident.			Isolation, Observation and Septic.			Pay Beds.			Staff Beds.			Total all Classes.			HOSPITALS.
Average Number of Beds.		Percentage of Open Beds Vacant.	Average Number of Beds.		Percentage of Open Beds Vacant.	Average Number of Beds.		Percentage of Open Beds Vacant.	Average Number of Beds.		Percentage of Open Beds Vacant.	Average Number of Beds.		Percentage of Open Beds Vacant.	
Open.	Vacant.		Open.	Vacant.		Open.	Vacant.		Open.	Vacant.		Open.	Vacant.		
18	19	20	21	22	23	24	25	26	27	28	29	30	31	32	
—	—	%	—	—	%	1.9	1.1	58.8	—	—	%	29.9	4.8	16.1	All Saints' (Gen.-Ur.)
—	—	—	—	—	—	2.2	0.9	44.4	1.5	0.4	26.0	177.1	15.8	8.9	City of London (Heart and Lungs)
—	—	—	—	—	—	—	—	—	—	—	—	34.0	6.3	18.4	Florence Nightingale (Gentlewomen)
—	—	—	—	—	—	—	—	—	—	—	—	33.6	3.1	9.9	Gordon (Fistula, etc.)
—	—	—	—	—	—	42.8	6.1	14.4	—	—	—	330.4	17.1	5.2	Hospital for Consumption (Brompton)
—	—	—	—	—	—	—	—	—	—	—	—	149.2	6.2	3.9	„ „ (Frimley)
—	—	—	—	—	—	—	—	—	—	—	—	28.8	0.8	2.9	Hostel of St. Luke (Clergy)
—	—	—	—	—	—	—	—	—	—	—	—	47.1	3.3	6.9	Infants'
—	—	—	—	—	—	—	—	—	—	—	—	21.1	6.5	30.8	Invalid and Crippled Children's
—	—	—	—	—	—	—	—	—	—	—	—	79.8	4.8	6.6	Inv. Chd. Aid Assn. (Heart Hospital)
—	—	—	—	—	—	—	—	—	—	—	—	200.0	77.5	38.7	London Fever
—	—	—	1.0	1.0	100.0	5.0	3.0	60.0	—	—	—	160.3	47.3	29.5	London Lock (Female)
—	—	—	—	—	—	12.0	7.5	62.1	—	—	—	38.0	13.5	35.4	„ „ (Male)
—	—	—	—	—	—	—	—	—	—	—	—	89.5	9.1	10.2	Middlesex Cancer
—	—	—	—	—	—	12.0	7.0	58.3	—	—	—	150.0	72.5	48.3	Mount Vernon (Cancer)
—	—	—	—	—	—	—	—	—	—	—	—	46.0	1.8	4.0	National Heart
—	—	—	—	—	—	—	—	—	—	—	—	40.2	3.5	8.6	Princess Louise Kensington (Children)
—	—	—	—	—	—	12.0	3.0	25.0	—	—	—	164.7	6.7	4.1	Royal National Orthopaedic
—	—	—	—	—	—	—	—	—	—	—	—	229.3	0.5	0.2	„ „ (Stanmore)
—	—	—	10.0	6.0	60.0	9.0	3.0	33.3	—	—	—	123.7	20.4	16.2	Royal Waterloo (Children and Women)
0.2	0.2	100.0	—	—	—	8.8	0.0	0.0	—	—	—	55.7	0.2	0.3	St. Andrew's, Dollis Hill (Middle Classes)
—	—	—	—	—	—	—	—	—	—	—	—	50.0	13.8	27.7	St. Columba's (Advanced Cases)
—	—	—	—	—	—	—	—	—	—	—	—	30.1	5.1	17.0	St. John's (Skin)
—	—	—	—	—	—	—	—	—	—	—	—	45.3	4.2	9.3	St. Luke's (Advanced Cases)
—	—	—	—	—	—	10.0	3.8	38.1	—	—	—	69.9	5.6	8.0	St. Mark's (Fistula, etc.)
—	—	—	—	—	—	—	—	—	—	—	—	63.3	2.2	3.5	St. Mary's, Plaistow (Women and Children)
—	—	—	—	—	—	—	—	—	—	—	—	33.0	0.2	0.6	St. Nicholas (Country branch of Cheyne: Children, long period)
—	—	—	—	—	—	11.0	4.5	40.6	—	—	—	33.0	5.5	16.4	St. Paul's (Gen.-Ur.)
—	—	—	—	—	—	—	—	—	—	—	—	29.1	1.1	3.6	St. Peter's (Stone)
—	—	—	—	—	—	—	—	—	—	—	—	20.9	6.1	29.2	St. Saviour's (Gentlewomen)
—	—	—	—	—	—	48.0	12.0	25.0	—	—	—	56.0	12.0	21.0	Seamen's (Tropical Diseases)
—	—	—	—	—	—	—	—	—	—	—	—	80.0	7.4	9.2	„ (Sanatorium, Liphook)
—	—	—	—	—	—	1.8	0.5	29.7	—	—	—	28.6	8.7	30.5	Stoke Newington (Women)
0.2	0.2	100.0	11.0	7.0	63.6	176.5	52.4	29.8	1.5	0.4	26.0	2,767.6	393.6	14.2	Totals and Group Averages

SECTION B.

BEDS VACANT BETWEEN THE DISCHARGE

SUMMARY OF

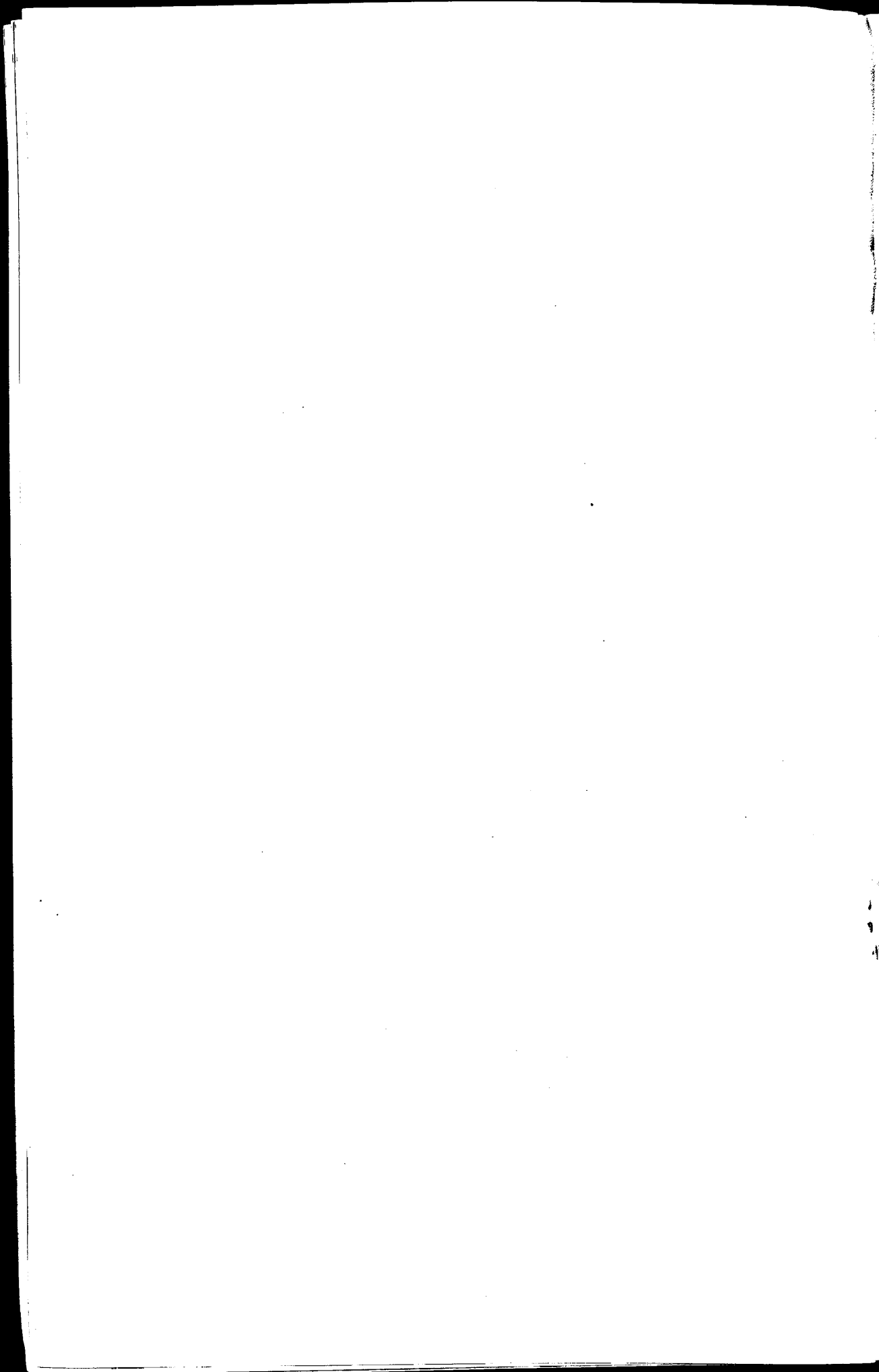
Percentage of Average Complement closed from causes normally recurring (see Section A, Col. 11).	GROUPS.	Medical.			Surgical.			Medical or Surgical.			Maternity.		
		Average Number of Beds.		Percentage of Open Beds Vacant.	Average Number of Beds.		Percentage of Open Beds Vacant.	Average Number of Beds.		Percentage of Open Beds Vacant.	Average Number of Beds.		Percentage of Open Beds Vacant.
		Open.	Vacant.		Open.	Vacant.		Open.	Vacant.		Open.	Vacant.	
1	2	3	4	5	6	7	8	9	10	11	12	13	14
%				%			%			%			%
2.1	I. General Hospitals with Medical Schools	1,867.8	155.0	8.3	2,168.3	235.6	10.9	—	—	—	248.5	18.5	7.5
2.3	II. General Hospitals without Medical Schools having a complement 150 beds or over	666.7	89.9	13.5	618.8	50.1	8.1	—	—	—	58.1	11.0	18.9
3.7	III. General Hospitals having a complement 70 to 149 beds	527.1	56.2	10.7	703.8	73.8	10.5	296.1	44.3	15.0	7.8	1.8	23.5
1.0	IV. General Hospitals having a complement under 70 beds with a Resident Medical Officer	25.0	3.0	12.0	28.0	5.0	17.9	274.7	43.0	15.6	—	—	—
0.8	V. General and Cottage Hospitals having a complement 30 beds or over without a Resident Medical Officer	26.5	8.4	31.8	21.0	3.0	14.3	459.5	104.3	22.7	2.0	1.0	50.0
1.2	VI. General and Cottage Hospitals having a complement under 30 beds without a Resident Medical Officer	—	—	—	—	—	—	112.9	32.3	28.7	—	—	—
3.0	VII. Hospitals for Women	69.4	1.2	1.6	97.3	1.6	1.6	—	—	—	9.0	0.6	7.0
2.9	VIII. Children's Hospitals	398.9	48.4	12.2	386.3	51.9	13.4	—	—	—	—	—	—
6.3	IX. Children's (Long Period) Hospitals	—	—	—	—	—	—	181.6	14.2	7.7	—	—	—
2.2	X. Maternity Hospitals	—	—	—	—	—	—	—	—	—	476.5	43.2	9.0
0.4	XI. Ophthalmic Hospitals	—	—	—	165.4	18.0	10.8	95.4	15.4	16.2	—	—	—
1.1	XII. Hospitals for Disorders of the Nervous System	260.2	10.9	4.2	—	—	—	81.7	1.8	2.3	—	—	—
1.9	XIII. Throat, Nose and Ear Hospitals	—	—	—	131.8	19.8	15.1	—	—	—	—	—	—
1.7	XIV. Unclassified Special Hospitals (not comparable)	1,102.6	143.1	13.0	1,080.7	137.6	12.7	350.4	36.5	10.4	13.7	8.1	59.1
2.1	Totals and Averages for all Hospitals	4,944.2	516.1	10.4	5,401.4	596.4	11.0	1,852.3	291.8	15.8	815.6	84.2	10.3

AND ADMISSION OF PATIENTS.

SECTION B.

ALL GROUPS.

Gynaecological.			Accident.			Isolation, Observation and Septic.			Pay Beds.			Staff Beds.			Total all Classes.			Groups.
Average Number of Beds.		Percentage of Open Beds Vacant.	Average Number of Beds.		Percentage of Open Beds Vacant.	Average Number of Beds.		Percentage of Open Beds Vacant.	Average Number of Beds.		Percentage of Open Beds Vacant.	Average Number of Beds.		Percentage of Open Beds Vacant.	Average Number of Beds.		Percentage of Open Beds Vacant.	
Open.	Vacant.		Open.	Vacant.		Open.	Vacant.		Open.	Vacant.		Open.	Vacant.		Open.	Vacant.		
15	16	17	18	19	20	21	22	23	24	25	26	27	28	29	30	31	32	
		%			%			%			%			%			%	
276.5	18.0	6.5	180.0	33.6	18.7	388.4	97.3	25.0	126.8	21.0	16.6	67.8	35.6	52.6	5,324.1	614.6	11.6	I.
64.9	6.3	9.8	103.9	13.6	13.1	4.0	1.3	32.5	124.1	18.7	15.1	3.0	0.0	0.0	1,643.5	190.9	11.6	II.
44.5	8.4	19.0	13.1	2.6	19.5	39.8	30.1	75.8	125.7	27.2	21.6	8.0	6.2	77.4	1,765.9	250.6	14.2	III.
—	—	—	4.0	0.0	0.0	—	—	—	37.8	20.3	53.6	—	—	—	369.5	71.3	19.4	IV.
—	—	—	14.0	3.3	23.9	2.0	1.0	50.0	79.6	24.6	30.8	1.0	0.5	51.0	605.6	146.1	24.2	V.
—	—	—	—	—	—	—	—	—	9.9	2.6	26.1	—	—	—	122.8	34.9	28.5	VI.
239.6	21.9	9.1	—	—	—	2.9	2.5	86.9	59.8	8.0	13.3	1.8	1.4	78.9	479.8	37.2	7.7	VII.
—	—	—	4.0	2.7	67.5	83.9	50.5	60.2	17.9	10.8	60.1	—	—	—	891.0	164.3	18.5	VIII.
—	—	—	—	—	—	—	—	—	—	—	—	—	—	—	181.6	14.2	7.7	IX.
2.0	0.0	0.0	—	—	—	7.3	7.1	97.3	7.0	0.6	8.6	—	—	—	492.8	50.9	10.3	X.
—	—	—	—	—	—	—	—	—	19.0	7.6	40.0	—	—	—	279.8	41.0	14.6	XI.
—	—	—	—	—	—	3.0	3.0	99.7	—	—	—	1.0	0.5	46.0	345.9	16.2	4.8	XII.
—	—	—	—	—	—	—	—	—	31.0	11.0	35.5	—	—	—	162.8	30.8	18.9	XIII.
31.0	8.3	26.9	0.2	0.2	100.0	11.0	7.0	63.6	176.5	52.4	29.8	1.5	0.4	26.0	2,767.6	393.6	14.2	XIV.
658.5	62.9	9.6	319.2	56.0	17.5	542.3	199.8	36.9	815.1	204.8	25.1	84.1	44.6	53.0	15,432.7	2,056.6	13.3	



SECTION C.

**ANALYSIS SHOWING THE RELATIVE INCIDENCE
OF VACANCY IN BEDS ALLOCATED TO MEN,
WOMEN AND CHILDREN IN THE MEDICAL
AND SURGICAL WARDS (EXCLUDING MATERNITY
AND GYNÆCOLOGICAL BEDS).**

- NOTES :** (a) In many instances Beds are not reserved for Medical cases exclusively or for Surgical cases exclusively and they are shown under the composite heading : Medical or Surgical.
- (b) Figures are stated at the nearest decimal, whilst percentages are calculated on the exact figures.

SECTION C.

Analysis showing the relative incidence of Vacancy in Beds
Medical and Surgical Wards (excluding

GROUP I.—General Hospitals

HOSPITALS.	Beds reserved for Medical Cases.									Beds reserved		
	Male.			Female.			Cots.			Male.		
	Open.	Vacant.	Percentage of Open Beds Vacant.	Open.	Vacant.	Percentage of Open Beds Vacant.	Open.	Vacant.	Percentage of Open Beds Vacant.	Open.	Vacant.	Percentage of Open Beds Vacant.
1	2	3	4	5	6	7	8	9	10	11	12	13
			%			%			%			%
Charing Cross	42.0	2.0	4.8	55.0	2.0	3.6	20.0	4.0	20.0	49.0	5.0	10.2
Guy's	108.0	16.3	15.0	78.0	9.2	11.8	26.0	4.7	17.9	117.0	12.5	10.7
King's College	41.0	3.0	7.3	39.0	3.0	7.7	27.0	2.0	7.4	59.0	3.0	5.1
London	131.0	14.0	10.7	131.0	11.0	8.4	41.0	12.0	29.3	199.0	28.0	14.1
Middlesex... ..	47.8	2.4	5.0	58.9	3.7	6.3	11.5	2.1	18.4	73.0	3.3	4.5
Royal Free	25.5	0.5	2.0	33.6	1.6	4.8	16.5	0.5	3.0	32.5	4.5	13.9
St. Bartholomew's§	109.3	2.4	2.2	110.7	13.0	11.8	(a)	—	—	125.3	19.0	15.2
St. George's	46.0	4.7	10.2	46.7	3.2	6.9	10.2	1.3	12.8	71.0	7.8	11.0
St. Mary's	55.9	4.8	8.7	63.0	4.1	6.4	15.6	1.6	10.3	70.2	2.2	3.2
St. Thomas's	88.3	5.2	5.9	87.9	6.8	7.7	16.5	1.3	8.2	101.0	4.5	4.4
University College	75.7	2.9	3.8	92.0	5.0	5.4	32.8	2.8	8.5	89.8	5.4	6.0
Westminster	33.0	0.5	1.5	39.0	1.0	2.6	12.4	0.4	2.9	47.0	0.0	0.0
Totals and Group Averages	803.5	58.7	7.3	834.8	63.6	7.5	229.5	32.7	14.3	1,033.8	95.2	9.2

(a) Cots are in Adults' Wards

GROUP II.—General Hospitals without Medical Schools

HOSPITALS.	Beds reserved for Medical Cases.									Beds reserved		
	Male.			Female.			Cots.			Male.		
	Open.	Vacant.	Percentage of Open Beds Vacant.	Open.	Vacant.	Percentage of Open Beds Vacant.	Open.	Vacant.	Percentage of Open Beds Vacant.	Open.	Vacant.	Percentage of Open Beds Vacant.
1	2	3	4	5	6	7	8	9	10	11	12	13
			%			%			%			%
German	23.0	1.6	7.0	27.0	2.0	7.4	13.0	1.0	7.7	34.0	3.0	8.8
London Homœopathic	15.0	2.0	13.3	43.2	4.2	9.7	21.0	5.0	24.0	15.0	3.0	20.0
Miller	19.7	1.2	6.0	19.7	1.7	8.9	12.0	0.0	0.0	30.6	1.1	3.7
Prince of Wales's	27.1	2.8	10.3	27.1	2.9	10.6	17.0	2.4	14.4	46.3	3.6	7.7
Queen Mary's	24.1	0.8	3.0	25.0	1.3	5.3	20.0	1.9	9.6	20.0	0.4	2.2
Royal Northern	41.2	4.3	10.5	68.6	5.8	8.4	32.7	7.1	21.7	35.0	0.5	1.4
Seamen's (Dreadnought)	120.0	36.0	30.0	3.0	1.0	33.3	5.0	0.0	0.0	96.0	10.0	10.4
West London	23.8	2.0	8.4	24.6	1.9	7.7	13.9	1.0	7.2	45.6	2.0	4.4
Totals and Group Averages	293.9	50.7	17.2	238.2	20.8	8.8	134.6	18.4	13.7	322.5	23.6	7.3

§ See notes on pages 53 to 55.

allocated to Men, Women and Children in the Maternity and Gynæcological Beds).

SECTION C.

with Medical Schools.

for Surgical Cases.						Totals.									HOSPITALS.	
Female.			Cots.			Male.			Female.			Cots.				
Open.	Vacant.	Percentage of Open Beds Vacant.	Open.	Vacant.	Percentage of Open Beds Vacant.	Open.	Vacant.	Percentage of Open Beds Vacant.	Open.	Vacant.	Percentage of Open Beds Vacant.	Open.	Vacant.	Percentage of Open Beds Vacant.		
14	15	16	17	18	19	20	21	22	23	24	25	26	27	28		
		%			%			%			%			%		
43.0	4.0	9.3	1.0	1.0	100.0	91.0	7.0	7.7	98.0	6.0	6.1	21.0	5.0	23.8	Charing Cross	
98.0	10.2	10.4	23.0	4.8	21.1	225.0	28.8	12.8	176.0	19.4	11.0	49.0	9.5	19.4	Guy's	
53.0	5.0	9.4	24.0	5.0	20.8	100.0	6.0	6.0	92.0	8.0	8.7	51.0	7.0	13.7	King's College	
145.0	22.0	15.2	42.0	13.0	31.0	330.0	42.0	12.7	276.0	33.0	12.0	83.0	25.0	30.1	London	
77.1	4.8	6.2	11.2	3.0	26.9	120.8	5.7	4.7	136.0	8.5	6.2	22.7	5.1	22.6	Middlesex	
40.6	4.6	11.3	12.5	1.5	12.0	58.0	5.0	8.6	74.2	6.2	8.4	29.0	2.0	6.9	Royal Free	
112.8	24.3	21.6	(a)	—	—	234.6	21.4	9.1	223.5	37.3	16.7	(a)	—	—	St. Bartholomew's	
72.7	6.9	9.5	5.6	1.9	33.5	117.0	12.5	10.7	119.4	10.1	8.5	15.8	3.2	20.1	St. George's	
75.7	6.7	8.9	11.5	1.5	12.9	126.1	7.0	5.6	138.7	10.8	7.7	27.1	3.1	11.4	St. Mary's	
100.0	7.9	7.9	16.7	1.1	6.8	189.3	9.7	5.1	187.9	14.7	7.8	33.2	2.4	7.5	St. Thomas's	
85.1	5.6	6.6	25.0	3.6	14.4	165.5	8.3	5.0	177.1	10.6	6.0	57.8	6.4	11.1	University College	
53.0	2.0	3.8	6.0	0.0	0.0	80.0	0.5	0.6	92.0	3.0	3.3	18.4	0.4	2.0	Westminster	
956.0	104.0	10.9	178.5	36.4	20.4	1,837.3	153.9	8.4	1,790.8	167.6	9.4	408.0	69.1	17.0	Totals and Group Averages	

and are not separately recorded.

having a complement of 150 beds or over.

for Surgical Cases.						Totals.									HOSPITALS.
Female.			Cots.			Male.			Female.			Cots.			
Open.	Vacant.	Percentage of Open Beds Vacant.	Open.	Vacant.	Percentage of Open Beds Vacant.	Open.	Vacant.	Percentage of Open Beds Vacant.	Open.	Vacant.	Percentage of Open Beds Vacant.	Open.	Vacant.	Percentage of Open Beds Vacant.	
14	15	16	17	18	19	20	21	22	23	24	25	26	27	28	
18.0	1.0	% 5.6	10.0	1.0	% 10.0	57.0	4.6	% 8.1	45.0	3.0	% 6.7	23.0	2.0	% 8.7	German
23.9	2.9	12.0	10.0	3.0	30.0	30.0	5.0	16.7	67.1	7.1	10.6	31.0	8.0	25.9	London
22.8	0.8	3.5	12.0	1.4	11.4	50.3	2.3	4.6	42.5	2.5	6.0	24.0	1.4	5.7	Homœopathic Miller
34.1	2.9	8.5	18.0	2.2	12.5	73.4	6.4	8.7	61.2	5.8	9.4	35.0	4.6	13.4	Prince of Wales'
18.0	0.1	0.7	26.0	4.2	16.2	44.1	1.2	2.6	43.0	1.4	3.4	46.0	6.1	13.3	Queen Mary's
36.5	0.6	1.6	10.3	0.4	3.9	76.2	4.8	6.3	105.1	6.4	6.1	43.0	7.5	17.4	Royal
4.0	1.0	25.0	2.0	1.0	50.0	216.0	46.0	21.3	7.0	2.0	28.6	7.0	1.0	14.3	Northern Seamen's (Dreadnought)
40.8	3.0	7.4	9.9	1.0	10.1	69.4	4.0	5.8	65.4	4.9	7.5	23.8	2.0	8.4	West London
198.1	12.3	6.2	98.2	14.2	14.5	616.4	74.3	12.1	436.3	33.1	7.6	232.8	32.6	14.1	Totals and GroupAverages

SECTION C.

Analysis showing the relative incidence of Vacancy in
Medical and Surgical Wards (excluding

GROUP III.—General Hospitals having

HOSPITALS.	Beds reserved for Medical Cases.									Beds reserved for Surgical Cases.								
	Male.			Female.			Cots.			Male.			Female.			Cots.		
	Open.	Vacant	Percent- age of Open Beds Vacant.	Open.	Vacant	Percent- age of Open Beds Vacant.	Open.	Vacant	Percent- age of Open Beds Vacant.	Open.	Vacant	Percent- age of Open Beds Vacant.	Open.	Vacant	Percent- age of Open Beds Vacant.	Open.	Vacant	Percent- age of Open Beds Vacant.
	2	3	4	5	6	7	8	9	10	11	12	13	14	15	16	17	18	19
1	2	3	4	5	6	7	8	9	10	11	12	13	14	15	16	17	18	19
Bolingbroke	14.0	0.4	%	14.7	0.4	%	6.8	2.0	%	24.4	0.2	%	25.3	0.4	%	8.9	2.5	%
Connaught	10.0	0.4	4.0	11.0	2.3	20.9	14.0	1.8	13.1	14.0	0.5	3.6	14.0	0.8	5.9	10.0	1.7	8.9
Croydon	18.5	1.7	9.2	18.7	0.9	4.8	9.6	2.3	24.0	29.5	2.4	8.1	29.1	0.7	2.4	15.2	2.1	13.8
East Ham §	—	—	—	—	—	—	—	—	—	—	—	—	—	New	Hospital.	Allocation of	wards	
French	11.0	2.0	18.2	11.0	0.0	0.0	2.0	2.0	100.0	20.0	3.0	15.0	15.0	2.0	13.3	2.0	1.0	50.0
Hampstead	14.0	1.5	10.9	17.0	0.3	1.7	9.7	1.3	13.0	16.0	0.3	1.9	26.0	2.8	10.8	9.7	1.2	11.8
Hospital of St. John and St. Elizabeth	15.4	3.0	19.2	21.3	2.1	10.0	5.5	1.2	21.8	16.2	2.4	14.5	22.2	2.0	9.2	5.6	1.3	23.2
King Edward's Memorial (Baling)	14.0	0.5	3.6	14.0	0.3	2.5	6.9	3.0	43.1	21.0	2.5	11.9	15.0	1.7	11.3	6.8	0.8	12.4
London Jewish	19.2	1.0	5.3	23.7	1.1	4.8	9.1	0.5	5.5	21.3	3.2	15.2	19.5	2.1	10.6	2.4	0.1	5.8
London Temperance	16.1	0.3	2.0	23.6	0.1	0.4	8.0	1.5	18.8	30.0	2.6	8.8	33.3	5.1	15.3	8.0	1.7	20.6
Metropolitan	30.0	3.0	10.1	30.0	4.0	13.4	9.0	1.0	11.1	28.0	3.0	10.8	22.0	2.0	9.1	8.0	1.0	12.5
Poplar	9.8	1.7	17.7	9.8	1.8	18.3	12.8	3.2	25.0	44.3	6.1	13.8	19.7	3.0	15.4	11.8	1.0	16.1
Royal (Richmond)	—	—	—	—	—	—	—	—	—	—	—	—	—	—	—	—	—	—
St. John's (Lewisham)	10.1	1.6	16.0	8.7	2.0	22.7	8.8	(0.04)	0.5	22.3	2.4	10.9	20.4	1.7	8.2	14.1	3.1	21.7
Willesden	—	—	—	—	—	—	—	—	—	—	—	—	—	—	—	—	—	—
Wimbledon	—	—	—	—	—	—	—	—	—	—	—	—	—	—	—	—	—	—
Woolwich War Memorial	9.8	0.6	6.4	18.0	1.5	8.1	11.5	1.0	8.7	20.0	0.6	3.1	18.0	1.4	7.8	5.8	0.5	8.7
Totals and Group Averages	191.9	17.7	9.3	221.5	16.8	7.6	113.7	21.7	19.1	307.0	29.2	9.5	279.5	25.7	9.2	117.3	18.9	16.1

GROUP IV.—General Hospitals having a complement

HOSPITALS.	Beds reserved for Medical Cases.									Beds reserved for Surgical Cases.								
	Male.			Female.			Cots.			Male.			Female.			Cots.		
	Open.	Vacant	Percent- age of Open Beds Vacant.	Open.	Vacant	Percent- age of Open Beds Vacant.	Open.	Vacant	Percent- age of Open Beds Vacant.	Open.	Vacant	Percent- age of Open Beds Vacant.	Open.	Vacant	Percent- age of Open Beds Vacant.	Open.	Vacant	Percent- age of Open Beds Vacant.
	2	3	4	5	6	7	8	9	10	11	12	13	14	15	16	17	18	19
1	2	3	4	5	6	7	8	9	10	11	12	13	14	15	16	17	18	19
Acton	—	—	—	—	—	—	—	—	—	—	—	—	—	—	—	—	—	—
Italian	—	—	—	—	—	—	—	—	—	—	—	—	—	—	—	—	—	—
Kensington, Fulham and Chelsea	—	—	—	—	—	—	Closed for re-building			—	—	—	—	—	—	—	—	—
King George, Ilford	—	—	—	—	—	—	—	—	—	—	—	—	—	—	—	—	—	—
Mildmay Mission	—	—	—	—	—	—	—	—	—	—	—	—	—	—	—	—	—	—
Nelson	—	—	—	—	—	—	—	—	—	—	—	—	—	—	—	—	—	—
Seamen's (Docks)	25.0	3.0	12.0	—	—	—	—	—	—	28.0	5.0	17.9	—	—	—	—	—	—
Weir	—	—	—	—	—	—	—	—	—	—	—	—	—	—	—	—	—	—
Totals and Group Averages	25.0	3.0	12.0	—	—	—	—	—	—	28.0	5.0	17.9	—	—	—	—	—	—

§ See notes on pages 53 to 55.

Beds allocated to Men, Women and Children in the Maternity and Gynaecological Beds.)

SECTION C.

a complement of 70 to 149 Beds.

Complement of 100 Beds.

Beds reserved for either Medical or Surgical Cases.									Totals.									HOSPITALS.
Male.			Female.			Cots.			Male.			Female.			Cots.			
Open.	Vacant	Percent- age of Open Beds Vacant.	Open.	Vacant	Percent- age of Open Beds Vacant.	Open.	Vacant	Percent- age of Open Beds Vacant.	Open.	Vacant	Percent- age of Open Beds Vacant.	Open.	Vacant	Percent- age of Open Beds Vacant.	Open.	Vacant	Percent- age of Open Beds Vacant.	
20	21	22	23	24	25	26	27	28	29	30	31	32	33	34	35	36	37	
—	—	%	—	—	%	—	—	%	38.4	0.6	1.4	40.0	0.8	1.9	15.7	5.4	34.4	Bolingbroke
—	—	—	—	—	—	—	—	—	24.0	0.9	3.8	25.0	3.1	12.5	33.0	3.5	10.7	Connaught
—	—	—	—	—	—	—	—	—	48.0	4.1	8.5	47.8	1.6	3.4	24.8	4.4	17.7	Croydon
varied throughout the year.									—	—	—	—	—	—	—	—	—	East Ham
—	—	—	—	—	—	—	—	—	31.0	5.0	16.1	26.0	2.0	7.7	4.0	3.0	75.0	French
—	—	—	—	—	—	—	—	—	30.0	1.8	6.1	43.0	3.1	7.2	19.4	2.5	12.4	Hampstead
—	—	—	—	—	—	—	—	—	31.6	5.4	16.8	43.5	4.1	9.6	11.1	2.5	22.5	Hospital of St. John and St. Elizabeth
—	—	—	—	—	—	—	—	—	35.0	3.0	8.6	29.0	2.0	7.1	13.7	3.8	27.7	King Edward's Memorial (Ealing)
—	—	—	—	—	—	—	—	—	40.5	4.2	10.5	43.2	3.2	7.4	11.5	0.6	5.6	London Jewish
—	—	—	—	—	—	—	—	—	46.1	2.0	6.4	56.9	5.2	9.1	16.0	3.2	19.7	London Temperance
—	—	—	—	—	—	—	—	—	58.0	6.0	10.4	52.0	6.0	11.6	17.0	2.0	11.8	Metropolitan
—	—	—	—	—	—	—	—	—	54.1	7.8	14.5	29.5	4.8	16.4	24.6	5.1	20.7	Poplar
32.0	4.7	14.6	34.0	3.2	9.4	16.0	1.8	11.3	32.0	4.7	14.6	34.0	3.2	9.4	16.0	1.8	11.3	Royal (Richmond)
—	—	—	—	—	—	—	—	—	32.4	4.0	12.5	29.1	3.7	12.5	22.0	3.1	13.6	St. John's (Lewisham)
26.0	1.7	6.6	39.0	3.8	9.7	20.5	3.7	18.2	26.0	1.7	6.6	39.0	3.8	9.7	20.5	3.7	18.2	Willesden
17.0	2.0	11.8	26.0	7.0	26.9	15.5	4.0	25.7	17.0	2.0	11.8	26.0	7.0	26.9	15.5	4.0	25.7	Wimbledon
—	—	—	—	—	—	—	—	—	29.8	1.2	4.2	36.0	2.9	7.9	17.3	1.5	8.7	Woolwich War Memorial
75.0	8.4	11.2	99.0	14.0	14.1	52.0	9.5	18.3	573.9	55.3	9.7	600.0	56.5	9.4	283.0	50.1	17.7	Totals and Group Averages

under 70 Beds with a Resident Medical Officer.

Beds reserved for either Medical or Surgical Cases.									Totals.									HOSPITALS.
Male.			Female.			Cots.			Male.			Female.			Cots.			
Open.	Vacant	Percent age of Open Beds Vacant.	Open.	Vacant	Percent age of Open Beds Vacant.	Open.	Vacant	Percent age of Open Beds Vacant.	Open.	Vacant	Percent age of Open Beds Vacant.	Open.	Vacant	Percent age of Open Beds Vacant.	Open.	Vacant	Percent age of Open Beds Vacant.	
20	21	22	23	24	25	26	27	28	29	30	31	32	33	34	35	36	37	
13.0	0.0	0.0	17.3	0.6	3.6	14.3	4.2	29.5	13.0	0.0	0.0	17.3	0.6	3.6	14.3	4.2	29.5	Acton
24.0	7.0	29.2	28.0	9.0	32.1	5.0	2.0	40.0	24.0	7.0	29.2	28.0	9.0	32.1	5.0	2.0	40.0	Italian
—	—	—	—	—	—	Closed for re-building.			—	—	—	—	—	—	—	—	—	Kensington, Fulham and Chelsea
14.0	0.5	3.6	14.0	0.2	1.1	18.7	0.4	2.4	14.0	0.5	3.6	14.0	0.2	1.1	18.7	0.4	2.4	King George, Ilford
15.1	1.7	11.4	16.0	0.5	3.1	21.8	5.9	26.9	15.1	1.7	11.4	16.0	0.5	3.1	21.8	5.9	26.9	Mildmay Mission
17.9	2.8	15.3	18.0	2.5	13.9	11.6	2.2	19.1	17.9	2.8	15.3	18.0	2.5	13.9	11.6	2.2	19.1	Nelson
—	—	—	—	—	—	—	—	—	53.0	8.0	15.1	—	—	—	—	—	—	Seamen's (Docks)
10.0	0.6	6.0	13.0	2.1	16.4	3.0	0.8	25.0	10.0	0.6	6.0	13.0	2.1	16.4	3.0	0.8	25.0	Weir
94.0	12.6	13.4	106.3	14.9	14.0	74.4	15.5	20.8	147.0	20.6	14.0	106.3	14.9	14.0	74.4	15.5	20.8	Totals and Group Averages

SECTION C.

Analysis showing the relative incidence of Vacancy in
Medical and Surgical Wards (excluding

GROUP V.—General and Cottage Hospitals having a

HOSPITALS.	Beds reserved for Medical Cases.									Beds reserved for Surgical Cases.								
	Male.			Female.			Cots.			Male.			Female.			Cots.		
	Open.	Vacant.	Percentage of Open Beds Vacant.	Open.	Vacant.	Percentage of Open Beds Vacant.	Open.	Vacant.	Percentage of Open Beds Vacant.	Open.	Vacant.	Percentage of Open Beds Vacant.	Open.	Vacant.	Percentage of Open Beds Vacant.	Open.	Vacant.	Percentage of Open Beds Vacant.
1	2	3	4	5	6	7	8	9	10	11	12	13	14	15	16	17	18	19
			%			%			%			%			%			%
Beckenham	—	—	—	—	—	—	—	—	—	—	—	—	—	—	—	—	—	—
Blackheath & Charlton	—	—	—	—	—	—	—	—	—	—	—	—	—	—	—	—	—	—
Bromley	—	—	—	—	—	—	—	—	—	—	—	—	—	—	—	—	—	—
Carshalton	—	—	—	—	—	—	—	—	—	6·0	0·0	0·0	12·0	1·0	8·3	3·0	2·0	66·7
Enfield	—	—	—	—	—	—	—	—	—	—	—	—	—	—	—	—	—	—
Finchley	—	—	—	—	—	—	—	—	—	—	—	—	—	—	—	—	—	—
Forest	—	—	—	—	—	—	—	—	—	—	—	—	—	—	—	—	—	—
Harrow	—	—	—	—	—	—	—	—	—	—	—	—	—	—	—	—	—	—
Hendon	—	—	—	—	—	—	—	—	—	—	—	—	—	—	—	—	—	—
Hornsey	—	—	—	—	—	—	—	—	—	—	—	—	—	—	—	—	—	—
Mildmay Memorial ...	—	—	—	—	—	—	—	—	—	—	—	—	—	—	—	—	—	—
Norwood	—	—	—	—	—	—	—	—	—	—	—	—	—	—	—	—	—	—
Passmore Edwards (Wood Green)	—	—	—	—	—	—	—	—	—	—	—	—	—	—	—	—	—	—
Victoria (Barnet) ...	8·0	3·4	38·2	13·8	2·5	18·3	3·8	2·5	65·8	—	—	—	—	—	—	—	—	—
Woodford Jubilee ...	—	—	—	—	—	—	—	—	—	—	—	—	—	—	—	—	—	—
Totals and Group Averages ...	8·0	3·4	38·2	13·8	2·5	18·3	3·8	2·5	65·8	6·0	0·0	0·0	12·0	1·0	8·3	3·0	2·0	66·7

**GROUP VI.—General and Cottage Hospitals having a complement under 30 Beds
without a Resident Medical Officer.**

HOSPITALS.	Beds reserved for either Medical or Surgical Cases.								
	Male.			Female.			Cots.		
	Open.	Vacant.	Percentage of Open Beds Vacant.	Open.	Vacant.	Percentage of Open Beds Vacant.	Open.	Vacant.	Percentage of Open Beds Vacant.
1	2	3	4	5	6	7	8	9	10
			%			%			%
Eltham and Mottingham ..	6·0	1·6	27·0	6·0	1·6	27·0	10·0	2·7	26·9
Hanwell	6·0	2·6	43·3	6·0	0·1	2·0	3·0	(0·03)	1·0
Kingston Victoria	10·7	4·4	41·1	11·5	3·6	31·5	—	—	—
Phillips Memorial Homœopathic ..	3·7	2·7	72·8	8·0	4·0	50·0	4·0	2·3	57·5
St. John's (Twickenham) ..	6·5	1·4	21·7	6·5	1·4	21·7	4·6	1·5	32·5
Wembley	7·0	1·0	14·3	8·0	0·0	0·0	5·4	1·4	25·9
Totals and Group Averages ..	39·9	13·7	34·4	46·0	10·7	23·4	27·0	7·9	29·3

**Beds allocated to Men, Women and Children in the
Maternity and Gynæcological Beds.)**

SECTION C.

complement of 30 Beds or over, without a Resident Medical Officer.

Beds reserved for either Medical or Surgical Cases.									Totals.									HOSPITALS.
Male.			Female.			Cots.			Male.			Female.			Cots.			
Open.	Vacant.	Percentage of Open Beds Vacant.	Open.	Vacant.	Percentage of Open Beds Vacant.	Open.	Vacant.	Percentage of Open Beds Vacant.	Open.	Vacant.	Percentage of Open Beds Vacant.	Open.	Vacant.	Percentage of Open Beds Vacant.	Open.	Vacant.	Percentage of Open Beds Vacant.	
20	21	22	23	24	25	26	27	28	29	30	31	32	33	34	35	36	37	
16.5	2.9	17.6	16.5	2.9	17.4	4.0	1.8	45.8	16.5	2.9	17.6	16.5	2.9	17.4	4.0	1.8	45.8	Beckenham
13.1	5.0	38.0	13.0	0.9	7.0	—	—	—	13.1	5.0	38.0	13.0	0.9	7.0	—	—	—	Blackheath & Charlton
13.0	4.0	30.8	13.0	2.0	15.4	8.0	6.0	75.0	13.0	4.0	30.8	13.0	2.0	15.4	8.0	6.0	75.0	Bromley
—	—	—	—	—	—	—	—	—	6.0	0.0	0.0	12.0	1.0	8.3	3.0	2.0	66.7	Carshalton
13.8	2.2	16.3	16.0	0.0	0.0	20.0	6.2	30.9	13.8	2.2	16.3	16.0	0.0	0.0	20.0	6.2	30.9	Enfield
10.0	0.6	6.0	15.8	1.6	10.2	11.9	3.6	29.8	10.0	0.6	6.0	15.8	1.6	10.2	11.9	3.6	29.8	Finchley
13.4	3.4	25.5	13.4	5.4	40.2	1.9	0.4	18.9	13.4	3.4	25.5	13.4	5.4	40.2	1.9	0.4	18.9	Forest
11.0	(0.05)	0.5	16.0	2.3	14.4	12.0	2.6	21.3	11.0	(0.05)	0.5	16.0	2.3	14.4	12.0	2.6	21.3	Harrow
22.0	5.4	24.3	23.0	5.2	22.6	—	—	—	22.0	5.4	24.3	23.0	5.2	22.6	—	—	—	Hendon
8.0	2.2	27.8	14.0	1.7	12.0	10.0	5.7	57.4	8.0	2.2	27.8	14.0	1.7	12.0	10.0	5.7	57.4	Hornsey
11.8	3.5	29.8	11.7	1.2	10.7	2.0	1.1	55.0	11.8	3.5	29.8	11.7	1.2	10.7	2.0	1.1	55.0	Mildmay Memorial
13.7	3.1	22.4	14.0	3.1	22.4	—	—	—	13.7	3.1	22.4	14.0	3.1	22.4	—	—	—	Norwood
23.0	6.1	26.7	29.0	5.3	18.1	(a)	—	—	23.0	6.1	26.7	29.0	5.3	18.1	(a)	—	—	Passmore Edwards (Wood Green)
—	—	—	—	—	—	—	—	—	8.9	3.4	38.2	13.8	2.5	18.3	3.8	2.5	65.8	Victoria (Barnet)
10.0	2.3	23.0	10.0	1.8	18.0	5.0	2.8	56.0	10.0	2.3	23.0	10.0	1.8	18.0	5.0	2.8	56.0	Woodford Jubilee
179.3	40.7	22.8	205.4	33.4	16.3	74.8	30.2	40.2	194.2	44.1	22.8	231.2	36.9	16.0	81.6	34.7	42.4	Totals and Group Averages.

(a) Included under Female, separate statistics not being available.

GROUP VII.—Hospitals for Women.

GROUP VIII.—Children's Hospitals.

GROUP IX.—Children's (Long Period) Hospitals.

As the Analysis into Male, Female and Cots does not apply to the Hospitals in the above Groups, the individual figures, which are those shown in Section B, are omitted. The Group figures are included in the Summary of this Section (page 50) for comparison with the Female Beds and Cots respectively in other groups.

GROUP X.—Maternity Hospitals.

As Maternity Beds do not come within the Analysis made in this Section, this Group is omitted.

SECTION C.

Analysis showing the relative incidence of Vacancy in
Medical and Surgical Wards (excluding

GROUP XI.—

HOSPITALS.	Beds reserved for Surgical Cases.									Beds reserved		
	Male.			Female.			Cots.			Male.		
	Open.	Vacant.	Percentage of Open Beds Vacant.	Open.	Vacant.	Percentage of Open Beds Vacant.	Open.	Vacant.	Percentage of Open Beds Vacant.	Open.	Vacant.	Percentage of Open Beds Vacant.
	2	3	4	5	6	7	8	9	10	11	12	13
1												
Central London	18·0	6·2	34·6	17·0	3·6	20·9	2·0	1·4	68·5	—	—	—
Royal Eye	—	—	—	—	—	—	—	—	—	19·8	3·4	17·3
Royal London	54·0	1·1	2·1	45·4	2·2	4·8	11·0	2·8	25·1	—	—	—
Royal Westminster	—	—	—	—	—	—	—	—	—	20·9	2·9	13·9
Western	6·0	0·2	3·3	10·0	0·2	2·0	2·0	0·3	15·0	—	—	—
Totals and Group Averages	78·0	7·5	9·7	72·4	6·0	8·2	15·0	4·5	29·5	40·7	6·3	15·6

GROUP XII.—Hospitals for

HOSPITALS.	Beds reserved for Medical Cases.									Beds reserved		
	Male.			Female.			Cots.			Male.		
	Open.	Vacant.	Percentage of Open Beds Vacant.	Open.	Vacant.	Percentage of Open Beds Vacant.	Open.	Vacant.	Percentage of Open Beds Vacant.	Open.	Vacant.	Percentage of Open Beds Vacant.
	2	3	4	5	6	7	8	9	10	11	12	13
1												
Hospital for Epilepsy and Paralysis ...	—	—	%	—	—	%	—	—	%	33·9	0·8	2·4
National, Queen Square	97·3	5·5	5·6	86·9	4·7	5·4	—	—	—	—	—	—
West End§	24·0	0·0	0·0	27·0	0·6	2·4	25·0	0·1	0·3	—	—	—
Totals and Group Averages	121·3	5·5	4·5	113·9	5·3	4·7	25·0	0·1	0·3	33·9	0·8	2·4

GROUP XIII.—Throat,

HOSPITALS.	Beds reserved		
	Male.		
	Open.	Vacant.	Percentage of Open Beds Vacant.
	2	3	4
1			
Central London	12·4	1·9	15·3
Golden Square	30·9	4·6	14·9
Metropolitan	11·0	3·6	32·8
Totals and Group Averages	54·3	10·1	18·7

§ See notes on pages 53 to 55.

Beds allocated to Men, Women and Children in the Maternity and Gynæcological Beds).

SECTION C.

Ophthalmic Hospitals.

for either Medical or Surgical Cases.						Totals.									HOSPITALS
Female.			Cots.			Male.			Female.			Cots.			
Open.	Vacant.	Percent- age of Open Beds Vacant.	Open.	Vacant.	Percent- age of Open Beds Vacant.	Open.	Vacant.	Percent- age of Open Beds Vacant.	Open.	Vacant.	Percent- age of Open Beds Vacant.	Open.	Vacant.	Percent- age of Open Beds Vacant.	
14	15	16	17	18	19	20	21	22	23	24	25	26	27	28	29
—	—	%	—	—	%	18.0	6.2	34.6	17.0	3.6	20.9	2.0	1.4	68.5	Central London
21.6	2.7	12.2	1.9	0.4	21.9	19.8	3.4	17.3	21.6	2.7	12.2	1.9	0.4	21.9	Royal Eye
—	—	—	—	—	—	54.0	1.1	2.1	45.4	2.2	4.8	11.0	2.8	25.1	Royal London
26.0	4.4	17.1	5.2	1.6	31.0	20.9	2.9	13.9	26.0	4.4	17.1	5.2	1.6	31.0	Royal Westminster
—	—	—	—	—	—	6.0	0.2	3.3	10.0	0.2	2.0	2.0	0.3	15.0	Western
47.6	7.1	14.9	7.1	2.0	28.5	118.7	13.8	11.7	120.0	13.1	10.8	22.1	6.5	29.2	Totals and Group Averages

Disorders of the Nervous System.

for either Medical or Surgical Cases.						Totals.									HOSPITALS.
Female.			Cots.			Male.			Female.			Cots.			
Open.	Vacant.	Percent- age of Open Beds Vacant.	Open.	Vacant.	Percent- age of Open Beds Vacant.	Open.	Vacant.	Percent- age of Open Beds Vacant.	Open.	Vacant.	Percent- age of Open Beds Vacant.	Open.	Vacant.	Percent- age of Open Beds Vacant.	
14	15	16	17	18	19	20	21	22	23	24	25	26	27	28	
		%			%			%			%			%	
41·8	0·2	0·6	6·0	0·8	13·0	33·9	0·8	2·4	41·8	0·2	0·6	6·0	0·8	13·0	Hosp. for Epilepsy and Paralysis National, Queen Square West End
—	—	—	—	—	—	97·3	5·5	5·6	86·9	4·7	5·4	—	—	—	
—	—	—	—	—	—	24·0	0·0	0·0	27·0	0·6	2·4	25·0	0·1	0·3	
41·8	0·2	0·6	6·0	0·8	13·0	155·2	6·3	4·0	155·7	5·5	3·6	31·0	0·9	2·8	Totals and Group Averages

Nose, and Ear Hospitals.

for Surgical Cases.						HOSPITALS.
Female.			Cots.			
Open.	Vacant.	Percentage of Open Beds Vacant.	Open.	Vacant.	Percentage of Open Beds Vacant.	
5	6	7	8	9	10	
17·4	3·5	20·4	11·1	1·1	9·5	Central London
30·9	3·4	11·1	9·0	0·0	0·0	Golden Square
9·1	1·7	19·1	—	—	—	Metropolitan
57·4	8·6	15·2	20·1	1·1	5·2	Totals and Group Averages

SECTION C.

Analysis showing the relative incidence of Vacancy in
Medical and Surgical Wards (excluding

GROUP XIV.—Unclassified Special

HOSPITALS.	Beds reserved for Medical Cases.									Beds reserved for Surgical Cases.								
	Male.			Female.			Cots.			Male.			Female.			Cots.		
	Open.	Vacant.	Percentage of Open Beds Vacant.	Open.	Vacant.	Percentage of Open Beds Vacant.	Open.	Vacant.	Percentage of Open Beds Vacant.	Open.	Vacant.	Percentage of Open Beds Vacant.	Open.	Vacant.	Percentage of Open Beds Vacant.	Open.	Vacant.	Percentage of Open Beds Vacant.
	2	3	4	5	6	7	8	9	10	11	12	13	14	15	16	17	18	19
1	2	3	4	5	6	7	8	9	10	11	12	13	14	15	16	17	18	19
All Saints' (Gen.-Ur.) ...	—	—	%	—	—	%	—	—	%	23.0	3.1	13.4	5.0	0.6	12.2	—	—	%
City of London (Heart and Lungs)§	83.8	7.1	8.4	89.6	7.4	8.3	—	—	—	—	—	—	—	—	—	—	—	—
Florence Nightingale (Gentlewomen)	—	—	—	—	—	—	—	—	—	—	—	—	34.0	6.3	18.4	—	—	—
Gordon (Fistula, etc.) ...	—	—	—	—	—	—	—	—	—	—	—	—	Wards are not definitely reserved for	—	—	Male or Female	—	—
Hospital for Consumption (Brompton)	140.9	3.8	2.7	118.0	4.0	3.4	4.0	0.6	16.0	12.8	0.6	4.7	11.9	2.0	16.7	—	—	—
„ (Frimley)	74.6	2.6	3.5	74.6	3.6	4.8	—	—	—	—	—	—	—	—	—	—	—	—
Hostel of St. Luke (Clergy)	—	—	—	—	—	—	—	—	—	—	—	—	—	—	—	—	—	—
Infants'	—	—	—	—	—	—	—	—	—	—	—	—	—	—	—	—	—	—
Invalid and Crippled Children§	—	—	—	—	—	—	—	—	—	—	—	—	—	—	—	—	—	—
Inv. Chd. Aid Assn. (Heart Hospital)	—	—	—	—	—	—	79.8	4.8	6.0	—	—	—	—	—	—	—	—	—
London Fever	—	—	—	—	—	—	—	—	—	—	—	—	The nature of the	—	—	Hospital prevents the	—	—
London Lock (Female)	—	—	—	—	—	—	—	—	—	—	—	—	116.3	30.3	26.1	18.0	1.0	5.6
„ „ (Male)	—	—	—	—	—	—	—	—	—	26.0	6.0	23.1	—	—	—	—	—	—
Middlesex Cancer ...	—	—	—	—	—	—	—	—	—	38.0	6.7	17.8	51.5	2.4	4.6	—	—	—
Mount Vernon (Cancer)§	—	—	—	10.0	5.3	53.0	—	—	—	37.0	21.1	57.0	91.0	39.1	43.0	—	—	—
National Heart ...	15.0	0.3	1.9	31.0	1.5	5.0	—	—	—	—	—	—	—	—	—	—	—	—
Princess Louise, Kensington (Children)	—	—	—	—	—	—	20.6	0.8	3.8	—	—	—	—	—	—	19.6	2.7	13.7
Royal National Orthopaedic	—	—	—	—	—	—	—	—	—	55.0	2.7	4.9	67.1	0.2	0.3	30.6	0.8	2.5
„ „ (Stammore)	—	—	—	—	—	—	—	—	—	4.0	0.0	0.0	15.0	0.0	0.0	210.3	0.5	0.2
Royal Waterloo (Children and Women)	—	—	—	25.0	2.4	9.6	27.7	3.1	11.4	—	—	—	14.0	1.2	8.6	25.0	3.0	12.0
St. Andrew's, Dollis Hill (Middle Classes)	—	—	—	—	—	—	—	—	—	—	—	—	—	—	—	—	—	—
St. Columba's (Advanced Cases)	—	—	—	—	—	—	—	—	—	—	—	—	—	—	—	—	—	—
St. John's (Skin) ...	10.9	1.8	16.9	10.2	3.3	17.0	—	—	—	—	—	—	—	—	—	—	—	—
St. Luke's (Advanced Cases)	—	—	—	—	—	—	—	—	—	—	—	—	—	—	—	—	—	—
St. Mark's (Fistula, etc.)	—	—	—	—	—	—	—	—	—	38.9	0.8	2.1	21.0	1.0	4.6	—	—	—
St. Mary's, Plaistow (Women and Children)	—	—	—	—	—	—	—	—	—	—	—	—	—	—	—	—	—	—
St. Nicholas (Country branch of Cheyne: Children—long period)	—	—	—	—	—	—	—	—	—	—	—	—	—	—	—	—	—	—
St. Paul's (Gen.-Ur.)§...	—	—	—	—	—	—	—	—	—	22.0	1.0	4.4	—	—	—	—	—	—
St. Peter's (Stone) ...	—	—	—	—	—	—	—	—	—	27.1	1.0	3.5	2.0	0.1	5.0	—	—	—
St. Saviour's (Gentlewomen)	—	—	—	20.9	6.1	29.2	—	—	—	—	—	—	—	—	—	—	—	—
Seamen's (Trop. Dis.) ...	8.0	0.0	0.0	—	—	—	—	—	—	—	—	—	—	—	—	—	—	—
„ (Sanatorium, Liphook)	40.0	7.1	14.5	—	—	—	—	—	—	31.0	0.3	0.9	—	—	—	—	—	—
Stoke Newington (Women)	—	—	—	—	—	—	—	—	—	—	—	—	—	—	—	—	—	—
Totals and Group Averages.	382.2	22.7	5.9	388.3	33.6	8.7	132.1	9.3	7.1	314.8	43.3	13.7	428.8	83.2	19.4	303.5	8.0	2.6

§ See Notes on pages 53 to 55.

Beds allocated to Men, Women and Children in the
Maternity and Gynæcological Beds).

SECTION C.

Hospitals (not comparable).

Beds reserved for either Medical or Surgical Cases.									Totals.									HOSPITALS.
Male.			Female.			Cots.			Male.			Female.			Cots.			
Open.	Vacant.	Percent- age of Open Beds Vacant.	Open.	Vacant.	Percent- age of Open Beds Vacant.	Open.	Vacant.	Percent- age of Open Beds Vacant.	Open.	Vacant.	Percent- age of Open Beds Vacant.	Open.	Vacant.	Percent- age of Open Beds Vacant.	Open.	Vacant.	Percent- age of Open Beds Vacant.	
20	21	22	23	24	25	26	27	28	29	30	31	32	33	34	35	36	37	
		%			%			%			%			%			%	38
—	—	—	—	—	—	—	—	—	23.0	3.1	13.4	5.0	0.6	12.2	—	—	—	All Saints' (Gen.-Ur.)
—	—	—	—	—	—	—	—	—	83.8	7.1	8.4	89.6	7.4	8.3	—	—	—	City of London (Heart and Lungs)
—	—	—	—	—	—	—	—	—	—	—	—	34.0	6.3	18.4	—	—	—	Florence Nightingale (Gentlewomen)
cases, being used as required for either sex.																		Gordon (Fistula, etc.)
—	—	—	—	—	—	—	—	—	153.7	4.4	2.8	120.9	6.0	4.6	4.0	0.6	16.0	Hospital for Consumption (Brompton)
—	—	—	—	—	—	—	—	—	74.6	2.6	3.5	74.6	3.6	4.8	—	—	—	" " (Frimley)
10.8	0.3	3.0	15.1	0.4	3.0	2.9	0.1	2.4	10.8	0.3	3.0	15.1	0.4	3.0	2.9	0.1	2.4	Hostel of St. Luke (Clergy)
—	—	—	2.9	0.6	18.6	44.2	2.7	6.2	—	—	—	2.9	0.6	18.6	44.2	2.7	6.2	Infants'
—	—	—	—	—	—	21.1	6.5	30.8	—	—	—	—	—	—	21.1	6.5	30.8	Invalid and Crippled Children
—	—	—	—	—	—	—	—	—	—	—	—	—	—	—	79.8	4.8	6.0	Inv. Chd. Aid Assn. (Heart Hospital)
definite allocation of Wards.																		London Fever
—	—	—	—	—	—	—	—	—	—	—	—	116.3	30.3	26.1	18.0	1.0	5.6	London Lock (Female)
—	—	—	—	—	—	—	—	—	26.0	6.0	23.1	—	—	—	—	—	—	" " (Male)
—	—	—	—	—	—	—	—	—	38.0	6.7	17.8	51.5	2.4	4.0	—	—	—	Middlesex Cancer
—	—	—	—	—	—	—	—	—	37.0	21.1	57.0	101.0	44.4	44.0	—	—	—	Mount Vernon (Cancer)
—	—	—	—	—	—	—	—	—	15.0	0.3	1.9	31.0	1.5	5.0	—	—	—	National Heart
—	—	—	—	—	—	—	—	—	—	—	—	—	—	—	40.2	3.5	8.6	Princess Louise, Ken- sington (Children)
—	—	—	—	—	—	—	—	—	55.0	2.7	4.9	67.1	0.2	0.3	30.6	0.8	2.5	Royal National Ortho- pædic
—	—	—	—	—	—	—	—	—	4.0	0.0	0.0	15.0	0.0	0.0	210.3	0.5	0.2	" " (Stanmore)
—	—	—	—	—	—	—	—	—	—	—	—	39.0	3.0	9.2	52.7	6.1	11.7	Royal Waterloo (Children and Women)
20.0	0.0	0.0	26.7	0.0	0.0	—	—	—	20.0	0.0	0.0	26.7	0.0	0.0	—	—	—	St. Andrew's, Dollis Hill (Middle Classes)
16.0	3.7	23.0	30.0	6.9	23.2	4.0	3.2	80.3	16.0	3.7	23.0	30.0	6.9	23.2	4.0	3.2	80.3	St. Columba's (Advanced Cases)
—	—	—	—	—	—	—	—	—	10.9	1.8	16.9	19.2	3.3	17.0	—	—	—	St. John's (Skin)
13.0	1.8	14.0	32.3	2.4	7.4	—	—	—	13.0	1.8	14.0	32.3	2.4	7.4	—	—	—	St. Luke's (Advanced Cases)
—	—	—	—	—	—	—	—	—	38.9	0.8	2.1	21.0	1.0	4.6	—	—	—	St. Mark's (Fistula, etc.)
—	—	—	12.6	0.2	1.3	42.7	1.4	3.3	—	—	—	12.6	0.2	1.3	42.7	1.4	3.3	St. Mary's, Plaistow (Women and Children)
—	—	—	—	—	—	33.0	0.2	0.6	—	—	—	—	—	—	33.0	0.2	0.6	St. Nicholas (Country branch of Cheyne: Children—long period)
—	—	—	—	—	—	—	—	—	22.0	1.0	4.4	—	—	—	—	—	—	St. Paul's (Gen.-Ur.)
—	—	—	—	—	—	—	—	—	27.1	1.0	3.5	2.0	0.1	5.0	—	—	—	St. Peter's (Stone)
—	—	—	—	—	—	—	—	—	—	—	—	20.9	6.1	29.2	—	—	—	St. Saviour's (Gentle- women)
—	—	—	—	—	—	—	—	—	8.0	0.0	0.0	—	—	—	—	—	—	Seamen's (Trop. Dis.)
—	—	—	—	—	—	—	—	—	80.0	7.4	9.2	—	—	—	—	—	—	" (Sanatorium, Liphook)
—	—	—	23.1	6.1	26.3	—	—	—	—	—	—	23.1	6.1	26.3	—	—	—	Stoke Newington (Women)
59.8	5.8	9.7	142.7	16.6	11.6	147.9	14.1	9.5	756.8	71.8	9.5	959.8	133.4	13.9	583.5	31.4	5.4	Totals and Group Averages

SECTION C.

Analysis showing the relative incidence of Vacancy in
Medical and Surgical Wards (excluding

SUMMARY OF

GROUPS.	Beds reserved for Medical Cases.									Beds reserved for Surgical Cases.								
	Male.			Female.			Cots.			Male.			Female.			Cots.		
	Average Number of Beds.		Per-centage of Open Beds Vacant.	Average Number of Beds.		Per-centage of Open Beds Vacant.	Average Number of Beds.		Per-centage of Open Beds Vacant.	Average Number of Beds.		Per-centage of Open Beds Vacant.	Average Number of Beds.		Per-centage of Open Beds Vacant.	Average Number of Beds.		Per-centage of Open Beds Vacant.
	Open.	Vacant.		Open.	Vacant.		Open.	Vacant.		Open.	Vacant.		Open.	Vacant.		Open.	Vacant.	
1	2	3	4	5	6	7	8	9	10	11	12	13	14	15	16	17	18	19
			%			%			%			%			%			%
I. General Hospitals with Medical Schools ...	803.5	58.7	7.3	834.8	63.6	7.5	229.5	32.7	14.3	1,033.8	95.2	9.2	956.0	104.0	10.9	178.5	36.4	20.4
II. General Hospitals without Medical Schools having a complement 150 beds or over ...	293.9	50.7	17.2	238.2	20.8	8.8	184.6	18.4	13.7	322.5	23.6	7.8	198.1	12.3	6.2	98.2	14.2	14.5
III. General Hospitals having a complement 70 to 149 beds ...	191.9	17.7	9.3	221.5	16.8	7.6	113.7	21.7	19.1	307.0	20.2	6.5	279.5	25.7	9.2	117.3	18.9	16.1
IV. General Hospitals having a complement under 70 beds with a Resident Medical Officer ...	25.0	3.0	12.0	—	—	—	—	—	—	28.0	5.0	17.9	—	—	—	—	—	—
V. General and Cottage Hospitals having a complement 30 beds or over without a Resident Medical Officer	8.9	3.4	38.2	13.3	2.5	18.3	3.8	2.5	65.8	6.0	0.0	0.0	12.0	1.0	8.3	3.0	2.0	66.7
VI. General and Cottage Hospitals having a complement under 30 beds without a Resident Medical Officer	—	—	—	—	—	—	—	—	—	—	—	—	—	—	—	—	—	—
VII. Hospitals for Women ...	—	—	—	60.3	0.6	0.9	9.1	0.6	6.1	—	—	—	97.3	1.6	1.6	—	—	—
VIII. Children's Hospitals ...	—	—	—	—	—	—	398.9	48.4	12.2	—	—	—	—	—	—	386.3	51.9	13.4
IX. Children's (Long Period) Hospitals ...	—	—	—	—	—	—	—	—	—	—	—	—	—	—	—	—	—	—
X. Maternity Hospitals ...	—	—	—	—	—	—	—	—	—	—	—	—	—	—	—	—	—	—
XI. Ophthalmic Hospitals ...	—	—	—	—	—	—	—	—	—	78.0	7.5	9.7	72.4	6.0	8.2	15.0	4.5	29.5
XII. Hospitals for Disorders of the Nervous System ...	121.3	5.5	4.5	113.9	5.3	4.7	25.0	0.1	0.3	—	—	—	—	—	—	—	—	—
XIII. Throat, Nose and Ear Hospitals ...	—	—	—	—	—	—	—	—	—	54.3	10.1	18.7	57.4	8.6	15.2	20.1	1.1	5.2
XIV. Unclassified Special Hospitals (not comparable) ...	382.2	22.7	5.9	388.3	33.6	8.7	132.1	9.3	7.1	314.8	43.3	13.7	428.8	83.2	19.4	303.5	8.0	2.6
Totals and Averages for all Hospitals ...	1,826.7	161.7	8.9	1,870.8	143.2	7.7	1,046.7	133.7	12.8	2,144.4	213.9	10.0	2,101.5	242.4	11.5	1,121.9	137.0	12.2

Beds allocated to Men, Women and Children in the
Maternity and Gynaecological Beds).

SECTION C.

ALL GROUPS.

Beds reserved for either Medical or Surgical Cases.									Totals.									GROUPS.
Male.			Female.			Cots.			Male.			Female.			Cots.			
Average Number of Beds		Per-centage of Open Beds Vacant.	Average Number of Beds.		Per-centage of Open Beds Vacant.	Average Number of Beds.		Per-centage of Open Beds Vacant.	Average Number of Beds.		Per-centage of Open Beds Vacant.	Average Number of Beds.		Per-centage of Open Beds Vacant.	Average Number of Beds.		Per-centage of Open Beds Vacant.	
Open.	Vacant.		Open.	Vacant.		Open.	Vacant.		Open.	Vacant.		Open.	Vacant.		Open.	Vacant.		
20	21	22	23	24	25	26	27	28	29	30	31	32	33	34	35	36	37	38
		%			%			%			%			%			%	
—	—	—	—	—	—	—	—	—	1,837.3	153.9	8.4	1,790.8	167.6	9.4	408.0	69.1	17.0	I.
—	—	—	—	—	—	—	—	—	616.4	74.3	12.1	436.3	83.1	7.6	232.8	32.6	14.1	II.
75.0	8.4	11.2	99.0	14.0	14.1	52.0	9.5	18.3	573.9	55.3	9.7	600.0	56.5	9.4	283.0	50.1	17.7	III.
94.0	12.6	13.4	106.3	14.9	14.0	74.4	15.5	20.8	147.0	20.6	14.0	106.3	14.9	14.0	74.4	15.5	20.8	IV.
179.3	40.7	22.8	205.4	33.4	16.3	74.8	30.2	40.2	194.2	44.1	22.8	231.2	36.9	16.0	81.6	34.7	42.4	V.
39.9	13.7	34.4	46.0	10.7	23.4	27.0	7.9	29.3	39.9	13.7	34.4	46.0	10.7	23.4	27.0	7.9	29.3	VI.
—	—	—	—	—	—	—	—	—	—	—	—	157.6	2.2	1.4	9.1	0.6	6.1	VII.
—	—	—	—	—	—	—	—	—	—	—	—	—	—	—	785.2	100.3	12.8	VIII.
—	—	—	1.0	0.0	0.0	180.6	14.2	7.9	—	—	—	1.0	0.0	0.0	180.6	14.2	7.9	IX.
—	—	—	—	—	—	—	—	—	—	—	—	—	—	—	—	—	—	X.
40.7	6.3	15.6	47.6	7.1	14.9	7.1	2.0	28.5	118.7	13.8	11.7	120.0	13.1	10.8	22.1	6.5	29.2	XI.
33.9	0.8	2.4	41.8	0.2	0.6	6.0	0.8	13.0	155.2	6.3	4.0	155.7	5.5	3.6	31.0	0.9	2.8	XII.
—	—	—	—	—	—	—	—	—	54.3	10.1	18.7	57.4	8.6	15.2	20.1	1.1	5.2	XIII.
59.8	5.8	9.7	142.7	16.6	11.6	147.9	14.1	9.5	756.8	71.8	9.5	959.8	138.4	13.9	583.5	31.4	5.4	XIV.
522.6	88.3	16.9	689.8	96.9	14.1	569.8	94.2	16.5	4,493.7	463.9	10.3	4,662.1	482.5	10.4	2,738.4	364.9	13.3	

THE UNIVERSITY OF CHICAGO
LIBRARY



APPENDIX.

NOTES BASED ON INFORMATION SUPPLIED BY THE HOSPITALS.

(N.B.—The Notes refer to the figures of the year 1929. It should not be taken to follow that they are normally applicable at the Hospital concerned unless the context makes this evident.)

Belgrave Hospital.—Ward of 10 beds for children requiring operations for removal of tonsils and adenoids vacant for a week at all school holidays, as it is found that only two-thirds of the children sent for prior to a holiday turn up.

Bromley and District Hospital.—The high percentage of beds vacant is mainly accounted for by the low occupation of the 8 children's cots. Alterations are in progress and the number of cots will be reduced, which will result in a higher average occupation for the Hospital.

City of London Hospital for Heart and Lungs.—The occupation of the 16 balcony beds is affected by the incidence of cases suitable for treatment under such exposed conditions. Non-occupation of these totalled 1,574 bed-days out of a total of 2,398. 8 cots are only occasionally in use.

City of London Maternity Hospital.—Each Ward is closed for forty-eight hours for disinfection once every fortnight.

East Ham Memorial Hospital.—The difficulties involved in the re-building and gradual re-opening of the Hospital are responsible for the large percentage of beds vacant. It was impossible to reserve beds for any particular class of case, and Male and Female Wards were opened or changed as circumstances demanded.

Florence Nightingale Hospital.—The Hospital is closed for 4 or 5 weeks (August) for annual cleaning and staff holidays.

Golden Square Throat, Nose and Ear Hospital.—The closure through infection applies chiefly to the Children's Ward, but owing to the proximity of that Ward to one of the Women's Wards, it is sometimes necessary to suspend the admission of both children and adults for certain periods.

Grosvenor Hospital.—The Hospital is closed in August for annual cleaning and staff holidays.

Hampstead General Hospital.—The Hospital was not closed during reconstruction, and the difficulties involved thereby are responsible for the large percentage of beds vacant.

Hospital for Consumption (Frimley).—Although Paying Patients may be taken up to 50, beds are not specially reserved for this purpose; the average number of Paying Patients during 1929 being 24.

Hospital for Epilepsy.—Failure to attend for admission and unexpected discharge of Patients are the principal causes of vacancy.

Hospital of St. John and St. Elizabeth.—The exceptionally large number of bed-days lost is due to an epidemic of scarlet fever of a very mild character which it was impossible to diagnose in the early stages. In consequence, the infection spread to a very alarming extent amongst the Patients and the Nurses and Medical Staff; finally it was decided to close the Hospital entirely. While the Hospital was closed the opportunity was taken to carry out annual repairs and re-decorations, and some of the Nurses took their holidays at the same time. The re-opening of the Hospital was rather slow on account of the shortage of Nurses and Domestic staff, the Wards being opened as the necessary staff returned to work.

Invalid and Crippled Children's Hospital.—The large proportion of closed and vacant beds is due to the change over from Orthopaedic cases to Babies under five. Some time elapsed before final arrangements for the change were made by the Medical Officer for Health. 4 Verandah beds were still closed at 31st December.

King George Hospital, Ilford.—4 beds only are definitely reserved for Accidents, although the average daily number of beds occupied by Accident cases was 12.2.

London Fever Hospital.—The Hospital beds are normally allocated between Male, Female and Cots, but it is found to be impossible to adhere to the nominal allocation.

24 beds are considered as for Private Patients, but it is sometimes necessary to use them for isolation and the treatment of doubtful or complicated cases, and they cannot be considered as definitely reserved for Paying Patients.

London Homœopathic Hospital.—Beds were closed owing to several outbreaks of infection during the year, mostly in the Children's Ward, followed by short periods of quarantine. This is due in a great measure to the lack of an Observation Ward for the admission of cases suspected of infectious diseases—a want which has been acutely felt and urged by the Medical Staff for some considerable time. Under the scheme of the Extension of the Nurses' Home, plans are now prepared to include provision of an Observation Ward, which it is hoped to complete this year.

London Hospital.—Of the 22 Staff beds, 11 can only be used by the Nursing Staff and 3 by the Resident Medical Staff. In these the proportion of vacancy is naturally higher.

London Lock Hospital, Female.—By arrangement with the Board of Control, 6 beds are reserved in the Mental Defectives Unit for Certified cases. The highest occupation of these 6 beds at any time during 1929 was 3.

London Lock Hospital, Male.—One Ward reserved for certain cases is sometimes nearly full and at other times almost empty. The Committee are considering the question of using a smaller Ward.

London Temperance Hospital.—The Surgical Beds show a low average occupation compared with beds open. Occasionally beds are kept vacant while awaiting Patients who have been written for, necessitating the use of temporary beds in other Surgical Wards.

Metropolitan Ear, Nose and Throat Hospital.—The Hospital is closed for one month for cleaning and staff holidays.

Mount Vernon Hospital.—High vacancy is due to the transition of the Hospital from tuberculosis to cancer during the year.

Paddington Green Hospital for Children.—Both wards are closed for 3 weeks in each year for annual cleaning.

Plaistow Maternity Hospital.—Nominally the complement is—

- (a) 34 Maternity beds,
- (b) 4 Gynæcological beds,
- (c) 4 for Sick Nurses,

but (b) and (c) are not specially reserved for these cases and are generally used for Maternity cases.

Princess Louise Kensington Hospital for Children.—Tonsil cases admitted on Friday morning are discharged on Sunday morning, and the next batch admitted on Monday morning.

Royal Free Hospital.—Beds are usually closed for a fortnight for cleaning.

Royal Northern Hospital.—The abnormal number of beds closed was due to infection in the Children's Sections.

Royal Waterloo Hospital.—The Isolation beds are sometimes used for short period minor cases.

St. Bartholomew's Hospital.—All cots (Medical, 27; Surgical, 20) are in the Adults' Wards, but the occupation has not been separately recorded.

Each Ward Block in turn is thoroughly overhauled and renovated every fourth year. In 1929, 228 beds were closed for eight weeks for this purpose.

St. John's Hospital for Diseases of the Skin.—The wards are closed for 4 or 5 weeks (August) for cleaning and staff holidays.

St. John's Hospital, Lewisham.—1,023 bed-days were lost through septic infection. No member of the Medical Staff has ever known a previous outbreak of this kind. 2 Isolation beds are in one room, and it is very seldom possible to use both.

St. Mary's Hospital, Paddington.—The 14 beds closed during re-building have not yet been re-opened owing to lack of accommodation for Nursing Staff.

St. Paul's Hospital.—Although 4 beds are nominally reserved for Females, there was only an average daily occupation of 2.68; unoccupied beds in the Female Ward being used as required in the Male Wards.

Seamen's Hospital Society (Liphook).—A Ward of 10 beds (Medical) for Officers is not so fully occupied as the accommodation for ordinary Patients.

University College Hospital.—An exceptionally large number of outbreaks of scarlet fever occurred in the Ear, Nose and Throat Department, in consequence of which the Wards were closed for about two months for re-decoration, and other minor precautions were taken.

Noticeable fluctuations occurred in the occupation of the 10 Ophthalmic beds, which are included under the general heading Surgical. The figures for 1929 are as follows:—

Average daily number of Ophthalmic beds open	...	10
" " " " " occupied	...	7.7

This shows a much lower percentage of beds occupied than in the case of other Surgical beds (77 per cent. against 92.7 per cent.).

Victoria Children's Hospital.—The Isolation beds were temporarily used for the Night Nurses' sleeping accommodation during the installation of a lift in the Nurses' Home.

In the early part of the year the number of Surgical In-patients dropped considerably but improved later in the year. In view of the general decrease in Surgical cases amongst Children and the great demand for more accommodation for infants under two, the Committee are considering the question of converting one Surgical Ward into a Ward for Babies.

West End Hospital for Nervous Diseases.—The 27 beds for Females include 6 Single Bed Wards to which Male patients are occasionally transferred for special purposes, such as recovery from Surgical operation.

Western Ophthalmic Hospital.—The failure of Patients to attend for admission, unexpected discharge of Patients, and Public Holidays are the principal causes of vacancy.

Woolwich and District War Memorial Hospital.—32 beds are normally available for Paying Patients, but the pressure on the beds in the General Wards has been so great that Private Cubicles were used to cope with accidents and emergency illnesses.

King's Fund



54001000048218

5

