

King Edwards Hospital Fund
for London
Annual Report





THE
LIBRARY OF
THE
UNIVERSITY OF
TORONTO
100 St. George Street
Toronto, Ontario

**KING EDWARD'S HOSPITAL FUND
FOR LONDON**

Patron: Her Majesty The Queen

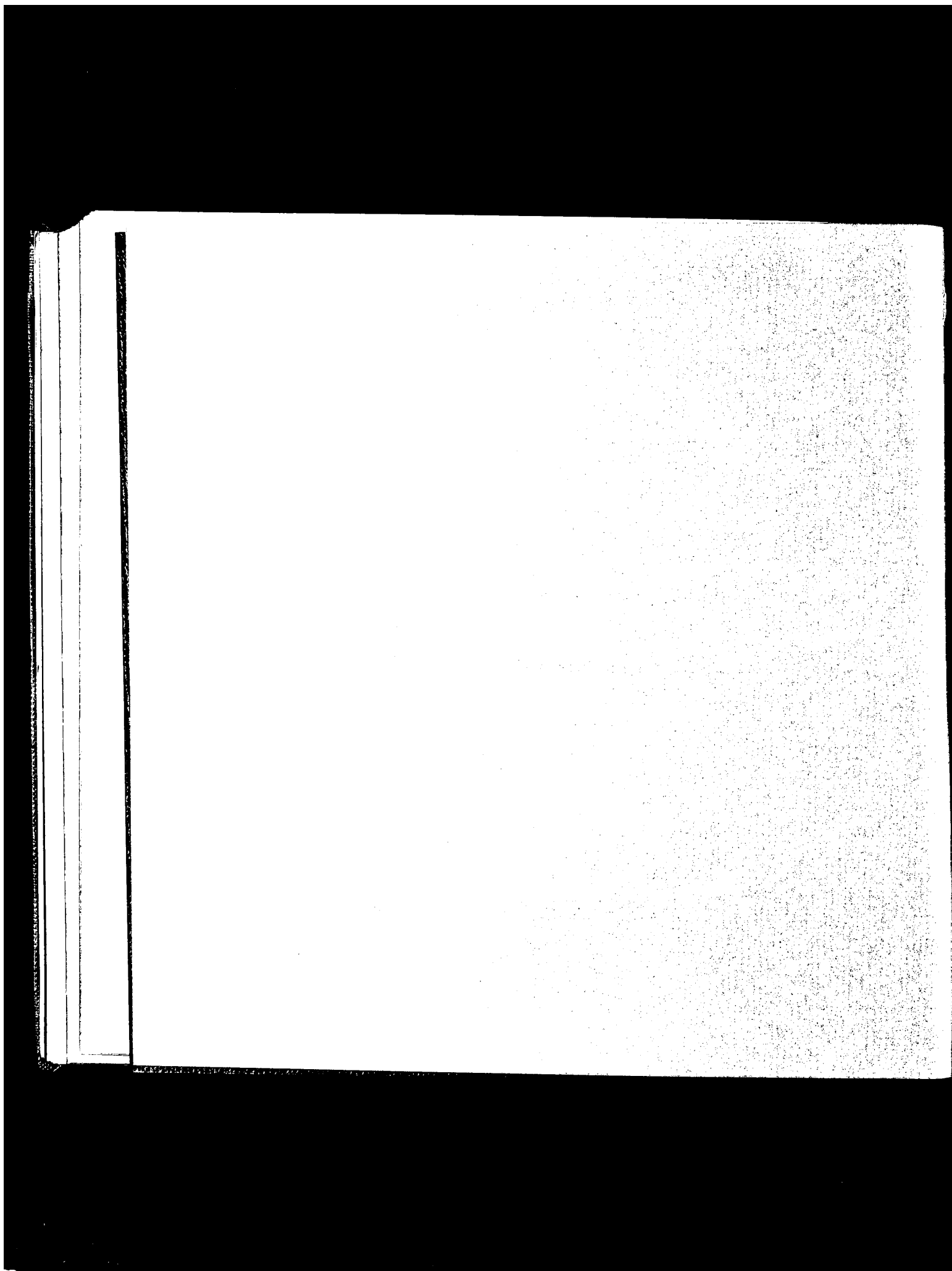
Governors: HRH Princess Alexandra,
The Hon Mrs Angus Ogilvy GCVO
Lord Ashburton KG KCVO JP
Lord Cottesloe GBE TD

Treasurer: R J Dent

Chairman of the Management Committee: Lord Hayter

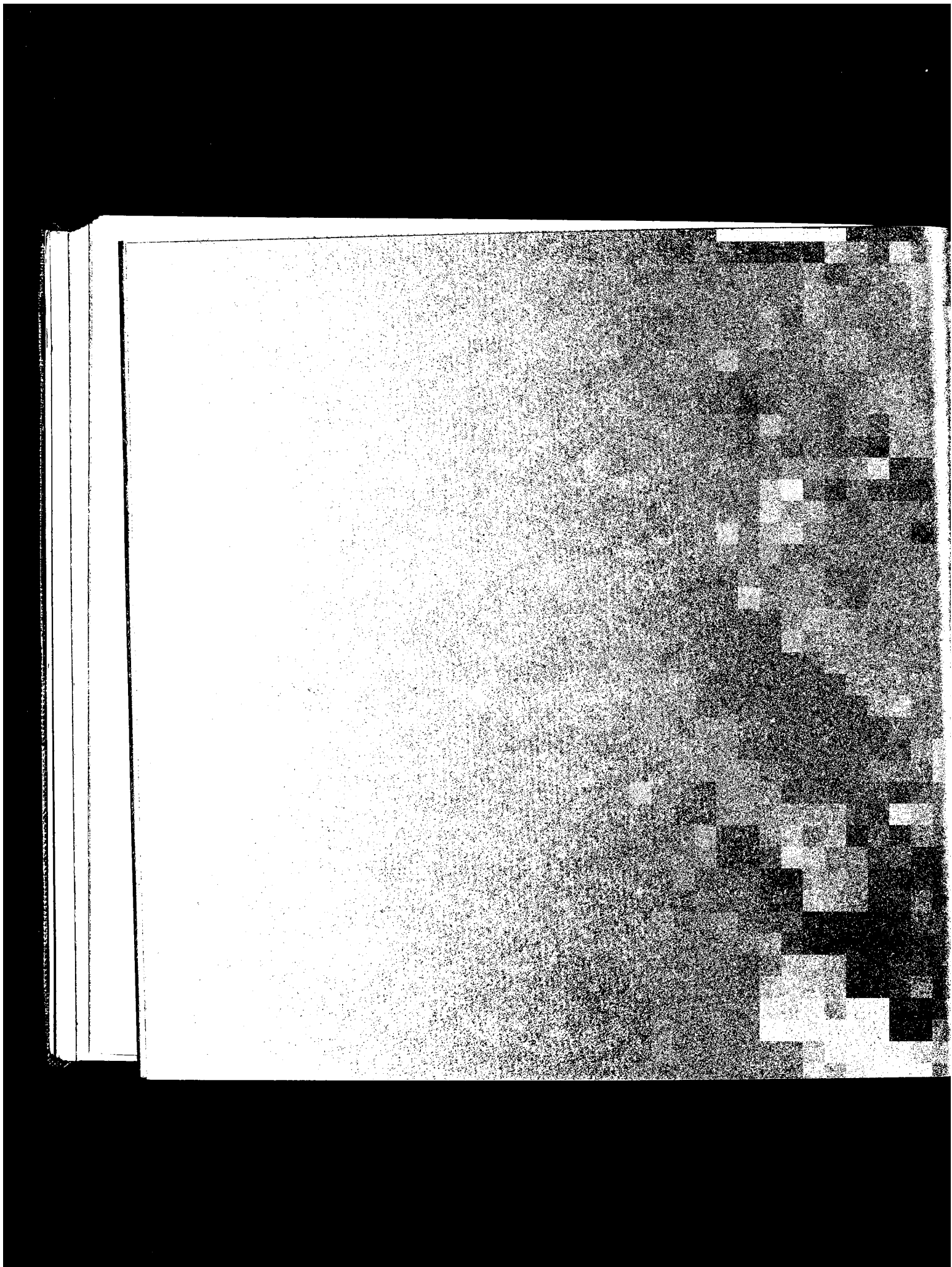
Secretary: G A Phalp CBE TD

14 Palace Court London W2 4HT
Telephone: 01-727 0581



CONTENTS

	page
Report 1974	5
Finance	13
Contributors	17
Five-year analysis of grants 1970 to 1974	18-19
Grants made in 1974	20
to National Health Service authorities	20
to independent homes and hospitals	21
to organisations and educational centres	22
in-house grants	24
King's Fund Centre conferences, meetings and exhibitions	26-27
King's Fund College academic year 1974/5	28
Emergency Bed Service	29
General Council and committees	30
Hospital visitors	33
Staff directory	34



REPORT 1974

In a troubled year for the whole nation, people in the health services had their full share of difficulties as planning for reorganisation of the National Health Service began to give way to action. In the midst of much unrest, most of it seemingly unconnected with the reorganisation programme, new statutory authorities, management teams and community health councils were being formed.

Reorganisation is bringing new work, new opportunity and new people into the health services. And it is for the newcomers, and others who may be learning of King Edward's Hospital Fund for London for the first time, that this annual report contains a brief restatement of the Fund's origins and aims, a note on its institutions, and an explanation of its ways of operating.

ORIGINS AND AIMS

The Fund is an independent charity founded in 1897 and incorporated by Act of Parliament in 1907. Its purposes, set out in the Act, are '... the support benefit or extension of the hospitals of London or some or any of them (whether for the general or any specific purposes of such hospitals) and to do all such things as may be incidental or conducive to the attainment of the foregoing objects'.

These words have been the guide to practice over the years and have enabled the Fund to adjust the form and direction of its work when the organisation of health care changes and new

needs can be foreseen. The Fund is permanent, but the means by which it fulfils its purposes are always changing. It is an independent foundation, but has always worked closely with the statutory authorities and hospital managements of the day. Its concern is the promotion of good practice, improvement and innovation in all except the purely clinical aspects of hospital care.

About half its income is distributed in the form of grants. The rest is used to maintain the King's Fund College, King's Fund Centre and the Emergency Bed Service, and for publications and general administration.

THE FUND'S INSTITUTIONS

The King's Fund College provides management training for senior health service staff and for national administrative trainees, and experimental courses and seminars for various groups. Most courses are multidisciplinary and residential.

The King's Fund Centre organises conferences, meetings for small groups, and exhibitions, and provides an extensive information service on all matters relating to health care.

The Emergency Bed Service arranges urgent admission to hospitals in the Greater London area. It supplements the normal practice, whereby general practitioners make arrangements direct with the hospitals of their choice, by handling cases in which this direct approach is unsuccessful.

The EBS, concerned with what may be termed the 'perpetual' needs of patients and their doctors, is a local service, continuous and virtually unchanged since it was established in 1938. A note on its work and a chart showing admissions dealt with in the past three years appear on page 29.

The services of the College and the Centre, in contrast, extend over the whole country and diversify in response to the changing needs of the great variety of people, professional and volunteer, now engaged in health care. In addition, as they have developed, both the College and the Centre have formed valuable contacts overseas. Their activities during the year are listed on pages 26-28.

The three institutions each began as an experimental enterprise. They are now established on a permanent footing and their running costs are no longer entirely financed by the Fund. The College has a considerable income from fees, and the Centre, having developed a national role, is supported by substantial contributions from the Department of Health and Social Security and Thames regional health authorities. The EBS, as a service for London, is financed chiefly by the Thames RHAs. The Fund, however, provides accommodation and administration, recruits staff and retains responsibility for operational policies. Thus the independence and neutrality of the three institutions are preserved. The financial arrangements, which are adjusted at intervals, accord with the Fund's general policy of avoiding permanent

and large-scale commitment of resources in order to release monies for further experiment and innovation.

GRANTS

The Fund makes grants for two purposes. The more traditional are direct grants for building, furnishing and equipment and other practical improvements to services. These grants are available only to hospitals and homes in the Greater London area, or those elsewhere which take most of their patients from London. Grants to NHS hospitals are given only for projects, or items of them, which cannot be funded entirely from statutory sources. The Fund looks particularly for the experimental or innovating content of any project it is asked to support.

Though little publicised compared with some of the Fund's other activities, and very small in relation to monies spent in building by statutory authorities, such grants from an independent source may often help individual hospitals to develop a new idea or to make life more congenial and purposeful for their patients and staff.

Applications from NHS authorities for grants of this kind are considered by the Hospital Grants Committee and, in some cases, the Fund's Management Committee. Applications from independent hospitals and homes are considered by the Auxiliary Hospitals Committee.

This part of the Fund's work can be traced back to the very early days when hospitals in London depended heavily upon the Fund for their

general upkeep. A system of formal visiting was developed to encourage hospitals to raise their standards, to improve the management of their finances, and to ensure that the Fund's grants were being put to good use. When the NHS was established, however, the purpose of such visits was of necessity changed so that nowadays they form part of the general procedure by which the Fund keeps contact with London hospitals. In that connection it should be mentioned that the standing committees of the Fund, and in particular the members of the two grants committees, undertake visits for the study of individual requests or enquiries.

Over the last five years, the Hospital Grants Committee has made 45 visits (usually two to four members for each visit) to NHS hospitals and has distributed £480,000 in grants. Members of the Auxiliary Hospitals Committee have made 350 visits to independent hospitals and homes and grants amounting to £330,000 have been distributed. During the same period, the Fund's official Visitors have made 24 visits.

This small number of visits by the official Visitors is partly due to the fact that four or five years ago there was a temporary cessation of such visits; also, more recently, owing to the preoccupation of the service with administrative reorganisation, the official visits on the Fund's behalf had to be limited to the postgraduate teaching hospitals of London. The Management Committee is now considering whether official visiting by the Fund should in present circumstances be continued.

ENQUIRY, EXPERIMENT AND EDUCATION

The second main purpose in grant-making is to support enquiry and projects of an experimental or educational nature. Applications for grants for these purposes are considered by the Research and Development Committee and, again in certain cases, by the Management Committee.

Unlike those for building, the grants are not geographically confined to London. Projects based elsewhere may be supported if a suitable base in London cannot be provided. In selecting a project, the Fund takes into account whether its support would help answer a need which, because of the project's timing or for some other reasons, is unlikely to be met by the health authorities or other organisations. The chief criterion is that the project is likely to have some practical outcome which, in its general application, can be of use to the hospitals of London. Clinical and academic research, and education for statutory or clinical qualifications, are excluded.

Within these confines, the projects cover a very wide area. Among those now being supported, for example, are a training programme for long-stay psychiatric patients to prepare them for life outside hospital, an enquiry into the present practice of fire precautions in relation to the requirements of the Chronically Sick and Disabled Persons Act, a study of the use of physiotherapy in general practice, an experi-

mental scheme of comprehensive training for the remedial professions.

From time to time, the Fund concerns itself with a particular need for major initiative and gives substantial support for its development. Some examples are the improvement of hospital catering, the establishment of postgraduate medical centres and hospital libraries, the organisation of voluntary help in hospitals, and the improvement of services for the mentally handicapped. The latest of these large-scale projects is concerned with medical records and includes a study of systems now in use, and pilot studies of the problem-oriented system in both medical care and medical education.

Some projects are 'in-house'; that is, initiated, developed and financed entirely by the Fund, usually based at the Centre or the College and often arising from their work. Some may be supported by the Fund but undertaken by an outside body. In many cases, however, the Fund supports and often initiates a project to be developed in collaboration with other bodies – a health authority, professional or voluntary organisation or an educational centre.

Reports and other materials produced from some projects are published by the Fund, by authority of the Publications Panel. The current booklist contains some 30 titles. Reports of a temporary or specialist nature which are likely to have small readership and do not warrant full-scale publication may be produced in the *King's Fund Project Papers* series. Occasionally,

the Fund may help towards the cost of publication by another organisation.*

The Fund has also helped to establish charitable trusts which promote the welfare of people suffering from specific disorders, and new associations of professional or voluntary groups whose work concerns some aspect of the Fund's work.

A five-year analysis of the types of grants made and the groups of recipients is shown on page 18. Grants made during 1974 are listed in more detail on pages 20-25.

SOME NEW DIRECTIONS

It is a tradition of the Fund to keep all its activities under continuous review to ensure their relevance to those needs of hospitals which are its particular concern. Two major influences have given contemporary impetus to this traditional practice; these are the general economic condition of the country, and the reorganisation of the NHS.

A comprehensive review, begun by the Management Committee during 1974, is proceeding in which the questions raised by these two influences are being studied in depth.

The Fund has always been fortunate in having distinguished advisers in its financial affairs whose investment policies have ensured its income. But some of the present financial

*The official booklist, *King's Fund Books 1975*, is circulated with this annual report and may also be obtained from the Head Office of the Fund. The list of *King's Fund Project Papers* is available from the King's Fund Centre.

constraints lie outside the Fund's control and their course can only be carefully watched insofar as they affect the Fund's ability to carry out its purpose. They have already led to large increases in running costs and may place further limitation on financial resources. This, in turn, could have profound effect on future practice, though its precise nature cannot yet be foreseen.

The second influence, reorganisation of the NHS, brings into question the role of a charitable foundation established at a time when a hospital had a clear, separate and independent function. It has now become a specialised, technical and very expensive component of an integrated health care system, controlled and financed by a central government department. The changes for hospitals are concomitant with changes in the Fund's practice to meet new needs and to discard activities no longer relevant.

Reorganisation has become the focus for many of the Fund's newer activities and for some changes of direction and emphasis in work already underway. The College, for example, expanded its special programme for members of the new health authorities, their teams of officers and for district management teams. Included during the year were courses for secretaries of the new community health councils and courses on industrial relations in the NHS.

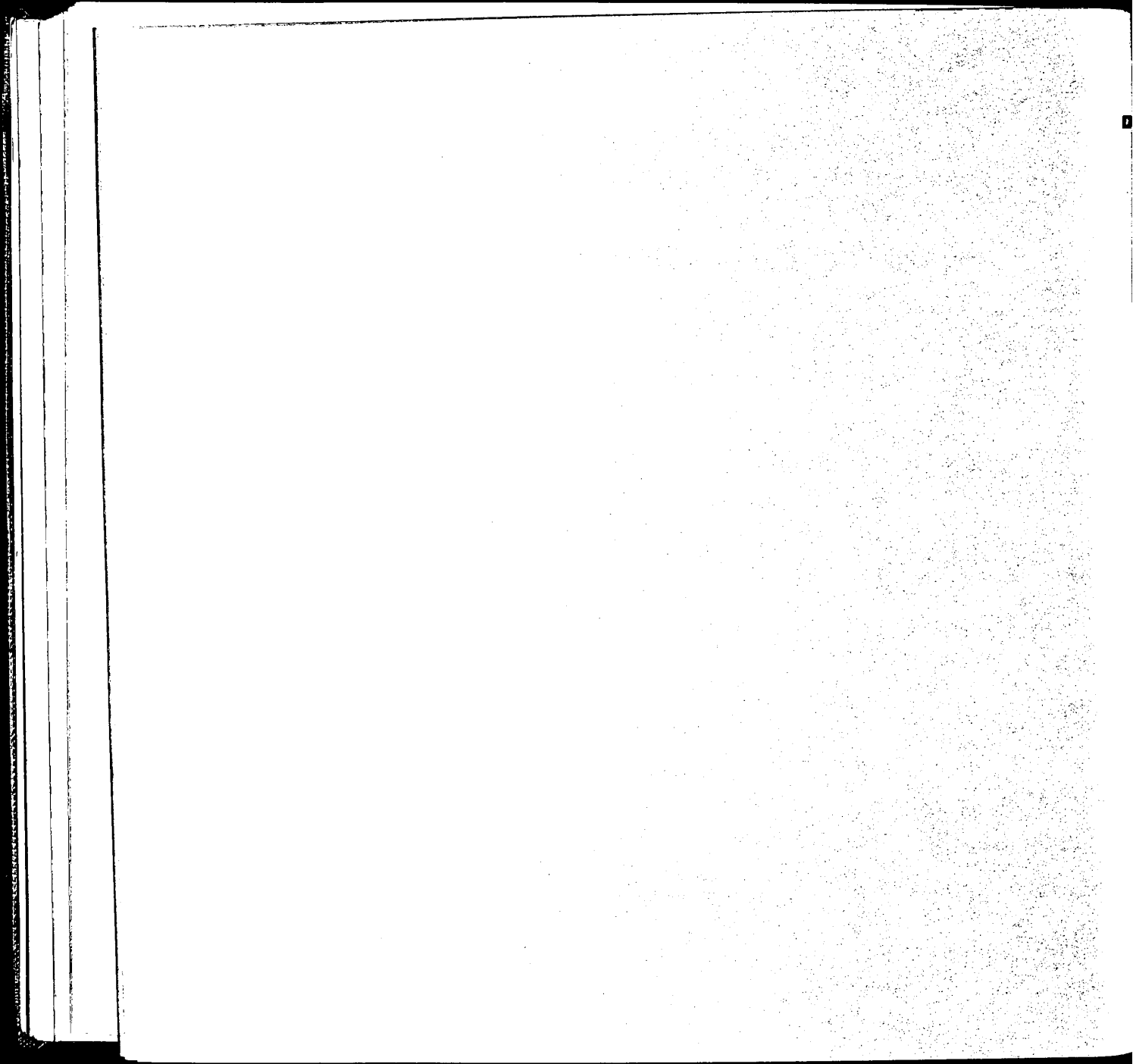
The mental handicap project, originally a five-year programme, is extended for two years. The project involves the Centre, the College, and a growing number of people in hospitals, resi-

dential homes, the community services and voluntary organisations, in a variety of experimental and educational activities to improve the care of the mentally handicapped and the training and outlook of staff. The two-year extension is intended to ensure continuity of these activities during the early stages of the NHS reorganisation.

One major problem which reorganisation has highlighted is the demand for adequate information services. The Fund has supported a number of projects in recent years to help develop systems for the collection, presentation and use of information. An open day was arranged jointly by the College and the Centre in which staff of information units from central, regional and area health authorities demonstrated the services they provide and exchanged views on their problems, needs and aspirations. Also on view were some of the Fund's own information services developed for internal use and available generally to health service staff.

Towards the end of the year, the Fund was asked by DHSS to support a project to prepare the way for the establishment of a national body for community health councils. It was important for this preliminary and short-term work to be supported from an independent source, and undertaken in neutral territory by staff not employed or in any way attached to the health service authorities. The Fund is peculiarly well fitted to provide all such requirements. A secretariat staffed by the Fund has been set up at the Centre and work is now proceeding.

The project is a good example of the Fund's way of operating, its capacity to respond quickly to a need, and the unique contribution it is able to make towards innovation and improvement in health care.



FINANCE

The following pages contain abridged financial statements extracted from the full accounts of the King's Fund which have been audited by Deloitte & Co, and are available on request. The statements show that at 31 December 1974 the total market value of the Fund's assets was £18 500 000 (1973 £25 500 000) and the income for the year £1 359 000 (1973 £1 098 000). Since 31 December 1974 there has been a substantial recovery in the market value of the Fund's quoted investments.

The increase of income reflects the continued effect of deposit at relatively high rates of interest of proceeds from the sales of property made in 1973. Reinvestment of these funds in property, in particular for the new King's Fund Centre, is being made over some two or three years and in consequence the income of the Fund continues at a rate which may prove to be exceptionally high.

Although this increase in the resources of the Fund is extremely welcome, it is nevertheless true that in these times of inflation the King's Fund, in common with other similar organisations, faces the difficult problem of increasing costs. The Fund will therefore always welcome new sources of money to enable it to continue and develop the part which it plays in the growth and change of hospital practice.

The Treasurer gratefully acknowledges all contributions that have been made to the Fund, and will be glad to receive any donations, large or small. In particular, he would suggest that the Fund is a most suitable object for charitable legacies. Forms for use in connection with legacies, annual subscriptions and donations will be found at the back of this report.

Bankers: Bank of England
Baring Brothers and Co Limited
Midland Bank Limited

Solicitors: Turner Peacock

KING EDWARD'S HOSPITAL FUND FOR LONDON
ABRIDGED STATEMENT OF ASSETS AND LIABILITIES AT 31 DECEMBER 1974

Valuation 31 December		Book Value 31 December	
1973	1974	1974	1973
£	£	£	£
Capital Fund			
Investments			
5 810 375	3 034 943	3 861 782	4 261 765
58 848	57 292	101 197	79 053
5 869 223	3 092 235	3 962 979	4 340 818
211 898	742 470	742 470	211 898
6 081 121	3 834 705	4 705 449	4 552 716
General Fund			
Investments			
7 272 769	4 472 861	6 527 272	7 092 188
62 008	40 208	60 000	85 400
10 162 000	8 530 978	5 112 700	3 618 844
—	—	1	1
17 496 777	13 044 047	11 699 973	10 796 433
1 891 703	1 667 046	1 667 046	1 891 703
19 388 480	14 711 093	13 367 019	12 688 136
Special Funds			
Investments			
42 627	32 097	59 567	59 567
9 833	11 108	11 108	9 833
52 460	43 205	70 675	69 400
£25 522 061	£18 589 003	£18 143 143	£17 310 252
		Total Net Assets	

ABRIDGED INCOME AND EXPENDITURE ACCOUNT
YEAR ENDED 31 DECEMBER 1974

	1974		1973	
Income	£	£	£	£
Investments	1 042 166		816 843	
Properties	309 819	1 351 985	273 508	1 090 351
Subscriptions and donations	7 012		6 778	
Legacies allocated to income	301	7 313	1 575	8 353
		£1 359 298		£1 098 704
Expenditure				
Grants allocated	481 243		495 241	
Less grants lapsed	29 054	452 189	11 880	483 361
King's Fund Centre		230 502	192 494	
Less contribution from DHSS	100 000		87 500	
from Thames RHAs	22 500	108 002	—	104 994
King's Fund College		268 034	228 104	
Less course fees received	72 608	195 426	81 873	146 231
Emergency Bed Service	145 130		113 238	
Less contribution from Thames RHAs	138 630	6 500	106 738	6 500
Publications	32 159		27 222	
Less sales	3 437	28 722	8 755	18 467
Administration				
Salaries and pensions	124 013		93 366	
Establishment and office	26 767	150 780	24 022	117 388
Other Expenses				
Maintenance of Fund premises	17 338		14 461	
Professional fees, etc	21 421	38 759	18 824	33 285
Special contribution to Pension Fund		980 378		910 226
		116 180		20 913
		1 096 558		931 139
Excess of Income over Expenditure for the year, transferred to General Fund		262 740		167 565
		£1 359 298		£1 098 704

**SUMMARY OF SPECIAL FUNDS
AT 31 DECEMBER 1974**

	£
Special Anonymous Trust (Greenwich and Bexley A H A)	19 068
Mrs L L Layborn, deceased, Trust (St Luke's Nursing Home for the Clergy)	4 090
A Brooke-Smith, deceased, Trust (Emergency Bed Service)	758
Miss A A Sampson, deceased, Trust (Independent Hospitals)	9
N H Vernon, deceased, Trust (Diabetes Research)	42 928
N H Vernon, deceased, Trust (Ear, Nose and Throat Research)	3 772
Spinal Injuries Association	50
	<hr/> £70 675

LEGACIES RECEIVED IN 1974

Capital:

	£
Cmdr F W Chaine	6 420
John Leighton	279
Miss F E Milne	10 147
F C T Mortimer	654
Emile Wertheimer	110 994
	<hr/> £128 494

Allocated to Income:

	£
Miss V Curtis Bennett	200
Miss N M Goldsmith	100
G G Halsted	1
	<hr/> £301

CONTRIBUTORS 1974

Her Majesty The Queen
Her Majesty Queen Elizabeth The Queen Mother
Gloucester Charitable Trust

Anonymous ('E M E')

Bank of England
Barclays Bank Ltd
Baring Foundation Ltd
Bawden Fund
Miss A G Blaikie
G A Boston
Viscountess Broome

A H Chester
Coutts & Co

Miss V Dodson

Miss W Edwards

Gillett Bros Discount Co Ltd
Guardian Royal Exchange Assurance Group

Lord Hayter
Cardinal Heenan
Miss E V Howells

Mrs G Inchbald
Innes Memorial Fund

Jensen & Son

Reverend E S C Lennard
Lloyds Bank Ltd
London & Northern Estates Co Ltd

Marks & Spencer Ltd
Metropolitan Bonded Warehouses Ltd
Midland Bank Ltd
Morgan Grenfell & Co Ltd
John Mowlem & Co

National Westminster Bank Ltd

Major R O'Brien MVO TD

Worshipful Company of Pewterers
P F Charitable Trust
Prudential Assurance Co Ltd

Albert Reckitt Charitable Trust
T B Robson
N M Rothschild & Sons

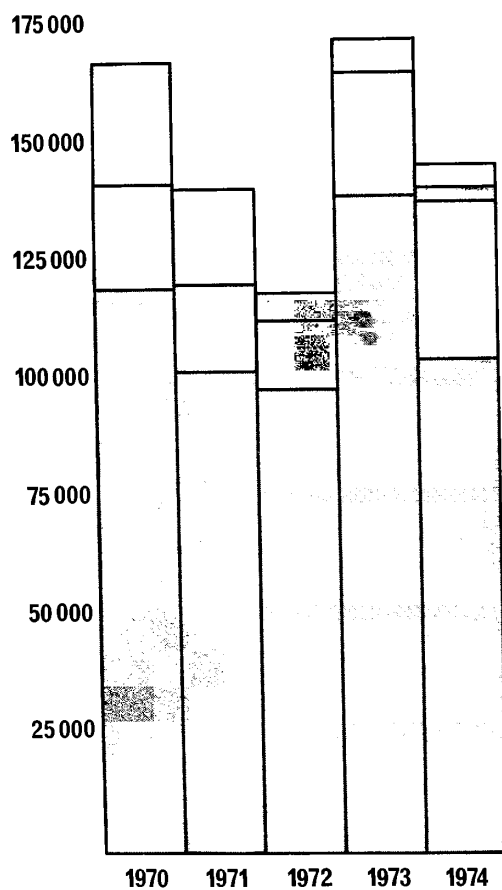
Schwartz Buchanan & Co
O N Senior
Mrs R M Simon

Ernest Taylor CBE
Trust House Forte Ltd

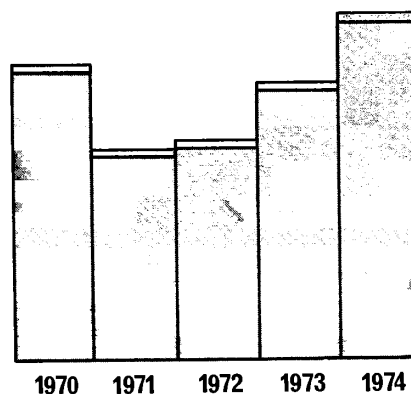
Wernher Charitable Trust
L S White
Williams & Glyn's Bank Ltd
Judge R B Willis TD

FIVE-YEAR ANALYSIS OF GRANTS

£ National Health Service and local authorities



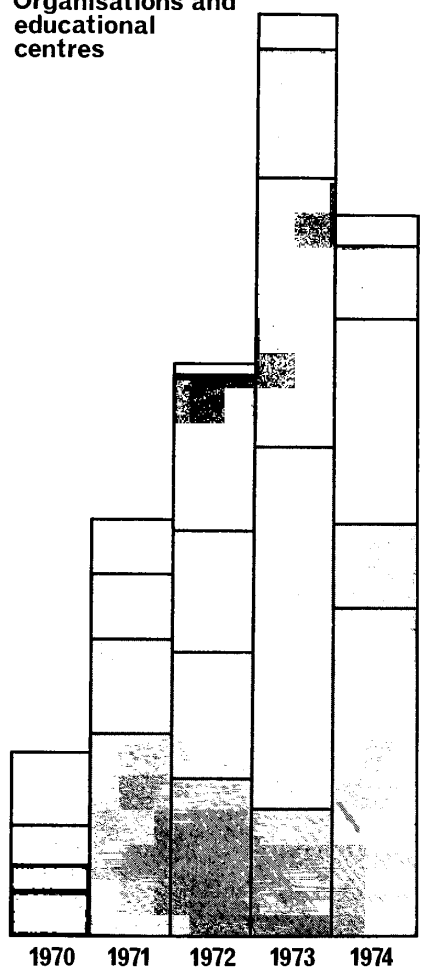
Independent hospitals and homes



- ☐ Building, furnishings, equipment and other physical improvements
- ☐ Experiment and enquiry

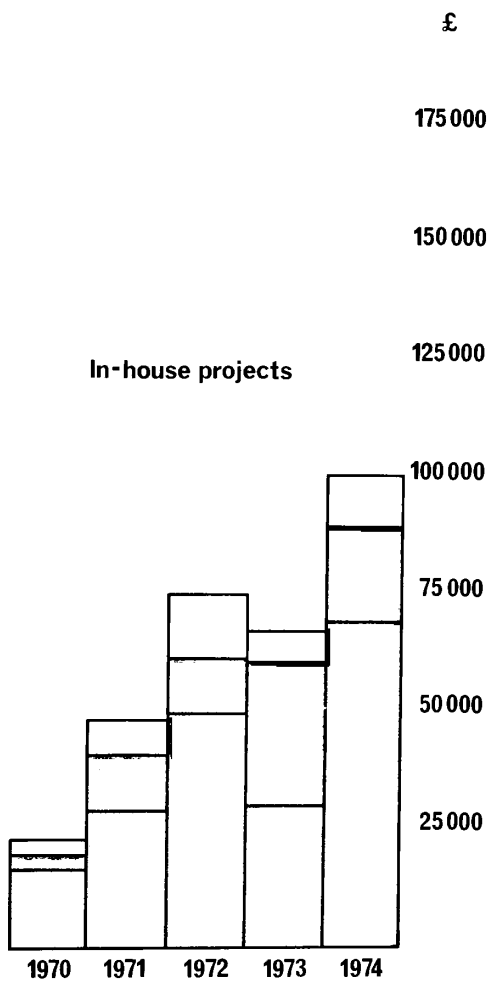
- ☐ Educational
- ☐ Setting-up and running costs

Organisations and educational centres



Other (includes travel, reporting and exhibitions)

In-house projects



GRANTS MADE IN 1974

TO NATIONAL HEALTH SERVICE AUTHORITIES

Bedfordshire AHA
Northern Health District
DANESWOOD CONVALESCENT HOME
colour television set

£

200

Bethlem Royal Hospital and
Maudsley Hospital BoG
to improve and extend triennial statistical
report
exhibition of a patient's paintings

1 750

200

Brent and Harrow AHA
CENTRAL MIDDLESEX HOSPITAL
towards improving library service
towards landscaping grounds

300

600

SHENLEY HOSPITAL
towards landscaping grounds round
patients' club

6 500

Cambridgeshire AHA
FULBOURN HOSPITAL
project to develop method of bringing about
informed change (first instalment on
two-year grant)

5 100

City and East London AHA (T)
EAST HAM MEMORIAL HOSPITAL
(Newham Medical Society)
towards fitting out a multidisciplinary
education centre

2 255

HACKNEY HOSPITAL
towards conversion of building for chapel

1 000

Dartford and Darenth HMC
WEST HILL HOSPITAL
towards installing patients' radio system
incorporating nurse-call system

10 000

Doncaster AHA
management audit in nursing services
(final instalment on three-year grant)

2 500

Dorset AHA
WEST DORSET DMT
towards development of a classified filing
system in reorganised health service

850

East Sussex AHA

Hastings Health District

BEXHILL CONVALESCENT HOME
towards extra bathroom and lavatories for
colostomy patients

1 000

Guy's Hospital BoG
NEW CROSS HOSPITAL

towards art room for elderly patients

10 500

Guy's Hospital Special Trustees

study of issues of health policy by department
of community medicine (first instalment on
three-year grant)

16 000

Hammersmith Hospital and Royal Postgraduate Medical School

furnishing for flats for visiting doctors and
scientists undertaking postgraduate clinical
training and research (first instalment on
two-year grant)

20 000

Hendon HMC

EDGWARE GENERAL HOSPITAL
towards library for postgraduate medical
centre

11 000

Hillingdon AHA

MOUNT VERNON HOSPITAL
towards hydrotherapy pool for physical
medicine department

3 000

Kent AHA

JOYCE GREEN HOSPITAL
towards extension to postgraduate medical
centre

4 000

Merton, Sutton and Wandsworth AHA (T)

St EBBA'S HOSPITAL
stocking and furnishing nursing school
library

3 000

SUTTON HOSPITAL
towards model flat for psychiatric unit

13 000

Middlesex Hospital Special Trustees

study of referrals to medical outpatients
department (first instalment on two-year
grant)

3 350

Moorfields Eye Hospital BoG

towards children's assessment unit

5 500

Northwick Park HMC	£	Dedisham School for Autistic Children, Slinfold	£
NORTHWICK PARK HOSPITAL		towards fire precautions	879
towards bus for psychiatric unit	850		
Redbridge and Waltham Forest AHA		Fallowfield, Chislehurst	
KING GEORGE HOSPITAL		carpet for lounge	300
changing rooms for non-resident staff	10 000		
St Crispin HMC		Florence Nightingale House, London SW5	
case-aides training programme (final instalment on two-year grant)	1 380	towards redecorating and recarpeting	8 000
Surrey AHA		Hamilton Lodge, Great Bromley	
ROYAL EARLSWOOD HOSPITAL		towards replacing boiler	1 500
towards fitting out patients' social centre	2 500		
Wessex RHA		Hertfordshire Seaside Convalescent Home, St Leonards-on-Sea	
towards appointment of information officer in planning unit (final instalment on three-year grant)	2 000	nurse-call system	1 010
Westminster Hospital BoG		Homefield, Bickley	
WESTMINSTER HOSPITAL		improvements to kitchen	2 300
investigation into development of indices of effectiveness in care of patients	2 500		
	£140 835	House of St Barnabas-in-Soho	
		towards renovations	2 000
TO INDEPENDENT HOMES AND HOSPITALS		King Edward VII Hospital, Midhurst	
	£	towards improvements to patients' reception area	4 000
Alexander Residential Club, London SW5		King Edward VII's Hospital for Officers, London W1	
improvements to staff quarters	1 606	mobile x-ray unit	4 500
British Home and Hospital for Incurables, London SW16		Kingston House, Leigh-on-Sea	
towards re-equipping kitchen	2 500	improvements to kitchen and building extra bedrooms	2 000
Catharine House, St Leonards-on-Sea		London and Ascot Priory Convalescent Home, Ascot	
towards fire precautions	1 000	re-equipping laundry	986
Catisfield House, Hove		Lyle Park Home, London SW15	
towards installing central heating and renovating bedrooms	2 000	nurse-call system	1 500
Compton Lodge, London NW3		Marillac Hospital, Warley	
equipment for sickbay	700	towards fire precautions	1 700
Convalescent Police Seaside Home, Hove		Moor House School, Oxted	
fitting hand-aids	330	towards new staff quarters	2 000
		Roseland, Banstead	
		electric wall heaters in residents' rooms	1 233

	£
Royal Hospital and Home for Incurables, London SW15	
towards setting up holiday home in Brighton	2 500
Royal School for the Blind, Leatherhead	
equipment for sick bay	1 250
St Cecilia's Home, Bromley	
towards fire precautions	2 000
St Christopher's Hospice, London SE26	
replacing boiler	7 000
St Luke's Nursing Home for the Clergy, London W1	
towards rewiring	3 000
St Teresa's, Dockenfield	
lift	2 745
St Teresa's Hospital, London SW20	
towards extension to nurses' home	1 500
St Vincent's Orthopaedic Hospital, Pinner	
towards setting up unit for young chronic sick	2 000
Spelthorne St Mary, Harpenden	
towards floor covering	1 500
Suffolk House, Uxbridge	
towards repairs to roof	2 000
Thomas Banting Memorial Home, Worthing	
interior decorations	225
White House Convalescent Home, Bexhill	
towards improvements to kitchen	1 500
Yarburgh Children's Home, East Grinstead	
towards furnishings and improvements	712
Convalescent Homes Conference and visits for ward sisters and social workers	672
Token grants to 20 homes and 12 hospitals	3 200
	<hr/> £73 848

TO ORGANISATIONS AND EDUCATIONAL CENTRES

	£
Association of Domestic Management	
appointment of organising secretary (final instalment on two-year grant)	2 250
Association of Independent Hospitals and Kindred Organisations	
towards running costs (further grant)	750
British Association of Social Workers	
study of social worker-volunteer relationships (final instalment on three-year grant)	2 750
British Postgraduate Medical Federation	
appointment of librarian to coordinate library services in postgraduate medical centres, and other costs (second instalment on three-year grant)	8 000
towards expenses of regional adviser's visit to USA	300
Camphill Village Trust	
towards new housing at rehabilitation centre	11 000
Central Council for the Disabled	
review of progress in implementing Section 4, Chronically Sick and Disabled Persons Act, and present administration of fire regulations (first instalment on two-year grant)	1 000
Charing Cross Holiday Dialysis Trust	
towards holiday home	10 000
Chartered Society of Physiotherapy	
experimental inservice training for physiotherapists working with mentally handicapped people (final instalment on three-year grant)	6 700
City of Westminster Society for Mentally Handicapped Children	
towards new premises for day nursery	2 000
Community Service Volunteers	
to extend service in hospitals (final instalment on two-year grant)	2 500

Council for the Education of Handicapped Children	£	Musicians' Benevolent Fund	£
towards cost of conference	500	towards expenses of setting up home in Bromley	500
Council for Postgraduate Medical Education in England and Wales		National Association for Mental Health (MIND)	
towards general practitioner's visit to USA (final instalment on two-year grant)	200	appointment of liaison officer for university students in mental health services, and other costs (final instalment on three-year grant)	8 340
Devon County Council social services department		National Association of Hospital Head Porters	
study of care of the elderly (first instalment on three-year grant)	3 500	appointment of organising secretary (first instalment on two-year grant)	2 500
Disabled Living Foundation		National Association of Voluntary Hostels	
study of clothing and dressing handicapped people (final instalment on three-year grant)	2 000	towards computerising placing service	250
readership survey of <i>Catalogue of Garments for the Handicapped and Disabled</i>	550	Nottingham Council for Voluntary Service	
Elderly Invalids Fund		appointment of personnel/liaison officer in drug dependency and personal problems (final instalment on three-year grant)	3 865
towards running costs (further grant)	5 000	Open University bursaries	
Friends of the Elderly		for staff in Thames and Wessex RHAs to attend courses on handicapped people in the community	550
towards fire precautions in three homes	4 500	Orpington Mental Health Association	
Geriatric Day Hospital Trust Fund		to develop voluntary activities (Anchor House Project) (second instalment on three-year grant)	2 000
towards building day hospital at St Mary Abbot's Hospital	5 000	Oxford Centre for Management Studies	
Institute of Hospital Engineering		corporate membership subscription (annual grant)	1 000
travel expenses (extension to grant)	14	Peter Bedford Project	
Invalid Children's Aid Association		towards training long-stay psychiatric patients for life outside hospital	7 000
kitchen equipment (Meath School) and towards cost of minibus (Edith Edwards House)	390	Psychiatric Rehabilitation Association	
Law and Local Government Publications Ltd		towards setting up restaurant lunch club	2 000
towards publishing <i>British Health Care and Technology</i> series (further grant)	2 000	Queen Elizabeth's Foundation for the Disabled	
London Medical Group		towards setting up assessment centre for severely handicapped school leavers (second grant)	14 000
towards running costs (further grant)	5 000		
Mental After-care Association			
extension to central heating system at King's House, Bournemouth	636		

	£
Queen's Nursing Institute towards kitchen and restaurant at headquarters	10 000
ROMA Housing Association Ltd towards setting up short-term home	2 500
Royal College of Nursing towards directory of nursing trusts and funds	2 500
towards supplement to bibliography of nursing research	1 100
Royal Society of Arts industrial design bursaries: hospital equipment section (further grant)	200
Shirley Institute study of clothing for long-stay patients (final instalment on five-year grant)	6 370
Toy Libraries Association towards development (second instalment on four-year grant)	3 000
Toynbee Hall towards centre for mentally handicapped people (first instalment on three-year grant)	8 000
University of Southampton department of social administration study of social workers in psychiatric hospitals (final instalment on three-year grant)	1 350
	<hr/> £153 565

IN-HOUSE GRANTS

	£
Art for the elderly (MCH-WGC) to introduce art classes to elderly patients and institute a teachers' training course (final instalment on four-year grant)	3 000
Brunel University/King's Fund joint appointment (FRR) to King's Fund College staff (annual grant)	2 500

	£
Comprehensive training for remedial professions (FRR) experimental training scheme in association with the department of life sciences, Polytechnic of Central London (final instalment on two-year grant)	7 500
Drug dependency discussion group (JBC) expenses of meetings (first instalment on two-year grant)	1 000
Exhibitions (WMA-R)	3 061
Experimental course for teachers of mentally handicapped people (JRE) part of mental handicap services project	3 360
King's Fund seminar of nurses (FRR) for senior nurses from Canada, USA and UK	2 000
Language barrier (MDH) to develop materials for teaching English to foreign staff in hospitals (second instalment on three-year grant)	3 750
Living in hospital (JRE) preparation of handbook on social needs of people in long-term care	2 000
Medical records (GAP) pilot studies of use of problem-oriented medical records in medical practice and medical education and general survey of current records systems (first instalment on three-year grant)	42 000
Mental handicap services project (JRE) to develop ways of improving services (fourth instalment on extended seven-year grant)	13 945
Overseas travel	8 250
Patients' satisfaction studies (DJD) study of opinions of outpatients departments (first instalment of new two-year grant)	2 500
Physiotherapy in general practice (GAP) study of use of physiotherapy in a group medical practice (first instalment on two-year grant)	600

	£
Reading project (FRR)	
development of information system for health and social services in Reading and Berkshire (final instalment on three-year grant)	500
Residential accommodation for visitors to King's Fund (GAP)	
(first instalment on two-year grant)	3 679
Statistical summary (EDH)	
preparation of statistics on independent homes and hospitals	150
Training voluntary help organisers (MCH-WGC)	
planning for an experimental course	5 000
Voluntary service information office (MCH-WGC)	
to develop voluntary work in health services (final instalment on five-year grant)	8 200
	<hr/> £112 995
Total of grants made in 1974	£481 243

Note: Initials in brackets are those of the staff member who can give detailed information on the project concerned. See Staff Directory, pages 34-35, for name and address.

KING'S FUND CENTRE CONFERENCES, MEETINGS AND EXHIBITIONS

LARGE CONFERENCES

Mental Handicap

Employment
New ideas in staff training
Participation by residents
Toy workshop
View of the nurse

NHS and EEC

Denmark
Eire
Germany
Italy

Nursing

Attitudes of patients
Counselling
Nurses' retirement
Nursing and other organisations
Occupational health and counselling
Reporting on patients
Ward activity and learning

Other topics

Admission of patients to hospital
Art for the elderly
Australian health services
Birth control and the reorganised NHS
Caring and communication
Developing pattern of care in general practice
Drug administration and control systems
Drug dependency — progress and problems in London
Fire symposium
Home for the weekend
House journals
Language barrier
Medical use of hospital grounds

Patients as people
Priorities for the professions
Problem drinking in the community
Psychiatric units attached to general hospitals
Psychogeriatric study days
Violence in marriage
Voice of the patient

LUNCH TALKS

Accident and emergency services — Dr Howard Baderman
Sport and health — Dr Roger Bannister
Health services and personal social services: policy and practice — Mr R Clarke
Research into action — Dr A L Cochrane
Health education problems and prospects — Mr A C L Mackie
Rehabilitation in the reorganised NHS — Dr P J R Nichols
Priorities in health care — Mrs Claire Rayner
Extending the role of the nurse — Miss Muriel Skeet

SMALL MEETINGS

Action learning
Alcoholic units discussion group
Art for the elderly
Association of Professions for the Mentally Handicapped
Care for the elderly
Caring for sick or handicapped children at home
Counselling for nurses
Drug dependency discussion group
Evaluation of health centres
Geriatric day hospital
Home care
Hospital planning
Inservice training
Long term care
Management of health centres
Medical recording service

Medical secretaries and receptionists in hospitals
and general practice
Mental handicap adult education
Mental handicap further education
Mental handicap participation
Mentally handicapped abnormal offenders
New health service 1974
Nurses reporting on patients
Nursing and other organisations
Nursing audit
Patient-nurse dependency
Patients are individuals
Patients' satisfaction studies
Priorities for the caring professions
Professional organisations
Psychiatric units attached to general hospitals
Voluntary help organisers' induction day
Ward activity and learning

EXHIBITIONS

Aids to mobility
Multimedia resource centres
Paintings in hospital
Planning for the handicapped
Road to recovery

Note: The Centre also gives hospitality to other organisations
and groups for meetings.

**KING'S FUND COLLEGE
ACADEMIC YEAR 1974/5
COURSES AND SEMINARS**

Administrators' development
Management appreciation for consultants
Management appreciation for senior registrars
Management appreciation for geriatricians
Management development
National administrative trainees

Special and experimental courses and seminars

Administrators of independent hospitals
Area health authorities
Area teams of officers
Coordinated teaching for nurses
Community health councils (pilot seminar)
District management teams (pilot seminar)
Financial managers (pilot seminar)
Health service planning
Industrial relations
Long stay care
Management information
Secretaries of community health councils
Voluntary help organisers

Courses with overseas membership

Belgian administrative students
Canadian College of Health Service Executives
International course in hospital administration
Health service organisation for American students
King's Fund international seminar for administrators

EMERGENCY BED SERVICE

General practitioners usually have their own direct links with local hospitals for urgent admissions. The Emergency Bed Service handles cases, at the request of general practitioners in the Greater London area, in which the normal direct approach to hospitals has been unsuccessful. The service saves time for patients and trouble for GPs. It covers medical and surgical, but not psychiatric, emergencies.

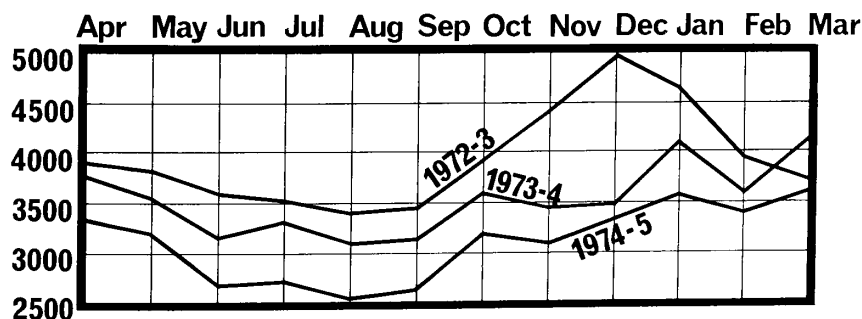
It can ensure acceptance of responsibility for a patient by a local hospital through the medical referee procedure. This is an arrangement whereby the nearest suitable hospital becomes responsible for seeing a patient with a view to admission when applications through normal EBS channels have failed. Regional medical admissions officers, who are seconded from the Thames regional health authorities as medical advisers, can refer patients to the medical referees designated within districts. Once the medical referee procedure is invoked, the hospital concerned must accept responsibility for the patient and the medical referee has full authority to say what is to be done about the admission of a patient refereed in this way. This procedure is held in reserve as much as possible, and by far the greater number of applications are accepted without it. It becomes of special importance in times of stress, such as outbreaks of influenza.

The EBS performs other tasks such as arranging admission for terminally-ill patients to St Joseph's Hospice, Hackney, and answering enquiries for the Medic-Alert Foundation. This organisation keeps records of special medical needs of its subscribers. Its master index is held by the EBS and, in an emergency, information from the records can be obtained by a doctor or other authorised person by a reverse-charge telephone call from anywhere in the world.

The EBS is uniquely placed to form an accurate picture of all aspects of admission of patients to hospitals. It is in close working contact with, and can give advice and information to, those concerned, though it is not an information bureau for the general public. The Fund's publication, *Admission of Patients to Hospital (1973)*, reports a study which came from an idea put forward by the EBS, whence a sequel to take stock of the situation is also to be run.

The chart shows admissions dealt with annually from April 1972 to March 1975. The EBS Committee is examining afresh the trends emerging from these and other statistics in order to determine how the EBS can operate to best effect within the reorganised structure of the health service.

ADMISSIONS



GENERAL COUNCIL AND COMMITTEES

GENERAL COUNCIL

Governors:

**HRH Princess Alexandra, The Hon Mrs Angus
Ogilvy GCVO
Lord Ashburton KG KCVO JP
Lord Cottesloe GBE TD**

The Lord Chancellor
The Speaker of the House of Commons
The Bishop of London
Cardinal Heenan
The Reverend G A D Mann HCF
The Chief Rabbi
The Lord Mayor
The Chairman of the Greater London Council
The Governor of the Bank of England
The President of the Royal College of Physicians
The President of the Royal College of Surgeons
The President of the Royal College of Obstetricians
and Gynaecologists
The President of the Royal College of General
Practitioners
The President of the Royal College of Nursing
The President of the Institute of Health Service
Administrators
The Chairman of each of the four Thames Regional
Health Authorities
Professor Brian Abel-Smith MA PhD
G F Abercrombie VRD MD
Lord Ashburton KG KCVO JP
H C Belk MA LLB
Sir Desmond Bonham-Carter TD
Sir Robin Brook CMG OBE
Lady Brooke of Cumnor DBE
Sir Andrew Carnwath KCVO
Lady Clitheroe
P H Constable OBE
C A Cooke OBE LLD JP
Lord Cottesloe GBE TD
J O F Davies CBE MD FRCP DPH
R J Dent
Peter F Evans
Hugh Farmar
Arthur Franks OBE
Sir George Godber GCB DM FRCP DPH FFCM

Sir Maurice Hackett OBE
Lady Hamilton OBE MA
Brigadier Sir Geoffrey Hardy-Roberts KCVO CB CBE
Michael Hargreave VRD
D G Harington Hawes
S C Harris OBE JP
Lord Hayter
G P E Howard
Lord Inman PC JP
G J A Jamieson
Sir Francis Avery Jones CBE MD FRCP
C E Kevill-Davies CBE JP
Captain A Lade OBE RN
Edgar Lawley CBE
Lord Luke TD DL JP
W G MacKenzie VMH
C J Malim CBE
Sir Rennie Maudslay KCVO MBE
R A Mickelwright OBE FHA
Sir Frederick Minter GCVO JP
George Mitchell CBE JP
A H Montgomery OBE
Lord Moran MC MD FRCP
Hon Mrs John Mulholland DCVO
Marquis of Normanby CBE
Major R O'Brien MVO TD
H M O'Connor OBE TD
Commander R W Peers RN
Sir Michael Perrin CBE
Dame Muriel Powell DBE
Sir John Prideaux OBE
Sir Max Rayne
Miss A B Read MBE
Sir John Richardson Bt MVO MD FRCP
Sir Kenneth Robson CBE MD FRCP
Lanning Roper
Sir James Paterson Ross Bt KCVO MS FRCS LLD
Sir Graham Rowlandson MBE JP FCA GLC
Miss M J Roxburgh OBE
Hon Peter Samuel MC TD
The Baroness Serota
Professor G A Smart BSc MD FRCP
George Somerville MD DPM
Selwyn Taylor DM MCh FRCS
Professor Sir Ronald Tunbridge OBE MD FRCP JP
Lord Wardington
Major Simon Whitbread JP
Sir Edgar Williams CB CBE DSO
Sir Hugh Wontner CVO
Sir Henry Yellowlees KCB FRCP FFCM

MANAGEMENT COMMITTEE**Lord Hayter Chairman**

Sir Robin Brook CMG OBE

R J Dent

Sir George Godber GCB DM FRCP DPH FFCM

Sir Francis Avery Jones CBE MD FRCP
(Deputy Chairman)

Mrs B F R Paterson CBE JP

Dame Muriel Powell DBE

Professor G A Smart BSc MD FRCP

Selwyn Taylor DM MCh FRCS

Publications Panel**Sir Robert Lusty Chairman**

J O F Davies CBE MD FRCP DPH

Professor W W Holland MD BSc

Sir Francis Avery Jones CBE MD FRCP

FINANCE COMMITTEE**R J Dent Chairman**

The Governor of the Bank of England

Lord Catto

Sir Eric Faulkner MBE

G J A Jamieson

Sir Max Rayne

Lord Wardington

ESTATES COMMITTEE**R J Dent Chairman**

J R G Bradfield PhD MA

C A Cooke OBE LLD JP

G J A Jamieson

Sir Max Rayne

AUXILIARY HOSPITALS COMMITTEE**Richard Hough Chairman**

S N Abbott

H C Belk MA LLB

C C Croggon

Miss K M Cunnew AIMSW

Professor A N Exton-Smith MD FRCP

Mrs Geoffrey Inchbald

Lieutenant-Colonel James Innes JP

R J Kirtton CBE

Sir Robert Lusty

Barbara Morton OBE MB BS

Miss B N Perry AIMSW

D E Yarrow MB BCh DCH

EDUCATION COMMITTEE**The Baroness Serota Chairman**

W G Cannon MA FHA

Miss W Frost OBE

W J McQuillan MB BCh FFCM DPH DCH LM

R M Nicholls BA DSA AHA

B L Salmon CBE

Professor G A Smart BSc MD FRCP

Miss A M W White CBE SRN RFN SCM

Adviser on Hospital Law

S R Speller OBE LLB PhD

EMERGENCY BED SERVICE COMMITTEE
Sir George Godber GCB DM FRCP DPH FFCM
Chairman

D B Caro MB ChB FRCS
Miss G O Gardiner OBE SRN SCM BTA Cert
D J Marlow AHA
J S Norell MRCGP
K R D Porter MBE FRCP
R H Sandford Smith FCIS FBIM
J A Saunders MA MRCGP

HOSPITAL GRANTS COMMITTEE
Sir Robin Brook CMG OBE Chairman

Mrs C B Bicknell
J J Bradley MB FRCP FRCPsych DPM
Nigel D Compston MD FRCP
Captain A Lade OBE RN
A L Markham
R C Millward FHA FCCS
A H Montgomery OBE
J K Morrison MB BCh BAO FRCOG
Hon Mrs John Mulholland DCVO
Miss Eileen Skellern OBE SRN RMN RNT
D Somerville CB
A R Worters MB BS DPM

Garden Advisers
W G MacKenzie VMH
J Newell
Lanning Roper

Dietetic Adviser
Miss B R Stanton SRD

KING'S FUND CENTRE COMMITTEE
Sir Francis Avery Jones CBE MD FRCP
Chairman

D H D Burbridge OBE MRCS LRCP DPH
Miss J F Carré SRN SCM QN HV
Raymond T Clark OBE MA JP
P J Fletcher
J Fry OBE MD FRCS LRCP FRCGP
W G Harding FRCP FFCM DPH
K R D Porter MBE FRCP
Miss Rosemary Stewart PhD MSc(Econ)
G H Weston FHA
Miss J M Wheeler BA SRN SCM RNT

RESEARCH AND DEVELOPMENT COMMITTEE

Sir George Godber GCB DM FRCP DPH FFCM
Chairman

H Baderman BSc FRCP
Miss C Biddulph SRN SCM BTA RNT
J L T Birley MRCP DPM
Professor George W Brown BA PhD
Miss Oriole Goldsmith MA FHA
J I H Hadfield FRCS
Sir Francis Avery Jones CBE MD FRCP
R L Lindon MRCS LRCP FFCM DPH DCH
Professor Ian McColl MS FRCS
W J McQuillan MB BCh FFCM DPH DCH LM
Professor D C Morrell MRCP FRCGP
W E Randall DFC AFC FCII
Miss Rosemary Stewart PhD MSc(Econ)
Peter Westland

HOSPITAL VISITORS

G F Abercrombie VRD MD
Professor W J H Butterfield OBE MD FRCP
F S Cooksey CBE MD FRCP
O P Dinnick MB FFARCS
P E Thompson Hancock FRCP
R S Handley OBE MD FRCS
Howard G Hanley CBE MD FRCS
J B Harman MD FRCP FRCS
Kenneth Harris MD FRCP
P J Helliwell MB FFARCS
M I A Hunter MD FRCP
W N Mann MD FRCP
Sir Ralph Marnham KCVO MChir FRCS
S P Meadows MD FRCP
R W Nevin TD MB FRCS
Sir John Richardson Bt MVO MD FRCP
Sir Kenneth Robson CBE MD FRCP
Sir James Paterson Ross Bt KCVO MS FRCS LLD
A H M Siddons MChir FRCS
J F Stokes MD FRCP
Norman Tanner MD FRCS FACS
Selwyn Taylor DM MCh FRCS
Sir Edward Tuckwell KCVO MCh FRCS
Sir Brian Warren MRCS LRCP

Professor Brian Abel-Smith MA PhD
Lady Brain
Lady Brooke of Cumnor DBE
Lady Clitheroe
Lady Compton
F M Cumberlege
J A M Ellison-Macartney CBE TD
Arthur Franks OBE
Lady Hamilton OBE MA
Sir Patrick Hamilton Bt MA
K Miller Jones
R J Kirton CBE
Captain A Lade OBE RN
H J Lester CBE FCA JP
Lady Llewelyn-Davies
C J Malim CBE
The Dowager Viscountess Monckton of
Brenchley CBE
H R Moore CBE
Hon Mrs John Mulholland DCVO
Lord Northbrook
Major R O'Brien MVO TD

H M O'Connor OBE TD
Sir Michael Perrin CBE
Sir Herbert Thompson CIE
Lieutenant-Colonel R P Tong OBE
Sir Reginald Wilson

STAFF DIRECTORY

KING'S FUND HEAD OFFICE

14 Palace Court W2 4HT

Telephone: 01-727 0581

Secretary: G A Phalp CBE TD
Deputy Secretary: E D Halton
Assistant Secretary: Elizabeth Lucas

Accountant: A B Chappell IPFA
Assistant Accountant: Mrs K Gomez
Estates Administrator: Lieutenant-Colonel
J D Goodship
Grants Secretary: E D Halton

General Enquiries: Mrs P I Wynne-Ellis

KING'S FUND CENTRE

24 Nutford Place W1H 6AN

Telephone: 01-262 2641

Director: M C Hardie MA FHA (until July 1975)
W G Cannon MA FHA (from July 1975)

Assistant Directors: B Brookes Dipl Arch RIBA
Miss J B Craig SRN RSCN
D J Downham MBE DMA FHA
K Morton BA FHA

Administrative Officer: A F J Chidgey
Catering Officer: Miss E J R Kydd AMIMA
Conference Secretary: Mrs M E Aston
Designer-Draughtsman: D G Ewbank
Equipment Adviser: S G Wakeling
Exhibition Officer: Mrs W M Arnett-Rayson SRN RFN
Nursing Officer: Mrs H G Edwards SRN Dip Soc
Project Officer: Mrs J Rush SRN Dip Soc
Research Officer: Miss M D Hinks BA FHA

LIBRARY AND INFORMATION SERVICES

Librarian: Mrs J M B White ALA
Assistant Librarian: Mrs M E Gordon BA Hons
Information Officer: R G Bennett

SPECIAL PROJECT

Development of Services for the Mentally Handicapped

Associate Director of the Centre:
J R Elliott MBE FHA

KING'S FUND COLLEGE
2 Palace Court W2 4HS
Telephone: 01-229 9361

Director of Education: Frank Reeves OBE FCA FHA
Director of Studies: P J Torrie FWSOM

Tutors:

N Bosanquet BA MSc(Econ)
R H Colbourne BSc EdM
M W Cuming MA FIPM
Miss F M Dixon BA
Miss S A G Garrett SRN RNT
J D Hague Dip Soc Studies AHA
Miss M D Hamilton BA AHA
D M Hands AHA AMBIM
M Schofield MA DSA AHA

Administrator: B S Satchell AHA MRSH
Registrar: Miss B Steele
Librarian: Mrs N M Badger
Information Officer: H Lichterman

Visiting Adviser: Sir Bruce Fraser KCB

KING'S FUND EMERGENCY BED SERVICE
Fielden House
London Bridge Street SE1 9SG
Telephone: 01-407 7181

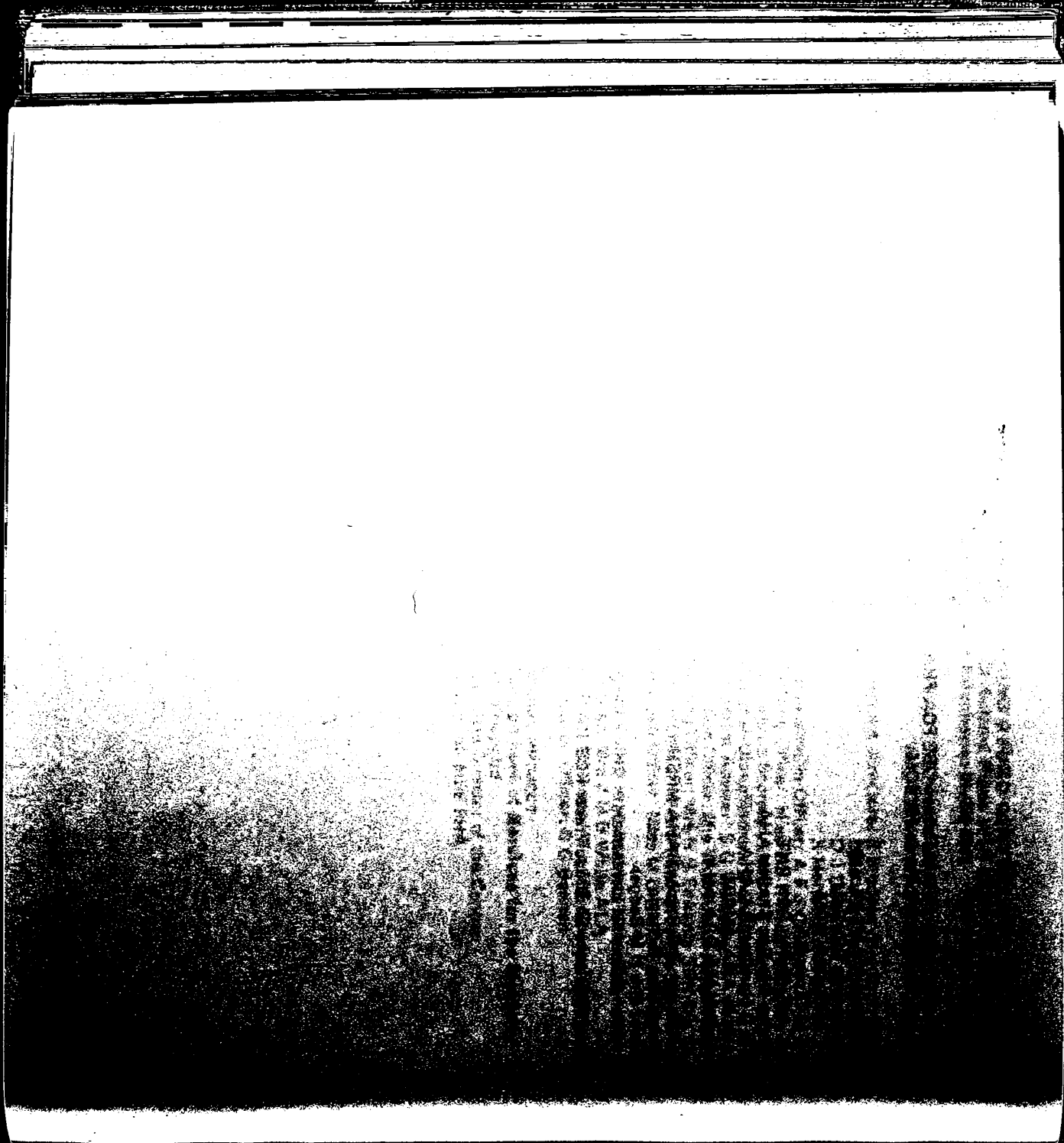
Secretary: Irfon Roberts MA FHA

Deputy Secretary: Miss Rita V Sharpe

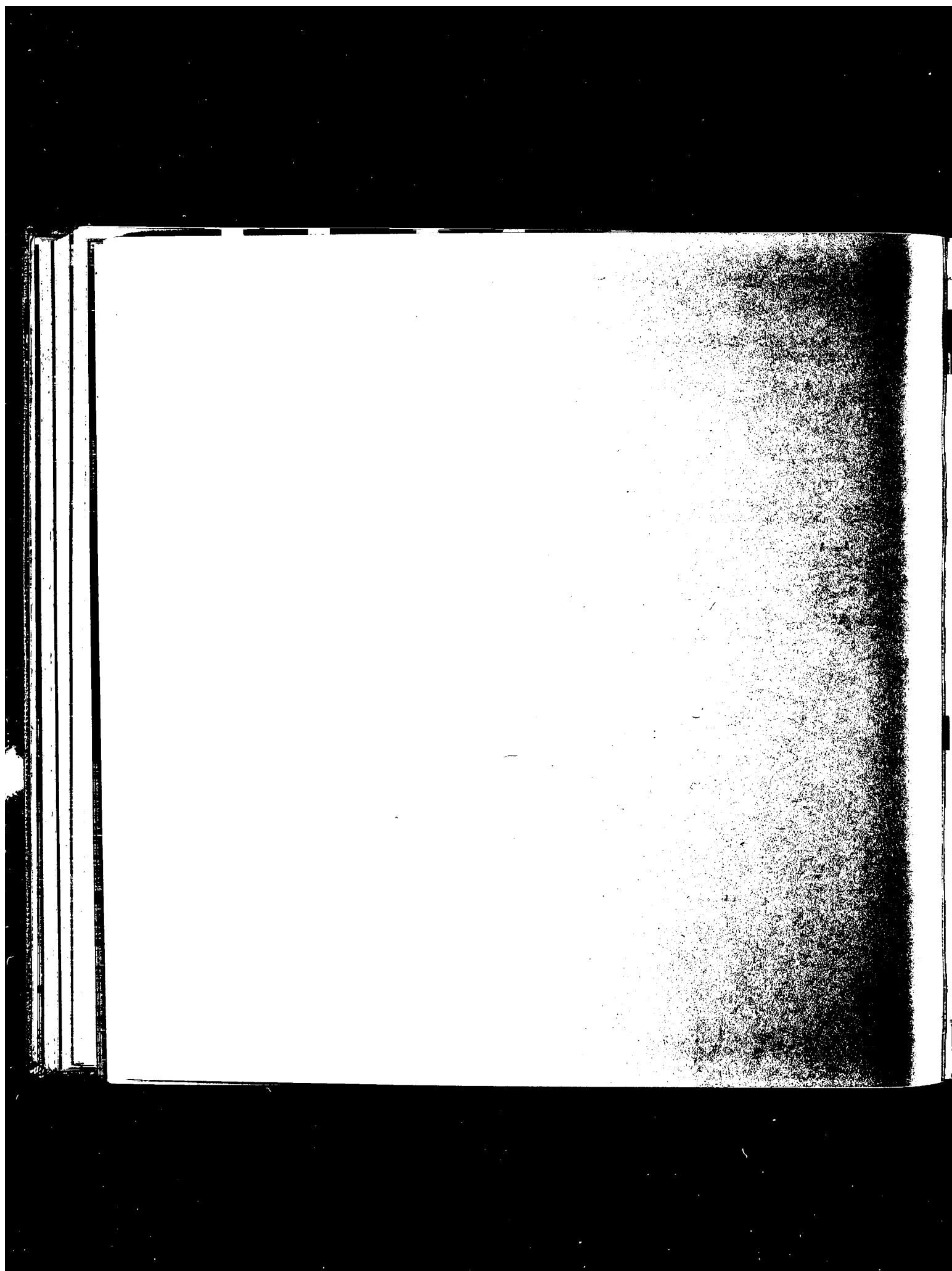
Senior Watchkeepers: Miss Monica Craig
Mrs Daphne MacLean MBE
Miss Thelma Park
Miss Mary Woodcock

Regional Medical Admissions Officers:

A de Silva MB BS
D R V Prys-Jones MRCS (Eng) LRCP (Lond)



**FORMS FOR USE IN CONNECTION WITH
LEGACY, ANNUAL SUBSCRIPTION OR
DONATION, BANKER'S ORDER AND
SEVEN-YEAR COVENANT**



LEGACY

'I give free of duty to KING EDWARD'S HOSPITAL FUND FOR LONDON the sum of £_____ to be either expended in such manner or invested from time to time in such investments (whether authorised by the law for the time being in force for the investment of Trust Funds or not) or partly expended and partly invested as the Governors and General Council for the time being of the Fund shall in their absolute and uncontrolled discretion think fit. And I direct that the receipt of the Treasurer for the time being of the Fund shall be a good and sufficient discharge to my Executors.'

Residue

'I give all my property not otherwise disposed of by this my Will subject to and after payment of my funeral and testamentary expenses to KING EDWARD'S HOSPITAL FUND FOR LONDON, to be either expended, etc., etc. (as above).'

TABLE

CHAPTER I

CHAPTER II

CHAPTER III

CHAPTER IV

CHAPTER V

CHAPTER VI

CHAPTER VII

CHAPTER VIII

CHAPTER IX

CHAPTER X

CHAPTER XI

CHAPTER XII

CHAPTER XIII

CHAPTER XIV

CHAPTER XV

CHAPTER XVI

CHAPTER XVII

CHAPTER XVIII

CHAPTER XIX

CHAPTER XX

CHAPTER XXI

CHAPTER XXII

CHAPTER XXIII

CHAPTER XXIV

CHAPTER XXV

CHAPTER XXVI

CHAPTER XXVII

CHAPTER XXVIII

CHAPTER XXIX

CHAPTER XXX

FORM FOR ANNUAL SUBSCRIPTION OR DONATION

Date _____ 19 _____

To the Secretary

KING EDWARD'S HOSPITAL FUND FOR LONDON
14 PALACE COURT LONDON W2 4HT

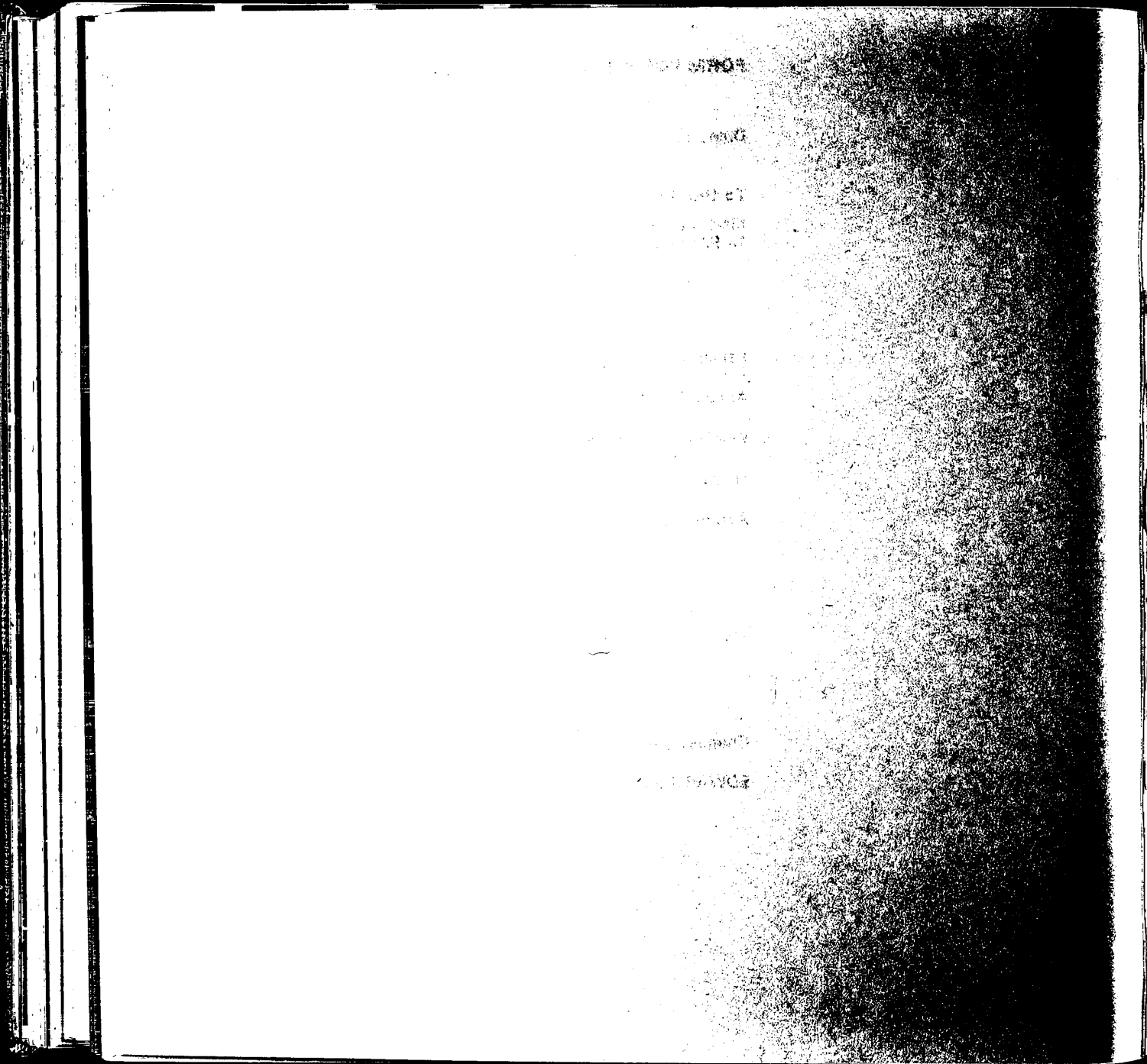
I enclose cheque for the sum of £ _____ as an
Annual Subscription/Donation to the Fund.

Kindly acknowledge receipt to the following address

Name _____

Address _____

Cheques and Postal Orders should be made payable to 'KING
EDWARD'S HOSPITAL FUND FOR LONDON'.



STANDING ORDERS FOR BANKERS

Date _____ 19 _____

To (Name of Bank _____
and Branch) _____

Please pay on the _____ day of _____ 19 _____

to the BANK OF ENGLAND LONDON EC2R 8AH for the credit of

KING EDWARD'S HOSPITAL FUND FOR LONDON, a/c No. 53600002,

the sum of _____

and continue to pay the same amount on the _____

in each future year until further notice.

Signature _____

£	p
---	---

Name _____
(for postal purposes)

Address _____

STANDARD FORM NO. 64

1964

To: Mr. J. Edgar Hoover
Director, Federal Bureau of Investigation

From: Mr. J. Edgar Hoover

Subject: [Illegible]

Reference is made to [Illegible]

and [Illegible]

on [Illegible]

in [Illegible]

[Illegible]

INCOME TAX ON ANNUAL SUBSCRIPTIONS

Annual subscribers, by filling up the following form of agreement for seven years, enable the Fund to recover income tax on their subscriptions.

For example, if a contributor who now subscribes £30 per annum, enters into an agreement in the form below, filling in the figure £30, the result will be

- (i) the subscriber sends a cheque for £30, with a certificate that he has paid income tax on the amount which, after deducting income tax, leaves £30 (i.e., with income tax at 35p in the £, £46·15); the Fund can supply forms of certificate if desired;
- (ii) the King's Fund recovers income tax from the Inland Revenue;
- (iii) the contributor appears as a subscriber of £46·15.

The Fund would be pleased to give further information if desired. It is sometimes possible to furnish alternative forms of agreement to meet special circumstances.

I, _____
of _____

HEREBY COVENANT with KING EDWARD'S HOSPITAL FUND FOR LONDON
that for a period of seven years from the date hereof or during my life whichever
period shall be shorter I will pay annually to the said Fund such a sum as will after
deduction of income tax leave in the hands of the Fund the net sum of £ _____

(_____)

(words) the first of such annual payments to be made on the (a) _____ day of
_____ 19____ and the six subsequent annual payments to be made on the
same day in each of such subsequent years all such sums to be paid from my general
fund of taxed income so that I shall receive no personal or private benefit in either of
the said periods from the said sums or any part thereof.

IN WITNESS whereof I have hereunto set my hand and seal this (b) _____ day
of _____ 19____

SIGNED, SEALED AND DELIVERED by the above-
named in the presence of

Signature _____

Address _____

_____ L.S.

(Signature)

Occupation _____

(a) The date must be later than the date of signing (b)

Notes as to Completion of Agreement

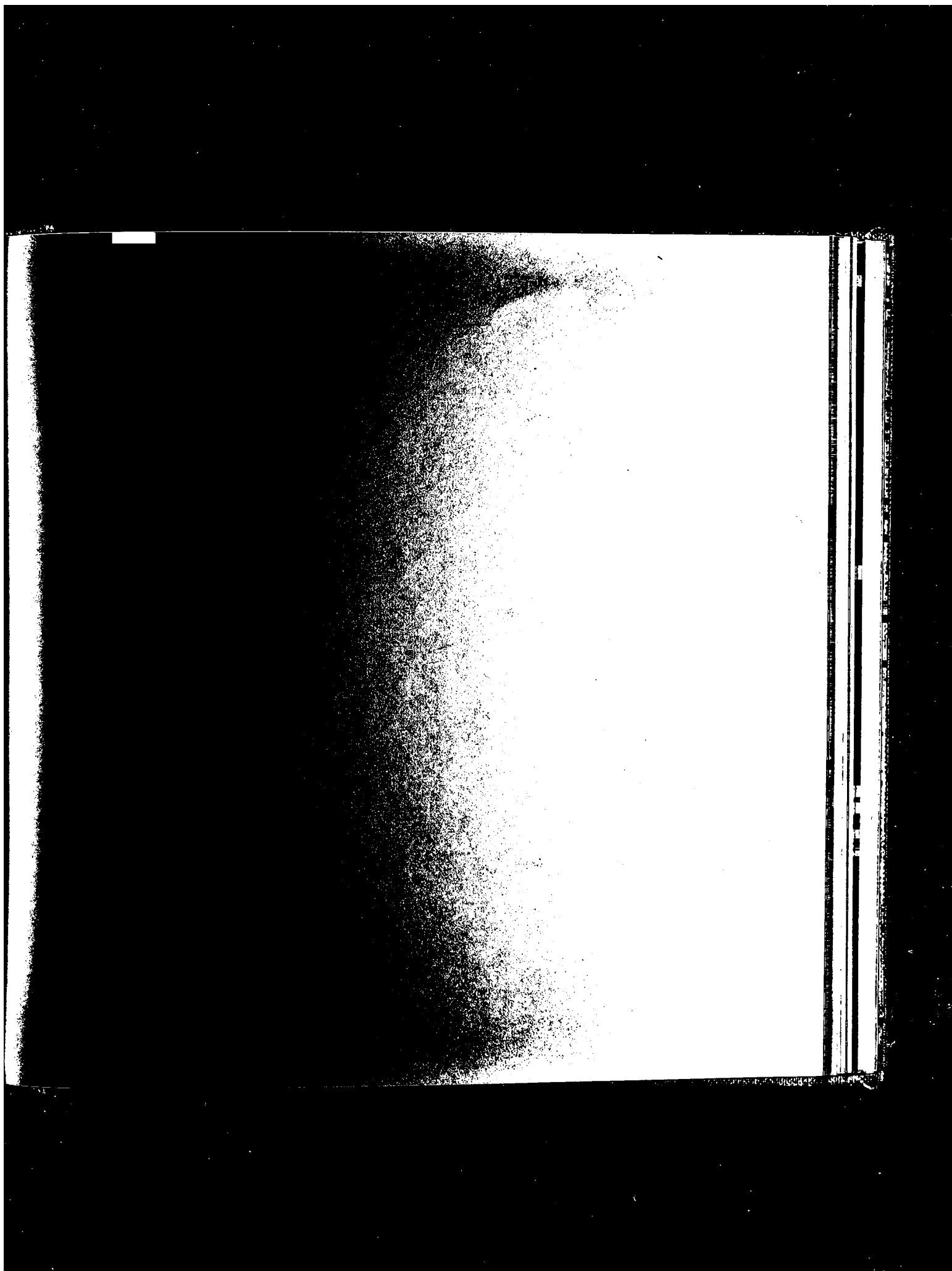
- (1) The term of seven years commences from the date of signature.
- (2) The directions for filling in the dates at (a) and (b) should be carefully observed.
- (3) If the seven annual payments are to be made under Banker's Order the date at (a) should be furnished to the Bank.
- (4) The agreement duly completed as above should be forwarded to the King's Fund as soon as signed in order that it may be stamped within the allotted time.

...the ... of ...

the 1990s, the number of people in the world who are under 15 years of age is expected to increase from 1.1 billion to 1.5 billion. The number of people aged 65 and over is expected to increase from 250 million to 450 million. The number of people aged 15 and over is expected to increase from 3.5 billion to 4.5 billion. The number of people aged 15 and over is expected to increase from 3.5 billion to 4.5 billion. The number of people aged 15 and over is expected to increase from 3.5 billion to 4.5 billion.

[The page contains faint, illegible markings.]

[illegible]



© 1975 King Edward's Hospital Fund for London
Printed in England by Alabaster Passmore & Sons Limited
and designed by Steve Storr.