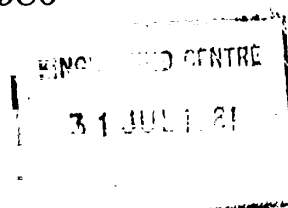


King Edward's Hospital Fund
for London
Annual Report 1980



**KING EDWARD'S HOSPITAL FUND
FOR LONDON**

Patron: Her Majesty The Queen

Governors: HRH Princess Alexandra,
The Hon Mrs Angus Ogilvy GCVO
Lord Cottesloe GBE TD
Sir Andrew H Carnwath KCVO DL

Treasurer: R J Dent

Chairman of the Management Committee:
Lord Hayter KCVO CBE

Secretary: R J Maxwell

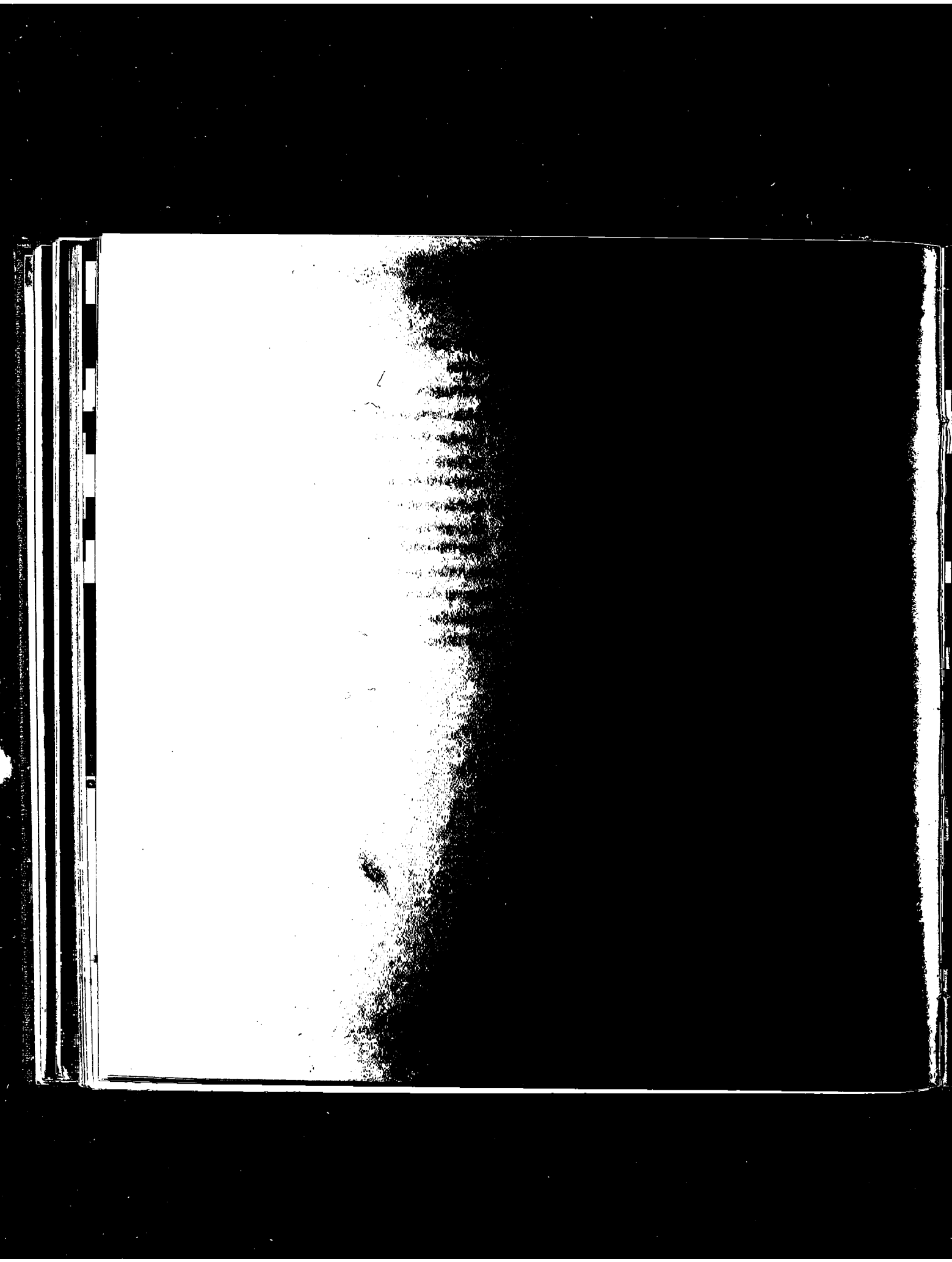
KING'S FUND CENTRE

31 JUL 1981

14 Palace Court London W2 4HT
Telephone: 01-727 0581

CONTENTS

	page
Report 1980	5
Finance	11
Contributors	14
Grants made in 1980	
London Programme	15
to National Health Service and local authorities	15
to independent hospitals and homes	16
to organisations, educational centres and individuals	17
in-house grants	20
General Council	21
Committees	22
Staff Directory	25



REPORT 1980

At the turning point between the 1970s and the 1980s, it is natural to look back at the activities of the last decade and forward to the new one. For the Fund, high points of the 1970s included the move of the King's Fund Centre to new premises in Camden Town – premises which continue to prove themselves an outstanding setting for the library and information services, and for conferences. Towards the end of the decade there was the start of the Jubilee Project, marking the Queen's Silver Jubilee and recalling the Fund's own beginning, which was a permanent memorial to mark Queen Victoria's Diamond Jubilee in 1897. The Fund's objects were the same then as now, and are expressed in the 1907 Act of Incorporation as

'... the support benefit or extension of the hospitals of London or some or any of them (whether for the general or any special purposes of such hospitals) and to do all such things as may be incidental or conducive to the attainment of the foregoing objects'.

The wording of the Act allows wide interpretation, and has enabled the Fund to respond to changing circumstances, including the establishment of the National Health Service and its 1974 reorganisation. The Fund's activity in the education and training of hospital and health service managers, in the provision of library and information services and conference facilities, in publishing, and in experiment and investigation, has extended its influence beyond London. A central activity remains, however, as it has always been, that of making grants to improve hospitals and related health services in London.

The costs of maintaining the King's Fund College and the King's Fund Centre are partly met by attendance fees and, in the case of the Centre, by annual contributions from the Department of

Health and Social Security and the four Thames regional health authorities. These arrangements give some recognition to the work that the two institutions do for the National Health Service. The College, for example, is one of the five educational establishments offering management training to NHS staff, and is the only one in the south of England; while the Centre's services are open to anyone interested in health and social policy, including those working in the NHS. The DHSS and the health authorities regularly review their contributions to help meet rising costs. We appreciate their support.

Even so, the costs to the Fund are considerable and represent more than half the total expenditure of both institutions. We are concerned to ensure that these costs do not undermine the grant-making activity which directly benefits the London hospitals and supports experiment and investigation in the practice and organisation of health care. Two other concerns, of no less importance, are safeguarding the Fund's status as an independent charitable foundation and fulfilling its responsibility as an employer. These considerations are forming the base for rethinking the Fund's long-term future policy.

For the present, the Management Committee has concluded that, with the impending further reorganisation of the NHS and in the continuing cold financial climate, there will be no sudden change of policy and no cut in activity on behalf of London. Indeed, the London Programme, mentioned in last year's report, represents a firm commitment by the Fund to strengthen its assistance to London's health services. Meanwhile, ways of reducing costs within the Fund are being explored: for example, by further savings on heating and lighting and other everyday expenses; by letting premises to other organisations; and by careful review of new appointments when staff retire. In addition, we are seeking ways to increase our income from new gifts.

GRANTS FOR HOSPITALS

The grant-making committees, rather than simply wait for applications to come in, are continuing to take the more positive approach of trying to identify for themselves how the Fund can best help London. The Jubilee Project, which drew to a close this year, is an example of such initiative. The object was two-fold: practical help for ten hospitals to renovate some of their oldest wards and, thereby, to raise the morale of staff during a time of much unrest and disappointment in the health services in London. The ten were Dulwich Hospital, Hackney Hospital, Hammersmith Hospital, Hither Green Hospital, The Prince of Wales's Hospital, Queen Elizabeth's Hospital for Children, St Charles' Hospital, St Stephen's Hospital, South London Hospital for Women and Children and Whittington Hospital. When the schemes were finished, staff from the hospitals collaborated with the Fund in mounting an exhibition at the Centre of 'before and after' plans and pictures of their wards.* The exhibition was opened by Dr Gerard Vaughan MP, Minister for Health. HRH Princess Alexandra, our Royal Governor, visited the exhibition and also the Whittington Hospital where she opened the renovated ward.

The total sum of grants allocated to the Jubilee Project was £1 300 000. It is not often that so expensive a project can be undertaken, though occasionally a major scheme can be funded. One such was the grant of £150 000 made this year to St Mary's Wing, Whittington Hospital, for renovating part of the nurses' home. In this project, the Fund will be helping Camden and Islington Area Health Authority, which is itself contributing substantially to improve living conditions for 48 nurses, and will be calling attention to the grossly neglected state of staff accommodation in London's hospitals generally. We hope this concern will be taken up by others.

Most grants for improvements to buildings and equipment are very much smaller, though they still

amount to a large proportion of the grants allocation during a year. Eighteen smaller grants for these purposes were made to NHS hospitals serving London, the total amount being just over £165 000; and 38 independent hospitals, homes and special schools, including those run by voluntary organisations, received grants amounting to a total of about £150 000.†

THE LONDON PROGRAMME

An executive committee, under the chairmanship of Professor Brian Abel-Smith, has been formed from the working party set up in 1979 under the leadership of Sir Francis Avery Jones to consider how the Fund could help tackle the special problems of health care in the inner-city areas. The committee's terms of reference are to look at these problems in relation to London as a whole; to decide where the Fund should provide support; to consider and, if necessary, to solicit proposals; to make grants; and to pursue a selected series of activities in a methodical way over several years.

The committee has selected six priorities in which the Fund could most usefully be active: primary care in the inner-city and its relationship with secondary care; accident and emergency services; planning and evaluation of inner-city community hospitals; dissemination of information about London's needs and services; inner-city maternity services; and issues affecting the future of teaching hospitals and referral services.

During the coming years, the committee will be mounting a programme of discussion and study for these purposes. An initial allocation of £300 000 has been made by the Management Committee. Reports and other publications will be coming out from time to time. Information may be obtained from the Director of the Centre.

*A folder containing the building plans and a commentary on the project is available at £3.50 from the King's Fund Centre.

†See pages for lists 15-20 of grants made during the year.

PREPARING FOR THE REORGANISED NHS

The College and the Centre have been planning a programme in preparation for the forthcoming reorganisation of the administrative structure of the NHS. The approach is different from that taken during the more radical reorganisation in 1974 when a more comprehensive programme of courses, seminars and conferences was mounted. This time, the plan is to concentrate upon the people who will have most influence on the organisation and operation of the new structure. Details of the programme are being announced in *KF News*, the quarterly newsletter of the Fund. The programme includes short seminars for the chairmen of the new district health authorities, for members of authorities and for members of district management teams. Should the need arise, events will also be planned for other specific groups. The College is also taking part in a joint scheme with the School of Advanced Urban Studies, University of Bristol, and the Health Services Management Centre, University of Birmingham, to provide courses for members of the new DHAs.

These activities in connection with reorganisation are extra to the College's development of its own training commitments. Courses in corporate management for senior managers are being prepared. The fellowship scheme, sponsored jointly with the Birmingham centre, has continued. Both these undertakings follow recommendations of the Thwaites working party report, *The Education and Training of Senior Managers in the National Health Service* (King's Fund 1977). The first pilot course of the corporate management development programme is planned for the autumn of 1981.

Two follow-up seminars were arranged for the administrators who took part in the study directed by Dr Rosemary Stewart, reported in *The District Administrator in the NHS* (King's Fund 1980). From these seminars further training needs emerged. The

College plans to include these and others extracted from the report of the study in future courses.

OVERSEAS CONTACTS

The Fund has continued to sponsor study and travel for individuals and groups, and to strengthen its relationships with the charitable foundations and health services of other countries. Within the travelling fellowship scheme for London doctors, an exchange of senior house officers from London hospitals and their counterparts in European medical centres is being supported. The experiment, proposed by St Bartholomew's Hospital Medical School, is to run for three years and, if successful, the EEC Commission will be asked to take it over. The Fund also met the travelling expenses of two nurses who were invited to attend the nursing management training course at the University of California, and awarded a number of small travel grants to senior managers for overseas study. Once again, the Fund sent a multidisciplinary course to North America, this time to Canada.

One new venture is a study known as the 'management survey project' which the Fund is supporting. A team of American and British researchers and administrators has been formed to undertake the project. Pilot surveys of the accreditation system in the USA, including study of how the system is changing, will be followed by surveys of management audit in selected health districts in Britain. The initial surveys will be carried out in 1981.

PUBLISHING

Four new books came out in 1980. In addition to Dr Stewart's report (see above), these were *Progress in Geriatric Day Care*, a follow-up study by Professor J C Brocklehurst and Dr J S Tucker; *The People's Voice in the NHS*, a review of the first five years of community health councils, by Ruth Levitt; and *Just Me*, an illustrated book of songs for handicapped and pre-school children by Jean Turnbull and Steve

Storr. Annual sales of titles distributed and marketed in Britain and abroad by Pitman Medical showed an increase of 70 per cent over the last year, with the new titles selling particularly well.

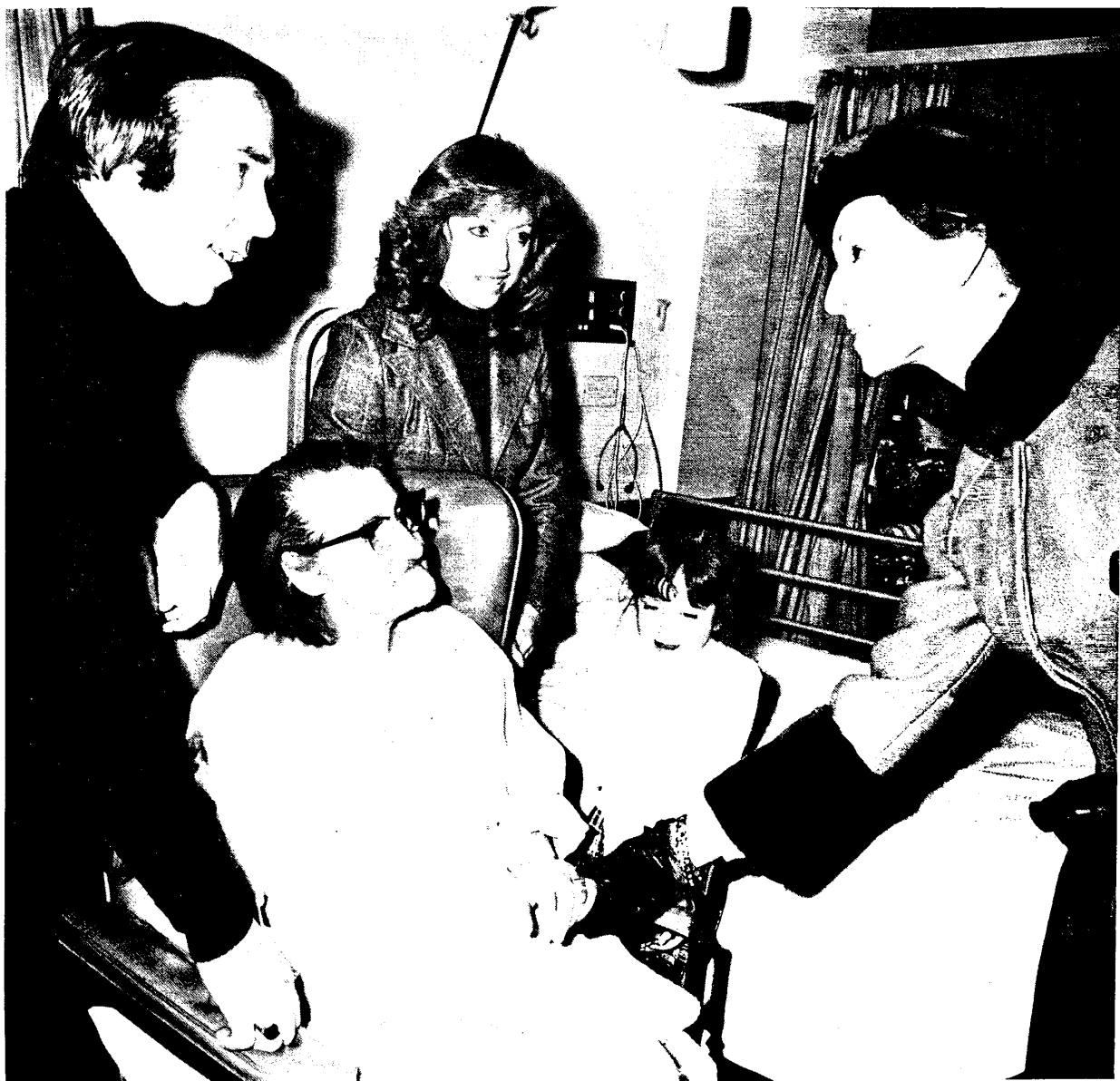
The project papers produced and distributed by the King's Fund Centre included a series of 17 working papers of the Royal Commission on the National Health Service, and a new title, *Closure and Change of Use of Health Facilities*.

The policy of pricing books to cover costs of production and distribution has continued. While publishing has become an important activity for the Fund, with an influence far beyond London, we believe that publications should normally be self-financing, in tune with the general policy of controlling operating costs so that the Fund's grant-making capacity is maintained.

MR G A PHALP

This report would be incomplete without a special note on the retirement in September of Mr Geoffrey Phalp CBE TD, Secretary of the King's Fund for 12 years. His unfailing good nature, and the depth of his understanding and knowledge about the health service and its people, have done much to guide the Fund's work in those years and to prepare its future course.

Picture by John Cogill



Princess Alexandra on a tour of the Whittington Hospital after reopening the ward which was renovated during the Jubilee Project.

FINANCE

The following pages (12 and 13) contain abridged financial statements extracted from the full accounts of the King's Fund, which are available on request. The statements show that at 31 December 1980 the total market value of the Fund's assets was £35 827 000 (1979 £30 128 000) and the income for the year £2 367 000 (1979 £2 425 000).

The reduction of £58 000 in income in 1980 is due mainly to the lower level of interest obtained from funds placed on deposit and awaiting disbursement. The Fund's general expenditure before the allocation of grants is £228 000 greater than the corresponding figure for 1979 despite the many economies that have been made and are continuing to be made by the Management.

As mentioned in the preceding pages an amount of £300 000 was made available in 1980 for a special project, the London Programme. After setting aside £840 000 for grants, the funding of this project has led to an excess of expenditure over income of £21 000, which has been met by a transfer from General Fund.

The Treasurer gratefully acknowledges all contributions that have been made to the Fund during the past year, and will always welcome any new sources of finance which will enable the Fund to maintain and extend its activities in the field of health care.

Forms for use in connection with donations and payments under deed of covenant will be found enclosed with this report.

Bankers: Bank of England
Baring Brothers & Co Limited
Midland Bank Limited

Auditors: Deloitte Haskins & Sells

Solicitors: Turner Peacock

KING EDWARD'S HOSPITAL FUND FOR LONDON

ABRIDGED STATEMENT OF ASSETS AND LIABILITIES AT 31 DECEMBER 1980

	Book Value 31 December		Valuation 31 December	
	1980 £	1979 £	1980 £	1979 £
Capital Fund				
Investments				
Quoted securities	6 302 597	5 137 337	9 567 399	6 901 367
Unquoted securities	36 930	46 391	82 404	87 566
	<u>6 339 527</u>	<u>5 183 728</u>	<u>9 649 803</u>	<u>6 988 933</u>
Current assets	589 412	936 173	589 412	936 173
	<u>6 928 939</u>	<u>6 119 901</u>	<u>10 239 215</u>	<u>7 925 106</u>
General Fund				
Investments				
Quoted securities	7 602 958	7 580 103	9 522 937	8 102 140
Unquoted securities	43 149	22 749	67 554	27 225
Properties, including Fund premises	8 093 833	8 117 849	16 880 000	15 067 000
Reversionary interests – nominal value	1	1	—	—
	<u>15 739 941</u>	<u>15 720 702</u>	<u>26 470 491</u>	<u>23 196 365</u>
Net current (liabilities)	(898 224)	(1 053 886)	(898 224)	(1 053 886)
	<u>14 841 717</u>	<u>14 666 816</u>	<u>25 572 267</u>	<u>22 142 479</u>
Special Funds				
Investments				
Quoted securities	23 158	52 716	12 490	45 109
Current assets	2 785	15 756	2 785	15 756
	<u>25 943</u>	<u>68 472</u>	<u>15 275</u>	<u>60 865</u>
Net Assets	<u>£21 796 599</u>	<u>£20 855 189</u>	<u>£35 826 757</u>	<u>£30 128 450</u>

ABRIDGED INCOME AND EXPENDITURE ACCOUNT YEAR ENDED 31 DECEMBER 1980

	£	1980	£	1979	£
Income					
Securities		1 595 184		1 669 357	
Properties		759 060	2 354 244	738 971	2 408 328
Donations		8 183		12 662	
Legacies allocated to income		5 008	13 191	4 497	17 159
			2 367 435		2 425 487
Excess of Expenditure over Income for the year, transferred from General Fund			20 576		126 090
			£2 388 011		£2 551 577
Expenditure					
Grants allocated		840 082		924 493	
Less grants lapsed		43 681	796 401	36 288	888 205
Jubilee Project			—		600 000
London Programme			300 000		—
King's Fund Centre		692 550		551 421	
Less contribution from DHSS	247 000				
Less contribution from Thames RHAs	65 625	312 625	379 925	253 300	298 121
King's Fund College		567 261		493 820	
Less course fees received		170 649	396 612	154 149	339 671
Publications		30 460		37 587	
Less sales		18 244	12 216	12 841	24 746
Administration					
Salaries and Wages		231 582		196 562	
Additional Superannuation Contributions		50 145		—	
Establishment		39 571	321 298	33 398	229 960
Other Expenses					
Maintenance of Fund premises		37 922		43 964	
Pensions — Supplementary payments		86 126		101 518	
Professional fees		55 489		23 212	
Visiting expenses		2 022	181 559	2 180	170 874
			£2 388 011		£2 551 577

CONTRIBUTORS IN 1980

Her Majesty The Queen
Her Majesty Queen Elizabeth The Queen Mother
Gloucester Charitable Trust

Anonymous ('EME')
Hon Hugh Astor JP

Barclays Bank Ltd
Baring Foundation Ltd

Worshipful Company of Carpenters
Coutts & Co

Miss V Dodson

Miss W Edwards
Equity & Law Charitable Trust

Lord Hayter KCVO CBE
Miss E V Howells

Mrs G Inchbald
Inner London Education Authority (Course FE 12)

Jensen & Son

R G Lane
Lloyds Bank Ltd

Marks & Spencer Ltd
Metropolitan Bonded Warehouses Ltd
Midland Bank Ltd
Morgan Grenfell & Co Ltd

National Westminster Bank Ltd

Major R O'Brien MVO TD

P F Charitable Trust
Prudential Assurance Co Ltd

Albert Reckitt Charitable Trust
T B Robson

St Anthony Medical Center, Indiana
O N Senior
Mrs R M Simon

Williams & Glyn's Bank Ltd
Judge R B Willis TD

LEGACIES RECEIVED IN 1980 (£5008)

F R Duerden
Rev R Fawkes
V V Lamberger Will Trust
C Louch
G E Pearson
E Robertson
Sir Edward Stern Will Trust

GRANTS MADE IN 1980

£

LONDON PROGRAMME

1980 allocation 300 000

**TO NATIONAL HEALTH SERVICE
AND LOCAL AUTHORITIES****Barnet AHA**BARNET GENERAL HOSPITAL
towards extension to postgraduate
medical centre 15 000**EDGWARE HOSPITAL**towards tiered seating for lecture theatre
in postgraduate medical centre 6 500
towards extension to staff recreational centre 11 500**Bethlem Royal and Maudsley
Hospitals BoG**fellowship in pastoral care of the mentally ill
(second instalment on three-year grant) 8 000**Bromley AHA**ORPINGTON HOSPITAL
towards a training and social centre 20 000**Camden and Islington AHA(T)**ROYAL FREE HOSPITAL
brochure for visitors 500**WHITTINGTON HOSPITAL:
ST MARY'S WING**

improvement to nurses' home 150 000

City and East London AHA(T)ROYAL HOSPITAL OF ST BARTHOLOMEW
furniture for metabolic unit 4 156**TOWER HAMLETS HEALTH DISTRICT**

towards stocks of personal clothing for patients 5 000

Croydon AHAST LAWRENCE'S HOSPITAL
towards hydrotherapy pool 5 000**Ealing, Hammersmith and
Hounslow AHA(T)**EALING HOSPITAL LEAGUE OF FRIENDS
towards ultra-sound equipment 10 000

£

HAMMERSMITH HOSPITALproject to facilitate change in geriatric
hospital care 6 893**TEDDINGTON MEMORIAL HOSPITAL
LEAGUE OF FRIENDS**

towards new sanitary annexe to a ward 10 000

WEST MIDDLESEX UNIVERSITY HOSPITALtowards new building for staff sports and
social club 25 000**Essex AHA**ST MARGARET'S HOSPITAL
towards a day room for men's geriatric ward 10 000**Greenwich and Bexley AHA**QUEEN MARY'S HOSPITAL
towards video camera for postgraduate
medical centre 200**Hertfordshire AHA**CELL BARNES HOSPITAL
towards extension to patients' recreation
centre 7 000**Hillingdon AHA**towards setting up Hillingdon Hospital and
Brunel University Postgraduate and
Research Centre 50 000**Kensington and Chelsea and
Westminster AHA(T)**NORTH WEST HEALTH DISTRICT
(TEACHING)

survey of district planning teams 1 400

ST STEPHEN'S HOSPITAL

towards hydrotherapy pool 10 000

**Lambeth, Southwark and
Lewisham AHA(T)**FAMILY PLANNING UNIT
production of video tapes for training 300**GUY'S HOSPITAL**study of application of computer-indexing to
operation of an NHS pharmacy-based
regional drug information centre (second
instalment on two-year grant) 8 500

	£
London Borough of Lambeth	
towards fitting automatic doors to dining room in Netley Waterside House	5 500
Merton, Sutton and Wandsworth AHA(T)	
ST JOHN'S HOSPITAL	
towards lockers for long-stay patients	9 100
SPRINGFIELD HOSPITAL	
towards setting up legal advice and representation service for patients and staff	17 628
Northamptonshire AHA	
to make video tape for patients coming into hospital	3 304
North East Thames Regional Transfusion Centre	
towards new furniture	540
North Islington Welfare Centre	
appointment of organiser for Manor Gardens Stroke Club (first instalment on three-year grant)	3 500
Nottinghamshire AHA(T)	
expenses of staff attending seminar on long-term care in Holland	500
Royal Hospital of St Bartholomew Special Trustees	
project to develop and evaluate appliances for handicapped and disabled people (additional grant)	1 783
Royal National Orthopaedic Hospital BoG	
towards rehabilitation facilities for spinal injuries unit in Stanmore Branch	10 000
Royal National Ear, Nose and Throat Hospital BoG	
towards setting up a mother's dormitory in Golden Square Branch	3 500
St George's Hospital BoG	
bursaries for theological students	500
St Mary's Hospital Endowment Fund	
lectures on sickness and society	350

	£
St Thomas' Community Health Council	
study of peer-teaching in health education of children	1 800
St Thomas' Hospital Special Trustees	
development of user-related financial information system	10 000
Surrey AHA	
BOTLEYS PARK HOSPITAL LEAGUE OF FRIENDS	
towards extension to patients' community centre	10 000
WEST PARK HOSPITAL	
towards minibus for patients	4 200
	<hr/> £447 154

TO INDEPENDENT HOSPITALS AND HOMES

Cadlington House, Horndean	
new floor covering for nursery	429
Catharine House, St Leonard's-on-Sea	
new carpeting	1 500
Catisfield House, Hove	
towards fire precautions	3 300
Crabhill House, Redhill	
towards new kitchen	10 000
Denville Hall, Northwood	
towards renovating lifts	3 000
Dominican Convalescent Home, Kelvedon	
towards converting firing from oil to gas	4 152
House of St Barnabas in Soho, London W1	
kitchen equipment	750
Jewish Home and Hospital at Tottenham, London N15	
towards renovating central heating system	5 000

	£
King Edward VII's Hospital for Officers towards new operating table	2 750
Lingfield Hospital School, Lingfield towards remedial centre	10 000
The Marillac, Brentwood towards fire precautions	1 800
Moor House School, Oxted chip fryer	575
Phoenix House, London SE23 towards improvements to lavatories	247
Pield Heath House Special School resurfacing net-ball court	3 305
Royal Hospital and Home for Incurables, London SW15 towards therapy kitchen for patients	10 000
Royal School for the Blind, Leatherhead towards new medical suite	5 000
St David's Home for Disabled Soldiers, Sailors and Airmen, London W5 dividing units and curtains for large ward	3 275
St Francis Home, Braintree laundry equipment	8 000
St Joseph's Nursing Home, London N9 towards improvements to laundry	6 000
Southern Convalescent Homes (Inc) towards improvements to staff accommodation at Bell Memorial Home	3 000
Suffolk House, Uxbridge towards additional fire precautions	3 000
Yarburgh Children's Home, East Grinstead playground equipment	750
Expenses of annual conference and visits for staff of metropolitan hospitals to voluntary hospitals and homes	1 133
	£86 966

	£
TO ORGANISATIONS, EDUCATIONAL CENTRES AND INDIVIDUALS	
Association of Chief Chiropody Officers to develop national standard of keeping records (first instalment on two-year grant)	10 000
Association of Independent Hospitals and Kindred Organisations study of accounting systems used by member-associations (additional grant)	250
Dr Barnado's towards works at New Mossford Special School	3 000
Bermondsey and Brook Lane Medical Mission towards renovation at Foxholm, Bognor Regis	5 000
Bristol Polytechnic faculty of education to study ways of motivating long-stay patients to take an interest in visual arts (final instalment on three-year grant)	2 311
British Institute of Industrial Therapy towards reorganisation and expansion (first instalment on three-year grant)	3 500
British Library of Tape Recordings for Hospital Patients towards new recording equipment	10 000
British Red Cross Society extra costs of ambulance for London Branch	2 968
City of Westminster Society for Mentally Handicapped Children towards works at Francis House	4 700
Child Accident Prevention Committee towards continuing work of the Medical Commission on Accident Prevention (first instalment on two-year grant)	6 225
Community and Mental Handicap Educational and Research Association to set up training team (first instalment on two-year grant)	12 500

Mrs Bernadette Fallon	£
research for book on sex and disabled people	600
Hampstead Old People's Housing Trust Ltd	
towards new laundry machines	3 500
Harington Scheme	
towards horticultural training centre for mentally handicapped people	5 000
Institute of Hospital Engineering	
competition for ideas on saving energy	100
In Touch	
towards newsletter	300
Jewish Blind Society	
towards improvements to lighting at Stamford Hill Day Centre	1 000
John Grooms Association for the Disabled	
towards furnishing bedrooms in Geoffrey Parker House	4 000
League of Remembrance	
towards running costs	500
Liberation Films	
for old people to make films	600
Licensed Victuallers National Homes	
towards physiotherapy equipment in nursing home	1 200
London Medical Group	
towards running costs	10 000
Mental After-care Association	
improvements to bathroom and laundry at Royal Oak House	5 000
MIND in Ealing	
towards equipment for day club	570
National Association for the Welfare of Children in Hospital	
towards research programme	6 000

National Children's Centre	£
project to produce training guides on Asian names	5 000
Mrs Judith Oliver	
study of problems of spouses caring for severely disabled people	500
Open University	
ten bursaries for health service staff to take courses on handicapped people in the community	1 000
Oxford Centre for Management Studies	
corporate membership subscription	1 000
Perseverance Trust	
towards improvements to sick bay at Howard House	3 000
Psychiatric Rehabilitation Association	
towards buying a van	3 500
Public Health Advisory Service	
feasibility study for a neighbourhood health audit project	6 400
Royal Association for Disability and Rehabilitation	
towards distribution of film	1 000
Royal College of General Practitioners	
publication of paper on patients' participation in general practice	400
Royal College of Physicians of London	
towards expenses of medical services study group	3 100
Royal Society of Arts	
design bursaries competition (hospital equipment section)	1 000
September Group	
towards expenses	300
Sheffield Polytechnic	
to develop media-retrieval system for nurse-teachers	5 000

	£
Single Homeless Project towards setting up hostel for disabled single people leaving hospital (first instalment on three-year grant)	4 000
Society for Young Disabled on Holiday towards cost of ambulance	2 000
Southern and Western Regional Association for the Blind towards producing directory on visual handicap services	350
Spinal Injuries Association towards setting up new headquarters (second instalment on three-year grant)	1 991
Dr Peter Stott study of social worker attachment to general practice	100
University of Bath department of social administration study of employment of women doctors in the NHS (additional grant)	740
University of Bristol school for advanced urban studies seminars for members of London health authorities	4 400
University of Exeter postgraduate medical institute to evaluate experimental programme of continuing education for remedial therapists (second instalment on two-year grant)	3 000
University of London Bedford College collection and analysis of information on race and health care	400
Institute of Psychiatry study of use made of hospital ward by former patients (increased instalment on two-year grant)	2 552

	£
Middlesex Hospital Medical School to develop audit on outpatients' department (first instalment on two-year grant) to produce video tapes for postgraduate medical education	7 958 300
St Bartholomew's Hospital Medical School study of late effects of having a stoma	5 000
Thomas Coram Research Institute study of short-term residential care of mentally handicapped children	9 947
University of Nottingham department of community health towards new edition of gazetteer of innovations in medical records	2 200
University of Sheffield department of linguistics development of a written language to describe deviant speech for use in treatment of speech disorders (first instalment on three-year grant)	800
University of Southampton department of sociology and social administration study of social workers in multidisciplinary teams	200
Dr D C Wallbridge towards cost of film on emergency admission of psychiatric patients to hospital	5 000
West Ham Central Mission towards setting up hospice wing in new home	10 000
Woodford Educational Trust for Deaf Children towards buying house for further education centre	10 000
	<hr/> £200 962

IN-HOUSE GRANTS	£
Corporate management development programme (FMD)	
training programme	13 718
study grants	22 437
King's Fund travelling fellowships (RJM)	3 413
Management survey project (RJM)	20 000
Murals for hospital decoration (RJM)	
joint project with Greater London Arts Association	8 750
Overseas travel	
nurses attending management course at University of California (HOA)	3 000
director of King's Fund College to North America (TCE)	820
students sponsored by King's Fund to North America (TCE)	14 258
Residential accommodation for overseas visitors (RJM)	1 104
Training experiment for ward sisters (HOA)	12 500
Travelling bursaries for administrators (TCE)	5 000
	£105 000
Total of grants made in 1980	£1 140 082

Grants made in 1980 from 1979 reserved sum	£
Royal Hospital, Richmond	
towards building a day centre	25 000
Fallowfield, Chislehurst	
towards works in kitchen	3 000
KIDS	
towards fitting out a family support unit in Hampstead	6 250
South Lodge Housing Association	
towards fire precautions and conversion from oil to gas firing at group home in Epsom	2 000
	<hr/> £36 250 <hr/>

Note: Initials in brackets are those of the staff member who can give detailed information on the project concerned. See Staff Directory, pages 25-26, for name and address.

GENERAL COUNCIL

Governors:

HRH Princess Alexandra, The Hon Mrs Angus Ogilvy GCVO

Lord Cottesloe GBE TD

Sir Andrew H Carnwath KCVO DL

The Lord Chancellor
The Speaker of the House of Commons
The Bishop of London
His Eminence The Cardinal Archbishop of Westminster
General Secretary of the Free Church Federal Council
The Chief Rabbi
The Lord Mayor
The Chairman of the Greater London Council
The Governor of the Bank of England
The President of the Royal College of Physicians
The President of the Royal College of Surgeons
The President of the Royal College of Obstetricians and Gynaecologists
The President of the Royal College of General Practitioners
The President of the Royal College of Nursing
The President of the Institute of Health Service Administrators
The Chairman of each of the four Thames Regional Health Authorities
Professor Brian Abel-Smith MA PhD
Lord Ashburton KG KCVO JP
Hon Hugh Astor JP
Sir Roger Bannister CBE DM FRCP
Sir Mark Baring KCVO JP
John Batten MD FRCP
H C Belk MA LLB
J R G Bradfield PhD MA
Sir Robin Brook CMG OBE
Sir Andrew H Carnwath KCVO DL
Lord Catto
Lady Clitheroe
Sir Michael Colman Bt
C A Cooke OBE LLD JP
J P Ashley Cooper
Lord Cottesloe GBE TD
A M Dawson MD FRCP
R J Dent
Peter F Evans
Hugh Farmar MVO

Arthur Franks OBE
Sir George Godber GCB DM FRCP DPH FFCM
S M Gray FCA
Lady Hamilton CBE MA
Brigadier Sir Geoffrey Hardy-Roberts KCVO CB CBE DL JP
Michael Hargreave VRD
D G Harington Hawes
S C Harris OBE JP
Lord Hayter KCVO CBE
Richard L Himsworth MD MRCP
Richard Hough
G P E Howard
Lord Hunter of Newington DL LLD FRCP
G J A Jamieson
Sir Francis Avery Jones CBE MD FRCP
C E Kevill-Davies CBE DL JP
Captain A Lade OBE RN
The Countess of Limerick
Lord Luke KCVO TD DL JP
Professor Ian McColl MS FRCS
W G MacKenzie VMH
C J Malim CBE
R A Mickelwright OBE FHA
Peter Miles
Hon Mrs John Mulholland DCVO
Marquis of Normanby CBE
Major R O'Brien MVO TD
Commander R W Peers RN
Geoffrey A Phalp CBE TD
Sir John Prideaux OBE DL
Lord Rayne
Miss A B Read MBE
Lord Richardson MVO MD FRCP
Sir Graham Rowlandson MBE FCA JP
Miss M J Roxburgh OBE
Hon Peter Samuel MC TD
The Baroness Serota JP
Professor Sir George Smart BSc MD FRCP
George Somerville MD DPM
Selwyn Taylor DM MCh FRCS
Bryan Thwaites MA PhD FIMA
Lord Wardington
Sir Edgar Williams CB CBE DSO DL
Sir Hugh Wontner GBE CVO DLitt JP
Sir Henry Yellowlees KCB FRCP FFCM

MANAGEMENT COMMITTEE

Lord Hayter KCVO CBE Chairman
Hon Hugh Astor JP (Deputy Chairman)
Sir Roger Bannister CBE DM FRCP
John Batten MD FRCP
Sir Robin Brook CMG OBE
A M Dawson MD FRCP
R J Dent (Treasurer)
Sir John Donne
S M Gray FCA
Richard L Himsworth MD MRCP
Lord Hunter of Newington DL LLD FRCP
The Countess of Limerick

FINANCE COMMITTEE

R J Dent Chairman
The Governor of the Bank of England
Lord Catto
Sir Michael Colman Bt
G J A Jamieson
Lord Rayne
Lord Wardington

ESTATES COMMITTEE

R J Dent Chairman
J R G Bradfield PhD MA
J P Ashley Cooper
G J A Jamieson
Lord Rayne

PENSION FUND TRUSTEES

Miss H O Allen BA SRN SCM RNT
G J A Jamieson
Sir Francis Avery Jones CBE MD FRCP
P Norton FIA
F R Reeves OBE FCA FHA

AUXILIARY HOSPITALS COMMITTEE

Paul R Smith MA FIA Chairman
Miss Doreen Batesman AIMSW
Miss Norah Bell AIMSW
Mrs C B Bicknell
J J Bradley MB FRCP FRCPsych DPM
David N Dring
Miss Hilary Lawrence SRN SCM HVCert
A P Norman MBE MD FRCP
Lady Parks MB BS
J M Walker FRCS DTM&H
John Woolley MBE TD

EDUCATION COMMITTEE

The Countess of Limerick Chairman
A L Bussey MB BS MRCGP FFCM AMBIM
Miss W Frost OBE
Miss Christine M Hancock BSc(Econ) SRN
Graham Millard BA AHA
R M Nicholls BA DSA AHA
Professor Philip Rhodes

HOSPITAL GRANTS COMMITTEE**S M Gray FCA Chairman**

J R W Christie Brown MA MRCP MRCPsych
N F Coghill MA MB FRCP
S E T Cusdin OBE DSc AADip FRIBA
Geoffrey F Harris OBE MRCP Edin DTM&H
D J Kenny LLB
Peter S Lambert
Sir Robert Lusty
Miss Mary Richardson SRN RSCN
V M Wadsworth DSc
David Williams

KING'S FUND CENTRE COMMITTEE**Professor Ian McColl MS FRCS Chairman**

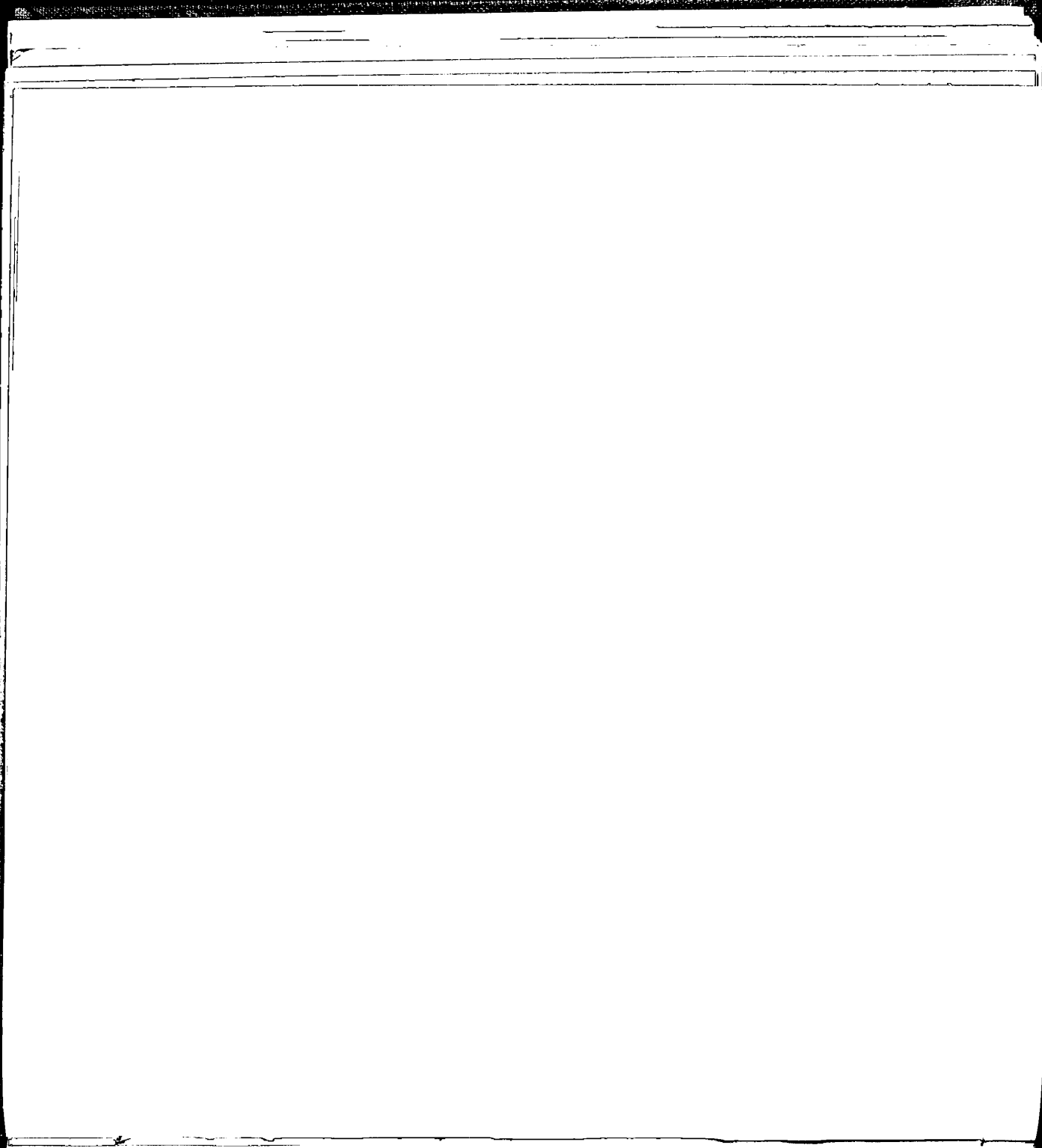
Colin Godber MRCP MRCPsych
Norman Halliday MB BS DCH
Professor J C Hayward BSc PhD SRN RMN DN RNT
M J McCarthy MSc MRCP MFCM
S F Thorpe-Tracey
P C Walker MB BChir MFCM
Miss J M Wheeler BA SRN SCM RNT

PROJECT COMMITTEE**Richard L Himsworth MD MRCP Chairman**

Professor Brian Abel-Smith MA PhD
Sir Robin Brook CMG OBE
Professor George W Brown BA PhD
A L Bussey MB BS MRCP FFCM AMBIM
Rosemary Crow MA PhD SRN SCM HV
Andrew Henderson
Brian Jarman MRCP MRCP
P M Jefferys MA MB MRCP MRCPsych
Miss Ruth Levitt
D K Nichol MA AHA
S J Steele MA MB BChir FRCOG
Rosemary Stewart PhD MSc(Econ)
Iden Wickings PhD

PUBLICATIONS PANEL**Sir Robert Lusty Chairman**

Professor G R Dunstan MA HonDD FSA
Professor W W Holland MD FRCP FFCM
Sir Francis Avery Jones CBE MD FRCP
Professor Rudolf Klein MA
Stephen Lock MA MB BChir FRCP
L H W Paine OBE MA AHA
M E Pountney



STAFF DIRECTORY

KING EDWARD'S HOSPITAL FUND FOR LONDON

14 Palace Court W2 4HT
Telephone: 01-727 0581

Secretary: R J Maxwell

Finance Officer: A B Chappell IPFA

Assistant to the Finance Officer: Mrs K Gomez

Grants Secretary (from October): W H Spray MA

Assistant Grants Secretary: Mrs E A Ralfe

Adviser on Industrial Relations: N Bosanquet BA
MSc(Econ)

Estates Adviser: Lieutenant-Colonel J D Goodship

Medical Adviser (staff health): P B Odgers MB ChB

Nursing Adviser: Miss S A G Garrett SRN RNT

KING'S FUND PUBLISHING AND PRESS OFFICE

126 Albert Street NW1 7NF
Telephone: 01-267 6111

Secretary: V Morrison

KING'S FUND CENTRE

126 Albert Street NW1 7NF

Telephone: 01-267 6111

Director: W G Cannon MA FHA

Assistant Directors:

Miss H O Allen BA SRN SCM RNT

D M Hands MPhil FHA AMBIM

K Morton BA FHA AMR

D Towell MA PhD

Administrator: F G Topping JP

Audiovisual Technician: C J Grice

Catering Officer: Miss L N Wood

Conference Secretary: Mrs M E Aston

Project Officers:

Mrs W M Arnett-Rayson SRN RFN

Miss C Davies SRN

Mrs J Rush SRN DipSoc

LIBRARY AND INFORMATION SERVICES

Librarian: Mrs J M B White BA ALA

Assistant Librarians:

Mrs M Chekri BA ALA

Mrs S C Cook BA ALA

Miss S Pallott SRN ALA

Information Officer: R G Bennett

KING'S FUND COLLEGE
2 Palace Court W2 4HS
Telephone: 01-229 9361

Director: T C Evans MSc(Econ) (from August)

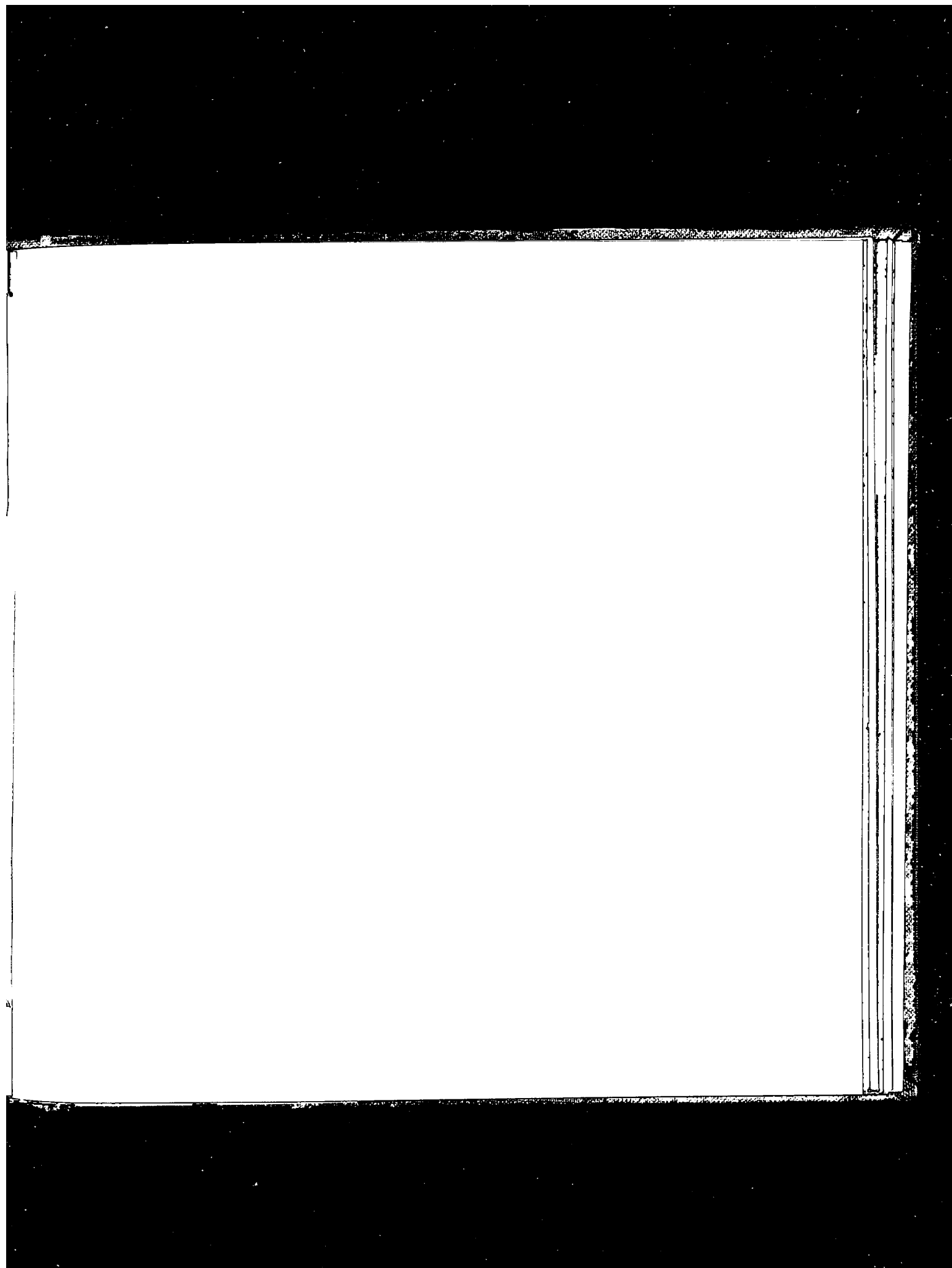
Tutors:

W E Bardgett BA FHA
N Bosanquet BA MSc(Econ)
W J Fraser MA AHA
Miss M D Hamilton BA AHA
D M Hands MPhil FHA AMBIM
S C Haywood BA DSA
D J Knowles BSc DSA AHA
D J Long BSc
J P Ranken BA LHA MIPM
Max Rendall FRCS

Bursar: A B Walker DMS
Librarian: Mrs N M Badger
Registrar: Miss B Steele
Research Associate: Mrs L Wainwright AMR
Training Assistant: Miss C E Shaw BA

**Corporate Management Development
Programme**

Associate Director: Miss F M Dixon BA MPhil
Project Coordinator: Miss A de Metz BSc(Econ)



©King Edward's Hospital Fund for London 1981
Printed in England by Vitesse Printing Limited

