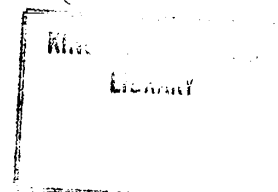


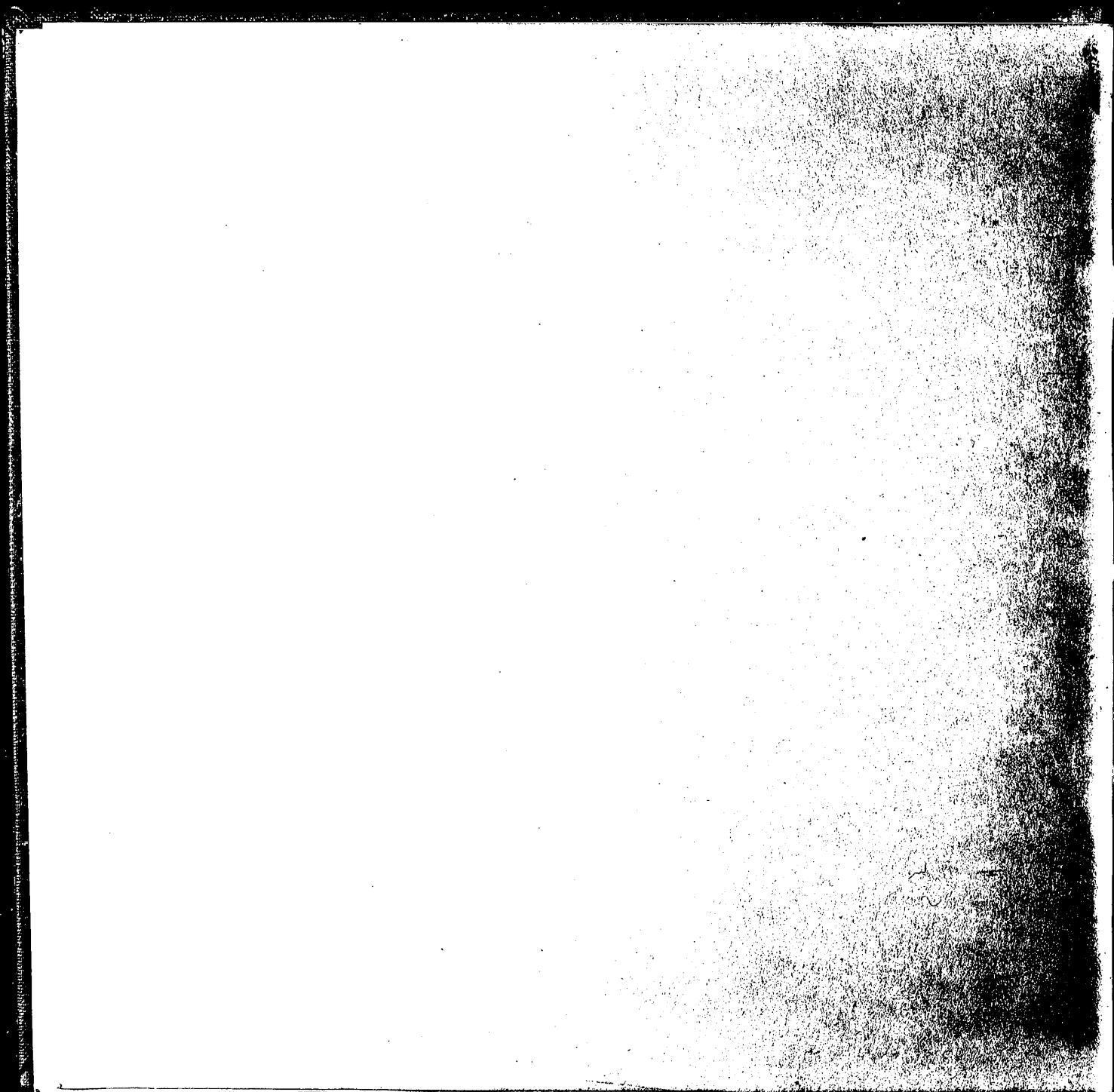
U.S.
NATIONAL
ARCHIVES

11
12

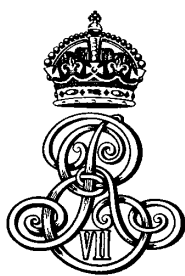
82

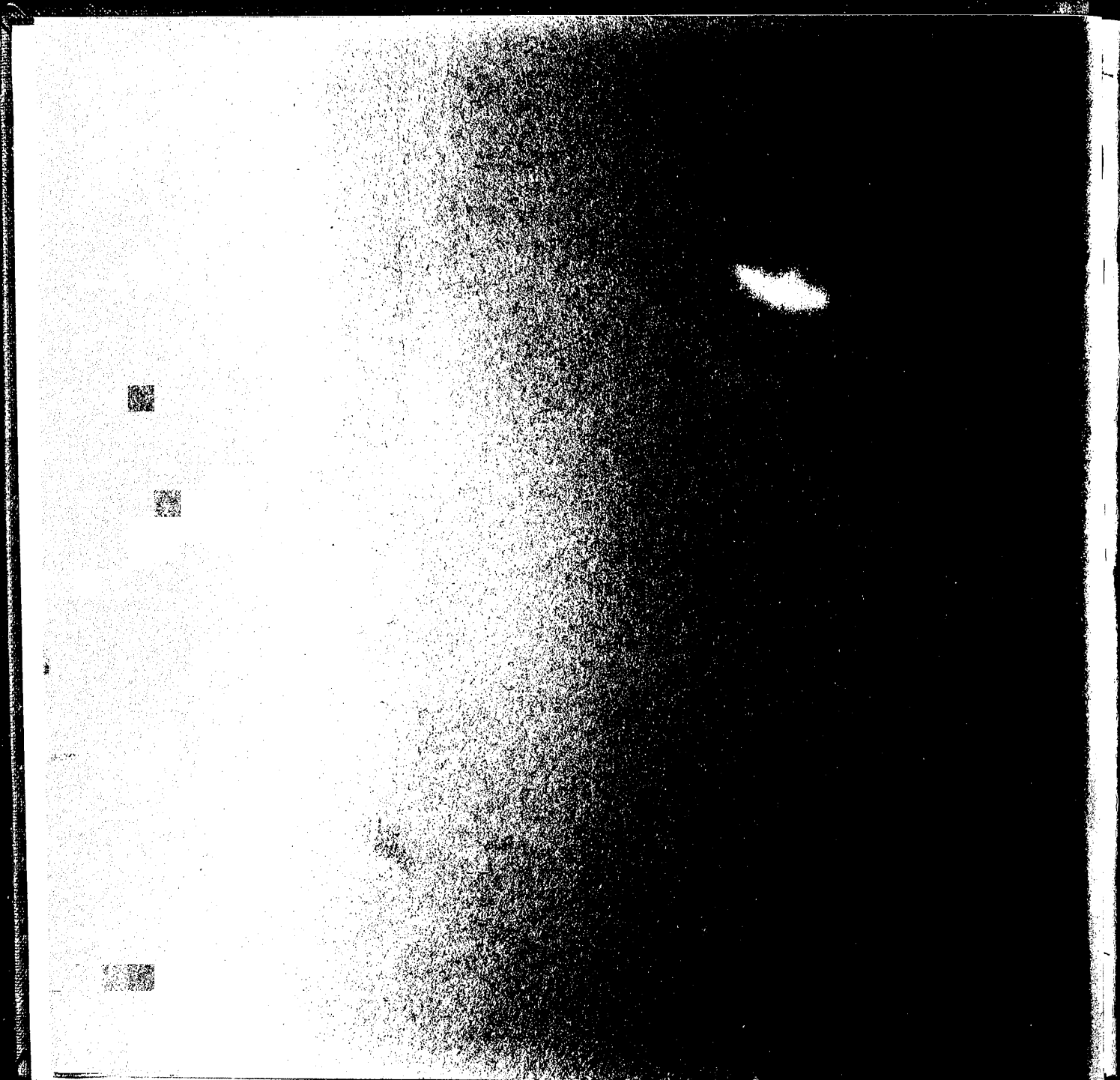






King Edward's Hospital Fund
for London
Annual Report 1977





**KING EDWARD'S HOSPITAL FUND
FOR LONDON**

85
10/12

Patron: Her Majesty The Queen

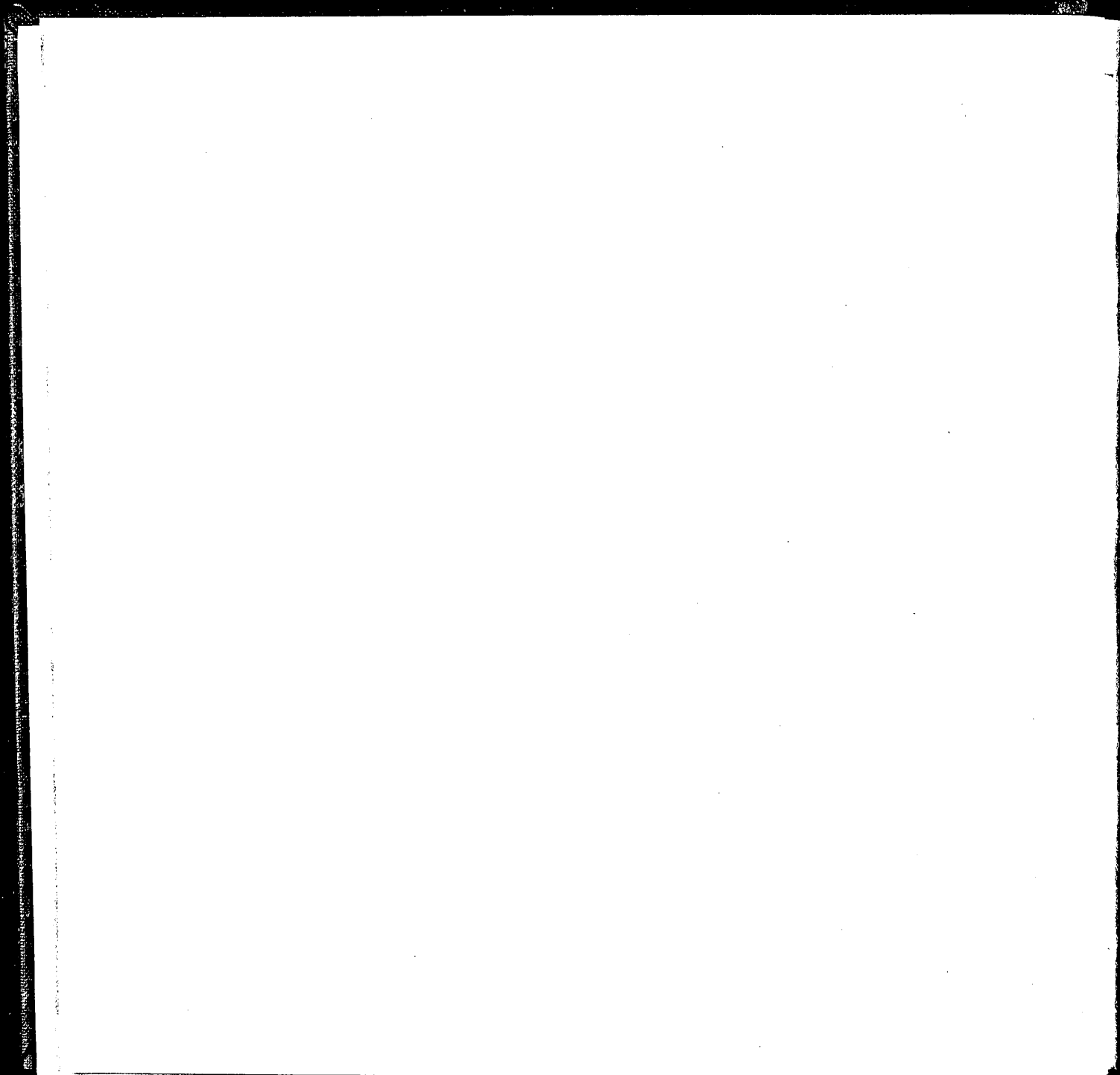
Governors: HRH Princess Alexandra,
The Hon Mrs Angus Ogilvy GCVO
Sir Andrew H Carnwath KCVO DL
Lord Cottesloe GBE TD

Treasurer: R J Dent

Chairman of the Management Committee:
Lord Hayter KCVO CBE

Secretary: G A Phalp CBE TD

14 Palace Court London W2 4HT
Telephone: 01-727 0581



CONTENTS

	page
Report 1977	5
Finance	11
Contributors	14
Grants made in 1977	
to National Health Service and local authorities	15
to independent hospitals and homes	16
to organisations and educational centres	18
in-house grants	20
General Council	21
Committees	22
Staff directory	25

REPORT 1977

Among the events of a busy year are many that demonstrate the different ways in which the King's Fund adapts traditional practice to contemporary requirements. These form the basis of the report this year.

JUBILEE PROJECT

The Fund was glad to commemorate the Silver Jubilee of Her Majesty The Queen by informing her, as Patron, of a special project. A sum of £1m has been set aside for special grants to London hospitals during the next two or three years. The grants are to be used to improve some of those wards in older general hospitals which would otherwise continue to run down, though they will be needed for many years to come. The sum will provide for eight or ten improvement schemes.

The four Thames regional health authorities have been asked to consult their area authorities to decide which hospitals are most in need and to submit proposals to the Fund. The Management Committee has appointed Visitors to be responsible for the examination of applications and for the administration of the project, in collaboration with the Hospital Grants Committee. The first two grants have been awarded: £75 000 to Hackney Hospital for improvements to a medical ward for elderly men, and £80 000 to Hither Green Hospital, also for improvements to a medical ward.

The purpose of the Jubilee project is two-fold. First, it is an attempt to show that, in a system where little new capital development can be expected for some years, it may be better to use what money there is to bring to a tolerable standard the older hospital buildings which are still structurally sound. Second, it is an attempt to lighten the burden of ward staff who could well be disheartened by the increasing struggle to maintain their standards of service in old wards, neglected through no fault of theirs or of the hospital administration.

Recent financial policies for the National Health Service have borne especially hard upon hospitals in the London metropolitan area and these are the Fund's traditional first concern. On that account, it was thought appropriate on this special occasion to change the emphasis of the practice adopted by the Fund since the introduction of the National Health Service and to make grants for a purpose which, were the money to be generally available, would certainly be a responsibility of the state.

The present Jubilee project is the fifth in the King's Fund to be linked to an important occasion in the life of a reigning monarch. The fourth of these celebrated the Silver Jubilee of King George V in 1935, when 76 grants amounting to £120 000 were made. The annual report of that year described the purpose of the grants in terms which echo the difficulties of hospitals today.

'Since the financial crisis of 1931, the hospitals, with few exceptions, have by great efforts succeeded in raising sufficient funds to maintain their beds. But they have not been able to do as much as usual to bring their buildings and equipment up to date, and numerous urgent schemes of extension and improvement have had to be deferred.'

OTHER HOSPITAL GRANTS

In addition to the Jubilee project, which is a special response to prevailing needs, about a fifth of the Fund's income set aside for grant-making still goes to NHS authorities for building, equipment and furnishing which the authorities cannot finance entirely themselves.*

The usual purpose of these grants is now more likely to be the support of an innovating scheme which will enlarge the service to patients: their rehabilitation and training, their daily life in hospital and their return

*Lists of all grants made during the year will be found on pages 15-20.

home. Such schemes may require the cooperation of voluntary organisations or of the local community health councils and, indeed, may well be initiated by them. The Fund also continues to support a variety of new approaches to the management of medical care, such as the introduction of geriatric day hospitals, and to encourage the continuing education of staff through, for example, postgraduate medical centres and others which provide mixed courses for all professional groups.

Many small hospitals and nursing homes in London and south-east England are independent of the NHS, some being financed by voluntary organisations and religious, professional or trade associations. Their service benefits patients who would otherwise become, or remain, the responsibility of the NHS authorities, often thereby occupying beds intended for acute care. These small independent charitable institutions have many difficulties in these inflationary times and the Fund continues its support of their general maintenance with direct grants.

OPENING UP DISCUSSION

The practical help which alleviates the specific immediate problem is only one part of the Fund's work. The rest, no less aimed at the promotion of good practice, is speculative and experimental. It is perhaps this form of work which marks the special role of an independent permanent foundation today.

The Fund can bring together for discussion people who might otherwise find it difficult to meet. It can open up discussion, provide information and exchange ideas; promote examination of subjects which it considers important but which, for a variety of reasons, other agencies and the statutory authorities may be hesitant to undertake. Though deeply concerned in such activity, the Fund takes care not to meddle, not to take sides in controversial political issues, and not to become some sort of reforming pressure group. To do so would

damage its independence and, thereby, reduce or even nullify its influence as an impartial, innovating organisation.

To carry out this special role, the Fund employs a number of interlocking methods: supporting projects, setting up working parties, publishing reports and, perhaps most of all, the work of its two institutions, King's Fund College and King's Fund Centre. Some examples of current activity may show how this interlocking works.

EDUCATION FOR SENIOR MANAGEMENT

In November, the Fund published a report entitled, *The Education and Training of Senior Managers in the National Health Service*. It had been prepared, at the invitation of the Fund, by a working party of distinguished representatives of higher education, health professions and organisations. The foreword states 'In setting up the working party, the King's Fund held the belief that a sufficient period had elapsed since the reorganisation of the NHS to ensure the relevance and effectiveness of a study of the education and training needs of those responsible directly to the health authorities for the working of the new service.' The working party studied three important questions. 'First, there is the role of the separate professions, each with its own high level of professional qualification, which must adjust to new responsibility for corporate advice and decision. Second is the need for a policy for the use of universities and other institutions of higher education as the source of conceptual development and research. And third, the evidence is reviewed and the case argued with conviction for the establishment of a system of continuing education and preparation for change.'

The report is, as its subtitle suggests, *a contribution to debate*, on a complex and contentious subject. The Fund, as *The Lancet* put it in a review of the report, 'can propose solutions to Health Service problems

without being held accountable, as the Department of Health would be, if their proposals go awry. The Fund is therefore in a position to lead thought . . . ' However, the Fund is accountable to its own aims and purposes. Publication of a working party report is not the end of the matter. The King's Fund College has followed up the recommendations with the preparation of plans for developing special courses on corporate senior management as part of its future programme. Meanwhile, a series of seminars is being jointly planned by the College and Centre for continuing study of the report's recommendations.

MEDICAL RECORDS AND MEDICAL CARE

The Fund does not finance medical research of a clinical nature but it has always concerned itself with the organisation and management of medical practice in hospitals and, latterly, in the integration of hospital and community services.

The medical records project is an example of a major initiative which requires substantial support from an independent source. The project began in 1974 as a group of experimental studies in Guy's Hospital and the Royal Free Hospital in the use of the problem-oriented medical system in hospital practice and in the education of medical students. It included a national survey of record systems in use by the department of community health, University of Nottingham, a report of which was produced as a King's Fund Project Paper,* and an examination of the role of medical records officers by the Association of Medical Records Officers.

By 1977 the two major hospital experiments had reached a stage at which an evaluation could be attempted. Ways are being sought for the continuation of the work by other sources of financial support and

**Innovations in Medical Records in the United Kingdom*, King's Fund Project Paper 16, available from the King's Fund Centre.

for the gradual general introduction of the system in routine hospital practice and medical education. The Fund's interest is now turning to studies of record-keeping systems used by general practitioners. The findings of groups already engaged in studies of this nature and the experiences of those taking part are being discussed in conferences at the Centre.

The Fund is also supporting a medical services study group set up by the Royal College of Physicians, under the direction of Sir Cyril Clarke, to examine various aspects of the quality of medical care and the problems of assessing it in terms of outcome. Offices for the group have been provided at the Centre.

COURSES, SEMINARS AND CONFERENCES

The College, while continuing its established courses and seminars with some changes in emphasis and format, has included further experimentation in its programme. The newer types of courses deal with subjects which people in health service management consider to be the main problems on which they need help; for example, industrial relations and the effects of recent legislation, the development of the role of clinical representatives of district and area management teams, and of geriatricians and psychiatrists in the management of their specialist services.

An experimental course for a mixed group of students was organised jointly by the College and St Thomas' Health District. Membership included students of medicine, nursing, physiotherapy, radiography and administration. The object was to help develop, early in their professional lives, an understanding of each other's work and of the organisation and aspirations of the NHS. A series of meetings at the Centre has a similar theme: representatives of patients' associations and professional staff in the health and social services are discussing ways of improving their communication.

A new series of seminars and conferences, with the

general title 'Value for Money', has so far studied hospital catering, ward costs, and making better use of hospital buildings.

Projects to provide fresh material for courses, seminars and meetings are also designed with a view to their use in the health services. A project to develop and teach the use of decision-analysis has included the development of case material on such questions as the closure of small hospitals, and the establishment of special units such as those for coronary care. Most projects involve collaboration with other educational bodies and with health authorities. One on financial management, for example, is being developed with Oxford Regional Health Authority and the Oxford Centre for Management Studies. Another, to develop improved means of teaching a team approach to planning, has involved the health authorities and universities of Leeds and Nottingham, and is being used in conferences and courses on planning which form part of the programmes of the King's Fund Centre and the College. These are concentrating on planning in health districts, in line with the Fund's belief in the importance of supporting activities which will have the most direct effect upon improving the care of patients.

NEWSLETTER

Only a comparatively small amount of the work of the two institutions is described in this report. Full information on their current and future activities is published in the restyled quarterly *KF News*. Two particularly noteworthy features of the work of the Centre have been the big response to any meetings about community services and the interest of community health councils in the Centre's activities.

More use is being made of the College and the Centre as neutral independent places where groups of people concerned with health care and health services can meet to discuss their own affairs. It is thought that while this may be an indication of the low morale in the

NHS, it may also be part of a general self-motivated attempt to raise it. The Fund welcomes the use of its institutions for these purposes.

OVERSEAS CONTACTS

A brighter note for the future is undoubtedly the high quality of candidates who each year present themselves for acceptance to the College's 'outward bound' course which visits the United States or Canada. The members of the course – about 12 in all – are administrators, doctors and nurses in their late twenties or early thirties. Year after year, the intelligence and enthusiasm of each new group seem to impress the hosts in North America as much as the Fund's selecting committee.

It is encouraging to reflect that these are some of the young men and women who will carry the responsibility for management of one kind or another in the British health services of the future.

The Fund's travelling fellowship scheme, which has enabled doctors to undertake short periods of post-graduate study in Australia or New Zealand, is to continue for another three years. Since the scheme began in 1970, 12 bursaries have been awarded. In 1977, the chairman of the sub-committee which deals with the scheme visited the two countries to see at first hand the centres providing the best opportunities and to discuss future plans.

A new experimental scheme will provide bursaries for a small number of administrators, including medical and nursing administrators, in the Thames and Wessex regions to enable them to seek further experience abroad.

The College organised a second seminar for senior administrators from Australia, Canada, New Zealand, USA and UK, and the Fund is publishing a report of

the meeting entitled *The Health Service Administrator: Innovator or Catalyst?*

The Centre continues to collaborate with the International Hospital Federation in arranging the annual overseas conference for administrators from the developing countries.

Both the College and the Centre receive visitors from overseas, individuals and groups, and have long-established links with many organisations and educational centres. One product of this international exchange is a register of research projects sponsored by European hospital centres and similar bodies which has been compiled by the Centre's library staff. The register will be kept up to date to provide a guide to innovations in health care management in Europe, and will be a valuable addition to the Centre's library and information service.

The ways in which Britain is tackling the problems of providing health care continue to attract interest. Other countries have similar difficulties of financial restraint and political intervention, and of responding to medical advances and public expectation. Visitors from overseas provide a fresh insight into such problems and the effect they have upon organisation, management and professional training. A problem shared is a burden lightened.

CHANGES IN ORGANISATION

The corollary of beginning new work is the continuous review of established activity. The projects and services initiated by the Fund reach a stage at which thought must be given to their future. Those which have outlived their purpose – and these seem to be very few – are brought to a close. Most projects and services seem to continue to be needed well after the experimental stage which the Fund has supported. These are sometimes taken into other activity of the Fund or into that of the health services. Not infrequently,

projects begun with support by the Fund develop an independent life of their own.

The Fund's continuous review of its activity and the resulting changes in its organisation ensure the relevance of the work of an independent permanent foundation to the needs of the present and likely future. Changes are brought in with due consideration for the staff who invest personal effort in developing a new service or project. Wherever possible adjustment is made when older staff members are reaching retirement and when younger members are ready to develop their careers in the Fund or elsewhere.

During the year, four such changes were made.

Emergency Bed Service

Responsibility for the management of the Emergency Bed Service has been transferred to the South East Thames Regional Health Authority. The EBS was set up by the Fund in 1938 to help general practitioners in London get their patients admitted quickly to hospital. The Fund has retained responsibility for its management since then, though for many years the service has been financed chiefly by the hospital and health authorities.

The EBS is, however, an essential part of the provision of health care in London. The transfer of its management completes the gradual handover which is the natural consequence of its work. The service to GPs is not affected in any way. The South East Thames RHA now acts in overall supervision as agent for the other three Thames authorities. It has also been accepted that the operational independence of an emergency service needs to be upheld and a policy group has been formed to ensure this through representation of all interested parties in cooperation with the RHA.

The day-to-day management is to remain local, near to the present EBS offices at London Bridge, and has

been delegated to Guy's Health District management team. This arrangement will also give the EBS staff better opportunities for personal advancement than could be offered by the more limited staffing structure of the Fund.

Equipment Advisory Service

The routine work of the equipment advisory service has been absorbed by the general information services of the Centre. The service was one of four set up by the Fund in the late 1950s. The others similarly provided information and undertook studies in hospital catering and dietetics, and in nursing recruitment. Much of the work which they initiated is now undertaken by the health authorities or by other organisations as part of their routine service.

The Fund, however, maintains interest in the purpose for which an advisory service or a project was set up. Experimental studies on appliances for disabled people, for instance, are currently being supported, and the Centre is organising discussions on equipment and supplies in the health services with a view to setting up further studies.

Mental Handicap Project

The project to improve services for mentally handicapped people began in the early 1970s. Some of its activities, including conferences, have now been absorbed in the work of the Centre's long-term care team whose interest also covers the care of children and elderly people, and the assessment of priorities. Others are being continued and developed by the Institute of Mental Subnormality, which has received a substantial grant for this purpose.

Nursing Sub-committee

The sub-committee was set up as a temporary measure by the Management Committee to advise on the ways in which the Fund might support the needs of nurses in the future. Among the proposals adopted were ex-

periments in multidisciplinary teaching of students of the various health professions; joint conferences for tutors of hospital nursing, health visiting and social work; studies to improve relationships between nurses and patients; a project to help newly-trained nurses prepare for their administrative role in the wards; support for post-registration training, including a research bursary for a nurse to undertake a course of study at university. These proposals have now been implemented. The sub-committee has completed its work and future activities pertaining to nurses will become part of the continuing work of the standard committees of the Fund.

These changes in the Fund's organisation are the inevitable consequence of the close relationship which the Fund has developed with the health services. They must be seen alongside the other aspects of the Fund's role as an independent foundation, which is to promote interest in new, constructive ideas and to support experiments for the improvement of the system generally. In some measure the one grows out of the other, and it is therefore necessary that the Fund, in its daily activity, should seek to maintain this continuing relationship with all those responsible for running the health services. It is hoped that this report has demonstrated the Fund's capacity to fulfil these requirements.

FINANCE

The following pages (12 and 13) contain abridged financial statements extracted from the full accounts of the King's Fund, which are available on request. The statements show that, at 31 December 1977, the total market value of the Fund's assets was £28 272 000 (1976 £24 226 000) and the income for the year £1 601 000 (1976 £1 353 000).

The increase of almost £250 000 of income in 1977 is due mainly to the higher level of return from property investments. With regard to outgoings, after the first full year in operation, the King's Fund Centre has now become the largest single item of expenditure and, despite the many economies that have been made, the Fund's overall costs continue to rise due to the effects of inflation.

As mentioned earlier in the Annual Report, it has been decided that the Fund should engage in a special project to commemorate the Silver Jubilee of Her Majesty The Queen. The amount of £1 000 000 will be expended during some three years to provide for the improvement of ten hospital ward units in the London area. The first allocation of £225 000 towards the total figure is shown as a separate item in the accounts.

The Treasurer gratefully acknowledges all contributions that have been made to the Fund during the past year. Once again he would like to draw attention to its suitability as an object for charitable legacies: he will welcome any additional sources of money that will enable the Fund to give further support to the advancement of hospital practices and health care.

Bankers :	Bank of England Baring Brothers and Co Limited Midland Bank Limited
Solicitors :	Turner Peacock
Auditors :	Deloitte Haskins and Sells

KING EDWARD'S HOSPITAL FUND FOR LONDON

ABRIDGED STATEMENT OF ASSETS AND LIABILITIES AT 31 DECEMBER 1977

	Book Value 31 December		Valuation 31 December	
	1977	1976	1977	1976
	£	£	£	£
Capital Fund				
Investments				
Quoted securities	4 632 052	4 524 690	7 431 517	6 045 337
Unquoted securities	83 097	84 027	89 199	70 520
	<u>4 715 149</u>	<u>4 608 717</u>	<u>7 520 716</u>	<u>6 115 857</u>
Current assets	162 058	152 609	162 058	152 609
	<u>4 877 207</u>	<u>4 761 326</u>	<u>7 682 774</u>	<u>6 268 466</u>
General Fund				
Investments				
Quoted securities	5 544 508	5 418 706	8 147 670	6 984 728
Unquoted securities	22 749	22 749	28 050	22 522
Properties, including Fund premises	8 640 495	8 722 220	13 236 470	12 004 330
Reversionary interests— nominal value	1	1	—	—
	<u>14 207 753</u>	<u>14 163 676</u>	<u>21 412 190</u>	<u>19 011 580</u>
Net current liabilities	(893 714)	(1 108 809)	(893 714)	(1 108 809)
	<u>13 314 039</u>	<u>13 054 867</u>	<u>20 518 476</u>	<u>17 902 771</u>
Special Funds				
Investments				
Quoted securities	52 716	52 716	56 231	41 009
Current assets	14 213	13 793	14 213	13 793
	<u>66 929</u>	<u>66 509</u>	<u>70 444</u>	<u>54 802</u>
Total Net Assets	<u>£18 258 175</u>	<u>£17 882 702</u>	<u>£28 271 694</u>	<u>£24 226 039</u>

ABRIDGED INCOME AND EXPENDITURE ACCOUNT YEAR ENDED 31 DECEMBER 1977

	£	1977	£	1976	£
Income					
Securities		1 015 957		948 080	
Properties		562 564	1 578 521	395 995	1 344 075
Donations		21 414		7 772	
Legacies allocated to income		1 395	22 809	668	8 440
			1 601 330		1 352 515
Excess of Expenditure over Income for the year, transferred from General Fund			149 565		(405)
			£1 750 895		£1 352 110
Expenditure					
Grants allocated		676 616		697 962	
Less grants lapsed		36 657	639 959	24 637	673 325
Jubilee Project			225 000		—
King's Fund Centre		462 099		353 106	
Less contribution from DHSS	140 000				
from Thames RHAs	30 000	170 000	292 099	160 000	193 106
King's Fund College		376 648		361 939	
Less course fees received		113 646	263 002	129 620	232 319
Emergency Bed Service		233 735		227 586	
Less contribution from Thames RHAs		227 235	6 500	221 086	6 500
Publications		14 629		11 863	
Less sales		8 646	5 983	12 983	(1 120)
Administration					
Salaries and wages		151 885		134 335	
Pensions		69 657		42 112	
Establishment		43 569	265 111	35 125	211 572
Other Expenses					
Maintenance of Fund premises		23 252		15 776	
Professional fees		28 764		19 781	
Visiting expenses		1 225	53 241	851	36 408
			£1 750 895		£1 352 110

CONTRIBUTORS IN 1977

Her Majesty The Queen
Her Majesty Queen Elizabeth The Queen Mother
Gloucester Charitable Trust

Anonymous ('E M E')

Bank of England
Barclays Bank Ltd
Baring Foundation Ltd
Bawden Fund
Borges Trustee Co Ltd

Worshipful Company of Carpenters
A H Chester
Coutts & Co

Miss V Dodson

Miss W Edwards

Gillett Bros Discount Co Ltd
Guardian Overseas Education

Lord Hayter KCVO CBE
Miss E V Howells

Mrs G Inchbald
Innes Memorial Fund

Jensen & Son

Lloyds Bank Ltd
London & Northern Estates Co Ltd

Marks & Spencer Ltd
Metropolitan Bonded Warehouses Ltd
Midland Bank Ltd
Morgan Grenfell & Co Ltd

National Westminster Bank Ltd

Major R O'Brien MVO TD
Oppenheimer Trusts

Lady Pepler
Worshipful Company of Pewterers
P F Charitable Trust
Prudential Assurance Co Ltd

Albert Reckitt Charitable Trust
T B Robson

O N Senior
Mrs R M Simon

Williams & Glyn's Bank Ltd
Judge R B Willis TD

LEGACIES RECEIVED IN 1977

F A Capper Will Trust
R E Prodgers
Miss W F Willcocks
H H Wills

GRANTS MADE IN 1977

£

**JUBILEE PROJECT
Special Distribution****Hackney Hospital**
to improve medical ward

75 000

Hither Green Hospital
to improve medical ward
reserved sum

80 000

70 000

£225 000**TO NATIONAL HEALTH SERVICE
AND LOCAL AUTHORITIES****Barking and Havering AHA**
HAROLD WOOD HOSPITAL
towards extending staff social club

10 000

Brent and Harrow AHA
CENTRAL MIDDLESEX HOSPITAL
towards setting up geriatric day hospital

20 000

NORTHWICK PARK HOSPITAL
towards setting up staff social club

5 000

Bromley AHA
CANE HILL HOSPITAL
towards setting up beauty salon

1 500

Cambridge AHA(T)
CAMBRIDGE HEALTH DISTRICT (TEACHING)
to produce paper on computerised
manpower information system

390

City and East London AHA(T)
HACKNEY HOSPITAL
towards improvements to postgraduate
medical centre

1 500

ST ANDREW'S HOSPITAL
towards furnishing and equipment for
academic centre

7 570

Croydon AHA
ST LAWRENCE'S HOSPITAL
towards internal broadcasting system
for patients

2 000

£

**Devon County Council
social service department**to develop system in general practice for
assessing needs of elderly people and
coordinating medical and social support
(first instalment)

7 085

Doncaster AHA

management audit in nursing services

2 113

Enfield and Haringey AHA
HIGHLANDS HOSPITALpatio and canopy for unit for the
younger disabled

1 500

Essex AHA**ST MARGARET'S HOSPITAL**
towards day room for women's geriatric
assessment unit

8 000

Greenwich and Bexley AHA
BROOK GENERAL HOSPITALtowards extension of postgraduate medical
centre

11 000

Guy's Hospital Special Trustees
study of health policies

27 000

Hertfordshire AHA**HARPERBURY HOSPITAL**
towards new building for patients' training
activities

9 000

**Kensington and Chelsea and
Westminster AHA(T)**
ST MARY'S HOSPITALlectures on sickness in society by
Rev Dr Douglas Pett, resident chaplain

250

Kent AHA**JOYCE GREEN HOSPITAL**
towards hydrotherapy pool

5 000

Merton, Sutton and Wandsworth AHA(T)
HENDERSON HOSPITAL

towards recreation complex

7 000

QUEEN MARY'S HOSPITAL, ROEHAMPTON
equipment for burns unit

2 000

	£
ST GEORGE'S HOSPITAL	
experimental training scheme for hospital chaplains (second instalment)	2 000
ST JOHN'S HOSPITAL	
towards fitting out geriatric day hospital	10 000
Middlesex Hospital Special Trustees	
study of medical outpatients departments in London hospitals (final instalment)	8 478
study of needs and responses of patients to care in hospital and by community services (final instalment)	20 000
towards cost of film on 'awkward' patients	5 000
Northamptonshire AHA	
towards setting up joint information unit with Northampton County Council (final instalment)	4 000
Oxford RHA	
study of role of volunteers in community care of patients discharged from mental hospitals	685
Roehampton Community Health Council	
survey of patients' reactions to arrival and departure arrangements in hospital	500
Royal Hospital of St Bartholomew Special Trustees	
towards project to develop and evaluate appliances for handicapped people (second instalment)	12 741
Royal National Orthopaedic Hospitals Stanmore Branch	
Arjo bath system in an upgraded ward	7 500
towards building rehabilitation and assessment unit	20 000
St Thomas' Hospital Special Trustees	
development of user-related financial information system	7 000
experimental appointment to develop common policy on management and research (additional grant)	8 000

	£
Dr Anne Savage	
towards publishing <i>Part-timer</i> newsletter	300
Dr John Stevens	
study of outcome of primary care (second instalment)	3 950
Surrey AHA	
WEST PARK HOSPITAL	
towards internal broadcasting system for patients	1 000
Westminster Hospital Special Trustees	
to develop SHAPE, a creative arts programme for patients (first instalment)	5 000
	<hr/> £244 062

TO INDEPENDENT HOSPITALS AND HOMES

Banstead Place, Banstead	
extension to dining room	2 500
Bell Memorial Home, Lancing	
towards exterior redecoration and renewing woodwork	2 000
Buckmaster Memorial Home, Broadstairs	
new curtains	1 080
Chalfont Centre for Epilepsy	
towards hydrotherapy and swimming pool	4 650
Churchill Court, Sevenoaks	
repairs to lift	600
Delves House, London SW7	
towards improvements to dining room and kitchen	4 000
Dominican Convalescent Home, Kelvedon	
bathroom for nursing staff	362
Edith Priday Home, London SE3	
towards buying and fitting emergency generator	3 500

Effra House, London SW2	£	Mildmay Convalescent Home, Worthing	£
towards replacing kitchen equipment and furniture	750	towards providing laundry, and extension to dining room	3 500
Fallowfield, Chislehurst		Ranyard Memorial Nursing Home, London SE13	
renovations to kitchen	3 000	towards buying and fitting bedpan washer	1 284
Fieldview, Liss		Royal Hospital and Home for Incurables, London SW15	
towards fitting out adolescent unit	2 500	towards modernisation	10 000
Fonthill, Reigate		St David's Home for Disabled Exservicemen, London W5	
towards emergency generator	5 000	towards improvements to lavatories	2 000
Grange Farm, Chigwell		St Joseph's Hospital, London W4	
towards setting up kitchen in new holiday home for severely disabled people	10 000	towards floor coverings for wards	5 000
Hahnemann Convalescent Home, Bournemouth		St Luke's Hospital for the Clergy, London W1	
carpet for corridor	1 000	towards anaesthetic machine and defibrillator	2 000
Harrison Homes, London W11		St Michael's Convalescent Home, Clacton-on-Sea	
towards fitting out new rest home	4 000	repaving patio outside dining room	1 700
Haven's Guild, London N3		St Teresa's, Dockenfield	
towards fire precautions	5 000	towards covered way	2 000
Hertfordshire Seaside Convalescent Home, St Leonards-on-Sea		Servite House, London W5	
towards exterior redecoration	2 750	towards new ambulance	2 500
Hill Homes		Spelthorne St Mary, Thorpe	
towards improving sanitary annexes at Trees, London N6	4 300	towards converting garage into games room	1 375
Howard House, Gerrards Cross		Waterside House, Netley	
replacement of boiler and associated works	3 323	towards King's Fund type beds and accessories	500
Kolbe House, London W5		Wilkinson House, London SE15	
installing lift	7 000	towards fire precautions	2 500
Lingfield Hospital School, Lingfield		Yarburgh Children's Home, East Grinstead	
towards building swimming pool	5 000	towards interior decoration	240
London and Ascot Priory, Ascot			
medicine trolley	117		
Lourdes House, Westbrook			
towards setting-up expenses	1 000		

	£
Expenses of conference and visits by staff of London hospitals to convalescent homes	1 070
Token grants to 18 homes and 11 hospitals	5 800
	<hr/> £114 901

TO ORGANISATIONS AND EDUCATIONAL CENTRES

ASK

towards publishing leaflet for parents on services for sick and disabled children in Norfolk	250
--	-----

Association of Health Sector and Unit Administrators

towards recruitment programme	1 000
-------------------------------	-------

Association of Sterile Supply Administrators

towards reprinting training handbook	500
--------------------------------------	-----

Bermondsey Medical Mission

towards fire precautions at Foxholm, Bognor, and equipment for head office	1 120
--	-------

Bow Mission

furniture and equipment for alcoholics' recovery project	1 360
--	-------

British Postgraduate Medical Federation

towards setting up careers information centre for junior hospital doctors (final instalment on two-year grant)	26 000
--	--------

Brixton Centre

to produce publicity leaflet on art for elderly hospital patients	150
---	-----

Camphill Village Trust

towards renovations and fire precautions at Delrow House	5 500
--	-------

Central Council for the Disabled

towards work of access and egress committee (final instalment on two-year grant)	2 500
--	-------

Chartered Society of Physiotherapy

towards producing film for Riding for the Disabled	400
--	-----

City of Westminster Society for Mentally Handicapped Children

towards setting up hostel, including fire precautions	4 000
---	-------

Clinic of Psychotherapy

towards setting up London Stress Clinic	1 000
---	-------

COMBAT Huntington's Chorea

towards expenses (final instalment on two-year grant)	5 000
---	-------

Department of Mission

towards publishing guide to voluntary organisations in and around Chelmsford	250
--	-----

Elderly Invalids Fund

towards running costs (first instalment on three-year grant)	6 000
--	-------

Esher Association for the Prevention of Addiction

towards new bus for Cranstoun	1 500
-------------------------------	-------

Helping Hand Organisation

towards furnishing community centre in Shepherds Bush	2 000
---	-------

Ileostomy Association of Great Britain and Ireland

towards equipment for head office	3 500
-----------------------------------	-------

Institute for Consumer Ergonomics

towards manufacture of powered wheelchairs	1 300
--	-------

Institute of Mental Subnormality

to continue activities developed by King's Fund mental handicap project	15 000
---	--------

Institute for the Study of Drug Dependence

to develop and evaluate information retrieval system	10 625
--	--------

	£
International Hospital Federation towards setting up information service (third instalment on five-year grant)	5 000
Invalid Children's Aid Association laundry equipment for special schools	1 500
Islington Society for Mentally Handicapped Children towards extending premises	1 500
Jewish Blind Society towards fire precautions at Rokefield, Dorking	1 500
London Medical Group towards expenses (second instalment on three-year grant)	5 000
London School of Hygiene and Tropical Medicine teaching appointment for extension training in community medicine (first instalment on two-year grant)	4 500
Mental After-care Association towards installing central heating at Coignafearn	5 000
towards conversion to provide laundry at Clifton House, Bournemouth	3 300
National Association for the Welfare of Children in Hospital towards research programme	13 000
Open University for staff in Thames and Wessex RHAs to attend courses on handicapped people in the community	650
Orpington Mental Health Association towards developing voluntary activities (Anchor House Project)	350
Oxford Centre for Management Studies corporate membership fee	1 000
Paintings in Hospital (first instalment on five-year grant)	5 000

	£
Polytechnic of Central London towards experimental training courses for remedial professions	6 800
Psoriasis Association towards setting up	22 567
Queen Elizabeth's Foundation for the Disabled towards mobility training area for assessment centre for severely disabled school-leavers at Banstead Place	17 500
Re-instate new van	2 000
Royal College of General Practitioners towards setting up GP premises information service	5 000
Royal Society of Arts industrial design bursaries competition, hospital equipment section	500
Royston (Fulham) Housing Association Ltd fire precautions and rewiring at Royston, London SW15	3 000
Southwark Diocesan Catholic Handicapped Children's Fellowship bath hoist for Cabrini House, London SE23	420
Toynbee Hall towards flats for families with mentally handicapped children (final instalment on three-year grant)	8 000
University of Hull department of social administration towards analysis of computer data collected for Humberside reorganisation project	250
University of London department of extra-mural studies towards cost of conference on teaching programmes for Diploma in Nursing	300

	£
University of London Institute of Education	
study of effects of short-term residential care on young mentally handicapped children	6 771
University of Southampton	
towards experimental diploma courses in management for remedial professions	3 500
Volunteer Centre	
towards publishing report on voluntary help organisers in NHS	1 000
Young Disabled on Holiday	
camping equipment	1 000
	<hr/> £214 863

IN-HOUSE GRANTS

Allocation of student nurses (HOA)	
pilot course for nurses on techniques of allocation	500
Brunel University-King's Fund joint appointment (PJT)	1 500
Directory of patients' associations (KM)	
appointment of project assistant	2 200
King's Fund travelling fellowships (GAP)	7 500
King's Fund working party on education and training of senior managers in the NHS	
secretarial expenses	102
Medical records project (GAP)	
group of studies in use of problem- oriented medical records, current systems in use, and of role and work of medical records officers	35 950
Royal Free Hospital	
to continue studies (additional grant, £33 200)	

	£
Dr Ian Tait	
to develop and evaluate use of A4 records system in general practice (£2500)	
University of Nottingham	
expenses of doctors attending conference in Toulouse (£250)	
Overseas travel (PJT)	
for students and members of courses and seminars sponsored by King's Fund College	14 354
for NHS administrator's visit to Australia to study and report on health commissions	500
Patients' satisfaction surveys (DMH)	
survey of elderly people in hospital	1 500
Performance, priorities and policies in medical care (WGC)	
seminars	5 350
Publications Panel (EL)	
for authorising subsidised publications of other organisations	4 200
Reprint of <i>Room for Improvement</i> (DD)	662
Residential accommodation for visitors to the King's Fund (GAP)	972
Training experiment for ward sisters (HOA)	
controlled experiment in the use of wards for management training of nurses likely to become ward sisters	22 500
Travelling bursaries (PJT)	
for administrators, including nurses and doctors, in Thames and Wessex RHAs	5 000
	<hr/> £102 790
Total of grants made in 1977	£901 616

Note: Initials in brackets are those of the staff member who can give detailed information on the project concerned. See Staff Directory, pages 25-26, for name and address.

GENERAL COUNCIL

Governors:

**HRH Princess Alexandra, The Hon Mrs Angus
Ogilvy GCVO**

Sir Andrew H Carnwath KCVO DL

Lord Cottesloe GBE TD

The Lord Chancellor
The Speaker of the House of Commons
The Bishop of London
Cardinal Hume
The Reverend G A D Mann HCF
The Chief Rabbi
The Lord Mayor
The Chairman of the Greater London Council
The Governor of the Bank of England
The President of the Royal College of Physicians
The President of the Royal College of Surgeons
The President of the Royal College of Obstetricians
and Gynaecologists
The President of the Royal College of General
Practitioners
The President of the Royal College of Nursing
The President of the Institute of Health Service
Administrators
The Chairman of each of the four Thames Regional
Health Authorities
Professor Brian Abel-Smith MA PhD
G F Abercrombie VRD MD
Lord Ashburton KG KCVO JP
H C Belk MA LLB
J R G Bradfield PhD MA
Sir Robin Brook CMG OBE
Lady Brooke of Cumnor DBE
Sir Andrew H Carnwath KCVO DL
Lord Catto
Lady Clitheroe
Sir Michael Colman Bt
P H Constable OBE
C A Cooke OBE LLD JP
Lord Cottesloe GBE TD
A M Dawson MD FRCP
R J Dent
Peter F Evans
Hugh Farmer
Arthur Franks OBE
Sir George Godber GCB DM FRCP DPH FFCM
S M Gray BA FCA
Sir Maurice Hackett OBE

Lady Hamilton OBE MA
Brigadier Sir Geoffrey Hardy-Roberts KCVO CB CBE
Michael Hargreave VRD
D G Harington Hawes
S C Harris OBE JP
Lord Hayter KCVO CBE
G P E Howard
Lord Inman PC JP
G J A Jamieson
Sir Francis Avery Jones CBE MD FRCP
C E Kevill-Davies CBE JP
Captain A Lade OBE RN
The Countess of Limerick
Lord Luke KCVO TD DL JP
Professor Ian McColl MS FRCS
W G MacKenzie VMH
C J Malim CBE
Sir Rennie Maudslay KCVO MBE
R A Mickelwright OBE FHA
George Mitchell CBE JP
A H Montgomery OBE
Hon Mrs John Mulholland DCVO
Marquis of Normandy CBE
Major R O'Brien MVO TD
H M O'Connor OBE TD
Commander R W Peers RN
Sir Michael Perrin CBE
Sir John Prideaux OBE
Lord Rayne
Miss A B Read MBE
Sir John Richardson Bt MVO MD FRCP
Sir Kenneth Robson CBE MD FRCP
Lanning Roper
Sir James Paterson Ross Bt KCVO MS FRCS LLD
Sir Graham Rowlandson MBE JP FCA GLC
Miss M J Roxburgh OBE
Hon Peter Samuel MC TD
The Baroness Serota
Professor Sir George Smart BSc MD FRCP
George Somerville MD DPM
Selwyn Taylor DM MCh FRCS
Bryan Thwaites MA PhD FIMA
Professor Sir Ronald Tunbridge OBE MD FRCP JP
Lord Wardington
Major Simon Whitbread JP
Sir Edgar Williams CB CBE DSO
Sir Hugh Wontner GBE CVO DLitt JP
Sir Henry Yellowlees KCB FRCP FFCM

MANAGEMENT COMMITTEE**Lord Hayter KCVO CBE Chairman**

J R G Bradfield PhD MA

A M Dawson MD FRCP

R J Dent

S M Gray BA FCA

Sir Francis Avery Jones CBE MD FRCP

(Deputy Chairman)

The Countess of Limerick

Professor Ian McColl MS FRCS

Mrs B F R Paterson CBE JP

Professor Sir George Smart BSc MD FRCP

Selwyn Taylor DM MCh FRCS

FINANCE COMMITTEE**R J Dent Chairman**

The Governor of the Bank of England

Lord Catto

Sir Michael Colman Bt

G J A Jamieson

Lord Rayne

Lord Wardington

ESTATES COMMITTEE**R J Dent Chairman**

J R G Bradfield PhD MA

C A Cooke OBE LLD JP

G J A Jamieson

Lord Rayne

AUXILIARY HOSPITALS COMMITTEE**Richard Hough Chairman**

S N Abbott

J J Bradley MB FRCP FRCPsych DPM

C C Croggon

Miss K M Cunnew AIMS W

Miss D G Dedman BA AIMS W

Sir Robert Lusty

Hon Mrs John Mulholland DCVO

A P Norman MBE MD FRCP

Mrs Margaret Potter

Paul R Smith MA FIA

Gerald M A Turner MB FRCP Edin

EDUCATION COMMITTEE**Professor Sir George Smart BSc MD FRCP****Chairman**

Miss I C S Brown SRN RSCN RNT

A L Bussey MB BS MRCGP MFCM AMBIM

Miss W Frost OBE

R M Nicholls BA DSA AHA

S H A Shaw LLB FHA FCIS JP

A H Vause BA(Com) ACA ATII

HOSPITAL GRANTS COMMITTEE

S M Gray BA FCA Chairman

Mrs C B Bicknell

T W Borges

J R W Christie Brown MA MRCP MRCPsych

N F Coghill MA MB FRCP

Captain A Lade OBE RN

C J Malim CBE

A L Markham

A H Montgomery OBE

L C Phipps OBE

Miss Eileen Skellern OBE SRN RMN RNT

P E Sylvester MRCPsych MRCPsych

J T Woodlock

Garden Advisers

W G MacKenzie VMH

J Newell

Lanning Roper

Dietetic Adviser

Miss B R Stanton SRD

KING'S FUND CENTRE COMMITTEE

Professor Ian McColl MS FRCS Chairman

A J Brooking MA FHA

Raymond T Clarke OBE MA JP

Miss M A Day SRN

W G Harding FRCP FFCM DPH

M G Lillywhite

D C Ower TD MB BS DOBstRCOG

John Stevens MA MSc FRCGP

Miss Rosemary Stewart PhD MSc(Econ)

Miss J M Wheeler BA SRN SCM RNT

PUBLICATIONS PANEL

Sir Robert Lusty Chairman

Professor W W Holland MD FRCP FFCM

Sir Francis Avery Jones CBE MD FRCP

Professor Rudolf Klein MA

Stephen Lock MA MB BChir FRCP

L H W Paine MA AHA

M E Pountney

RESEARCH AND DEVELOPMENT COMMITTEE

Professor Ian McColl MS FRCS Chairman

J L T Birley FRCP DPM

Sir Robin Brook CMG OBE

Professor George W Brown BA PhD

Miss Oriole Goldsmith MA FHA

R Himsworth MD MRCP

Sir Francis Avery Jones CBE MD FRCP

Miss S R Lelean PhD SRN CMB

Miss Ruth Levitt BSc

R L Lindon MRCS LRCP FFCM DPH DCH

Robert Maxwell MA ACMA JP

Professor D C Morrell MRCP FRCGP

S J Steele MA MB BChir FRCOG

Miss Rosemary Stewart PhD MSc(Econ)

Peter Westland

STAFF DIRECTORY

KING EDWARD'S HOSPITAL FUND FOR LONDON

**14 Palace Court W2 4HT
Telephone: 01-727 0581**

Secretary: G A Phalp CBE TD
Deputy Secretary: E D Halton

Adviser on Industrial Relations: N Bosanquet
BA MSc(Econ)

Assistant to the Finance Officer: Mrs K Gomez
Estates Administrator: Lieutenant-Colonel
J D Goodship

Finance Officer: A B Chappell IPFA

Grants Secretary: E D Halton

Information Officer for European Health Services:
Irfon Roberts MA FHA

General Enquiries: Mrs P I Wynne-Ellis

KING'S FUND PUBLISHING AND PRESS OFFICE

**126 Albert Street NW1 7NF
Telephone: 01-267 6111**

Secretary: Elizabeth Lucas

KING'S FUND CENTRE

**126 Albert Street NW1 7NF
Telephone: 01-267 6111**

Director: W G Cannon MA FHA

Assistant Directors:

Miss H O Allen BA SRN SCM RNT

D J Downham MBE DMA FHA

D M Hands MPhil FHA AMBIM

K Morton BA FHA

Administrator: A F J Chidgey

Catering Officer: Miss E J R Kydd LHCIMA

Conference Secretary: Mrs M E Aston

Designer-draughtsman: D G Ewbank

Nursing Officer: Mrs H G Edwards SRN Dip Soc

Architectural Adviser

S E T Cusdin OBE DSc AADip FRIBA

LIBRARY AND INFORMATION SERVICES

Librarian: Mrs J M B White ALA

Assistant Librarian: Mrs S C Cook BA

Information Officer: R G Bennett

SPECIAL PROJECT

Long Term Care

Project Officers: Mrs A M Arnett-Rayson SRN RFN
Mrs J Rush SRN Dip Soc

KING'S FUND COLLEGE
2 Palace Court W2 4HS
Telephone : 01-229 9361

Director: P J Torrie FWSOM

Tutors:

N Bosanquet BA MSc(Econ)
W J Fraser MA
Miss S A G Garrett SRN RNT
Miss M E Goose MA AHA
Miss M D Hamilton BA AHA
D M Hands MPhil FHA AMBIM
J P Ranken BA LHA MIPM
J A Sharpley BSc(Soc) AHA
J E P Simpson MA FRCS
Mrs J Winter BA

Administrator: B S Satchell AHA MRSH
Librarian: Mrs N M Badger
Registrar: Miss B Steele

© King Edward's Hospital Fund for London 1978
Printed in England by Alabaster Passmore & Sons Limited

